

RE/MAX®

Miltowne Realty Corp.

22 Ontario St. South

878-2365



JEAN SNOWDEN
878-2365
878-3155



10% MORTGAGE.
LOVELY 3/4 ACRE LOT \$269,900.
Sounds too good to be true? Read on! Large bungalow in the desirable Kildee area. Features 5 bedrooms, 3 baths, family room with walkout to deck, upgraded kitchen with built-in appliances, giant rec. room with 2 walkouts plus 3 other utility rooms downstairs. Vendor will hold mortgage up to \$200,000 at 10% for 2 years for qualified buyer. Call Jean for full details.



THE ACCENT'S ON LEISURE AND SUMMER FUN

Your family will enjoy the heated inground pool & main floor family room/den. This comfortable home situated on a quiet court also offers spacious living/dining rooms, 3 bedrooms, 2 bathrooms, & eat-in kitchen. Call Jean today to view. Just listed at \$199,000.



CLAYTON HACKENBROOK
OFFICE 878-2365
RES. 875-0771
Associate Broker
24 Hr. Pager 878-2020
Car Phone

WHAT A BUY AT \$189,900.

Don't be foolish and miss this well maintained property. This home is located on a lg. fenced lot backing onto parkland. It features 3 bdrms., lg. kit. with walkout to a deck, finished rec. rm., and an entrance to a single garage from bsmt. Look around and compare. To view call Clayton Hackenbrook.



TOUGHER TIMES—The Real Estate Market has slowed, but rumours that it has ground to a halt are greatly exaggerated. Proper marketing by a professional who has been in real estate in Milton for 10 years with the same company, will sell your home. Experience, knowledge, stability and a company that has been first in residential sales in Milton for years* is a tough combination to beat.



IN A CLASS BY ITSELF

And with all the goodies: gorgeous oak kitchen overlooking family room with fireplace, 4th bedroom or study, heat pump, central air, air cleaner, absolutely immaculate. \$226,000. Call Jean to view.

*according to MLS statistics

PRIVATE WORLDS FOR BOTH GENERATIONS

So versatile and large enough for you and the children to get away from each other.

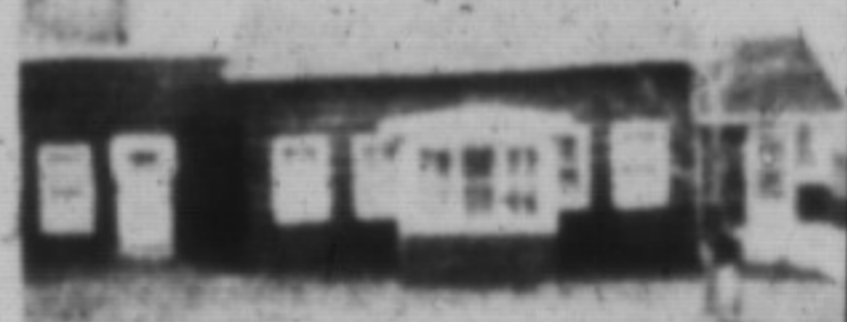
- 5 bedrooms plus study (or sixth)
- large country style kitchen
- beautiful, bright rec. room, professionally finished with fireplace
- 2 bathrooms
- oversized private lot with inground pool and change room
- elegant living and dining rooms with oak flooring
- central air and so much more.

This lovely home is in move-in condition. Call Jean to view. \$239,900



EXPRESS YOURSELF... A NEW LIFESTYLE...

In this lovely home in a sought after area. Among the many features which you would expect to find in such a home: separate formal dining room with French doors, 3+ bathrooms, fireplace in family room, central air. To view please contact please contact Jean. \$328,000



FOR PEOPLE WHO WANT SOMETHING SPECIAL

Enjoy a country feeling in this charming older home with many updated features, large family room with stove, 3 bedrooms, country kitchen, cozy living room or den, double garage, workshop. Set on pretty lot, minutes west of Milton \$189,900.

WANTED

- 4 Bdrm., 2 storey or sidesplit
- Building lots—1/2, 1 acre
- Country properties

In this market you need professional advice and guidance to sell your property. Give me a call today for all your Real Estate needs.



LINDSAY J. McLAREN
Office: 878-2365
Res: 854-2451
Pager: 878-2020
Tor. Line: 826-1030



COMFORTABLE & CONVENIENT

Kids can walk to school from the 4 bedroom two-storey in Dorset Park. Separate living room & dining room, 2 baths, single car garage, fireplace, neutral decor and walkout to deck are just the beginning.

LINDSAY J. McLAREN

Was \$497,000
Asking \$179,900



NORTH OF CAMPBELLVILLE

The 3 bedroom brick bungalow with double garage offers the charm of country living only minutes to the 401. Separate living room and dining room, rec. room, 4 piece bathroom, 3 wood stoves, new roof in 1987 and mature cedar hedge. Call for a gorgeous lot. For all the stunning details call Lindsay J. McLaren.

Was \$229,900
Now \$224,900

MILTON COMMERCIAL-INDUSTRIAL

- 1.3 acres C-3 land, downtown Milton, attractive fencing. Asking \$1.1M.
- Market Drive industrial M2 zoned, 57 acre \$259,900
- 3.34 acre C-3 land, excellent location for strip mall or commercial & office condo 1 km to 401 & Hwy 25. Asking 3.4M.
- 12,600 sq. ft. INDUSTRIAL BUILDING \$1,050,000

Call LINDSAY J. McLAREN

BRAND NEW EXECUTIVE HOME CAMPBELLVILLE

Custom design brick colonial manor in a prestigious subdivision of other luxury homes. Huge home with four bedrooms, triple car garage, 3 baths, den, library office, main floor family room all just two minutes to the 401 and 25 mins. west of the airport. Asking \$459,900. For those who want only the best call LINDSAY J. McLAREN



CAMPBELLVILLE ESTATES—BOLAND CRESCENT

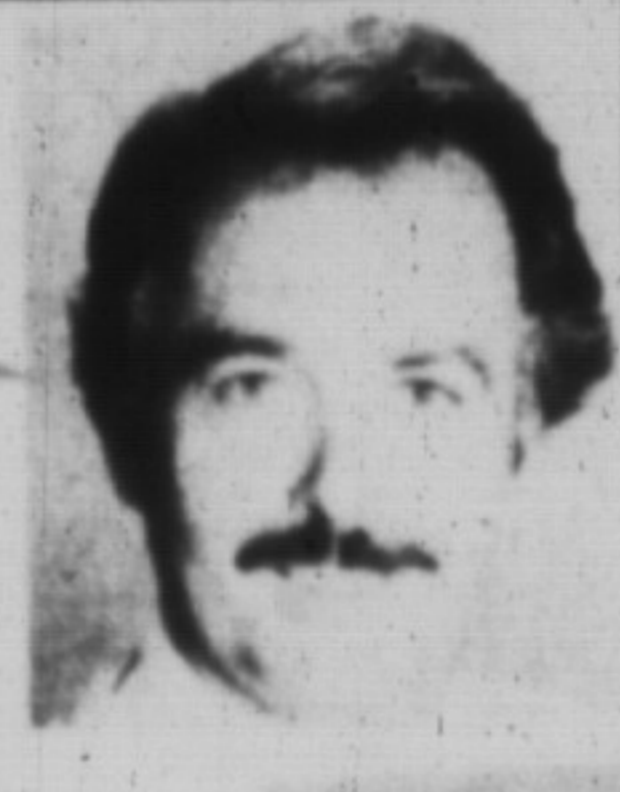
Situated just 25 mins. west of the airport and 1 mile from Hwy 401 in a very scenic, fully developed subdivision of executive homes known as Campbellville Estates, this home offers unique contemporary design on an incomparable picturesque lot. 4 bdrms, 2 baths, sunken living area with fireplace and separate dining room, den, formal front foyer with cedar doors, 3 skylights, family room has brick wall with fireplace, beamed ceiling and spotlights. Country kitchen is one of a kind featuring pine cupboards, separate eat-in area, walkout to large wrap-around deck and overlooks sunroom. Master bedroom has separate dressing area and ensuite in cedar with whirlpool. This home is in exceptional condition and must be seen to be truly appreciated. For your showing call Lindsay J. McLaren. Asking \$615,000.



HISTORICAL VICTORIA STREET

Restored 1 3/4 brick home with 4 bedrooms, 2 baths and 3 fireplaces in older Milton is one of Milton's historical homes. Featuring 4,000 sq. ft. plus an enormous formal living room with 1/2 p. large dining room, main floor family room with vaulted ceiling, brick fireplace, bar and walkout to deck. Kitchen has custom cupboards with built-in laundry area. MBR with 1/2 p. 3 other spacious bedrooms, central air conditioning and air cleaner. An excellent home for family or entertaining complete with historical charm. For more information or an appointment to view, call Lindsay J. McLaren. Asking \$479,900.

LINDSAY J. McLAREN



MAURICE MILJOUR
Office 878-2365
Res. 876-4577



SEE IT & LOVE IT!!!

Show & Sell condition is how you'll find this brick and aluminum two-storey in Dorset Park. A centre hall leads to the living room, separate dining room, main floor family room and large uniquely designed eating kitchen. Featuring 3+ bedrooms, 2 baths, single car garage, huge lot, not to mention a finished lower level rec. room and 4th bedroom. Don't miss this opportunity, call listing agent Maurice Miljour today. Asking \$209,500.



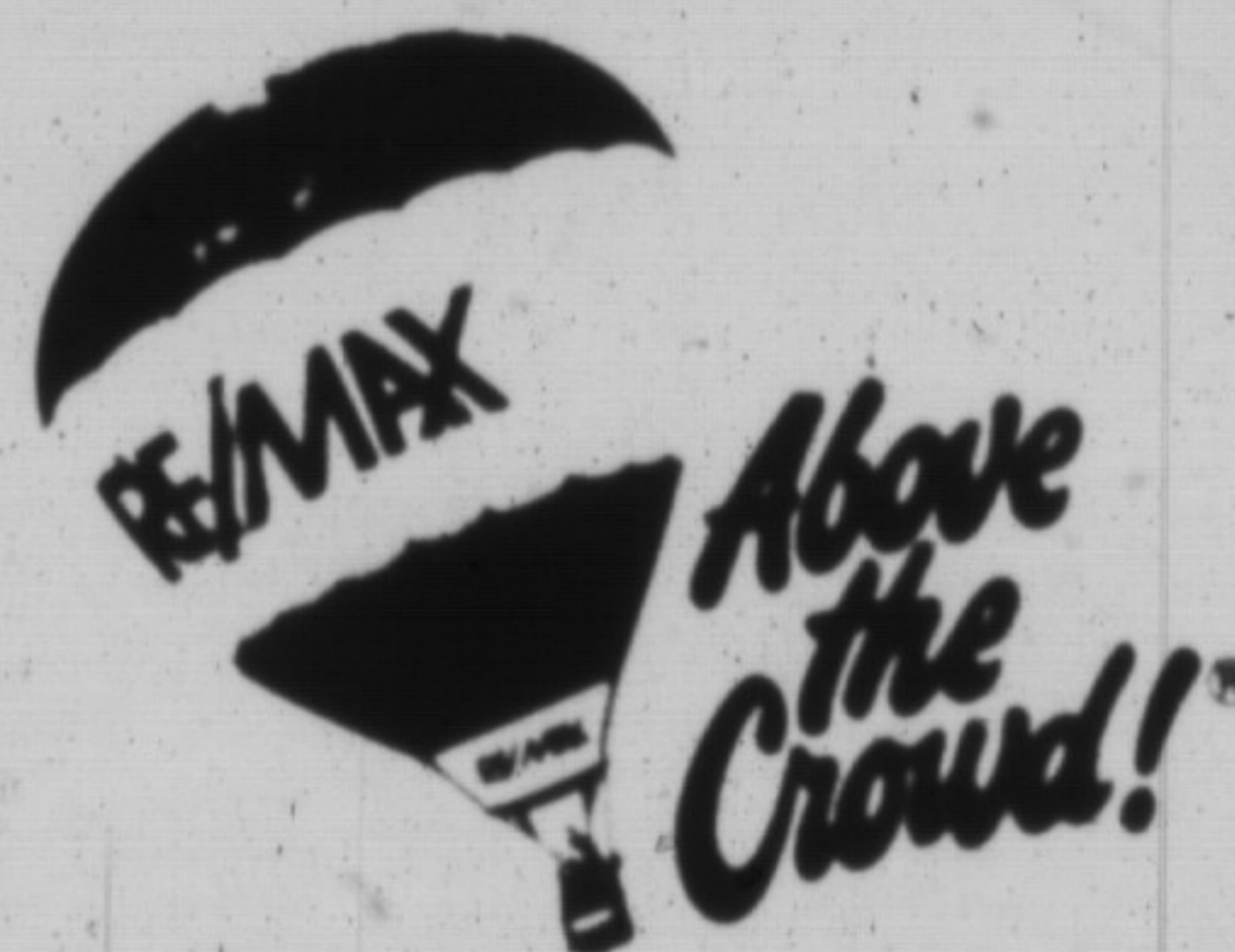
ARE YOU AN ENTERTAINER?

You can be in the 3 bedroom bungalow with 2 baths in Dorset Park. Invite your friends and family over to swim in the inground pool or have a backyard barbecue on the huge lot. Also featuring a finished basement perfect for gatherings, acorn fireplace, built-in dishwasher, new gas fireplace and brand new kitchen and broadband. To view call listing agent Maurice Miljour today.



PLEASING TO THE EYES

Two-storey brick and aluminum semi, close to the schools and shopping features 3 bedrooms, 2 baths, new broadband in bedrooms, new tile floor in kitchen and entranceway, party finished rec. rm., single car garage and a walkout to a beautiful 10x20 cedar deck. Asking \$179,900. For more information or an opportunity to view, don't hesitate to call Maurice Miljour 878-2365.



DOUG J. BUTSON
Office or Pager 878-2365
Res: 878-2054

EXPERIENCED IN RESIDENTIAL, FARM OR COMMERCIAL

INVENTORY SALE! FAVOURED TO YOUR PRICES

- 300' x 300' North Oakville Building Lot with drilled well, next to quality homes and century farm.
- Antiques, small motor repair, truck driver use perfect for this 3+ bedroom bungalow plus barn south of Campbellville.
- Prime Sales Office for lease near GO at Main intersection with 2 inner offices and oak trim.
- 7,000 sq. ft. Free standing commercial building on Steeles Ave. for lease in December.
- Several more In-Town specials for retirees, business start up or employee relocation.