

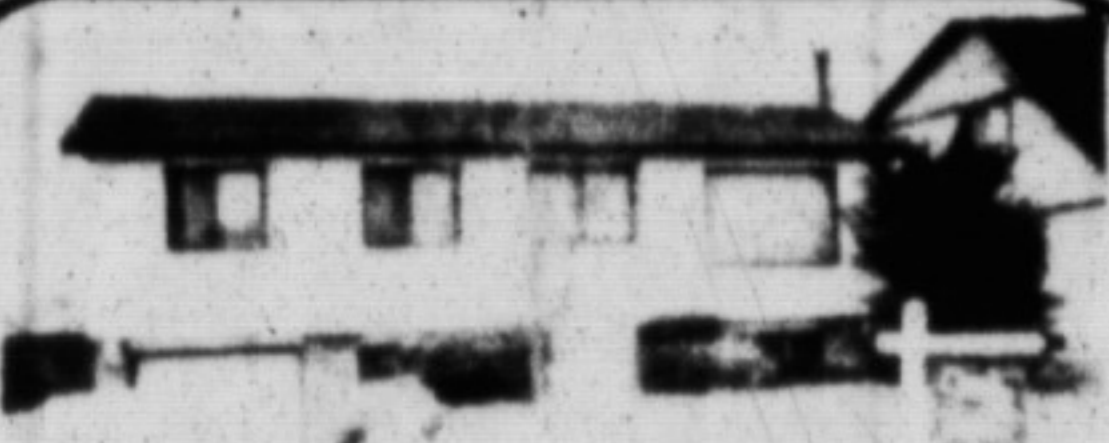
Century 21

420 MAIN ST., MILTON

878-8495 Tor. Line 821-4764

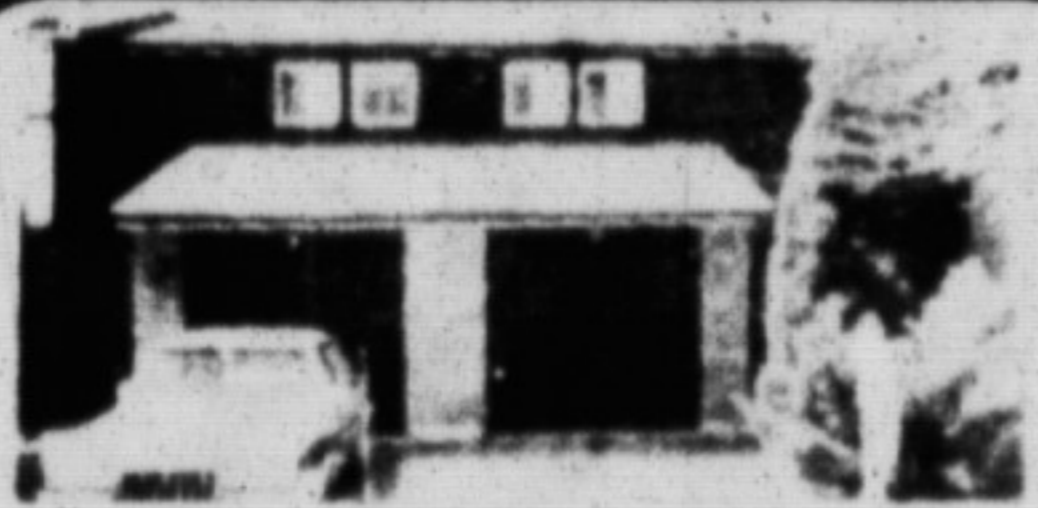
GOLDEN REAL ESTATE LIMITED

Jim & Lorraine Kerr
Brokers/Owners



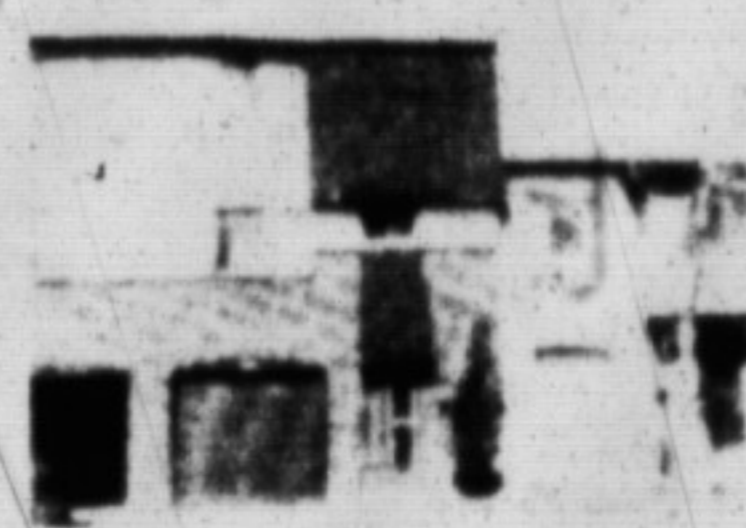
LIKE A PRIVATE PARK

The 3 bedroom raised bungalow boasts an inground fenced pool surrounded by shrubs. The cheery kitchen has patio doors to the backyard greenery. There's more, finished rec room, fireplace, new windows in BR, extra insulation. Can you afford to pass this one up? Listed at \$215,800. For your personal viewing please call SANDRA BAILEY at 878-8495.



LOOKING FOR END OF AUGUST CLOSING?

Then we have the townhouse for you. Oversized master bedroom plus two other bedrooms, 2 baths, finished rec room, unit has been freshly painted throughout, maintenance fee only \$101.75 monthly, with use of pool in the complex. Reduced to \$157,900. Please call SANDRA BAILEY at 878-8495 for your personal viewing.



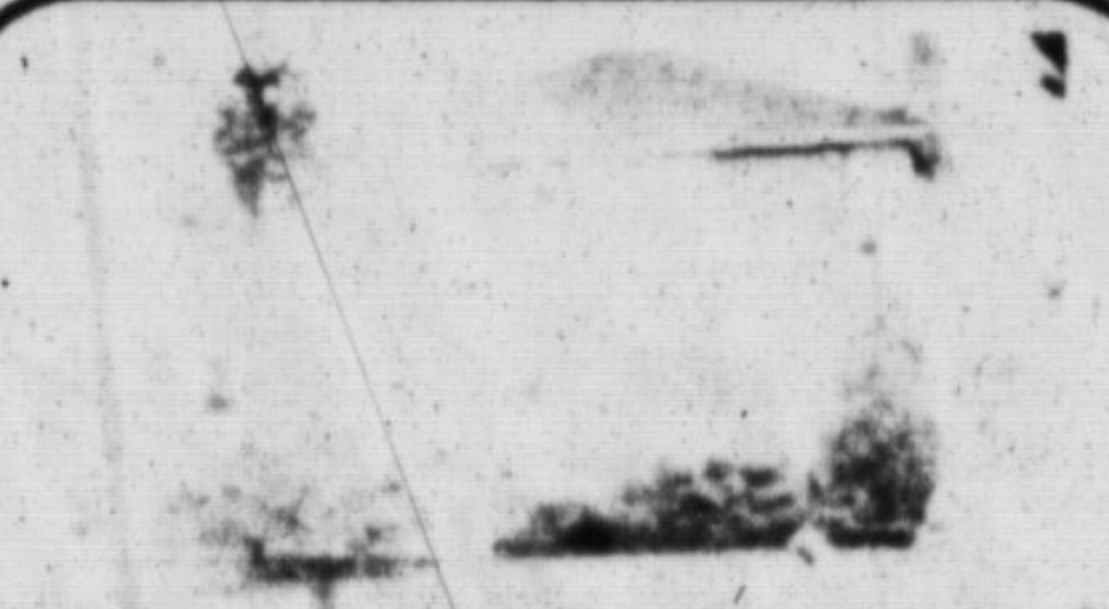
REDUCED QUICK POSSESSION

of this 3 bedroom townhouse will put you in air conditioned comfort for hot summer days. 1 1/2 baths, upgraded kitchen cupboards and a walk-out to a fenced yard. \$152,800. Call RON TWISS for an appointment to see at 878-8495.



4400 SQ. FT. - MAIN STREET COMMERCIAL

Front and back entrance - Lots of Parking. The Price is Right. Please contact JIM KERR for further details at 878-8495.



ATTENTION INVESTORS

Over 10 acres of land with a two story home and out buildings. The property is next to industrial land currently being developed and is now zoned agricultural. Asking \$1,300,000. For more information please call 878-8495 and ask for JAMES D. SNOW.



BE IT EVER SO HUMBLE

Own your own home! Why pay rent or condominium fees when you can have your own large family residential home. This home was built to endure - add to it as the family grows or leave as is and use it as retirement insurance, whether you live in or rent it out. For further information please contact KATHLEEN PERFECT at 878-8495.



HAVE FUN IN THE SUN

in this 4 bedroom detached sidesplit with large private deck from the walk-out in kitchen. Large family room with fireplace and walk-out central vac, new broadloom in BR, double paved drive. All this for only \$278,900. For further details please contact JIM KERR at 878-8495.



25 ACRES PLUS CENTURY STONE HOME

Top of Milton Escarpment. This home has country charm. Features original pine floors & wainscoting. Huge family dining room. Close to 401, schools, and shopping. Asking \$550,000. For more information please call BILL LENZKY at 878-8495.



JUST LIKE NEW!

A 4 bedroom home like this is rare, with new windows, aluminum siding, broadloom throughout, freshly painted and papered, finished basement, central air and more! Asking \$188,900. Please call SCOTT B. PRIOR at 878-8495 for your personal viewing.

SANDRA A. BAILEY
Sales Representative



Bus. (416) 878-8495
Res. (416) 875-0037

WHY NOT GO WITH THE LARGEST REAL ESTATE ORGANIZATION IN THE WORLD?

Let's chat about:
- current market value
- mortgage rates
- investments
- any or all of your real estate needs
Please disregard this offer if your home is currently listed.



FUTURE DEVELOPMENT POTENTIAL

Approximately 133 acre farm with over 2000 ft. frontage on Steeles Ave. This property has two houses, 10 buildings, silos, etc. For more information on this and other land in the area, please contact JAMES D. SNOW at 878-8495.



MAIN ST. MEDICAL BUILDING

Professional office space available immediately. Please call SCOTT B. PRIOR for further details. 878-8495.



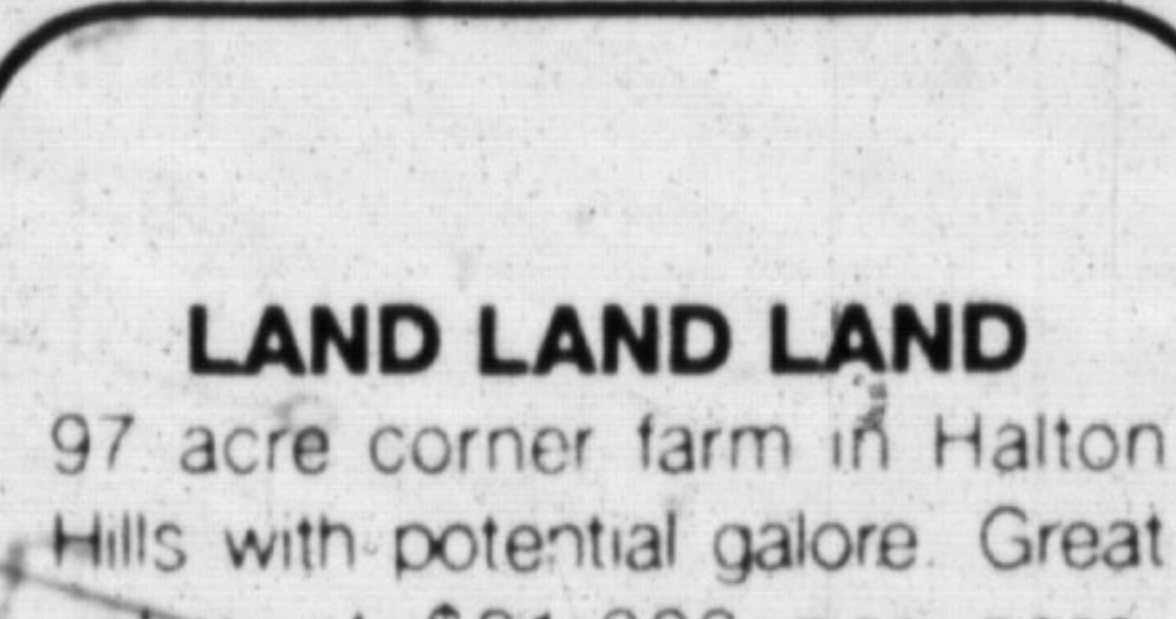
JUNE POSSESSION

As extra large, nicely landscaped yard surrounds this 4 bedroom home featuring valuable extras including large deck, central air and central vac. Priced to sell at \$189,900. JUNE WARNER will be proud to show it to you. Please call her at 878-8495 for your personal viewing.



PRIME MILTON INDUSTRIAL

- 7 plus acres • Hwy 25 + 401 location
 - UP to 50% Commercial potential
 - 20,000+ sq. ft. of buildings.
- Please contact ERNIE ZAMMIT at 878-8495 for further details or your personal viewing.



LAND LAND LAND

97 acre corner farm in Halton Hills with potential galore. Great value at \$21,000 per acre. Please call ERNIE ZAMMIT at 878-8495.



MOTIVATED VENDOR

will take back a substantial mortgage. North South East West - a picture postcard from every window of this large 4 bedroom country home on 16.684 scenic acres. Featuring family-sized kitchen, 2 fireplaces, ground level laundry and family room, finished basement, inground cement pool. Location + +. Asking \$569,000. Please call NOVA SPARKS-AUSTIN at 878-8495 for your personal viewing.



RESIDENTIAL-COMMERCIAL COMBINATION

Very large lot with commercial zoning on half. Also has large older 2 story brick home. For all the details and future possibilities please call JIM KERR at 878-8495.



MATURE PART OF TOWN

Offers the three bedroom property, Main floor family room, eat-in kitchen, appliances included and all for \$183,800. Please call JOAN TATTRE for your personal inspection at 878-8495.



SOLD

FIRST TIME OFFERED

Brick bungalow situated on almost 3 1/2 acres. Separate garage, paved drive, finished basement and living room has fireplace. For more information please call JOAN TATTRE at 878-8495 or (res) 876-1575.



REDUCED TO SELL

Take a look and see this 3 bedroom townhouse with separate dining room, finished family room and upgraded broadloom. Bright eat-in kitchen, a must to see at only \$152,800. Please call RON TWISS at 878-8495 for further details.

Jim Kerr 878-8495
Lorraine Kerr 878-8495
William Lenizky 853-3797
Joe Manchisi 876-4247
Don Peiz 878-1029
Nova Sparks-Austin 878-6728
Charles Kerr 338-7248

Kathleen Perfect 878-1575
Dawn Pope 878-8495
Scott B. Prior 876-1251
James D. Snow 878-2172
Joan Tattre 876-1575
Jim Bailey 875-0037
Sandra Bailey 875-0037
Ross Runnalls 878-6437

420 MAIN ST., MILTON

878-8495

Toronto Line 821-4764

Bill Gear 335-9689
Diane Gibbons 876-4247
Douglas Jones 878-4957
Carlo Giangrande 876-1031
Ron Twiss 878-4056

Lynn Wardle 876-1554
June Warner 853-2918
Sonya Williamson 875-1924
Ernie Zammit 878-9475

Office Staff: Marie Austen, Jennifer Coles, Barbara Wood, Lori Bshenden