



Jahn
REALTY INC. REALTOR
621-9955



FRED MacMASTER
Sales Representative

FIRST-TIME —OR— SEASONED BUYER CONSIDER CAMBRIDGE


NEW SINGLE FAMILY HOMES—
50' X 150' LOTS
PRICED FROM
\$159,900.

RE-SALE HOMES TO ACCOMMODATE MOST BUDGETS

**VISIT ME AT
THE HERIGATE INN,
MILTON
THE TROPICS LOUNGE
MARCH 18, 1989
1:00 p.m. to 5:00 p.m.**

Telephone: Res. (519) 740-6868
or Pager (519) 654-7106

**ACT NOW BEFORE SPRING PRICES INCREASE
DON'T BE DISAPPOINTED!!**



REID'S HERITAGE HOMES LTD.

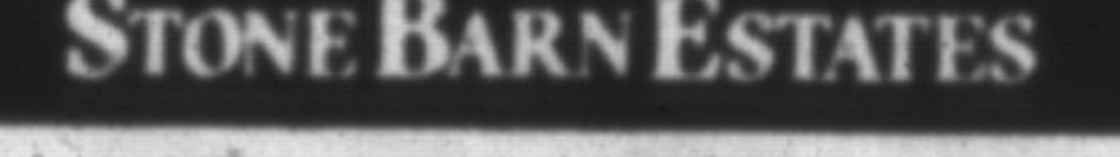

RENTAL TOWNHOUSES

2 Bedrooms from \$795⁰⁰ per mo. + utilities
3 Bedrooms from \$895⁰⁰ per mo. + utilities

- Gas heat • 1-1/2 baths
- Some units with walkouts and garages

REID'S HERITAGE HOMES LTD.

(519) 767-0751

STONE BARN ESTATES

ONLY 8 LOTS LEFT

In the scenic village of Rockwood, set on an inspiring 31 acres surrounded by 25 acres of woods, hiking trails and two rivers, a community of 31 homes has been created.

Select your FULLY SERVICED lot from remaining sizes of 62 to 1.09 acre. The home you choose (minimum 2,500 sq. ft.) will be custom crafted for you by Hugh Sutherland & Sons Ltd. Prices from \$345,000.

Enjoy country living in this idyllic setting. Drive out this weekend or call NOW for further details.

Represented by
W. H. BOBLEY & CO. LTD., REALTOR
(Area 416) 845-8350

Colleen McGaw Associate Broker Res: 844-5379

Nancy Matthews, Sales Representative Res: 845-3924

Country living at its finest




REALETY WORLD™
MEMBER BROKER

Specializing in Residential & Farmland

Ron MacNeil
Sales Representative

REALETY WORLD™ - Colbeck
T.R. Colbeck Real Estate Inc.
485 Main Street East,
Milton, Ontario L9T 1R1
MILTON 876-1133,
OAKVILLE 845-8888
Res. 878-0198

\$199,000

Large eat-in kitchen with all appliances, family room, 1 bedroom, living room & bath on main floor, 2 large bedrooms with bath on 2nd floor, large garage & wood storage all on treed village lot, 60x165 in excellent repair, must be seen.

\$109,000

Small but everything is neat and clean, 1 bedroom plus 1 bedroom in basement, single garage with loft, paved drive, deck & patio priced to sell quick.

DON McMILLAN
REAL ESTATE
MOFFAT, ONT.
854-2435




RE/MAX
ABOUTOWNE Realty Corp.
60 Lakeshore Rd. W., Oakville

COUNTRY BARGAIN

REDUCED TO \$279,000. and within 5 minutes of Milton. Renovations include thermal windows, new bathrooms, ABS plumbing, 200 AMP electricals, new well pump and more. Outside steel clad building, 32'x24'. House has charm and character and 1/4 lot is uniquely private. Call MAGGIE or CRAIG NEWLOVE 338-9000.

COMING SOON



A Life to capture your family's heart.



The gathering of family. The warmth of a country spirit and good neighbours. These are the values to celebrate in a proud new family community in Shelburne.

Fiddler Hill Estates is a sheltered enclave of well-crafted home designs complemented by a host of country fresh features. Come home to a setting that embodies the joys of four seasons living, to a neighbourhood of parks, schools and recreation, where children can feel free to play and family values are cherished.

For families who love their life together, welcome home to your kind of town, your kind of community. Fiddler Hill Estates, in Shelburne.



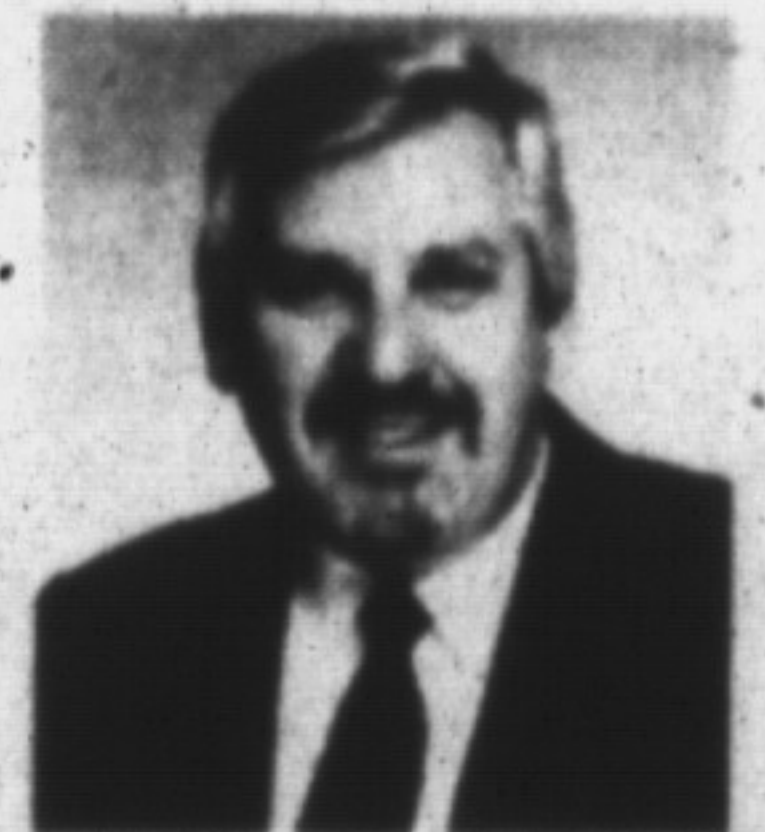
Beautiful Family Homes from \$139,990

Fiddler Hill Estates — Love the life you live.

SALES OFFICE:
Located in the town of Shelburne at the northwest corner of Highways 10, 24 and 89



Priority registration number
(519) 925-3025



Walter N. Dorosh, M.B.A.
President