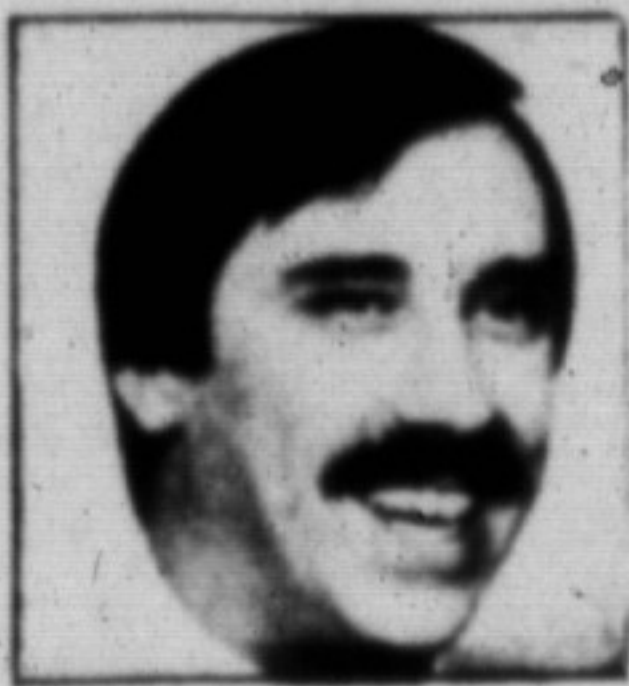




ROYAL CITY REALTY



MELANIE PORTER



DAVE ADDISON



BARBARA GLENN



WAYNE CASSON



LAWRIE GIVEN



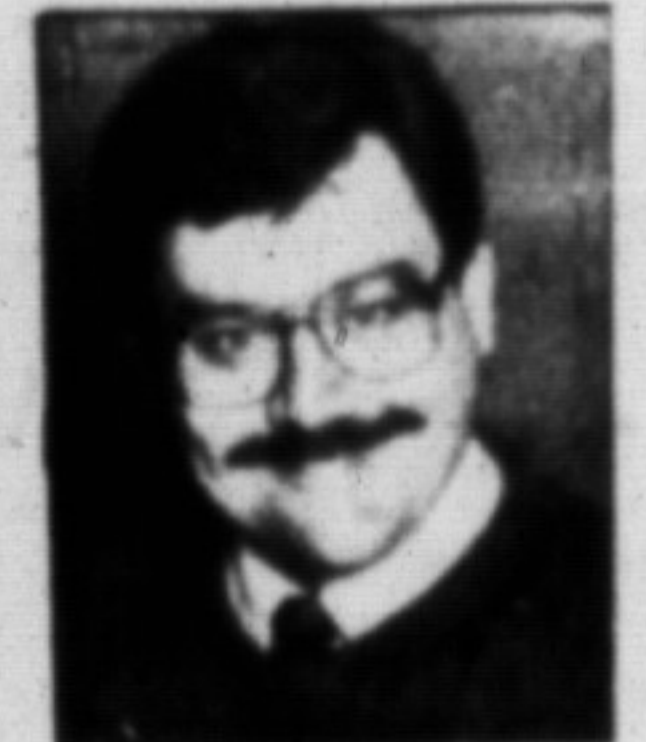
DAPHNE COULTER



EVA GOODING



GLADYS CRANFORD



BRIAN GREEN



BILL CURRIE



ANDY GULLEY



BERT DAVIS



SHARON KERLEY



JOHN (J.P.) PEARS

COMMERCIAL SPACE FOR LEASE

Main Street location with plenty of parking. Call Don Smith for further details. 876-1156.

HAPPINESS IS ...

...being your own boss. So don't miss this opportunity to invest in this well-established pizza and Italian food restaurant. High traffic location. Asking \$65,900. John (J.P.) Pears 876-1156.



TIMELESS CLASSIC

Beautiful 3-plus bedroom raised ranch home set on over 3/4 acre just minutes to town. Offers spectacular view of escarpment, 20' x 40' inground pool, and many updates. See this property soon. Katrina Walton 876-1156. M9035



VILLAGE HAMLET

This cute country home is situated on just under one and one-half acres, a large two storey garage, three bedrooms, livingroom, dining room, country kitchen and with your tender love and care, this could be your new family home. Asking \$199,900. Call Wayne Casson for further details. M9032

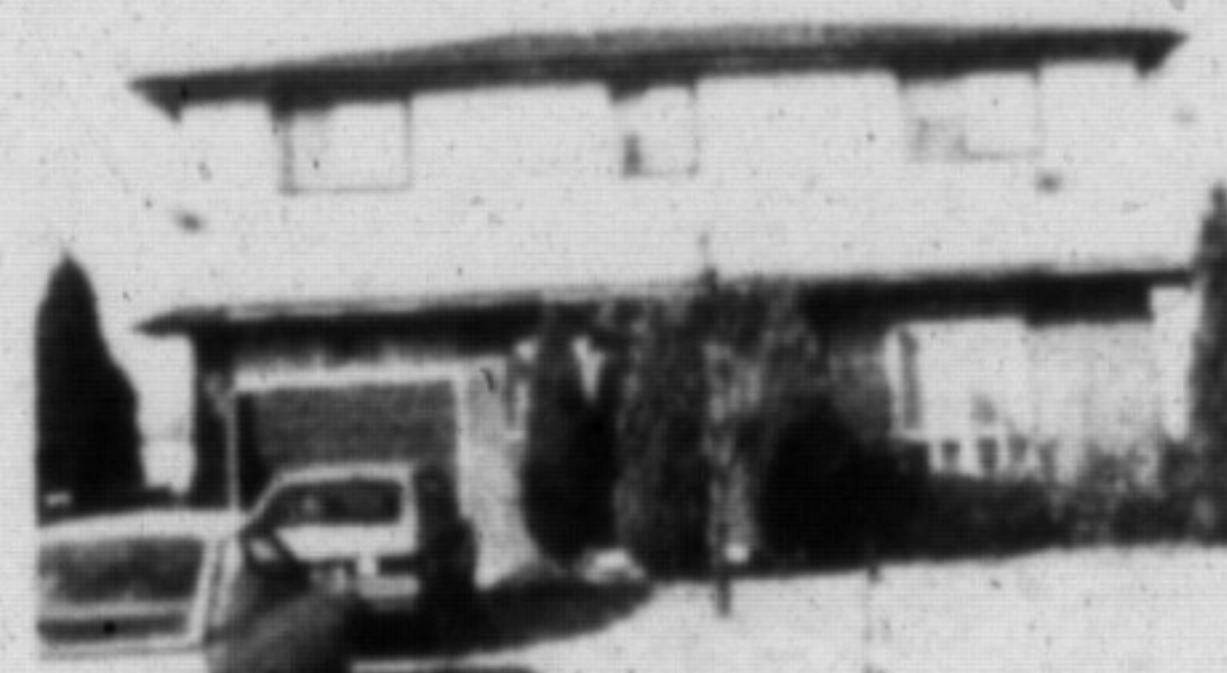


FEATURING

One well maintained home on a private lot. Offers three bedrooms, eat-in kitchen, separate livingroom, rec. room plus den or 4th bedroom. Listed at \$179,900. Ask for Bill Currie. M9025

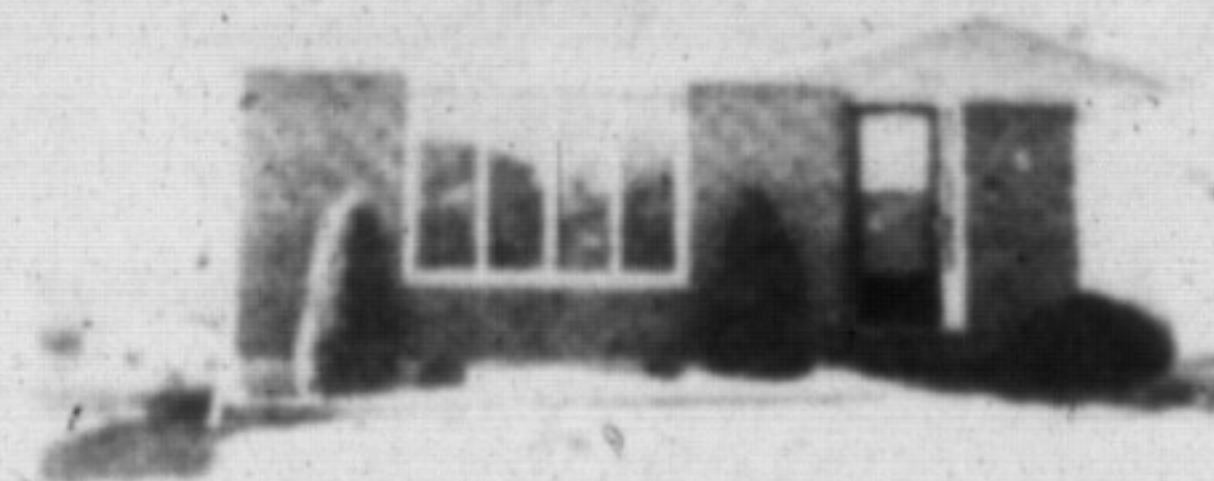
ESCARPMENT FARM

This beautiful farm at the base of the escarpment offers 58 acres, mixed bush, three barns with a century stone home all within 6 miles of downtown Milton. Call Andy Gulley for your viewing. Asking \$1,700,000. M9026



A SWEETHEART OF A HOME

Located in Dorset Park, 4 bdrms, w/new carpet. Freshly painted thruout. Finished basement in tongue & groove pine. Eat-in kit, B/I dishwasher, New furnace of Nov. '88, central air, and there's more! \$189,900. Call Lawrie Given today. M9017



LOOKING FOR A GOOD DEAL?

This bright and spacious 3 brm. bungalow is just for you. Only \$134,900 for more detail call Yvonne Gawlig. M9019



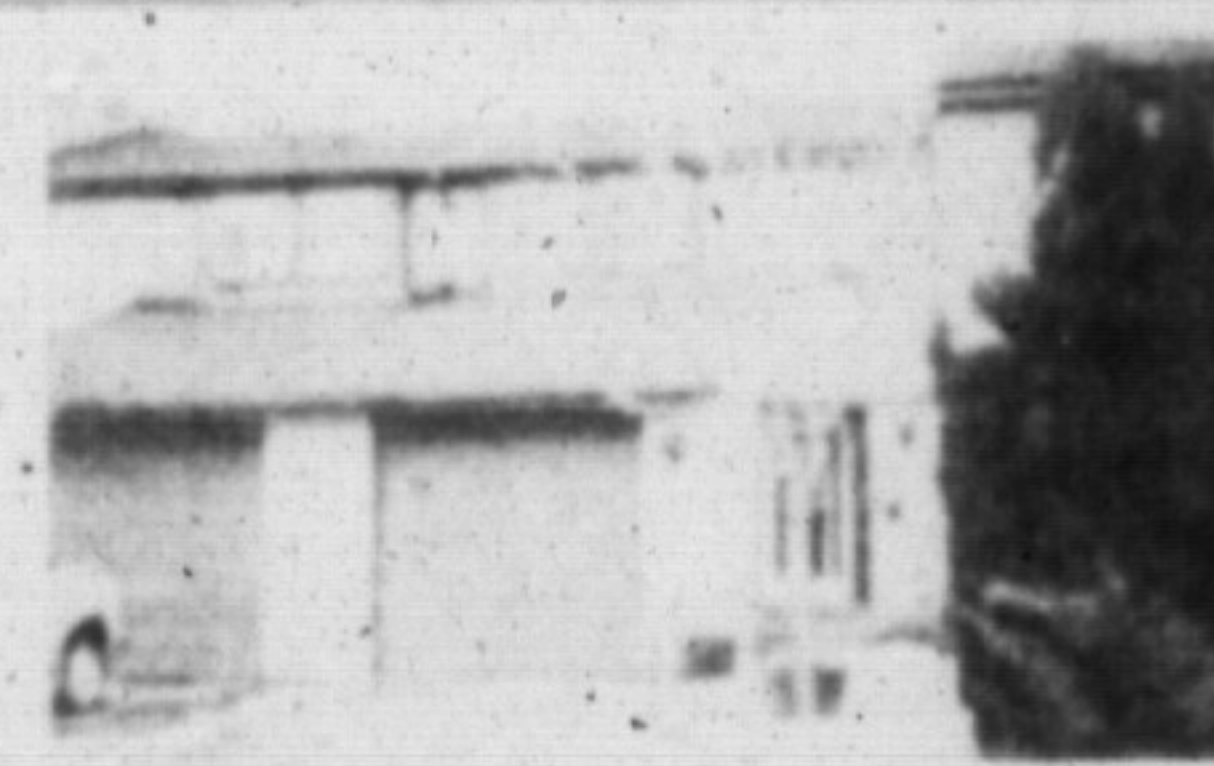
\$199,900 SIDESPLIT - MILTON

Priced to sell A.S.A.P., large 3 plus bedrooms, central air, central vac., above ground pool, main floor family room w/F.P. Personal viewing thru Muriel Tucker 876-1156. M9006



EXECUTIVE CUSTOM BUILT HOME

Four bedrooms, three fireplaces, central air conditioning, central vacuum, heat pump, three washrooms, extra large basement, all make this estate size home an attractive buy at \$398,000. Call Wayne Casson to view this home. M9009



MILTON TOWNHOUSE

Which comes complete with rec. room facilities, pool use, and more. Asking \$146,900 for this immaculate three bedroom home. Take time today to inspect this one with Wayne Casson. M9016



A RARE FIND

Contact Bill Currie to view this unique home located near downtown. Features include three bedrooms, two washrooms, eat-in kitchen, separate living room and dining room, main floor family room and loads of charm! Offered at \$224,900. M9007

NEW LISTING MOVE-IN BEAUTY

Curb appeal is this 4 br. 2 storey home with it's brass accessories and lovely yard. Quiet crescent in Dorset Park in Milton. Once you view it you will want to live there. Call Muriel Tucker 876-1156. M9035

VIEW THIS ...

You'll be glad you did move right in, everything is done. Comes complete with 4 bedrooms, finished rec. room, eat-in kitchen with built-in dishwasher, new windows, new broadloom in living/dining room. New kitchen and hall floors. Tastefully decorated. Listed at \$158,900. Call Eva Gooding. M9038

NEW EXCLUSIVE

Bungalow with 3 bedrooms, finished basement. Sharp as a new pin. Large lot. Please ask for Stewart Haddon for more details. Listed only \$182,900. M9027

David Addison 878-7079
Wayne Casson 878-0466
Daphne Coulter 875-1636

Bert Davis 878-2908
Yvonne Gawlig 332-0219
Barbara Glenn 519-853-0923
Lawrie Given 876-1961

Andy Gulley 849-7046
Stewart Haddon 878-3333
Sharon Kerley 854-0474
Sheryl Muir 875-1121

Don Smith 876-1237
Muriel Tucker 878-4927
Debbie Cosulich 876-4333
Mark Rapke 338-6960



DEMAND THE BEST

64 ONTARIO ST. N., MILTON

876-1156

TOR. LINE 826-6390

24 HR. ANSWERING SERVICE