

# ROYAL LePAGE



### CLASSIC NEW ENGLAND ON 2 ACRES

\$468,000. to be built on very scenic lot on quiet country road. This quaint Cape Cod features: traditional centre hall, FP's in living room & family room, sep. dining room, library, charming kitchen, lrg. bedrooms, etc. Campbellville area. Inge Winther 826-9218.



### CLASS TUDOR ESTATE —4 ACRES

Set majestically on manicured lawns adorned with mature trees & pond, this atmospheric 2 storey features: traditional centre hall, FP's in living rm. & family rm., study beautiful kitchen with built-ins. Prof. landscaped, reg. tennis crt., etc. Inge Winther 878-8101.



### Laurier Townhouse

Just listed, this spacious and spotless home is sure to please. Lovely living room with view of countryside, walkout from main floor family room, central air. \$149,900. Hurry and call Jean Thomson 878-8101.



### CHARMING CAPE COD

\$369,000. Nestled on 2 acre lot in scenic Campbellville area, this 2 storey features: Traditional centre hall, F.P. in living rm., sep. dining rm., family rm., kitchen with walkout, 4 bdrms., etc. Denzil Lawrence, 878-8101.



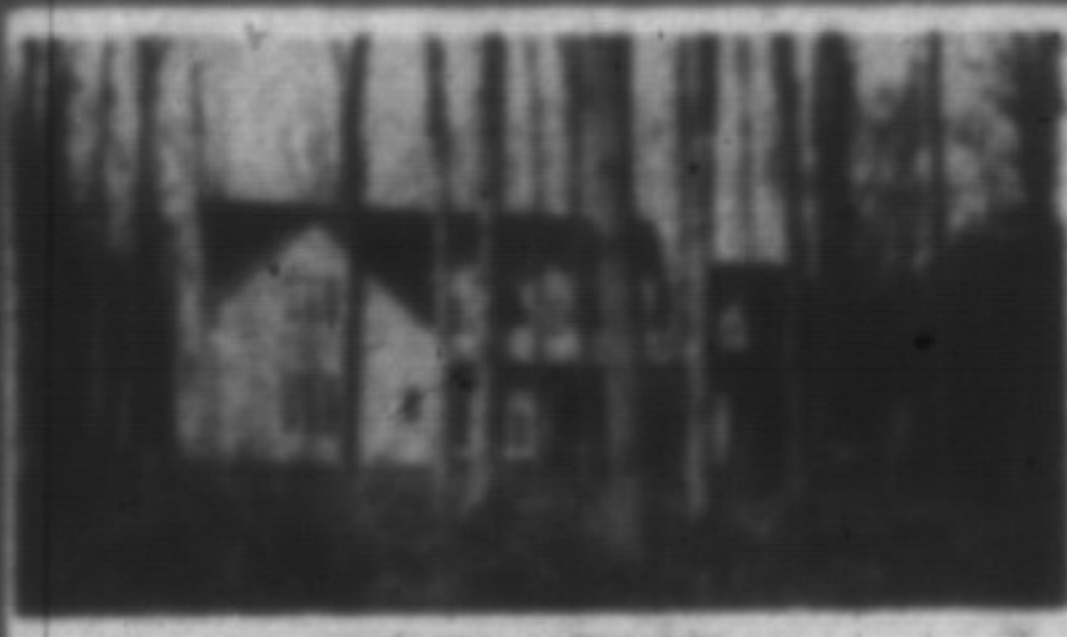
### 67 COBBLEHILL RD., ACTON OPEN HOUSE

JAN. 29th—3-4 P.M. \$179,900. all brick bungalow with 1/3 pool, 3 bdrms., plus bdrm. in lower level, fin. rec. rm., cold room plus lots of cupboards. Well built home in good location. To inspect or more information ask for Bill O'Neil, 878-8101.



### "OPEN HOUSE" SUNDAY, JAN. 29th 1:30-4:00 P.M.

861 CHILD'S DRIVE Don't miss the opportunity to view this well-appointed 4 bdrm. all brick home. Central air/vec, "L" inground heated pool, skylight & bay window in kitchen & much more. \$269,900. Marg Swain, 878-8101.



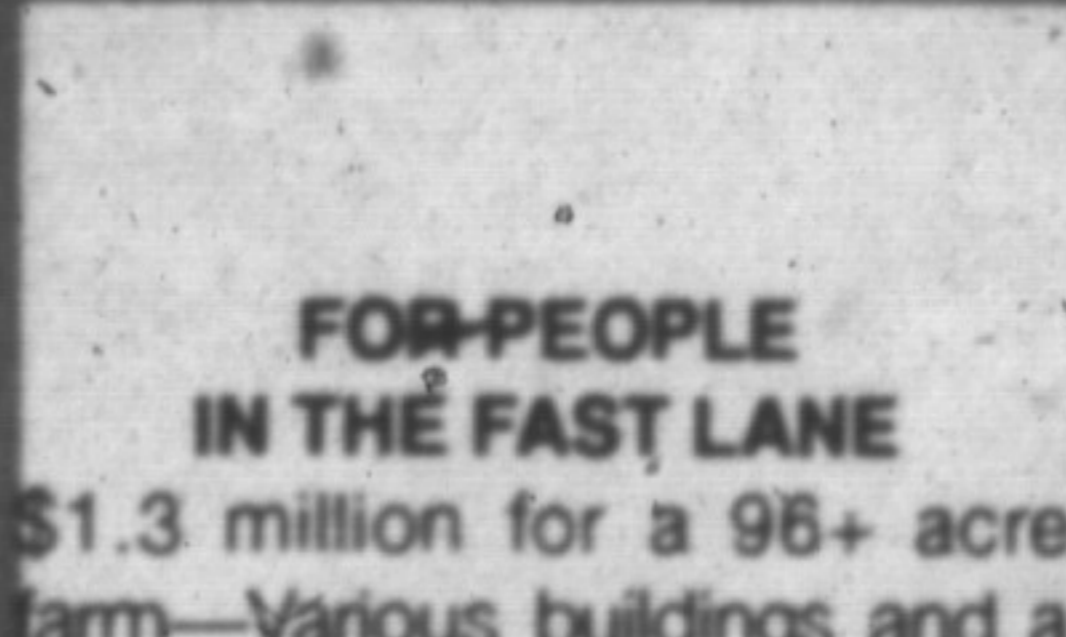
### EXQUISITE ESCARPMENT ESTATE

Majestic stone, 2-storey nestled on scenic 5-ac. wooded lot with stream. Very private & secluded in area of large estates. This gracious estate features lrg. sep. dining rm., library, family rm., lrg. kitchen with FP & built-ins, 5 lrg. bdrms., sep. maid's quarters designed & decorated for the ultimate in prestigious living. Inge Winther 878-8101.



### NEW LISTING

TOWNHOUSE Immaculate, neutrally decorated 3 bdrm., 3 bath townhouse shows to perfection. Call Sandi Kinsale to inspect.



### FOR PEOPLE IN THE FAST LANE

\$1.3 million for a 98+ acre farm—Various buildings and a 3-storey dwelling. Two road frontages, great location, minutes to 401, just north of Steeles. Excellent water supply on property, ideal for investment. Marg Swain, 878-8101.



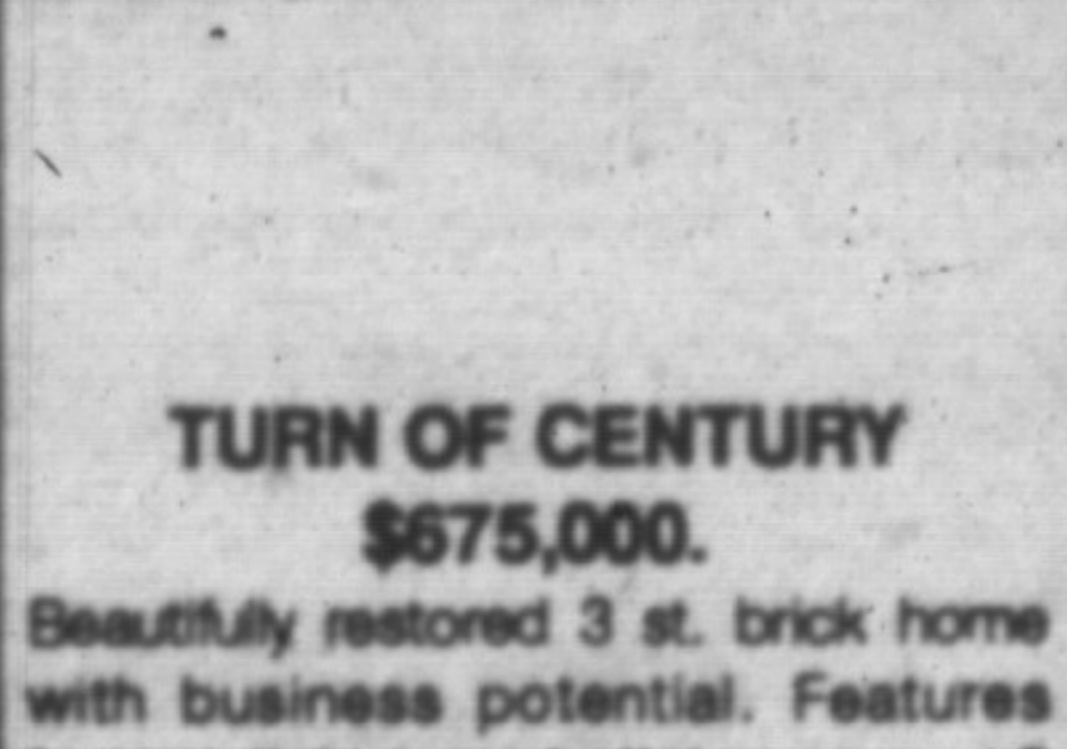
### TOWNHOUSE \$149,900.

Immaculate neutrally decorated 3 bdrm. 3 bath, townhouse shows to perfection. Separate din. rm. plus eat-in kitchen. Call Sandi Kinsale to view.



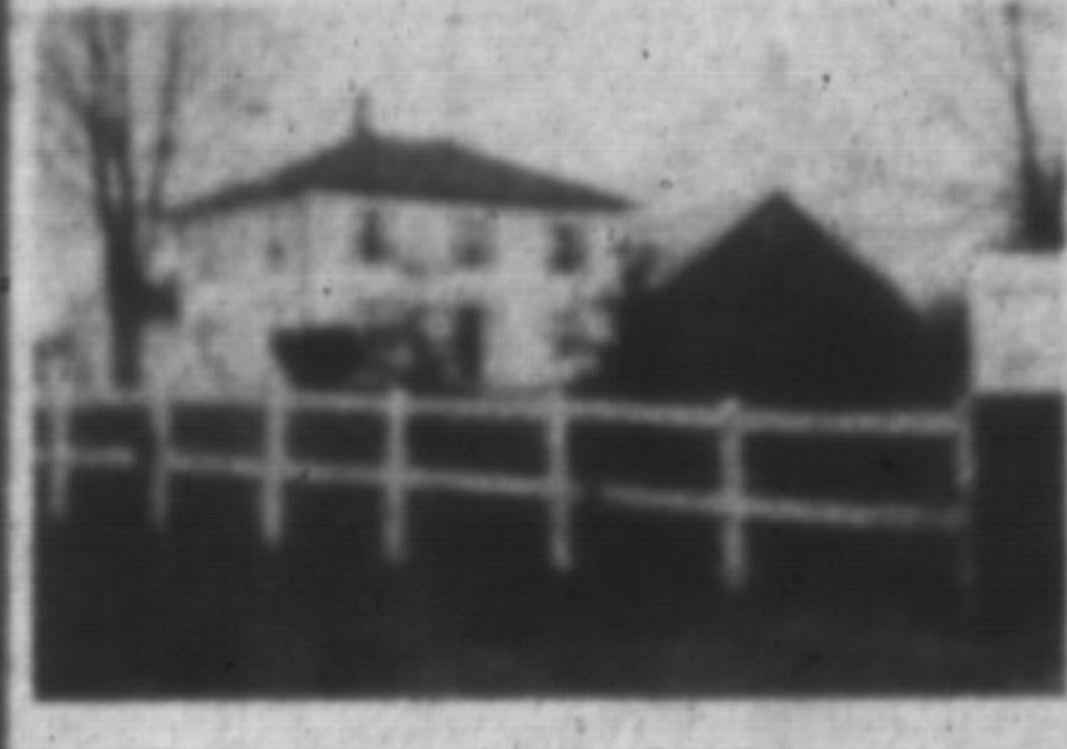
### DREAM HOME

Gracious foyer has circular staircase leading to 4 large bdrms., M.B. has step-up to oval tub, greenhouse kitchen allows sun to pour in all day. Basement is finished with sauna and bar. Call Sandi Kinsale.



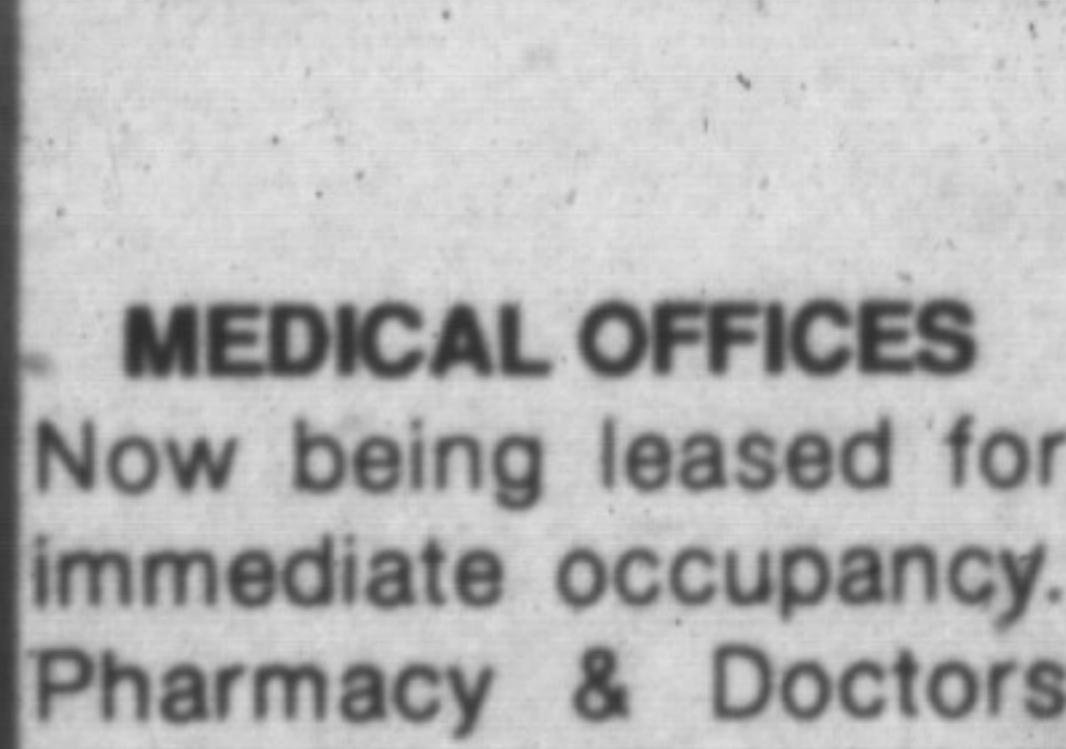
### TURN OF CENTURY \$675,000.

Beautifully restored 3 st. brick home with business potential. Features formal living and dining rms., 6 bdrms., 3 baths, fam. rm., office, ing. pool, workshop/dble. gar. 3/4 acre. Please call for appointment. A. Lear Costigan, 878-8101



### THOROUGHbred FARM

147 acres of lovely escarpment property. Excellent frontage, pond & artesian well. Updated century home, barn and arena, lounge, tack rm. and total of 34 box stalls. Asking \$1,900,000. To inspect call Norma Proveau 878-8101, 826-99218.



### MEDICAL OFFICES

Now being leased for immediate occupancy. Pharmacy & Doctors operational. Space still available. Call for more information. Sandra Logie 878-8101.



### CUSTOM BUILT ENGLISH MANOR

In Ennisclaire Woods and set on 2-1/2 acres with a pond, is awaiting your final touches. Builder's package is most generous. Approx. 3800 sq. ft. of fabulous living space with a 955 sq. ft. master bdrm. retreat. Exquisite architectural detailing both inside & out. For those that demand the best and want only quality this is it. \$649,000. Sandra Logie/Joyce Hagevik 878-8101, 826-9218.



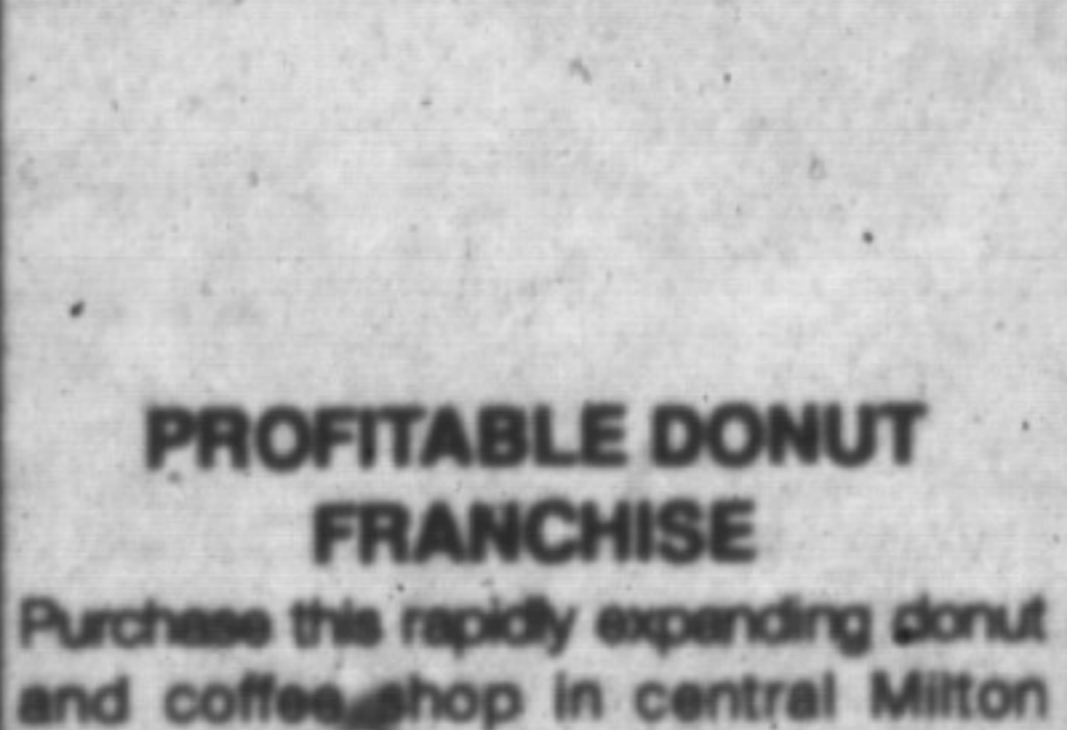
### CAMPBELLVILLE AREA

\$458,000.00. Farmhouse reproduction. 3130 sq. ft. offering 5 bdrms., 4 baths, main floor fam. room with FP, separate dining plus 400 sq. ft. attic. Plus a 2 car attached garage. On a beautifully treed 2 acre lot. Call Les Bunker.



### NEW LISTING \$229,900.

Spacious 3 bdrm. backsplitt features large fam. rm. with FP, sep. din. rm., 2 full baths, European kitchen, plus much more. Call Sandi Kinsale to view.



### PROFITABLE DONUT FRANCHISE

Purchase this rapidly expanding donut and coffee shop in central Milton location. Asking \$259,900. For further details please call Renee Harrold 878-8101.



### YOU MUST SEE THIS!

Set on almost 3/4 acre in an area of other custom built homes—This lovely 3 bdrm. sidesplitt has a main floor family room with oak floor and beams, huge cedar deck and more. Asking \$349,900. Renee Harrold, 878-8101.



### "SOLD IN ONE DAY" SPACIOUS BACKSPLIT \$249,900.

This 4 bedroom home shows to perfection and features central air, inground pool, large entrance foyer, gorgeous family rm. with fieldstone F.P. and walkout to patio. Must be seen. To view call Karen Irvine 878-8101.

388 MAIN ST. EAST

878-8101

(Tor. Line) 826-9218

Toll Free 1-800-263-4176



### SECRETARIES

Gayle Ford Wendy Oleszkowicz  
Wendy Girard Shirley Botterill  
Merry McIsaac

### LAMONT LEONE — Manager

Karen Irvine 876-4154  
Donna Syms 878-3112  
Les Bunker 519-856-4352  
Denzil Lawrence 878-1944  
Margaret Swain 878-7687  
Connie Reynolds 876-4480  
Ed Proveau 876-1707  
Joyce Hagevik 876-1084  
Isabell Hoskins 854-2131  
Inge Winther 853-1990  
Norma Proveau 876-1707

Denise Kerslake  
Lizon 876-1735  
Audrea Lear  
Costigan 878-9151  
Bill O'Neil 878-2679  
Sandi Kinsale 878-0392  
Sandy Del Papa 878-5229  
Barbara Crowe 878-7875  
Sandra Logie 878-1881  
Jean Thomson 878-0767  
Renee Harrold 878-4526  
Andrew Wilson 854-0256  
Mark Symonds 822-5886

It's you that counts the most.

Royal LePage Real Estate Services Ltd., Broker.