



Miltowne Realty Corp.

22 Ontario St. South

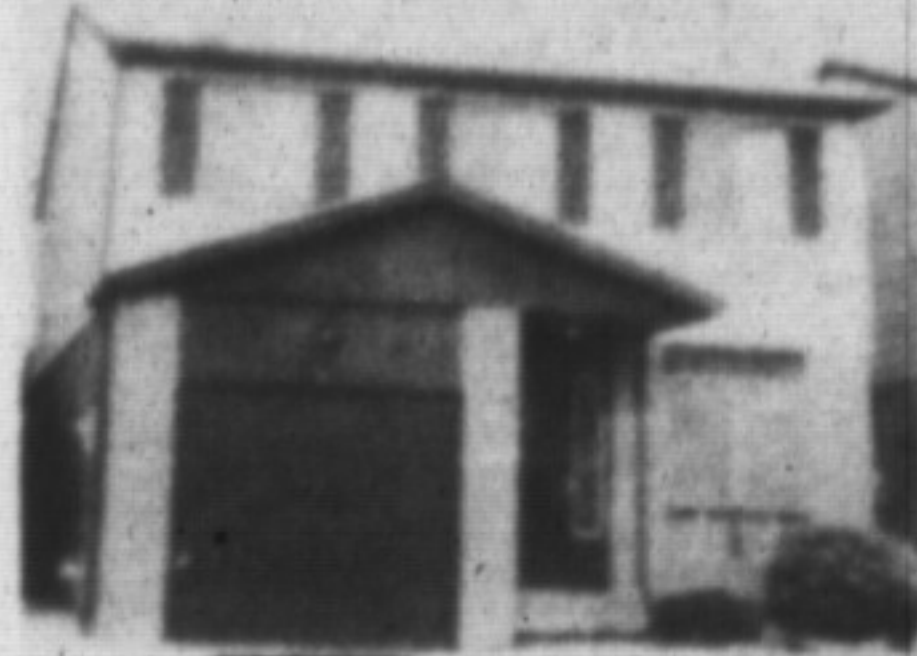
878-2365



JEAN SNOWDEN
878-2365
878-3155



DON'T SIMMER THIS SUMMER
(Remember last year?) This air conditioned 4 bedroom home has a fireplace, rec room, extra parking and a large fenced yard. Call Jean ... \$174,900.



WHAT BETTER WAY TO START THE NEW YEAR

Move into this 4 bedroom home with fireplace, eat-in kitchen, situated on a quiet crescent close to schools and park. (Early possession possible.) Call Jean ... \$172,900.



FREDA LAWRENCE
Home 878-4860
Bus. 878-2365



BUILDING LOT

All ready for Spring building 105' x 197'. On town water. Asking \$81,900. Call Freda Lawrence 878-4860.



ANGELIKA BEISNER

B.A. Sc.
Bus: 878-2365
Res: 878-7057



EXTRAORDINARY TOWNHOUSE LIVING!

Designed for today's lifestyles - minimize maintenance and maximize leisure! Features: Cathedral ceiled living room, main floor family room and laundry room, convenient access to all amenities, plus desirable location! This home is instantly appealing and decorated lovingly in neutral tones! Sound interesting? For further information call

Angelika Beisner

\$152,900.



LINDSAY J. McLAREN

Office: 878-2365
Res: 854-2451
Pager: 878-2020 Pg. 357
Tor. Line: 826-1030

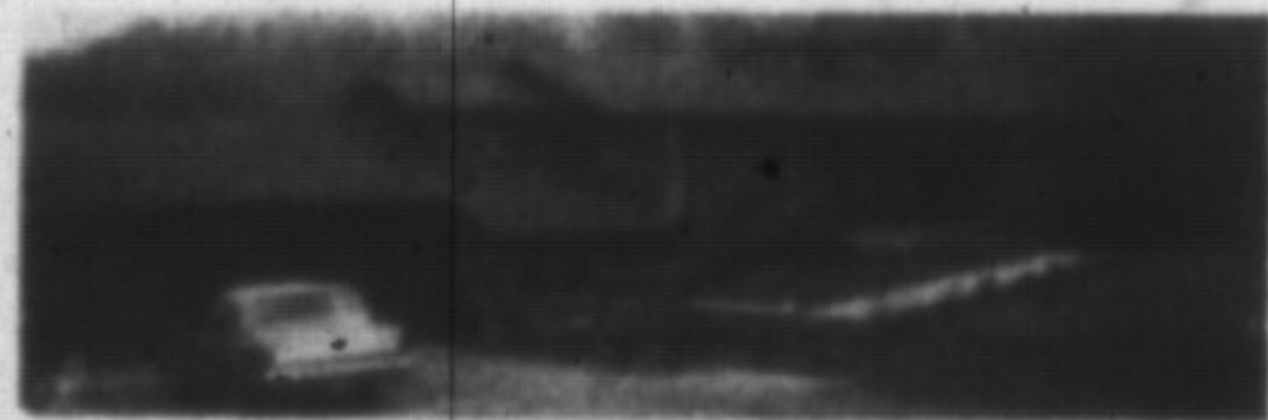


MOFFAT EXECUTIVE ENGLISH TUDOR
located in the village of Moffat. Quality built and unique in design with numerous upgrades and extras and boasts the finest of rural residences with approx 3500 sq. ft. of living space and features separate living and dining rooms, main floor den, laundry room & huge custom kitchen open to family room, 4 spacious bedrooms, super ensuite, 3 fireplaces, broadloom and hardwood floors. Situated on a 1 acre lot. To view this fine home call
LINDSAY J. McLAREN Asking \$469,900



THIS HOME'S GOT NOTICEABILITY

Laurier built 2330 sq. ft. Main level consists of living and dining rooms, family-sized kitchen, main floor family room and laundry and 2 pce. washroom. Upstairs we have 4 bedrooms, 2-4 pce. baths and plenty of closet space. Basement level has finished rec. room, 5th bedroom and 3 pce. washroom. Discover the room you need!
LINDSAY J. McLAREN Asking \$259,900.



MOFFAT COUNTRY — 2.7 ACRES

Unique design compliments this brick frame bungalow has sunken living room with fireplace, dining room, 3 good sized bedrooms, kitchen has separate breakfast area. Full finished basement. Situated on a quiet-country road with 146' frontage. Call

LINDSAY McLAREN
ASKING \$279,900.



**5 MORE AVAILABLE
CUSTOM BUILT HOMES**

Located in Campbellville Country Meadows dor Moffat quality built homes on 1 acre lots and more. 5 choice lots to choose from. Colonial, Georgian, Cape Cod, Victorian, English Tudor styles. Builder is flexible on plans and specifications to suit purchaser.

**FOR MORE INFORMATION PLEASE
CALL LINDSAY J. McLAREN
PRICED FROM \$419,900.
4 HAVE SOLD
5 MORE TO CHOOSE FROM**



VICTORIAN CHARM

Quiet streets in established area with well kept homes is home to this Victorian 2 storey restored throughout. Formal living room & dining room, 3 bedrooms, choice contents make this a pleasure to see and a joy to own.

LINDSAY J. McLAREN
ASKING \$439,900.



Finished office space — up to 3150 sq. ft. — main plus second floor. Was — \$1,250,000.

**NOW \$1,090,000.
LINDSAY J. McLAREN**

Short Term Rental
3 bdrm. link home, Jan. 30 to March 30 \$1,000/mth. Call Lindsay McLaren.

Call The Warners for your
Town and Country Connection

878-2365
878-1084
TOR. LINE 826-1030



878-2365

RE/MAX
miltowne realty corp.
22 ontario street south
milton, ontario L9T 2M8
bus: 878-2365
toronto line: 826-1030



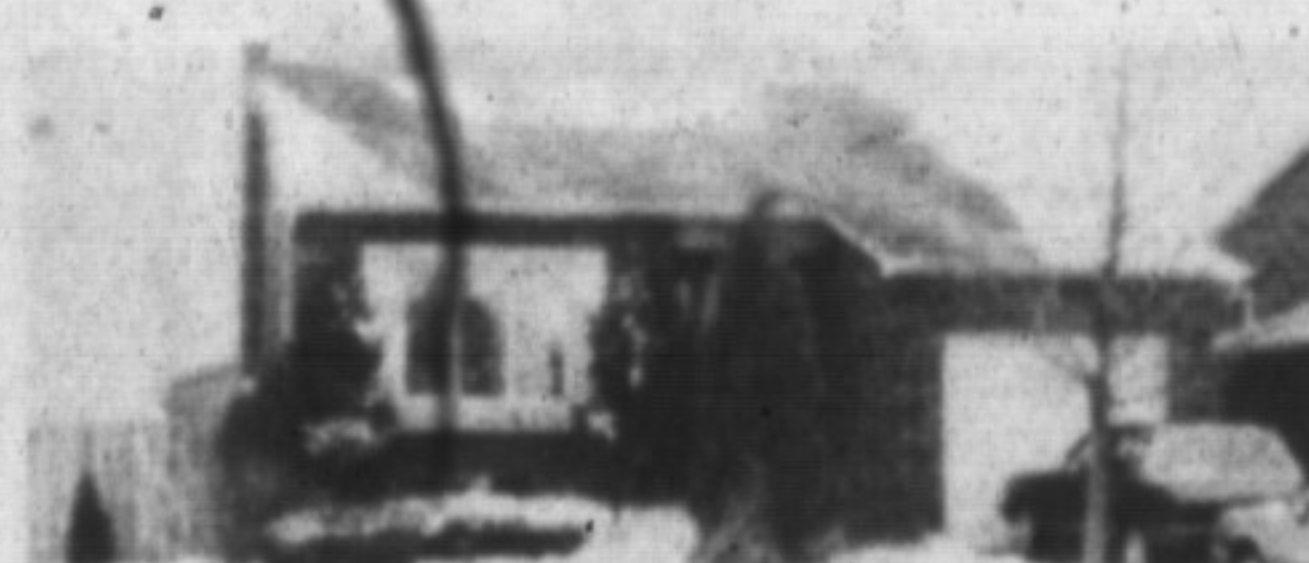
WHY PAY MORE?

Be a shrewd buyer, investigate this 2 storey, semi-detached home. Priced to move at \$164,900.



EXECUTIVE KNOCK-OUT

See this lovely Timberlea split today! Full ensuite bath, inground solar heated pool, family room, wet bar, European kitchen and more! \$264,900.



DON'T MISS THIS ONE!

Friendly neighborhood is the setting for this comfortable 3 bedroom home. Family room with fireplace and large fenced lot will make it easy to settle down here. Asking \$214,900.



MIKE MORGAN
878-2365
878-8093
826-1030
(Tor. Line)



EXCLUSIVE, ESTABLISHED AREA

Newly painted raised tudor bungalow, finished and ready for living with new broadloom, main floor 3 bedrooms, sep. dining room, finished lower level with extra bedroom and family room. Fireplace, central air. Extensively landscaped. 120' frontage. Please call Mike. Asking \$209,900.



JUST YOUR SIZE

Charm and elegance permeate this remodeled Victorian home. The formal living room, dining room, front foyer and completely restored kitchen and baths, invite elegant entertaining. Three large second floor bedrooms with a master suite and adjoining dressing room, ensuite and whirlpool, offer all the amenities of luxury living. The prestigious location, backing onto parkland, makes this a must to see. Please call Mike Morgan, \$439,900.



ACROSS FROM BRUCE TRAIL

Building lot 122' x 199'. Beautiful tree setting on secluded road. \$114,900



Miltowne Realty Corp.

22 Ontario St. South

878-2365