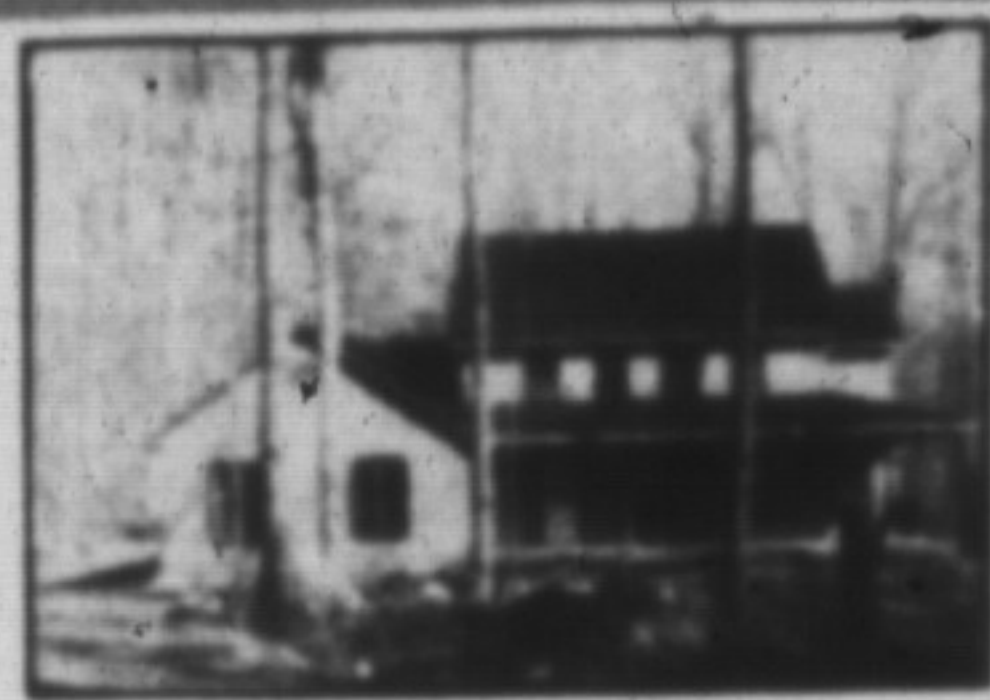




IT'S GOOD TO KNOW...
SOMEONE WHO KNOWS.



CLOSE TO CAMPBELLVILLE

\$458,000 Farm house adaptation with a bright, comfortable floor plan of 3260 sq. ft. that includes 5 bdr., 4 baths, separate dining, main floor fam. and laundry plus a very large old fashioned attic. Comes with a 2 car garage and a beautifully treed 2 acre setting.



OPERATING THOROUGHBRED HORSE FARM

Situated on 147 rolling acres in Halton Hills. Lovely regency Georgian style century home, country family size kitchen, sunroom & porch. Lge. barn with 28 box stalls, arena with 6 stalls, lounge & tackroom. Year round fed pond & artesian well. By appointment only Ed Proveau 826-9218.



TOAST THE NEW YEAR IN ENNISCLARE WOODS

And all year through in this elegant English style manor situated on 2 1/2 acres & surrounded by 90 acres of wooded area. This 2 storey all brick home is now ready for your final touches. Your choice of a gorgeous "Barzotti" kitchen, fabulous light fixtures & flooring allowances will astound you. Call for your own personal inspection. Joyce Hagevik/Sandra Logie 878-8101 or 826-9218.



HAVE YOU HEARD THE NEWS? \$199,000.

In law suite or teenagers own space. Lge. 2 storey, 4 bdrm. home with finished basement. Lge. private yard that backs onto park & school. Family size kitchen with walkout to patio. Mature trees in fine residential area. Ed Proveau 878-8101.



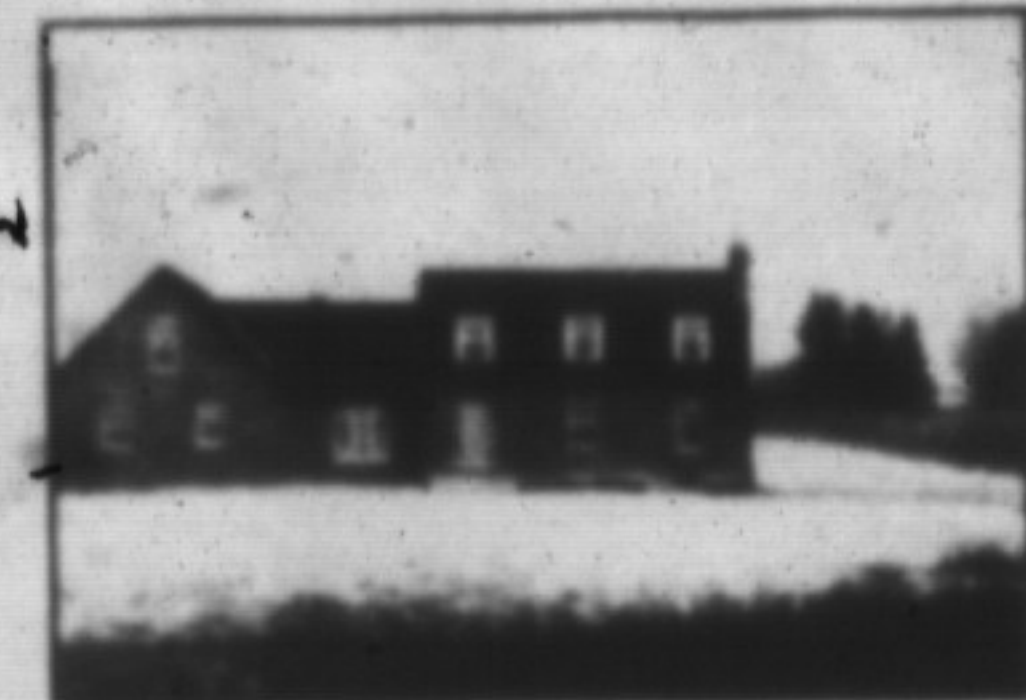
BRICK BUNGALOW WITH APARTMENT

Situated on a 60' lot, this quality-built home has three bedrooms, eat-in kitchen & L-shaped living & dining room on main level. Earn extra income with one bedroom apt. \$189,900. Call Jean Thomson, 878-8107.



IMPROVE YOUR LOT IN LIFE

Lovely 4 bedroom backsplit situated on a large lot in Timberlea. Huge family room with fireplace, walkout from spacious kitchen, central air, double garage. Available immediately. \$234,500. Jean Thomson 878-8101.



LOOKING FOR BRAND NEW

4 bdrm. 2 storey home set on lovely 2 acre lot awaits you, minutes from 401. Approx. 2300 sq. ft. with still enough time to make some decisions. Asking \$369,000. Denzil Lawrence 878-8101 or 826-9218.



THE RIGHT CHOICE \$176,900.

For the growing family. This immaculate 4 bedroom home features 1 1/2 baths, fireplace, bright greenhouse kitchen, main floor laundry room, large rec. room and single car garage. For info. call Barbara Crowe 878-8101.



CLASSIC NEW ENGLAND ON 2 AC.

To be built on very scenic lot with pastoral view. This atmospheric Cape Cod features traditional center hall, FP's in living room & family room. Sep. dining room, library, country kitchen, lrg. bedrms., etc. Campbellville area. Inge Winther, 878-8101.



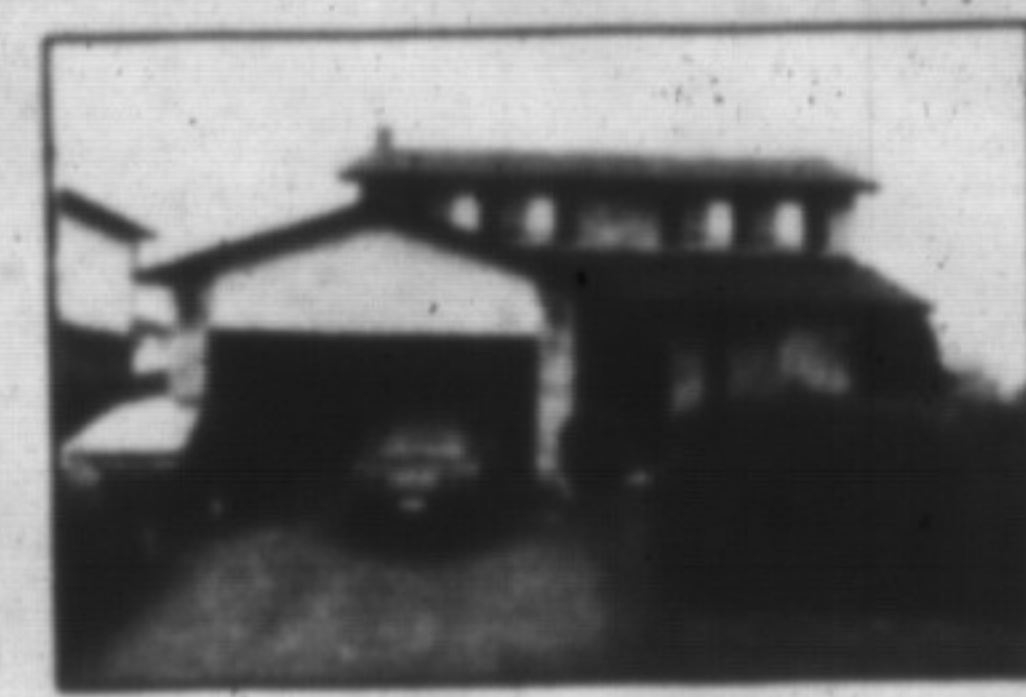
TRADITIONAL STONE MANOR

\$595,000 to be built on beautiful 2 ac. lot & nestled behind mature native trees in prestigious rural area, this 1 1/2 storey with its stone exterior, cedar roof & massive chimneys will feature 3800 sq. ft. of traditional living. Purchasers choice of interior. Inge Winther 878-8101.



UNIQUE OPEN CONCEPT 2 STOREY

\$495,000, architecturally designed country home nestled on breathtaking 16 wooded ac. with 2 streams & sugar maples. This one-of-a-kind home features greenhouse windows, skylights, picture windows, etc. Charming sep. guest house. Inge Winther 878-8101.



LOOK NO FURTHER \$246,900.

You can't beat a traditional 2 storey exec. home for class & comfort. This beauty features 4 bdrms., 3 baths, main flr laundry & fam. rm. plus many extras. For more information, please call Sandy Del Papa 878-8101.



A MUST TO SEE LOOK AT THIS FOR VALUE GREAT VALUE \$172,900.

This spotless 4 bdrm. backsplit features 2-4 pc. washrooms, fin. rec. rm. with airtight stove, inground pool, Florida rm., new furnace, new flooring in kit. Beautiful yard with storage shed. Call Sandy Del Papa 878-8101.



DREAM HOME

Gracious foyer has circular staircase leading to 4 large bdrms. M.B., has step-up oval tub, greenhouse kitchen allows sun to pour in all day. Bsmt. is fin. with sauna & bar. Call Sandy Kinsale.



START THE NEW YEAR RIGHT \$264,900.

This excellent 4 bed. home is just right for the growing family. Family room, spacious liv. & din. rm. with ensuite bath & walk-in closet in master. Professionally landscaped front & back. Isabell Hoskins 878-8101, home 854-2131.

COMMERCIAL STORES FOR LEASE
Approx. 1000 sq. ft. in each store zoned C-1. Good location. Please call Denzil Lawrence 878-8101.

A VANISHING BREED
A 96+ acre farm situated between Milton & Georgetown. Complete with 3 storey dwelling, frame shed, metal shed, barn. Two road frontages, great water supply, ideal for investment \$1,300,000. Marg Swain 878-8101.

We at Royal LePage would like to wish you a safe, happy & healthy New Year!



**388 MAIN ST. EAST
878-8101**

**(Tor. Line) 826-9218
Toll Free 1-800-263-4176**

SECRETARIES
Gayle Ford Wendy Oleszkowicz
Wendy Girard Stephanie DeGroot
Merry McIsaac

LAMONT LEONE — Manager

Karen Irvine 876 4154	Betty Brading 878 6716
Donna Syms 878 3112	Denise Kerlake
Les Bunker 519 856 4352	Lizon 876 1735
Denzil Lawrence 878 1944	Audrea Lear
Margaret Swain 878 7687	Costigan 878 9151
Connie Reynolds 876 4480	Bill O'Neill 878 2679
Ed Proveau 876 1707	Sandi Kinsale 878 0392
Joyce Hagevik 876 1084	Sandy Del Papa 878 5229
Isabell Hoskins 854 2131	Doug Butson 878 2054
Inge Winther 853 1990	Barbara Crowe 878 7825
Norma Proveau 876 1707	Sandra Logie 878 1881
	Jean Thomson 878 0767

It's you that counts the most.

Royal LePage Real Estate Services Ltd., Realtor