

Dateline

Dateline is a free listing of coming events on its available to local community groups to assist in promoting their future events. Only charitable or non-profit community groups may use this service. We can only guarantee the issue of publicity closest to the date of the occurrence although multiple insertions are possible at other second issues.

Notices for Dateline should be written and handed in at the office of The Champion, 19 Main St. E. or mailed to: Post Box 888, Milton L4T 4N3. The final deadline is Friday at 3 p.m. for Wednesday's edition and Tuesday at 3 p.m. for Friday's edition. No items for Dateline will be accepted by telephone.

Wednesday Dec. 14

Mothers interested in information about breastfeeding are welcomed to attend the next meeting of LA

LECHE LEAGUE. It'll be held at 8 p.m. at 511 Beaver Ct. Call 878-4803 for further information.

Hugh Foster Hall will be the location for a **CHRISTMAS CAROL SING AT NOON.** Coffee is served at 11:45 a.m. and the music begins at noon. Cost is \$3 for adults and \$2 for seniors and students. The hall is located at Victoria Square next to town hall.

MILTON SENIOR CITIZENS' CLUB will hold its annual Christmas Pot Luck Dinner at the Senior Citizens' Recreation Centre on Charles St. at 12:30 p.m. There will be an exchange of gifts.

MILTON LADIES COFFEE HOUR will feature Christmas floral arrangements by Christine Bonehill, of the Old Creamery, Cut 'N Dried, Milton in the main auditorium of Halton Centennial Manor, from

9:30-11 a.m. The guest speaker is Peg Brown. Free admission, babysitting provided.

Thursday Dec. 15

A **CHRISTMAS PARTY** will be held at the Senior Citizens' Recreation Centre (Legion hall, Charles St.) at 1:30 p.m. Everyone 55 years of age and older is welcomed. Dance presentations by Linedancers Square Dancers and Cloggers. Refreshments and Christmas cookies served. Choir will lead a carol sing. Bring a gift worth \$2 or more. Call Robin McPhail at 875-1681 for more information.

Saturday Dec. 31

KNIGHTS OF COLUMBUS are sponsoring a New Year's Eve gala dinner and dance in Holy Rosary

School's gymnasium. Cocktail hour at 6:30 p.m., roast beef buffet dinner at 7:30 p.m. and dancing until 1 a.m. Champagne at midnight. Tickets are \$70 per couple which includes food and beverage. Call 878-5637 from 6-9 p.m. for tickets.

Tuesday Jan. 3

ALZHEIMER SOCIETY FOR HALTON-WENTWORTH will hold a series of seven consecutive weekly sessions on Tuesday evenings from 7:30-9:30 p.m. at the Resource Centre, 875 Main St. W., Lower Mall, Unit 6, Hamilton, entrance below Chaps Restaurant. The series will discuss the medical aspects of the disease, an overview of family caregiving, support services, long term care, and legal and financial concerns. Register by phone at

1-529-7030. Limited to 20 participants.

Tuesday Jan. 10

HALTON REGION HEALTH DEPARTMENT holds immunization clinics on the first Wednesday of every month in Burlington (at 460 Brant Street) and the second Tuesday of each month alternating between Georgetown (93 Main St. S.) and Milton (251 Main St.). All clinics run from 3:30-7 p.m. For an appointment, call 878-7261.

Omagh

with ELLA PATTERSON

Gladys Marshall surprised with special party

A pleasant afternoon was spent on Sunday when a surprise birthday party for Gladys Marshall was held at the home of her grand-daughter Eileen and Dick Vanderdeen.

Guests included her late husband's brothers and their wives, eight grandchildren and their spouses. Also five great grandchildren and a niece, Mr. and Mrs. Anderson and close friends.

The party was arranged by her son, Mr. and Mrs. Colin Marshall of Stratford, and daughter Mr. and Mrs. Alan Rae of Toronto.

Mrs. Marshall, as is her custom, worshipped at the morning service at Omagh Presbyterian Church, was out for lunch and later received her many guests wearing an attractive gown with a pretty corsage.

Guests were treated to birthday cake and other goodies. Mrs. Marshall will celebrate her 90th birthday on Dec. 18. Friends extend congratulations and wish her many more happy years. Mrs. Marshall with her late husband, Robert, farmed all their married life on Fifth Line. She now resides at the Traflagar Lodge in Oakville.

The third candle of Advent was lit on Sunday at Omagh Church. Reader was Debbie Davidson. The church was decorated for Christmas and the choir rendered a special anthem with Marjorie Magee at the organ. Congregational pot-luck dinner and Christmas tree will follow service on Dec. 18.

The regular euchre party at Hornby Centre on Saturday had 10 tables in play. Winners were Evelyn Wilkie, Mary Chamberlain, Ev Presswood, Helen Ford, Bill Golden, Charles Johnson, Christine Baile, Ralph Featherstone. Lone hands were Peggy Johnson, Mary Workman, and Lorne Chamberlain with five each.

The congregational pot luck dinner and Christmas service was held at Bethel United Church on Dec. 11. The Sunday School children provided a fine program and Santa visited. Many white gifts were collected for the worthy causes.

Plan ahead

With the advent of the first major snowfall just around the corner, Milton OPP are asking motorists to plan ahead to ensure safe driving throughout the winter.

OPP say having your car properly tuned and fluid levels checked is an important step. The gas tank level should be at least half-full in cold weather to avoid gas-line freezing, resulting in stalling.

Snow tires should be used if the car is not equipped with all-season radials to alleviate slipping on snow and ice.

A kit containing an ice scraper, shovel, booster cables, flares, blankets and a first-aid kit should be stored in the trunk.

When parking, run the car back and forth to make a track which makes it easier to get out later. Allow ample space between cars.

During rough weather conditions, headlights should be on at all times, and windows kept clear of snow and ice.

Police recommend drivers involved in a skid, release the accelerator pedal and steer in the direction of the skid. Do not brake, because this will only increase the skidding action. As the car responds, straighten out the front wheels.

"GO TELL IT ON THE MOUNTAIN — THAT JESUS CHRIST IS BORN!"

The Pastor and People of The Emmanuel Baptist Church on the Heights invite you to celebrate with us the joys of Christmas at our magnificent new 95-acre escarpment campus. **The Emmanuel Family Life Centre** — 5 minutes West of Milton on Steeles to Appleby (5th Line, North 1/2 mile to last paved laneway on the West).

SUN., DEC. 18 — REV. HAROLD BRAUN

of Rotmesay, N.B.
— Church Builder — World Missions Leader
at 10:00 a.m. — Teaching the Adult Bible Class in the Hospitality Centre
at 10:45 a.m. — Preaching in the FAMILY WORSHIP HOUR
at 6:30 p.m. — CHRISTMAS IN SONG
— a concert for the enjoyment of the whole family.

Pastor: Ken Campbell

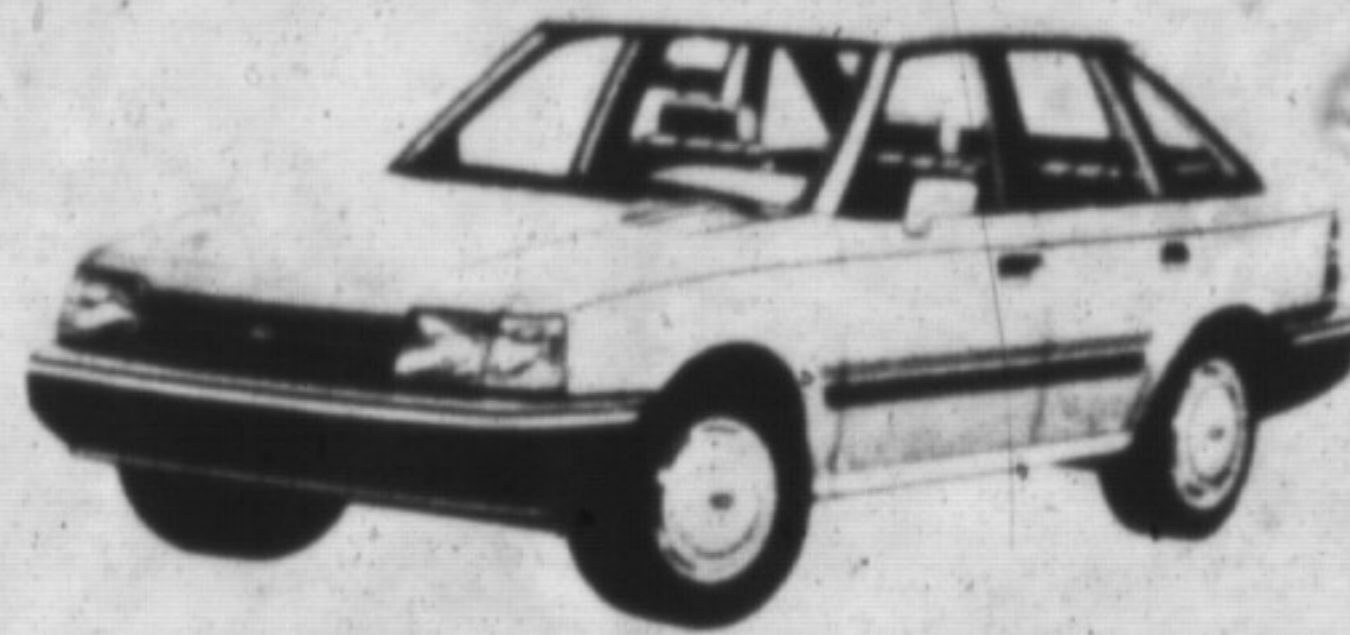
Associate: Doug Porter

Phone: 854-0300

GALLINGER RENTALS 875-FORD FOR A LIMITED TIME ONLY

\$25⁰⁰ per day*

Includes 50 FREE km/day



1989 ESCORT LX 4-DR.

*Plus P.S.T., Insurance, Additional km's & gas used

Canada Post Corporation

Our promise to Rural Canadians — signed, sealed and delivered

A recent independent study shows that 97% of our customers surveyed in rural areas, where retail postal services are now provided by local businesses, are fully satisfied with their postal services. Just as we promised.

Moreover, 92% are satisfied with their mail delivery, while 91% believe delivery to be as convenient or more convenient than before.

The message comes across loud and clear: an overwhelming majority of Rural Canadians surveyed believe that the post office is moving in the right direction. Furthermore, they consider that enlisting the help of local businesses helps to provide better services.

Our next step: Free lockbox service

Beginning January 3, 1989, customers who depend on lockboxes as their primary means of delivery will no longer have to pay a lockbox service fee. Charges will cease to apply for these customers when their lockboxes come up for renewal.

As part of our ongoing commitment to provide better services to you we will be mailing full details to you in the near future.

**Canada Post is in rural Canada to stay
That's a promise**

CANADA POST CORPORATION

Our commitment: better service for you.