

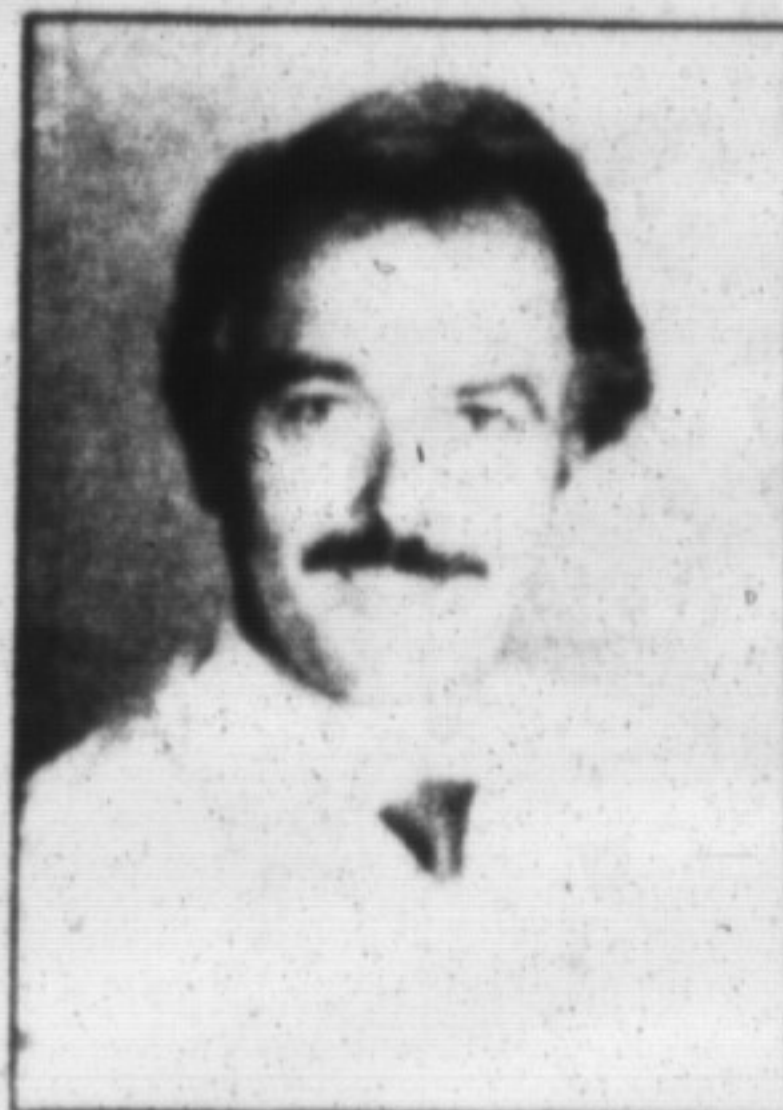


It's where you belong

We're the logical step for experienced, full-time salespeople who want more from their real estate careers • RE/MAX can change your life. • Because RE/MAX offers a superb commission split as well as all the support and services today's million-dollar producer needs to become tomorrow's multimillion dollar producer. • RE/MAX also offers you the opportunity to work with real estate's top Sales Associates. RE/MAX AGENTS lead the industry in number of transactions per agent. They call RE/MAX home. And they'll make you feel at home, too. • Because if you belong in real estate, you belong with RE/MAX. • RE/MAX Times are here.

There are more than 400 Independently owned and operated offices and 7,500 sales associates in Canada. #1 in Milton Since 1983.

**JOIN CANADA'S #1 REALTOR
CALL GARY THOMAS 878-2365
FOR CONFIDENTIAL INTERVIEW**



MAURICE MILJOUR
878-2365
876-4577



ONE OF A KIND

This all brick home is located on a park like setting with a 50 x 530 lot. There are gleaming oak floors throughout three bedrooms and large living rm. Enjoy a big eat in kitchen and relax in an 18 x 16 recreation rm with fireplace. In addition this home has the possibilities for an in-law apartment with separate entrance. New vinyl windows. Don't hesitate, contact listing agent MAURICE MILJOUR 878-2365 or 876-4577

\$199,000



EXCELLENT TOWNHOUSE

This home is loaded with extras. Three bedrooms, master with ensuite, three bathrooms, fireplace in living room, professionally finished rec rm, oak trim, mirror wall in dining room, central air conditioning, breezeway entrance, lead & crystal front door. The good ones go quickly!! \$147,500. Contact Listing agent MAURICE MILJOUR 878-2365 or 876-4577

\$147,500



MIKE MORGAN
878-2365
878-8093
826-1030
(Tor. Line)



VICTORIAN CHARM

Charm and elegance permeate this remodelled Victorian home. The formal living room, dining room, front foyer and completely restored kitchen and baths, invite elegant entertaining. Three large second floor bedrooms plus a master suite with adjoining dressing room, ensuite and whirlpool offer all the amenities of luxury living. The prestigious location, backing onto parkland, makes this a must to see. Please call Mike Morgan \$439,900



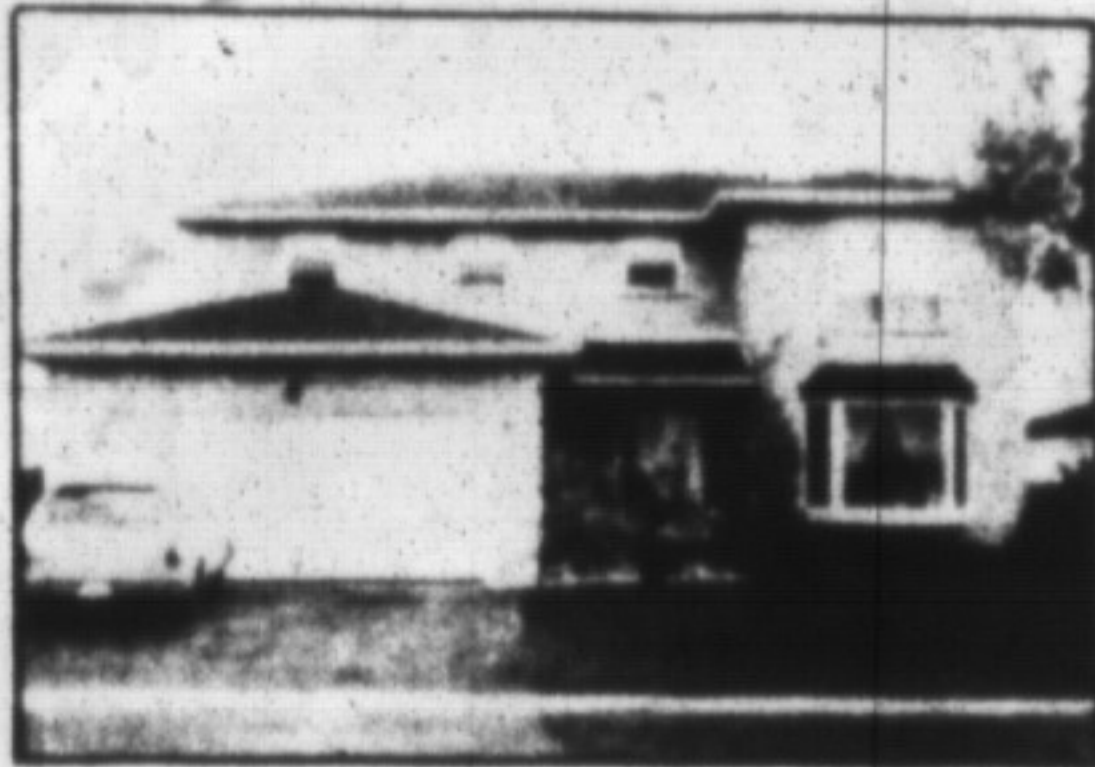
LINDSAY J. McLAREN

Office: 878-2365
Res: 854-2451
Pager: 878-2020 Pg.357
Tor. Line: 826-1030



VICTORIA ST. DISTINCTIVE CHARM AND ELEGANCE

Surround this all-brick 2 1/2 storey Victorian home in mature Milton. Full restoration with quality materials and tasteful decor give this home unique character. Separate formal LR & DR, custom oak kitchen with br appliances and adjoining sitting room, pine, oak & broadloom floors, 3 bdms, 2-car garage, huge wood deck and lighted patio. Must be seen to be appreciated. For personal viewing contact LINDSAY J. McLAREN Asking \$595,000



THIS HOME'S GOT NOTICEABILITY

Laurier built 2330 sq. ft. Main level consists of living and dining rooms, family-sized kitchen, main floor family room and laundry and 2 pce washroom. Upstairs we have 4 bedrooms, 2-4 pce baths and plenty of closet space. Basement level has finished rec room, 5th bedroom and 3 pce washroom. Discover the room you need! LINDSAY J. McLAREN Asking \$259,900



VICTORIA ST.

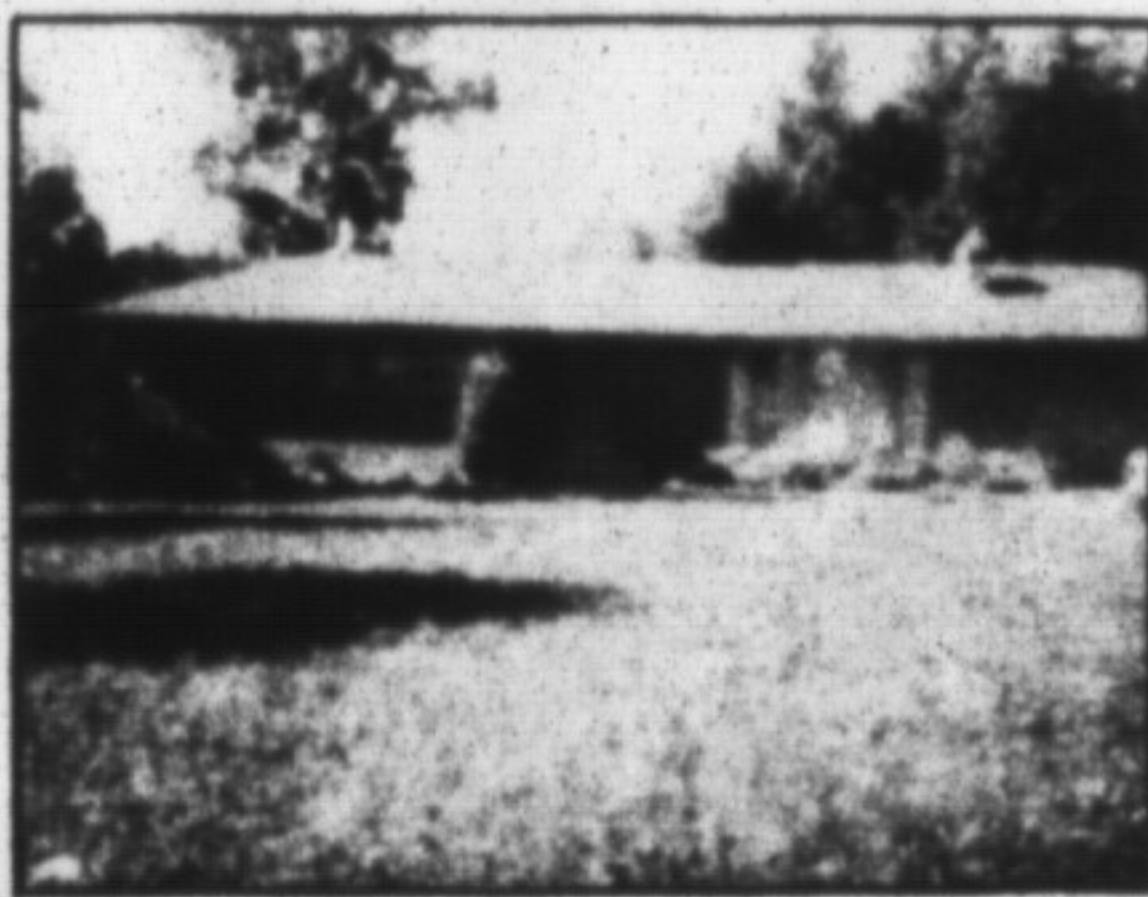
Charm and elegance permeate this remodelled Victorian home. The formal living room, dining room, front foyer and completely restored kitchen and baths, invite elegant entertaining. Three large second floor bedrooms plus a master suite with adjoining dressing room, ensuite and whirlpool offer all the amenities of luxury living. The prestigious location, backing onto parkland, makes this a must to see.

LINDSAY J. McLAREN
ASKING \$439,900



BETTY INGLE

Res. 827-4286
Office: 878-2365



YOUR NEW LIFE IN THE COUNTRY

Make the grand escape today. 4 bedroom brick ranch set on scenic 2 1/2 rolling acres. A RUNAWAY DEAL. Asking \$289,000. Call Betty



BUSY VOCATION? NICE LOCATION!

This well appointed 4 bedroom house situated on large lot in Timberlea is close to schools, shopping and has main fl. fam. room with fireplace, walkout, 3 bathrooms, central air, double car garage. Prepare for a knockout. Call Betty Ingle for more details. ASKING \$256,900.



ACROSS FROM BRUCE TRAIL

Building lot 122 x 199. Beautiful treed setting on secluded road \$114,900



Commercial space with character available for lease. Give your store some class. Call Mike for more details.