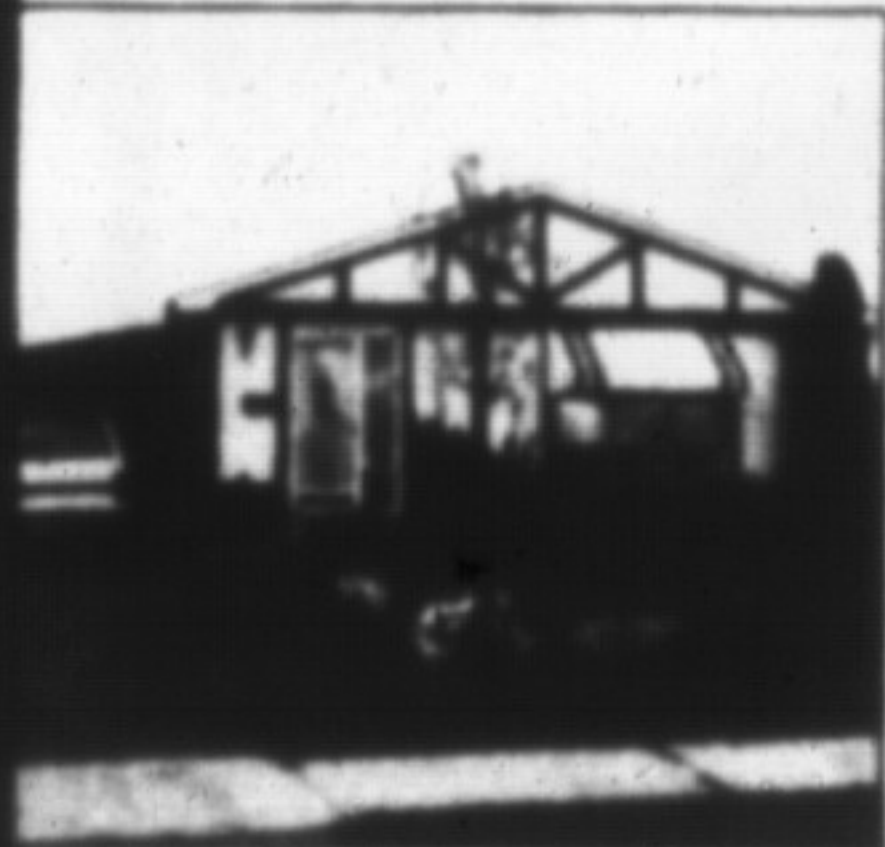




JEAN SNOWDEN

878-2365
878-3155



THE ACCENT'S ON LEISURE...

You'll love the giant rec room with woodburning stove and the private yard backing to parkland. Add 3 bedrooms, an eat-in kitchen, 4 piece & 3 piece bathrooms plus central air conditioning (remember last summer?) for a great package. Call Jean to view. \$173,500.

**NEED LISTINGS...
I'M ALMOST SOLD OUT**

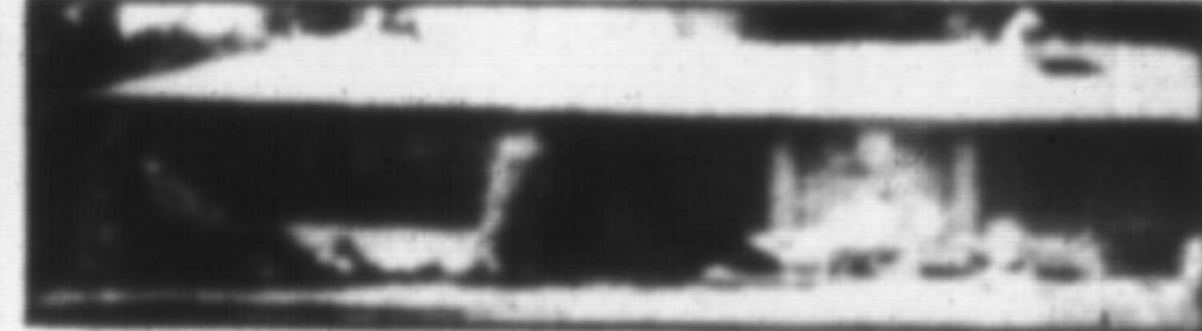
I have clients waiting to buy a townhouse, a smaller detached home in Timberlea... in fact I have purchasers for most price ranges you are thinking of selling or simply wondering what your home worth in today's market please call me for a confidential pressure-free response.



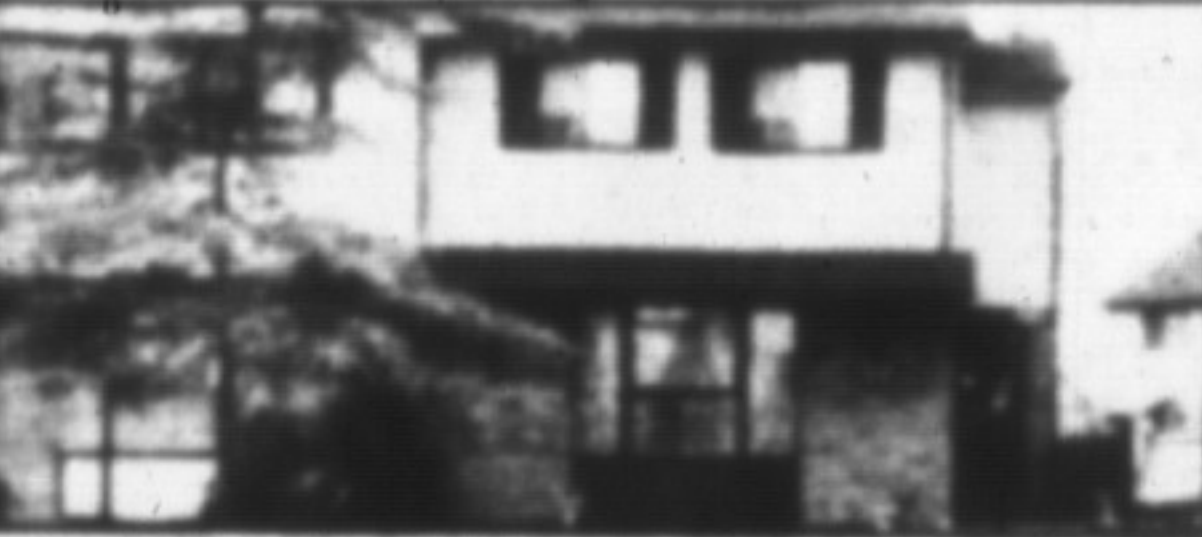
FREDA LAWRENCE
Res. 878-4860



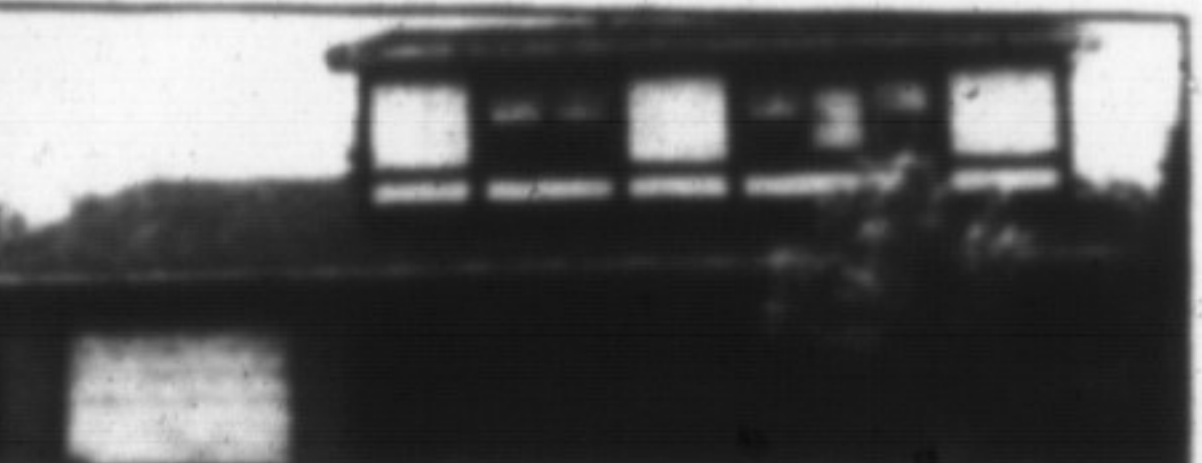
BETTY INGLE
Res. 827-4286
878-2365
TOR. LINE 826-1030



NATURE'S NEIGHBOUR
Plenty of blossoms & greenery go with 4 bedroom brick ranch set on scenic 2 1/2 rolling acres. Why wish & wait call today! Asking \$289,000. Call Betty or Freda.

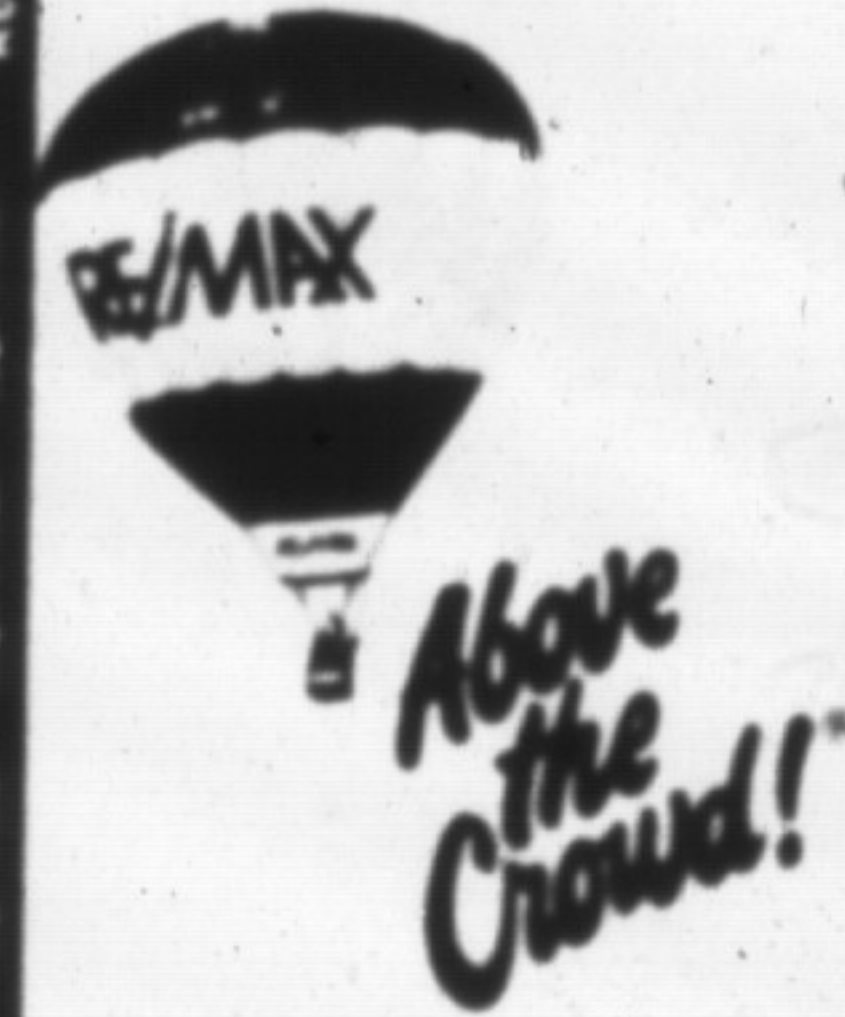


NEAT OWNER'S DELIGHT
Call now to see what value is all about in this delightful semi detached in Timberlea. 3 bedrooms, 1 1/2 baths, finished basement, central air, electronic air cleaner. \$159,900. Call Betty or Freda.



A TALE OF TWO STOREYS
See this 2 storey super soon! Dorset Park 4 bdrms, 1 1/2 baths, new kitchen cupboards, spotless home. Good sized lot. Call Freda.

ANNOUNCEMENT



Gary Thomas, president of Re/Max Mil-towne Realty Corporation is pleased to announce that BETTY BRADING has joined Re/Max's winning team of professional realtors.

With over 15 years experience in the Real Estate field we know that Betty has the knowledge and ability to serve your Real Estate needs well.

If you would like a competent self starting professional working for you, please give Betty a call:

OFFICE: 878-2365
RES: 878-6716

RE/MAX[®] miltowne
realty
corp.



Call The Warners for your
Town and Country Connection



878-2365
878-1084
TOR. LINE 826-1030

Don't Miss Out

on this perfect family home in Timberlea. Featuring 3 bedrooms, 2 full baths, bright eat-in kitchen, family room with fireplace. Priced at \$214,900.



WANT TO BUILD?

We have an exclusive building lot consisting of 1 full acre. Very close to town. Priced at \$154,900.

CLAYTON HACKENBROOK

OFFICE
878-2365
RES
875-0771

24 Hr. Pager
878-2020
Car Phone



COUNTRY LIVING IN A NEW HOME

You will be the 1st occupants in this custom built home on 1/2 acre. This beautiful home features 2 x 6 construction, double garage, with extra energy efficient features throughout. This bungalow has been well planned with main floor family and laundry room, extra large country kitchen, 2 full bathrooms, one with a whirlpool tub and plenty of closets and storage. Plus an energy efficient gas furnace. I could tell you more, but it would be best to see it with Clayton Hackenbrook. \$220,000.

OFFICE SPACE FOR LEASE

420 sq. ft. Asking \$350/month. Utilities included.

...hope you've noticed that I've been selling my listings. For help in all your real estate needs, call me at my office or residence.

...urgently need a townhouse for a purchaser with a Jan. 28th closing. A garage is not necessary.

GAIL PULLEN
878-2365
878-0110



3 bedroom townhouse in Dorset Park. Kids are just across road from public & separate schools. Priced to sell. Call Gail Pullen, 878-2365.

Show a sign of success

