

**BUILDING LOT  
\$119,900  
3 KM WEST OF  
GEORGETOWN**

170 x 220 ft. (.85 acres) well, culvert on property, gas & Hydro on road, ready to build.

**A. SASEK 624-1515  
CENTURY 21  
KINGSBURY**



Stella Parton, R.E.

(416) 878-7470

**BUILDING LOT  
CAMPBELLVILLE AREA  
2 acres - partly treed - very scenic - small shed on property, \$139,900.**

**PLUS!**  
2 acres building lot, artesian pond, very scenic, \$175,000. Call for more information.

**FURLONG, COLLINS  
MANDERSON & GUNDING  
BARRISTERS & SOLICITORS**

at 17 Wilson Dr.

Corner of Main & Wilson  
Milton, Ontario

878-8123 or 878-8129

HOURS: Mon-Fri 9:30 am-6 pm  
Evenings & Sat. by Appointment

**Real  
Estate**

**MENTAL  
HEALTH  
KEEP IT  
IN MIND**



**SKS Financial Group**

- 1st, 2nd, 3rd Mortgages arranged
- Residential, Commercial, Industrial
- Construction — Financing
- Commercial Leasing

Poor Credit — Debt Consolidation  
— Private Funds Available —  
— Fast Commitments —

**CALL TOLL FREE**

1-553-1875 24 hrs.  
(416) 490-8984  
**IN HOME SERVICE**

**STONE BARN ESTATES**



COBBLESTONE PLACE, ROCKWOOD

W. H. BOSEY & CO. LTD. REALTOR



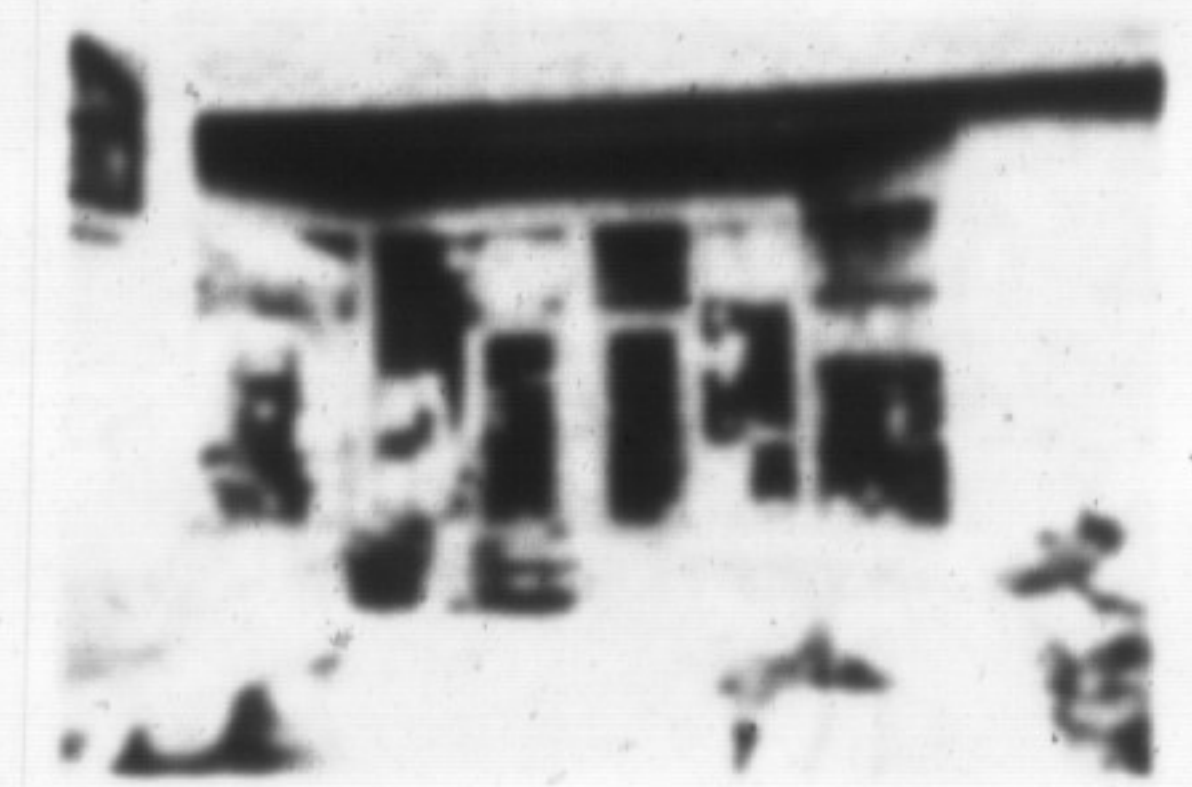
**GIVE  
THE  
CHILDREN  
A  
TOMORROW  
For  
UNICEF  
cards and gifts  
1-800-268-6364  
233 Eglinton Avenue East  
Toronto, Ontario M4P 1L7  
Unicef Ontario**

**LOT FOR SALE**

Steeles & Trafalgar Rd. Close access to 401 Highway. Half acre lot 125 feet x 176 feet.

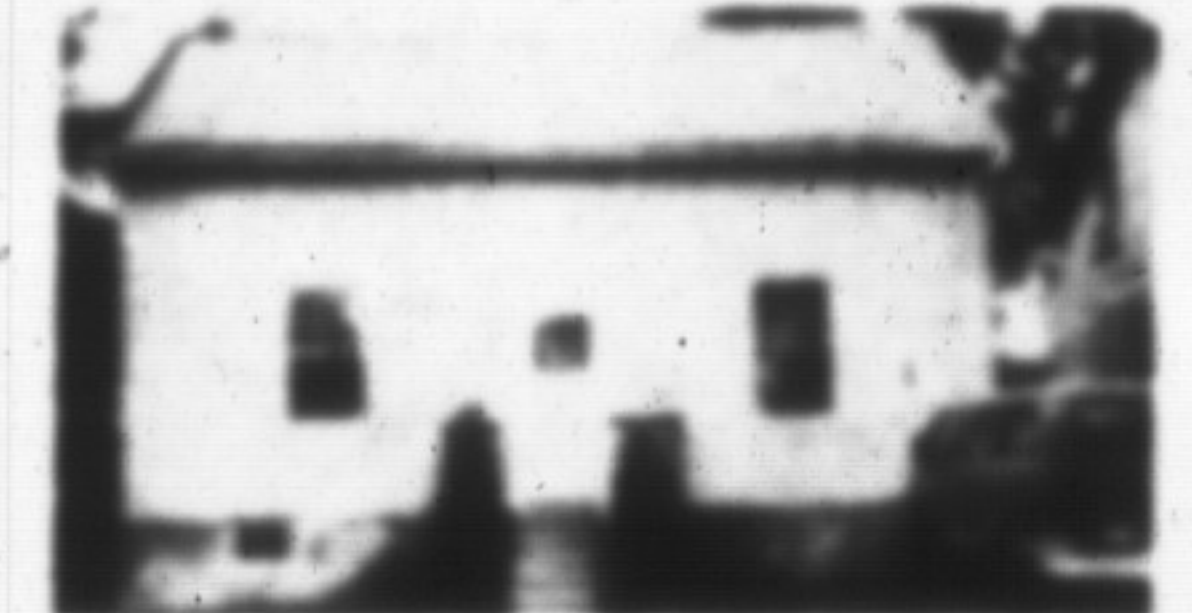
\$155,000

**Bruno Curilli  
Belstar Realty Ltd.  
890-5900**



**A TURN-KEY OPERATION IN  
ELORA**

For a business that will be profitable from "TAKING OVER" is this Canadiana Shop in the MEWS! It is established as a Canadiana-made gift and accessories in this choice location — all inclusive are the fixtures (some antique) and can be shown any time. For further information from Kay Maxwell.



**CAN YOU FIND BETTER AT  
\$89,900?**

This semi detached home in Guelph had board & batten installed 2 weeks ago, and a new deck off the main kitchen & a fully enclosed backyard with privacy fencing. There are 2 bedrooms & the master is 13 x 17 with walk-in closet. Better see this one today.



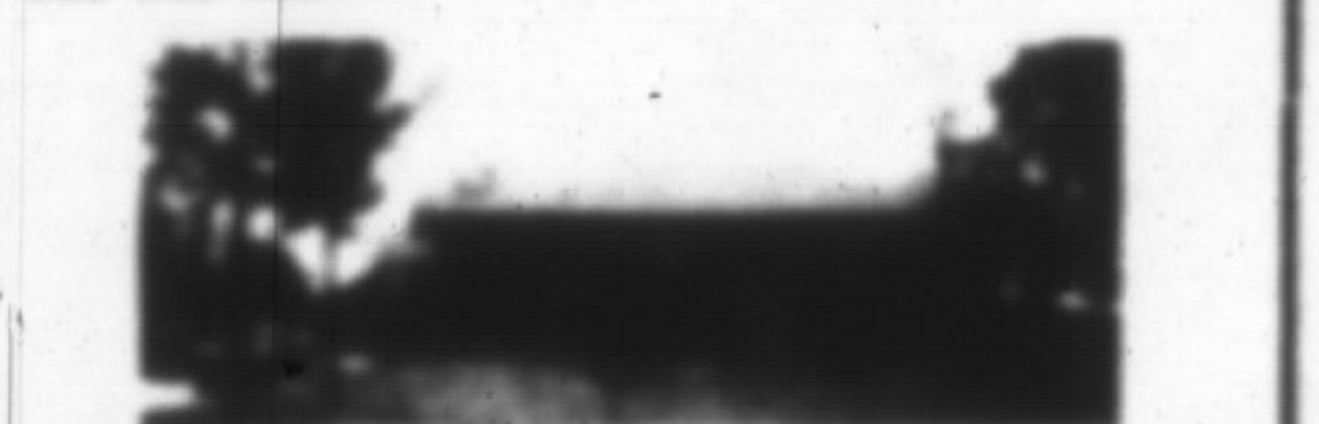
**GREAT INVESTMENT**

2 separate homes on 1 ac. Each is newly refurbished. One is open concept with 2 bedrooms, the other is 2 bedrooms plus 1 in lower level with finished rec room. Paved parking for approx. 7 cars. Newly landscaped. Both with early possession. See Heather Ashbee & Rockwood with highway location.



**BAKERY WITH LIVING  
QUARTERS**

Actor's busy bakery. The reputation of this business is exceeded only by the profits. There is 2670 sq. ft. in the building, and the majority of the fixtures are less than 5 years old. The living area on the second floor has been newly renovated with windows, carpeting, insulation, and is spacious. Owner is retiring and can give early possession. Business, brick building and fixtures are all included. Call me for complete information. KAY MAXWELL 822-8631.



**3.44 ACRES IN HILLSBURGH**

20 minutes to Guelph, 15 minutes to Georgetown. This all-brick bungalow has main floor laundry room. Finished 20' x 10' rec room with Francon & expanded room. House is in excellent condition. A steel garage/workshop is 30' x 24' and could hold and help in packing a big rig. See it anytime.

For information on any of the above, please call Kay Maxwell, representing T.T. Skov Real Estates Ltd. (519) 822-8631.

**Campbellville Realty**



INC.  
90 MAIN ST. N.  
CAMPBELLVILLE, ONT. **854-2777**

TO SERVE YOU BETTER

We are members of the Oakville, Milton & Dist. and the Guelph & Dist. MLS Boards.



**SYLVIA BURSEY  
BROKER/OWNER**

**ATTENTION  
R.E. SALESPEOPLE**

We have openings for two full time, country-oriented sales people. We offer quiet, pleasant working atmosphere, a very attractive comm. split, excellent location attracting heavy walk-in traffic.

Take advantage of this lucrative opportunity, call Sylvia Bursey at 854-2777 for confidential interview.

**ATTENTION  
PROPERTY OWNERS**

We have purchasers for the following properties:

- Building lots 2-5 acres
- Large acreage and farms
- Open concept family home up to \$400,000
- Country starters or retirement homes up to \$275,000.

If your property matches any of the above and you intend to sell in the near future please give us a call.



**HEATHER ASHBEЕ  
SALES REP.  
878-5624**



**COUNTRY MEADOWS  
\$398,000**

4 bdrm., 2900 sq. ft. executive home, situated on 2 acres with view. Featuring main floor dining room, oak staircase, skylight, large family kit., upgraded throughout. For more details and appoint. to view please call Heather or Sylvia.



**TIMBERLEA**

3 bedroom all brick bungalow. Large Hollywood style kitchen, walk-out, open staircase to lower level, formal living & dining rooms. Huge partially finished basement with brick fireplace, quick possession. Asking \$179,900. Call Heather or Sylvia for viewing appt.