

Four seeking single separate board seat

There's a four-way race for the separate school trustee position in Ward 2.

Vince Botticella, Rex Sutcliffe, Mary Louise Loughlin, and Ray Stephenson are vying for the spot vacated by the retirement of long-time trustee Angelo Tonelli.

Mr. Botticella, 40, an elementary school teacher for the Dufferin-Peel Separate Board, and father of three, has no political experience.

If elected he wants to ensure that all alcohol spirit duplicators, old-style copying machines, are banished from use. He says the fumes are harmful.

He is also concerned the Halton Separate School Board allows parents to transport students in their cars on class excursions. He questions the safety and is worried about the lack of insurance coverage.

He would like to see more students bused during excursions.

He is also interested in starting a junior kindergarten program, and reducing the number of possible school fund-raising projects from six to one.

Mary Louise Loughlin, 42, has been a resident of Milton for the past 10 years.

Mrs. Loughlin, a registered nurse, has several years of community and school involvement. She served as president of the St. Peter's Parents Group, and has been a member for the past four years of the Special Education Advisory Committee.

She has been a director on the board of the North Halton Association for the Developmentally Handicapped for the past four years and a member on the steering committee for Children's Mental Health Study and Halton District Health Council.

Harrison challenged as public board trustee

Only in Ward 2 will there be any competition for the position of public school board trustee.

In that ward, Jennifer Willoughby, a 31-year-old mother, has challenged incumbent Bill Harrison.

In Wards 1 & 3, Bob Clarke has won the seat by acclamation.

While Mr. Harrison, a teacher for the past 24 years, has six years of Halton School Board experience to draw on, Mrs. Willoughby is counting on the fact that she will be available during the day as a factor in winning the election.

She wants to ensure the constituents in Ward 2 are aware of what is happening in Milton schools and in the school board.

ELECTION '88 X

Deciding Milton's future

She served as social director of the Milton Springers Gymnastic Club and a volunteer at Tinkerbell Nursery School.

She is committed to ensuring her children, and Milton children, receive a sound education. She would like to see increased communication between the board and ratepayers, better parent/teacher ratios and better programming for children, and better communication between the Board and ratepayers.

Ray Stephenson, a Milton resident for the past 12 years, has entered the race to ensure the educational needs of his children are improved.

Mr. Stephenson has two children in the separate school board system. His daughter is a student at Bishop Reding High School, his son attends Holy Rosary.

He is a graduate of DeVry Technical Institute. He also attended Ryerson Polytechnical Institute and is currently enrolled in Wilfrid Laurier University. He formerly operated Alternative Natural Foods in Milton and is the owner/manager of Thrifty Car Rental in Oakville.

Rex Sutcliffe is the fourth contender in Ward Two race.

He has been a member of Holy Rosary Parish for the past 10 years and has both his B.Sc. and B.A.

He is an airline captain, has worked as a supply teacher and has four children in the separate school system.

Mr. Sutcliffe is a supporter of traditional curriculum and academic excellence. He wants to maintain a strong Catholic atmosphere in the schools.

ELECTION '88 X

Deciding Milton's future

Mrs. Willoughby lives on the Town Line with her husband Andrew and their two young children.

She has a B.A. in political science from Wilfrid Laurier University and went to public and elementary school in Burlington.

She currently operates a private home daycare under Cherish Parent-Child Centre and is a member of the Scotch Block Square Dancers. She has been a resident of Milton for the past eight years.

"I have decided to run because I

See HARRISON page 9

"MAKE YOUR X COUNT"

YOUR X Provides a strong, responsible, common sense and cost-effective approach to all issues affecting you at Milton and Halton Councils; and now, through our municipal association, directly to the Government of Ontario.

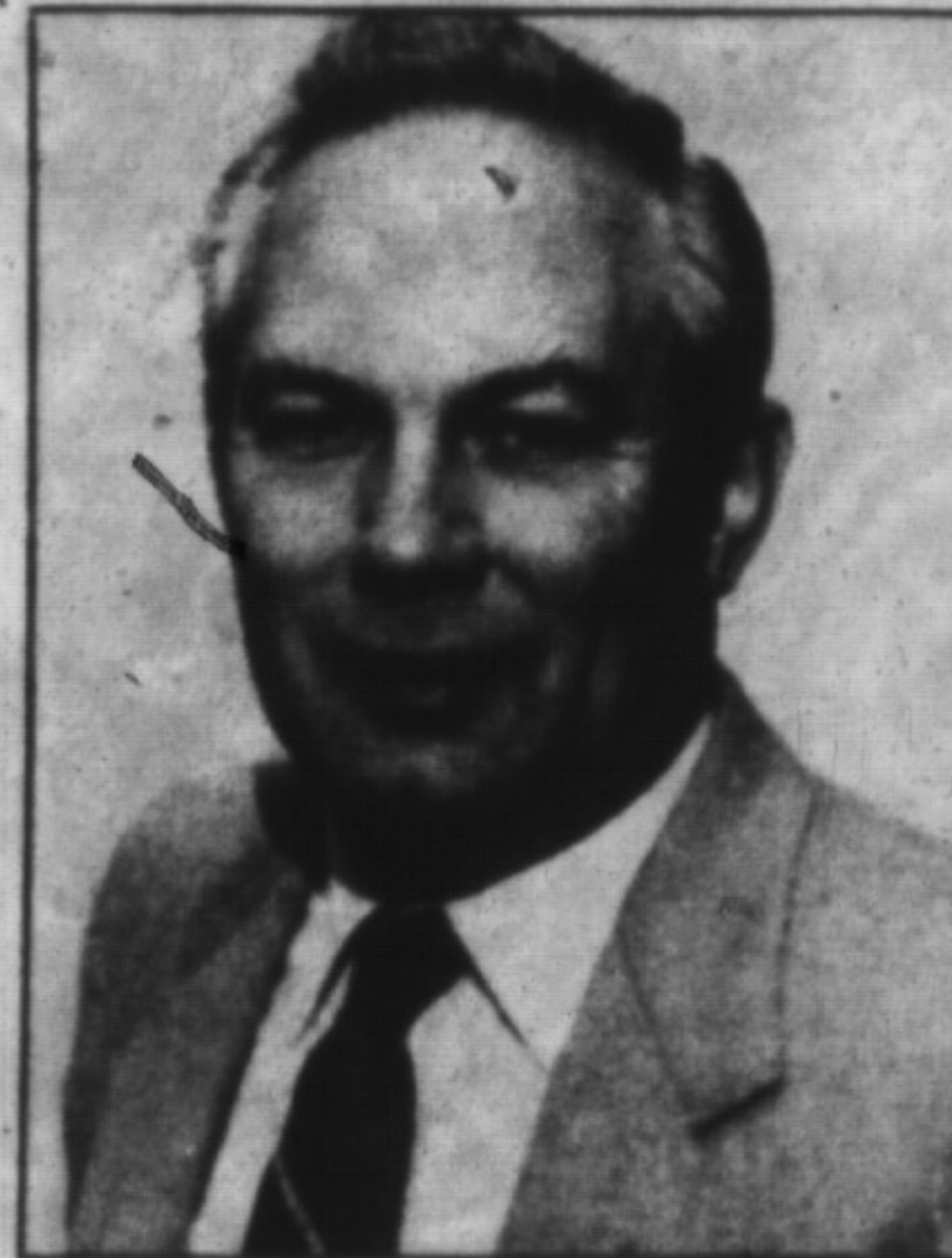
RE-ELECT

COUNCILLOR FOR THE REGION AND THE TOWN

Brad CLEMENTS X

URBAN WARD 2 MILTON

FOR MORE INFORMATION OR ASSISTANCE CALL ME AT 878-6576



Here to Stay! "Push, Pull or DRAG"

\$1155

MINIMUM TRADE-IN ALLOWANCE

Limited Time Offer!

ON ANY VEHICLE YOU CAN PUSH, PULL OR DRAG TO OUR DEALERSHIP!

Valid on any new or used vehicle in stock



Stk. No. H254 '88 Civic LX Sedan Loaded Was \$18,836	Stk. No. H415 '88 Civic 4 Wd. Wagon Was \$18,554	Stk. No. H364 '88 Accord Exi Sedan Loaded Was \$23,283
Stk. No. H308 '88 Prelude Si 4 Ws. Fully Loaded Was \$27,093	Stk. No. H362 Demos '88 Prelude Si Was \$23,338	Stk. No. H410 '88 Accord Exi Coupe Loaded Was \$20,939
Stk. No. H373 '88 Accord LX Was \$17,675	'84 Pontiac Phoenix List \$5,010 plus licencing \$55 down \$199.99 36 month Extended warranty available	Stk. No. H354 '84 Ford Tempo List \$6,299 \$55 down \$258.00 36 month Extended warranty available

HOURS: MON.—THURS., 9 A.M.—9 P.M.
FRI.—SAT. 9 A.M.—5 P.M.

IF YOU THINK SOMETHING IS MORE IMPORTANT THAN A CUSTOMER

... THINK AGAIN

"Our aim is to assure our customers that our promise is your guarantee from price quotes that are sold to service that's award winning we'll provide you with the finest attention to detail."

You Can't Beat That

Peter Duffus
President, Milton Honda



Prices include Lifetime Rust & Paint Pkg. Freight and Pre-Delivery Inspection and 5-Year Unlimited Mileage Warranty 60-month Bank Financing Available

AT MILTON HONDA, OUR PHILOSOPHY IS SIMPLE...
WHEN YOU'RE HAPPY, WE'RE HAPPY!

876-4748

310 STEELES AVE., MILTON

MILTON HONDA

Goliger's Travel

SINCE 1955

Operated by 789408 Ontario Ltd.

Now Open

5% OFF All*
Vacation Packages, When
You Present This Ad

- *One coupon per family
- *Not applicable for airline tickets
- *Offer valid to Dec. 31st, 1988

(Outside Sales Reps Wanted)

Registration 2939813

HOURS: Mon.-Thurs. 9-6
Fri. 9-9 Sat. 10-4

Dorset Park Plaza
468 Steeles Ave. E.
Milton Ontario

878-5888