

Great News

Mattwood Presents Three exciting plans designed exclusively for Walker's Heights Burlington... Fall possession

When you're looking for that special home to meet your family's needs, it's important to consider location, price and a qualified, proven builder!

Walker's Heights is a fast-growing community, and to enhance its character, Mattwood Homes introduces The Cape Cod, The English Manor, The French Country!

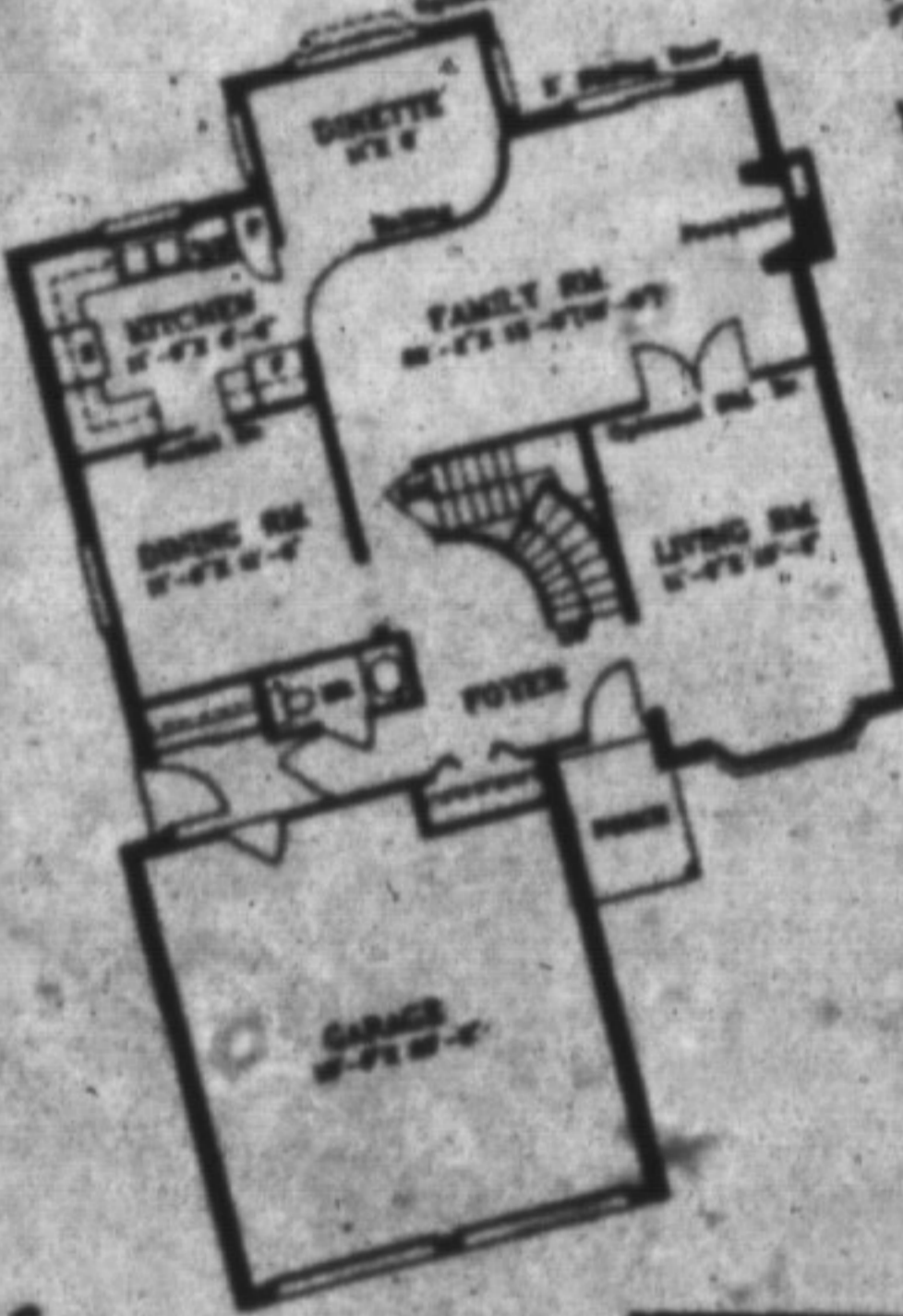
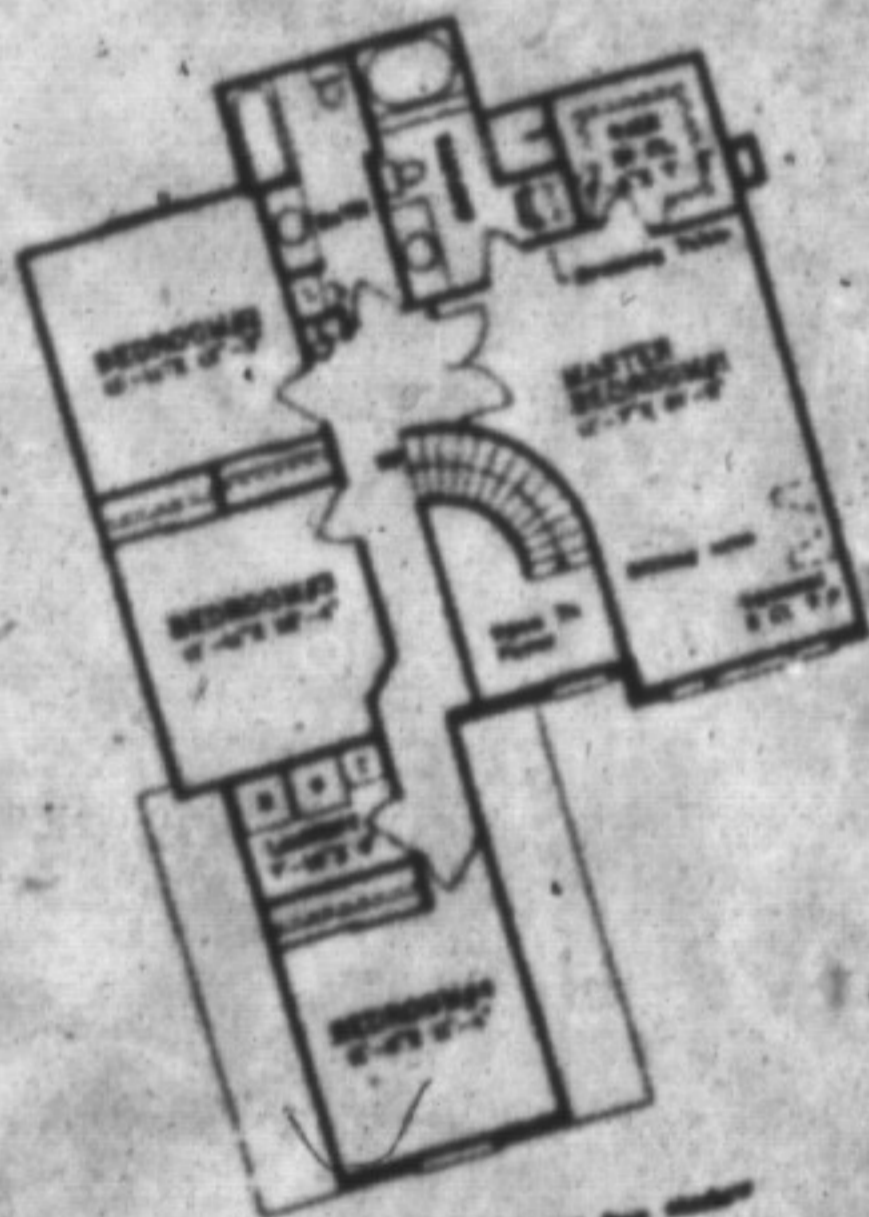
Each offers the versatility of mix and match designs — a selection of two main floors, each with a "greenhouse style" dinette & spacious family room plus a choice of three upper levels featuring 3 & 4 bedrooms.

With a "Mattwood Home", you can afford to build a better future by building equity in your lovely new home!

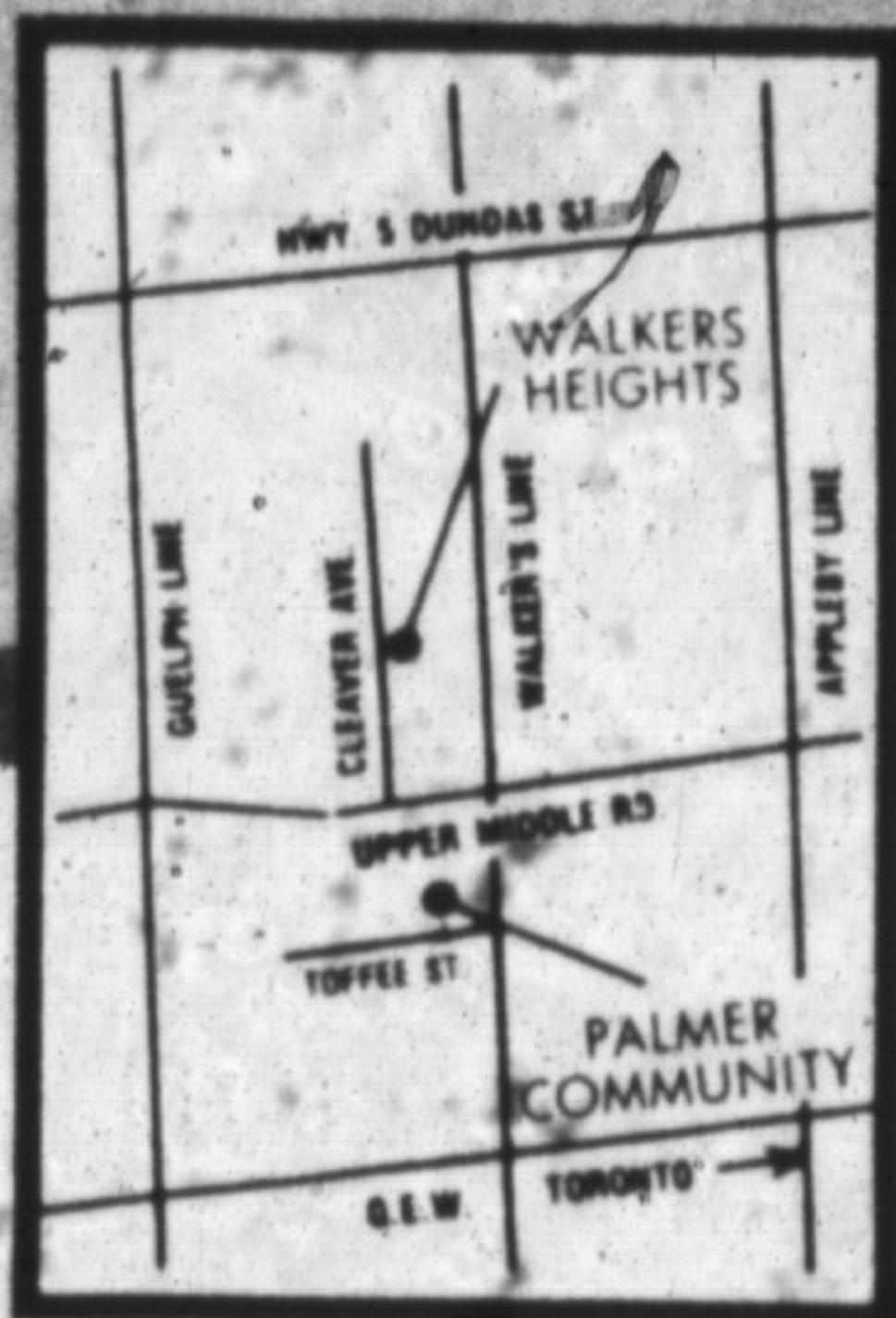
THE FRENCH COUNTRY
2,435 sq. ft.



THE CAPE COD
2,188 sq. ft.



from
\$219,900



... and in The Palmer Community



ERIE II
approx. 1,700 sq. ft.



SUPERIOR II
approx. 1,700 sq. ft.

Only six homes
remaining...

August/September possession
from \$166,900

Artist's Concepts

SALES OFFICE OPEN
Mon. to Thurs. 2-8 p.m.
Weekends 11-5 p.m. or by appointment

MERLE BAIRD-KÉRR/DOREEN COUGHLIN

Sales Representatives, Montreal Trust, Realtor. Tel. 634-7722 or 844-8252 Oakville

MATTWOOD HOMES

Burlington's builder of fine homes since 1958



Tel. 639-1324 (Call collect if out-of-town)