

Brick plant on hold

from BRICK page 1

We prefer to get those things on the table now. This is the time to deal with all those things. I for one would very much like to hear answers."

Ian Thompson, a residents' spokesman, said there were three primary concerns for homeowners. They are worried about nuisance factors, such as noise and night operations, environmental impacts, and about the proposed quarry expansion, which they firmly oppose.

Mr. Thompson said the Monday resolutions pleasantly surprised him in that they were "more than we expected. The whole process has been kind of amorphous. It's nice to have some clear statements being made."

Asked if he found Canada Brick's attitude co-operative, he replied,

"not yet. I think they'll have to start paying attention to us."

Councillor Bill Johnson warned residents that he doesn't think Canada Brick or anyone else extracting rock from the escarpment has to listen overly much.

"I'd hate to give these people false hopes," he said. "I hope they realize the political reality."

Mr. Johnson has advocated taking the plant as is and getting some concessions from the company for town-operated recreational fields or some such trade-off. He believes that the provincial government could order the plant to proceed because it would be deemed in the provincial interest.

Mr. Johnson said the powerful extraction industry lobby made them "a law unto themselves."

Donald May, a consultant retained by Canada Brick, said the

company's site plan still "has to be fine-tuned." A proposal for quarry expansion may not be ready for six months, he added.

Don't Wind Up in the Drink

Going for a swim when your head's already swimming is an open invitation to trouble. Water sports and alcohol just don't mix. So before you dive in, be sure you haven't been in the drink. The message is quite simple — leave the alcohol behind.

The Canadian Red Cross Society +



MEDIUM
GROUND BEEF

\$1.48 /lb

BREAKFAST SAUSAGE

99¢ /lb. or **\$2.18** /kg

BONELESS
PORK CHOPS
(BUTTERFLY)

\$2.99 /lb or **\$6.58** /kg

BONELESS INSIDE ROUND STEAKS

\$2.99 /lb or **\$6.59** /kg

BONELESS SIRLOIN TIP ROASTS

\$2.99 /lb or **\$6.59** /kg

BLACK FOREST HAM

\$3.99 /lb.

GENOVA SALAMI

\$4.50 /lb

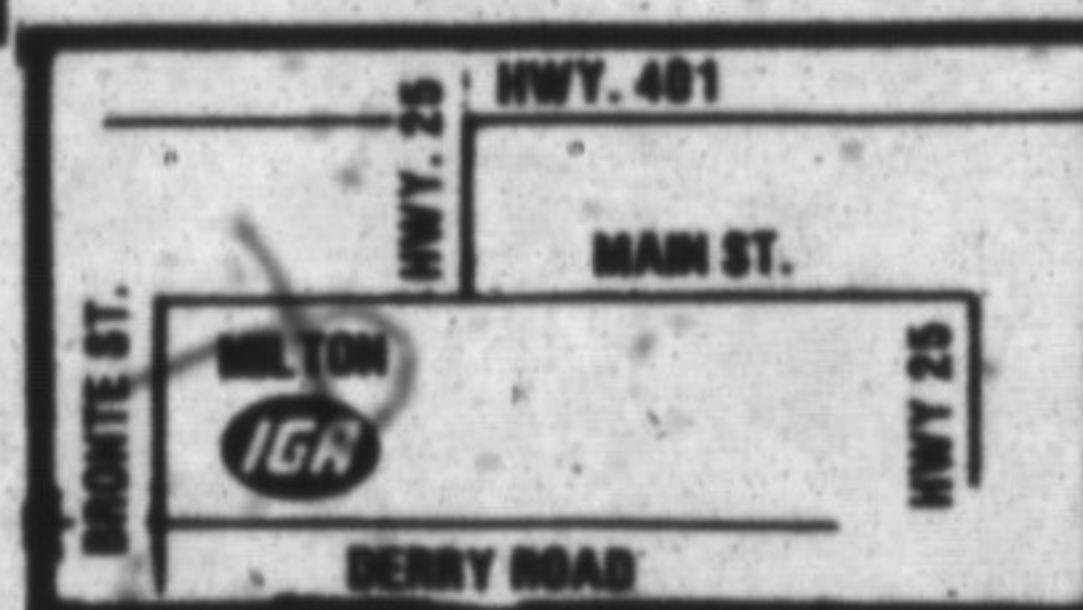
CHECK OUT OUR OTHER GREAT INSTORE SAVINGS

MILTON I.G.A.

327 BRONTE ST., MILTON

HOURS

Mon. & Tues. 9 a.m.-9 p.m.
Wed., Thurs., Fri. 9 a.m.-9 p.m.
Saturday 8:30 a.m.-6 p.m.
Sunday 10 a.m.-5 p.m.



MILTON HONDA GOES FOR IT

0% INTEREST

'87 & '88 NEW & DEMOS ONLY IN STOCK
10,000 MAXIMUM
24 MONTH TERM
BANK FINANCING



1988 HONDA ACCORD LIMITED DEMO
CA5625, Stk. No. H271, 39,348 km.
\$18,900

*10,000 MAXIMUM 24 MONTH BANK TERM FINANCING

Doing business with Milton Honda isn't complicated, it's simple: When you're happy, we are too — no ifs, ands or buts about it!

You Can't Beat That

PETER DUFFIN
President,
Milton Honda



AT MILTON HONDA,
OUR PHILOSOPHY IS SIMPLE...
WHEN YOU'RE HAPPY, WE'RE HAPPY!

876-4748

310 STEELES AVE., MILTON

HOURS: Mon.-Thurs. 9 a.m.-9 p.m.
Fri.-Sat. 9 a.m.-6 p.m.

MILTON HONDA