

It's easy to bring your lawn up to par

Dear John: Should I mow my lawn as frequently as the golf course across the street is mowed? The course has beautiful grass.

Dear Greens Gazer: Frequent mowing might be right on par for the golf course, but your lawn probably needs a different mowing schedule to make it to the green.

To have a thick, healthy lawn, cut off only one-third of the grass blade each time you mow. The height of the grass blade determines the

Dear John:

John Deere Answers Your Lawn and Garden Woes



depth of the root system, so the higher you cut from the soil, the deeper and stronger your lawn's root system will be. A lawn with a

deep root system is more tolerant to heat, drought, pests and disease. The one-third mowing rule usually means mowing about once a

week, which leaves you plenty of time to practice your golf swing or shoot 18 at the course across the street.

Dear John: My new mother-in-law says that mulching my garden is a must. Is she just trying to tell me what to do again?

Dear Badgered Bride: Your mother-in-law has a point. While you don't have to mulch, it does have its advantages.

Mulch keeps the soil moist and

cool, conserves water and also cuts down on weeds in the garden.

The easiest warm-weather mulch is known as the "dust mulch", which is simply cultivated topsoil loosened with a hand weeder. Other types of mulch include wood chips, shredded or nugget pine bark, hay, pine needles, dried grass clippings and plastic.

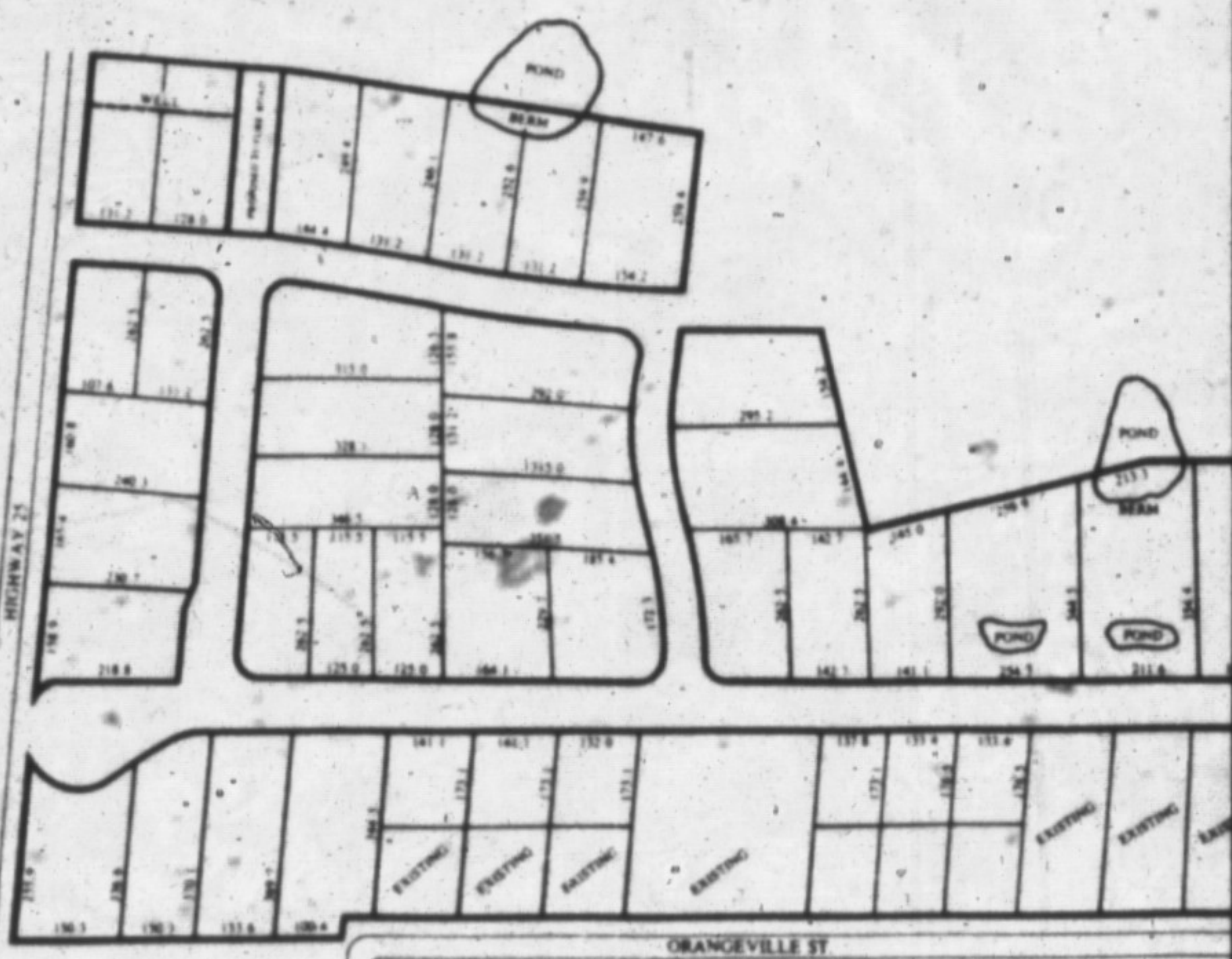
Lay about 5-7 cm of mulch in June, keeping it at least five cm away from plant stems.

The Last Chance In Your Lifetime For Your Dream Home.

Hillsburgh Heights

OPENING
FOR SALES
JULY 9, 1988

Now - For the first time an offering of serviced lots to the general public!



* 1/2 to 2 Acre Lots

- Located high on a hill overlooking the village of Hillsburgh
- Some lots with trees
- Some lots with ponds
- All internal streets paved
- Street lights throughout subdivision
- Fire hydrants
- Municipal water supply to each lot
- Underground hydro
- Underground telephone
- Natural gas service
- Cable TV (1989)

All the benefits of country living on a large estate lot combined with convenient access to—restaurants, churches, convenience shopping and:

- Public school
- Public library
- Ball park—adult & children's house leagues, baseball, soccer, etc.
- Hockey arena
- Hillsburgh Community Association
- Community service clubs (Lions, etc.)

Lots Priced From **\$69,900**

CUSTOM HOME BUILDING AVAILABLE THROUGH DUIKER FINE HOMES

A Project by J.A.J. Developments
A member of The Duiker-Bell Group of Companies

Head Office:

1-(416) **846-0850**

Located on Hwy. 25 at the north end of The Village of Hillsburgh

