

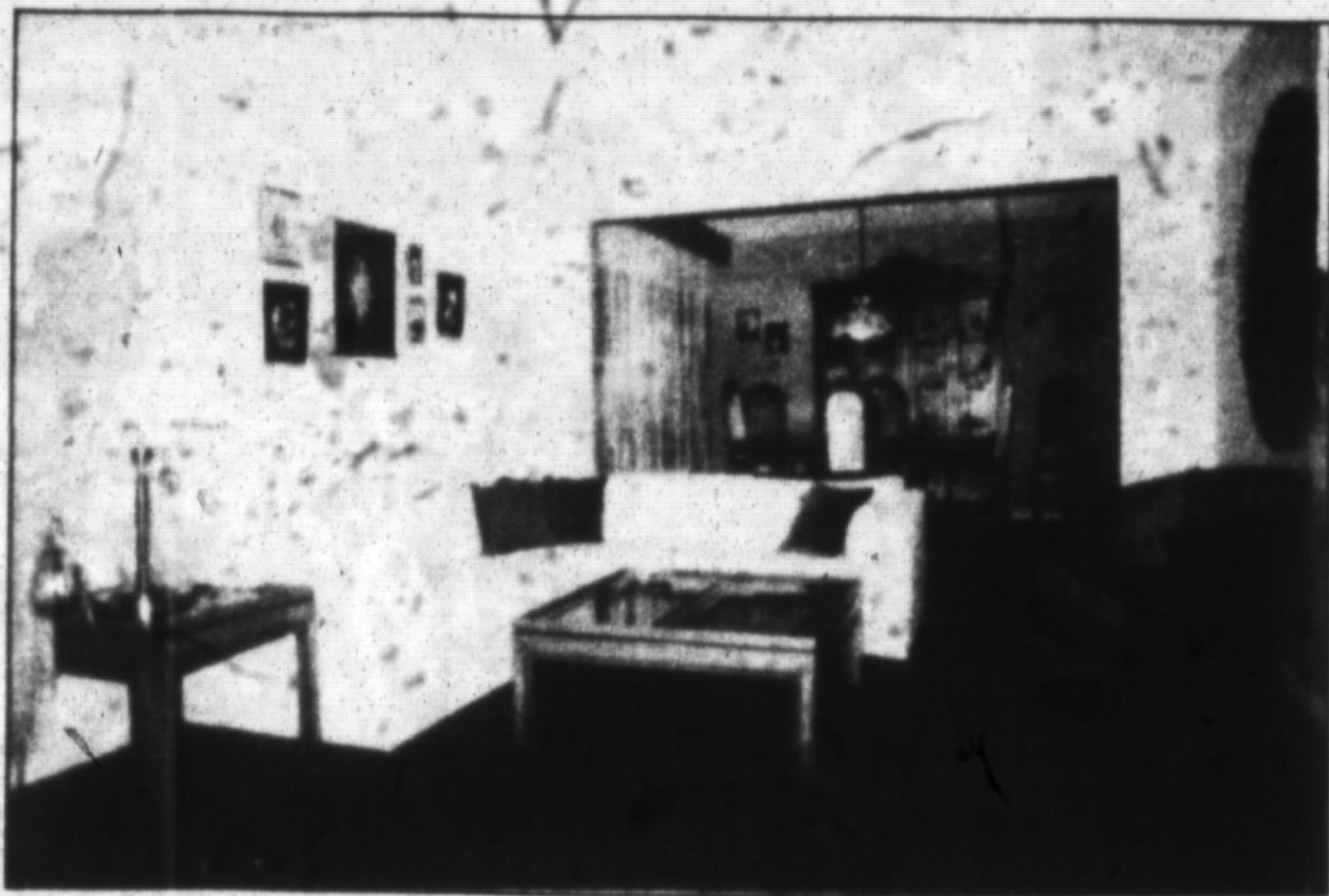
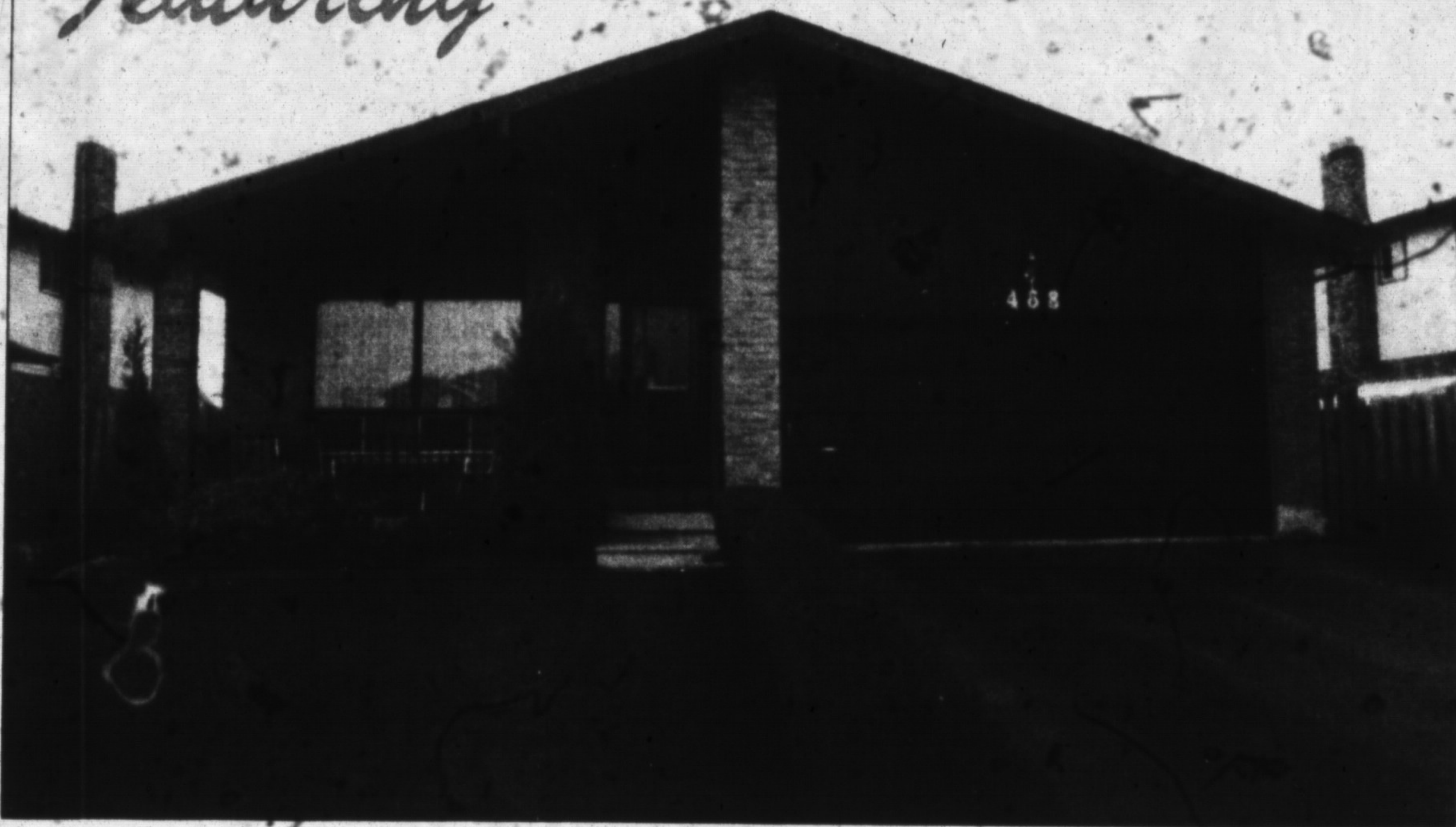
The Champion

Wed., May 11, 1988

**PULL
OUT
SECTION**

Real Estate

Featuring



468 Gowland Crescent

— As you approach this lovely backsplit, you cannot help but notice the professional landscaping that gives this home its special appeal. When you enter you realize that the vendors have an appreciation for comfort and warmth and the feeling lasts throughout their home. Both the formal living room and dining room are generous in size. A functional kitchen features dropped lighting, built-in dishwasher, and a walk-out to a beautiful (8'2" x 17'1") Florida room. Tucked in behind the spacious sun room is a 20' x 28' cedar deck and a pool-sized lot. French doors beckon you to the charming family room that boasts an Elmira wood-burning stove insert in the fireplace. Four bedrooms, semi en suite bath, finished recreation room, central air conditioning, and electronic garage door opener are only a few of the features this home has to offer.

For your personal viewing please call Lina or Wayne Warner at

878-2365

RE/MAX[®]