



22
ontario
st. s.
milton

MILTON'S NO. 1
REAL ESTATE
OFFICE

Above
the
Crowd!

RE/MAX



miltowne realty corporation

878-2365

Gary Thomas
Broker/Owner

TOR.
LINE
826-1030

NOBODY HAS SOLD MORE HOMES IN MILTON
FOR 1983, 1984, 1985, 1986, 1987 and so far in 1988*

GENE McLEOD	878-4304	NORALEE HYMUS	878-6382	MARY LONG	875-0071
STELLA HALL	878-4339	CAROL M. BROOKS	875-0067	FREDA LAWRENCE	878-4860
CLAYTON HACKENBROOK	875-0771	CAROLE STONHILL	876-4913	LORNE GUNDLACK	878-3155
BETTY INGLE	827-4286	LINDSAY McLAREN	854-2451	MAURICE MILJOUR	876-4577
MIKE MORGAN	878-8093	KEN NEWELL	878-5339	AUDREY NEWELL	878-5339
PAUL PAGE	878-2995	REJANE PETROFF	875-1515	LORRAINE RANDALL	828-SOLD
GAIL PULLEN	878-0110	JEAN SNOWDEN	878-3155	WAYNE WARNER	878-1084
PHIL PRESTIDGE	878-6924	ANGELIKA BEISNER	878-7057	LINA WARNER	878-1084

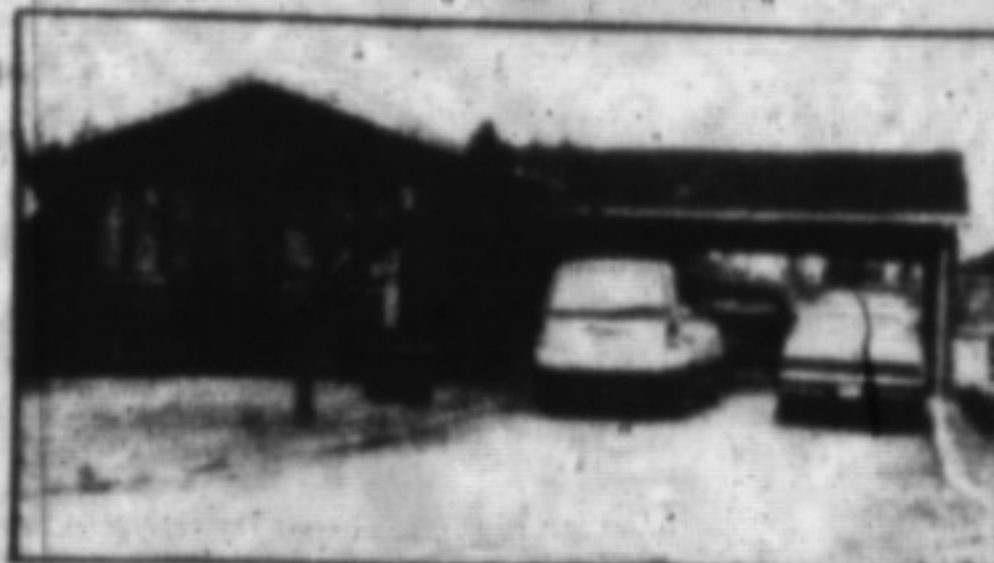
\$274,900



ROBERTSON CRES. EXECUTIVE — Backing onto parkland. Oak spiral staircase, upgraded broadloom, beautifully finished rec. rm., billiard rm., wet bar, cent. air, cent. vac., main floor fam. rm. with FP, art suite 4-pc. plus 4-pc. & 2-pc. baths. Call.

CAROLE STONHILL
876-4913

\$264,000



5,000 SQ. FEET, finished living area. Custom built bungalow in central Milton. 5 bedrooms, formal dining room, entertainment centre 27' x 25', family room, 2 fireplaces, Jacuzzi, spa, marble floor entrance, 3 baths — Unique home rich in detail. For more information, call.

GARY THOMAS
878-2365

\$196,900



DON'T TOUCH A THING! Just move into this raised ranch located in an area of fine homes. Central air, central vacuum, finished rec. room has air tight stove and wet bar, extra bedroom, 4-pc. 2-pc. & 3-pc. baths, 3 bedrooms, living dining room, a family sized kitchen. For further details call and ask for.

LORNE GUNDLACK
878-3155

REDUCED \$12,000



NOW \$197,900 — Raised Tudor bungalow in exclusive area of Timberlea. 3 bedrooms, finished in-law suite on above ground, lower level — bedroom, kitchen, living rm. & bathroom. Built-in bookshelves in family room, fireplace, central air, extensively landscaped, 120' frontage. A definite must to see! Call.

CAROLE STONHILL
876-4913

\$209,900



A CLEAR BLUE SWIMMING POOL is beckoning you to this 4-bedroom home in Dorset Park. Large air rm., sep. din. rm., kitchen with breakfast rm. Think SUMMER as you view this one. Call.

STELLA HALL
878-4339

\$229,500

RE/MAX SELECT HOME



HOME OF DISTINCTION ON GOWLAND. Executive 2-storey, 4-bedrooms, family room with fireplace and walk-out to sundeck, 4-pce., 3-pce., 2-pce. baths, sep. dining room, main floor laundry room, auto garage door, central air. Fully fenced, well landscaped yard, flagstone sidewalk.

GARY THOMAS
878-2365

\$289,900



SPRINGTIME IN THE COUNTRY — is a beautiful sight to see! Enjoy this 4 plus bedroom 2-storey set on an extraordinary landscaped 150' x 250' lot. French doors lead you to the heated solarium from a family room that features a fireplace insert that heats 1600 sq. ft. Finished basement with rec. rm., extra bedrooms. Large carpeted verandah. If this fits your housing dreams call!

MARY LONG
875-0071



HOW ABOUT THIS ideal home in town with country setting located on a gorgeous treed lot for that touch of class. cedar plank flooring in 12' x 9' & 9' x 9', many features too numerous to mention. Call.

MARY LONG
875-0071

\$239,900



REFLECTION OF SUCCESS — This home makes the grade. Attractive 4-bedroom, 2-storey — new broadloom in living rm., dining rm. & upper hall. Parquet flooring in fam. rm. plus fireplace insert and walk-out to deck. Newest cushion flooring in foyer, bathrooms and main floor laundry. Situated on extra large fenced landscaped lot. Call.

STELLA HALL
878-4339

\$144,900



OLD FASHIONED PRICE If you've been looking, you will recognize the value in this 3-bedroom home with an suite off master bedroom, eat-in kitchen, fireplace in liv. rm., bay window in dining room. Call.

BETTY INGLE
827-4286

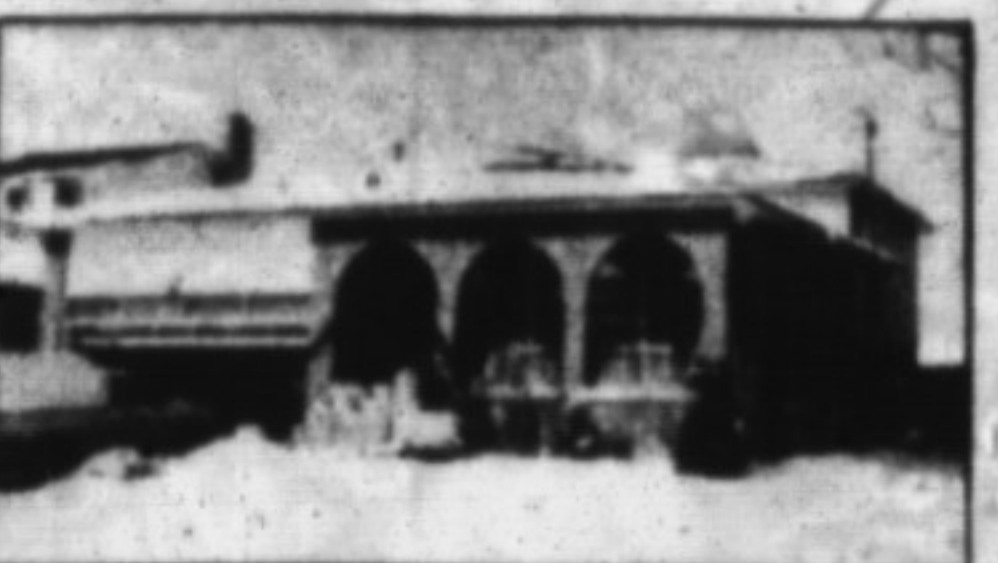
NOW \$191,000



REDUCED \$5,500. Enjoy summer to the fullest with the heated inground pool and interlocking brick patio and change house. Home features 4 bedrooms, finished basement with fam. rm. & fieldstone fireplace, living and dining rm. with fireplace, kitchen with walk-out. Call.

GARY THOMAS
878-2365

\$259,900



IN AN AREA OF FINE HOMES — Large backsplit on Moorelands Cres. Many extras and many upgrades. Central air, fireplace in fam. rm., woodstove in finished lower level plus den or extra bedroom. 3-pc., 4-pc. & 2-pc. baths. Call.

GAIL PULLEN
878-2365

\$379,900



ALPINE CHALET! Custom built chalet, unbelievably unique. Set on 1.35 acres in Campbellville, spring fed pond and stream, 5 spacious bedrooms, master with Jacuzzi, shower, tub, bidet & pedestal sink, plus family 4-pc. bathroom, 26 ft. living rm., dining room overlooking pond and garden, main floor laundry and powder rm., skylights. To view this gorgeous home in fantastic park-like setting call.

FREDA LAWRENCE
878-4860

* ACCORDING TO MLS STATISTICS