

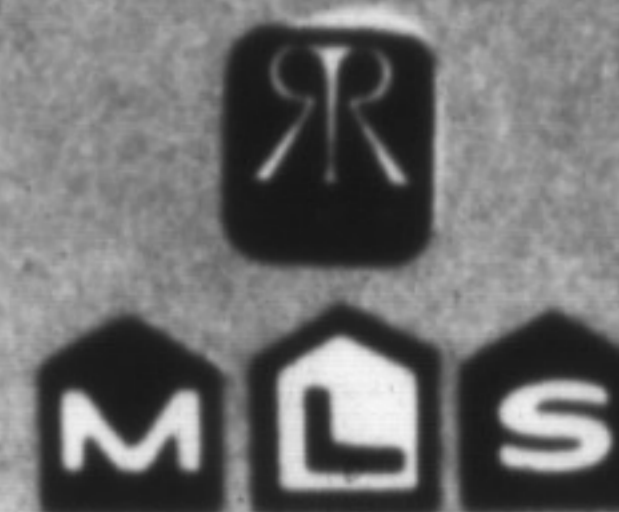


*Above
the
Crowd!*

22
ontario
st. s.
milton

MILTON'S NO. 1
REAL ESTATE
OFFICE

RE/MAX



miltonre realty corporation

878-2365

NOBODY HAS SOLD MORE HOMES IN MILTON
FOR 1983, 1984, 1985, 1986 AND 1987*

Gary Thomas
Broker/Owner

**TOR.
LINE
826-1030**

STELLA HALL 878-4339
CLAYTON HACKENBROOK 875-0771
BETTY INGLE 827-4286
MIKE MORGAN 878-8093
PAUL PAGE 878-2995
GAIL PULLEN 878-0110
PHIL PRESTIDGE 878-6924
NORALEE HYMUS 878-6382

CAROL M. BROOKS 875-0067
CAROLE STONHILL 876-4913
STEWART HADDON 878-3333
LINDSAY McLAREN 854-2451
KEN NEWELL 878-5339
REJANE PETROFF 875-1515
JEAN SNOWDEN 878-3155
ANGELIKA BEISNER 878-7057

MARY LONG 875-0071
BETTE BRITTAIN 878-2195
FREDA LAWRENCE 878-4860
LORNE GUNDLACK 878-3155
MAURICE MILJOUR 876-4577
AUDREY NEWELL 878-5339
LORRAINE RANDALL 828-SOLD
WAYNE WARNER 878-1084
LINA WARNER 878-1084

\$269,900

BT OF COUNTRY IN THE TOWN — Want 2.8 acres with 4-5 bedroom home. Then here's your chance to move and have the best of both worlds. Home is approx. 2,500 sq. ft. Upper level has potential for self contained apartment. Coach house, garage, pond and new circular paved drive are just a few of the features. Call

LORNE GUNDLACK
878-3155

\$159,900

PLEASE CHECK YOUR NEEDS — 3 bedrooms, 2 car garage, fireplace in family room, full basement, 2 storey, 1,700 sq. ft., near schools, only 5 yrs. old. NOW CHECK THE PRICE and call

GAIL PULLEN
878-2365

\$154,900

GRAB A RARE OPPORTUNITY — to move close to schools and bus lines. Value packed 2-storey, 3-bedroom home in Dorset Park area. Eat-in kitchen with refinished cupboards. Upgraded broadloom in living room, dining room hall and stairs. Large deck and mature 55' x 120' lot. Call

CAROL M. BROOKS
875-0067

\$145,900

GOOD VALUE! A nifty home for your money, 2-storey with gleaming parquet floors in living and dining room, eat-in kitchen, finished rec. room with playroom, 1 1/2 baths. Conveniently close to schools and shops. Shows like a dream. Call

STELLA HALL
878-4339

\$117,900

NO SNOW TO SHOVEL! Let someone else take care of your maintenance problems, but still own your own home! Childs Drive area, 4 bedrooms, 2-storey townhouse. L shaped living and dining room, eat-in kitchen, full basement, 1 1/2 baths, walk-out from liv. rm. to private backyard. Call

FREDA LAWRENCE
878-4860

\$157,900

FRESH ON THE MARKET — 3-bedroom raised bungalow with 4th bedroom in finished basement plus family room and 2 pc. washroom. Large private cedar deck off kitchen. Set on a mature 50' x 120' lot in Dorset Park. Call for more information

PAUL PAGE
878-2995

\$164,900

WILL FIT LIKE A GLOVE — Really sharp homey Cape Cod style. Good Dorset Park location, separate dining room, main floor family room, 3 bedrooms, full finished basement with rec. room and bar. No waiting — you can move in right away. Ask for

GARY THOMAS
878-2365

\$165,000

LIVING CAN BE GREAT in this 3-bedroom bungalow in Dorset Park. Including all appliances, central vacuum, very private fenced back yard. Vendor will hold 1st mortgage with good downpayment.

BETTY INGLE
827-4286

\$143,900

A GEM OF A SEMI — Situated amongst larger homes this one features 3 levels, separate dining rm., kit. with walk-out to large deck, 3 bedrooms, basement is fully finished with rec. rm., laundry rm., part fin den/4th bdrm. Nothing to do but move in. Call

REJANE PETROFF
875-1515

FOR LEASE Prestigious building in great downtown Milton location. Adequate parking. Main floor and second floor suites available. Call

GARY THOMAS
878-2365

1 BUSY PLAZA 3005 sq. ft. commercial.
2 FOR SALE INDUSTRIAL CONDOMINIUM UNIT 2000 sq. ft. — \$55,000 sq. ft. (New) 1800 sq. ft. — \$55,000 sq. ft. Call

PAUL PAGE
878-2365

BUSINESS FOR SALE

DOG GROOMING BUSINESS — includes all equipment, good potential for enterprising person. For more information please call and ask for

REJANE PETROFF

\$164,900

A REAL WINNER Very neat — well maintained home in desirable Dorset Park approx. 1800 sq. ft. of comfortable living. Family room with custom built fireplace. 3 well-appointed bedrooms, 1 1/2 baths. To view call

PAUL PAGE
878-2995

JUST LISTED — Executive 2-storey in desirable area of town, 4 bdms., main floor fam. room with f.p., hardwood floors underneath broadloom, master bdrm. with 4 pc. en suite & walk-in closet. Some new broadloom, 2 decks. All on 60' x 150' landscaped lot. Call

STELLA HALL
878-4339

Let us introduce ...

NORALEE HYMUS

Gary Thomas, Broker-Owner of Re/Max Miltonre Realty Corporation is pleased to welcome NORALEE HYMUS to the Re/Max Sales team. Noralee is a resident of Milton and is very excited about her new career in real estate and is pledged to giving full-time maximum service. If you are going to buy or sell, or you are just thinking about it, Noralee would like to talk to you. Please give her a call at her office 878-2365 or her residence 878-6382.

\$107,700

ALL THE COMFORTS OF HOME — and no outdoor work to do when you own this easy-care townhouse. Back onto open space for that added touch of privacy. Finished rec. room, eat-in kitchen, includes all appliances, shades, blinds, mirrors. Upgraded carpeting and flooring. Call

GARY THOMAS
878-2365