



RE/MAX
Above the Crowd!
22 ontario st. s. milton
MILTON'S NO. 1 REAL ESTATE OFFICE

RE/MAX



miltowne realty corporation
878-2365

Gary Thomas
Broker/Owner

TOR. LINE
826-1030

NOBODY HAS SOLD MORE HOMES IN MILTON THROUGH M.L.S. FOR 1983, 1984, 1985 and so far in 1986.

CLAYTON HACKENBROOK 875-0771
BETTY INGLE 827-4286
MIKE MORGAN 878-8093
PAUL PAGE 878-2995
GAIL PULLEN 878-0110
BRIAN GREEN 878-6195
PHIL PRESTIDGE 878-6924

STEWART HADDON 878-3333
JOAN JOHNSTON 877-7210
LINDSAY McLAREN 854-2451
KEN NEWELL 878-5339
REJANE PETROFF 878-8282
JEAN SNOWDEN 878-3155
GENE McLEOD 878-4304

BETTE BRITAIN 878-2195
FREDA LAWRENCE 878-4860
LORNE GUNDLACK 878-3155
MAURICE MILJOUR 876-4577
AUDREY NEWELL 878-5339
LORRAINE RANDALL 878-7107
WAYNE WARNER 878-1084
LINA WARNER 878-1084



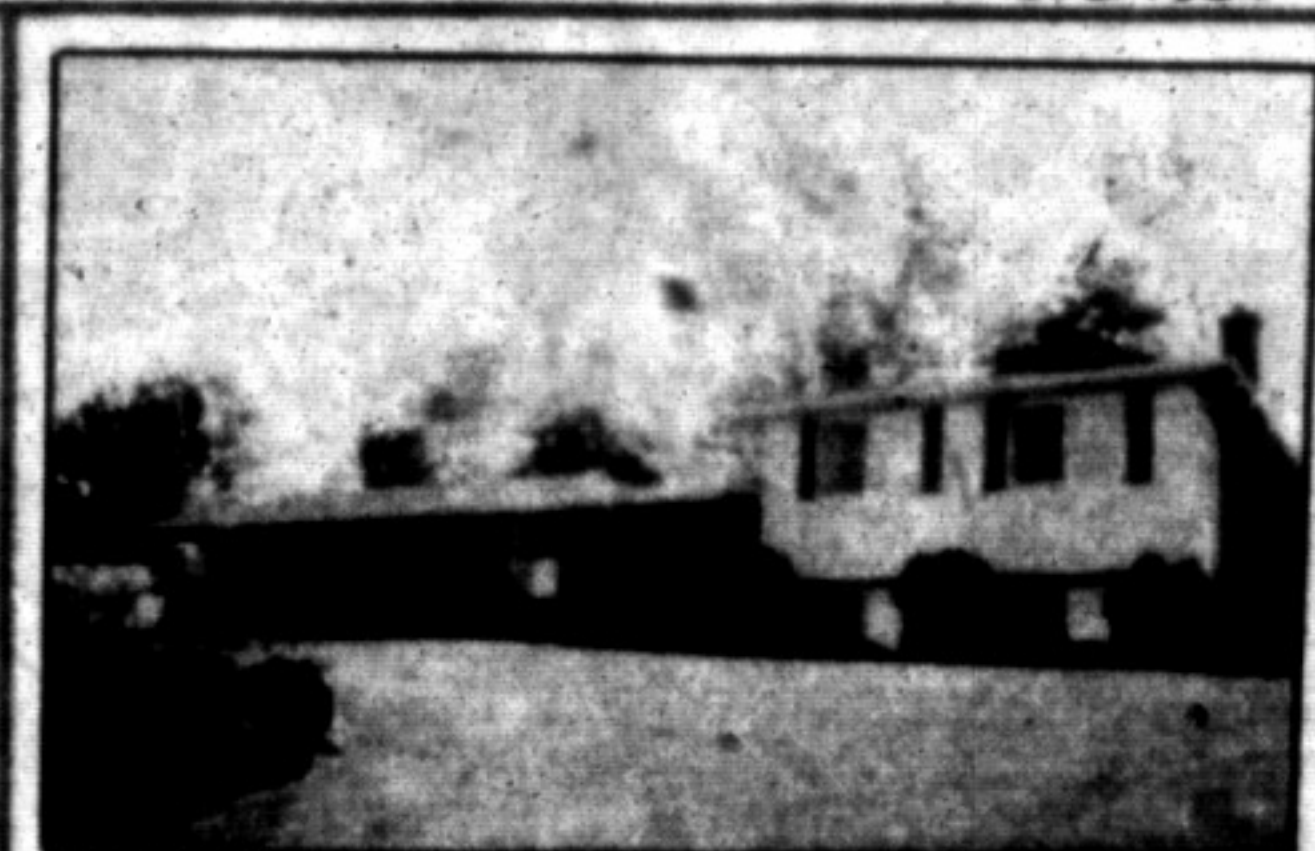
MANY LEVEL LIVING — 5-level back-split situated near Foster School. Features new central air, electronic air cleaner & humidifier. Main floor family room with fireplace, main floor laundry, basement level fully finished with rec. room & 5th bedroom. This home has everything but you! Call **BETTE BRITAIN** \$161,900



THE TOTAL TOWNHOUSE — Very desirable area. Living room with walk-out to balcony, separate dining rm., main floor laundry, 3 bedrooms, walk-out from lower level. 4 pc. & 2 pc. baths. See and you'll be sold. Call **JOAN JOHNSTON** \$97,500



COUNTRY SPLENDOUR — Set on 1.64 acres in Lowville is this attractive 3-bedroom bungalow, surrounded with the scenic beauty of trees and rivers. Your privacy and quiet are assured. Call today to view. **JEAN SNOWDEN** \$179,900



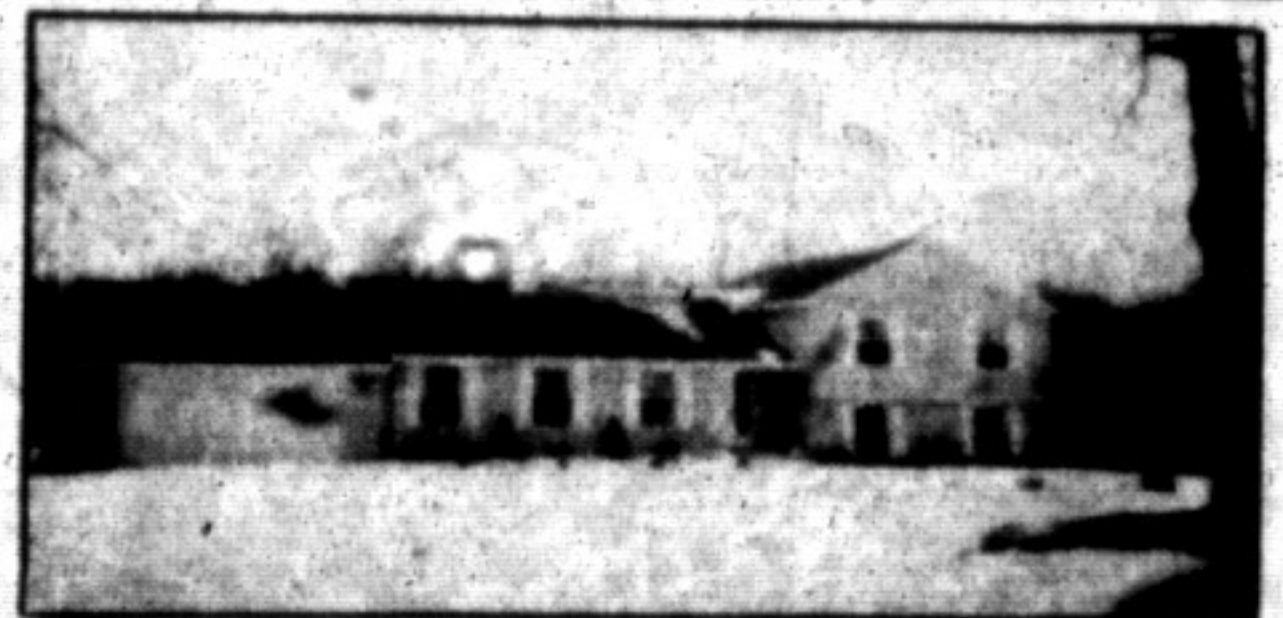
BROOKVILLE ESTATES. Spring possession, 4 bedroom split level custom home on 2 1/2 acres. Fabulous scenic view from all sides. Call for more information **REJANE PETROFF** \$218,900



9TH LINE — 101 ACRES — 70 acres in production. Turn of the Century unrestored farm home with excellent potential. Barn with 6-box stalls, drive shed. Situated in Halton Hills within 5 minutes of 401 Highway. Call and ask for **LINA or WAYNE WARNER** \$499,000



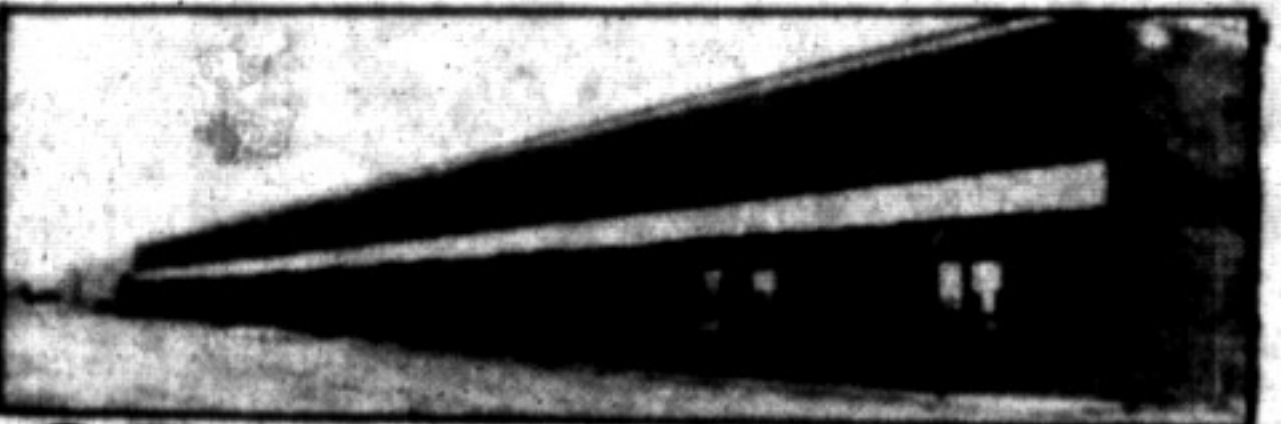
CALLING ALL FARMERS! HOBBY OR HORSES? 7 acres plus 130-year-old century Victorian homestead that features 10 spacious rooms oozing that old world charm. 3 car garage, 2 drive sheds, bank barn with 12 box stalls, spring fed pond, 50-75 trees. Set back off the road. Opportunity too good to miss. Call for your personal tour. **PAUL PAGE** \$265,000



PRICE REDUCTION. VALUE PACKED — COUNTRY HOME. Call to see this custom "Robertson" Built home, set on one acre with a number of mature trees. French door leads to sunken living room and raised dining room. Kitchen has solid oak cupboards and ceramic floor and leads to the family room with oak beams and floor plus air tight stove. Don't hesitate... let's negotiate. Call **GAIL PULLEN** \$199,900



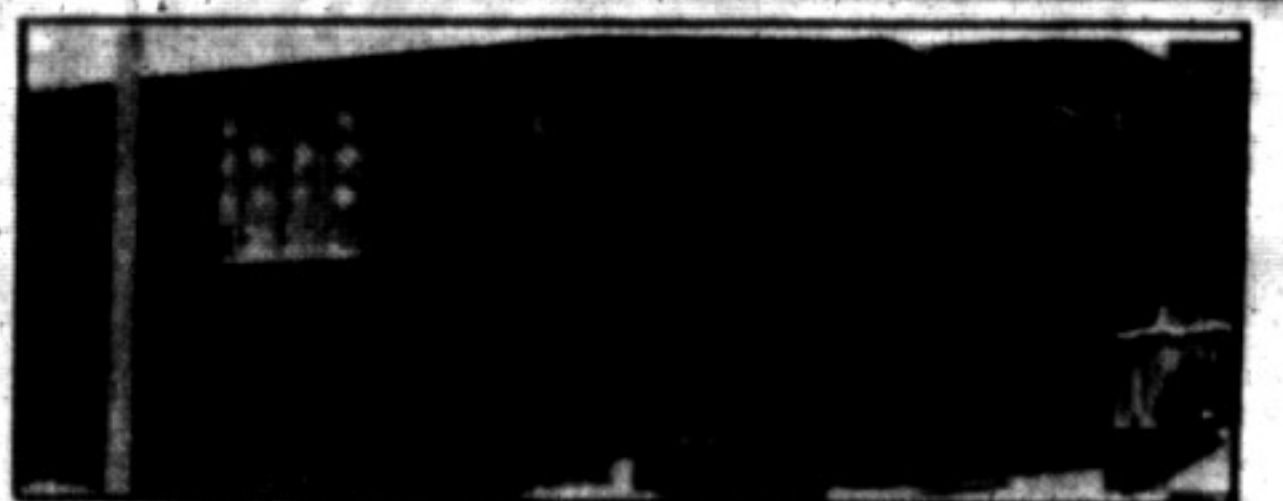
THIS OWNER SAYS SELL! A truly fine home set on a beautifully landscaped lot. It's easy to be hospitable in this 2-storey executive in choice area of town. Formal living room and dining room, greenhouse kitchen, family room with brick fireplace. Super sized master bedroom with 4 pc. en suite, plus two more large bedrooms & 4 pc. bath. Let me show you. Call **BETTY INGLE** \$179,900



SPACE TO LEASE
15,000 sq. ft. unit. Drive in & Loading dock.
1,800 sq. ft. unit. Drive in and Loading dock.
1,480 sq. ft. unit. Drive in and Loading dock.
2,000 sq. ft. unit. Loading dock.
Call **PAUL PAGE** for more information.



SUPER NEW LISTING. This 2-storey home has been completely remodelled with new floor, new oak kit. cupboards, new broadloom. Main floor sunken family room. Double car garage. Set on a large lot in Dorset Park. Call **BETTY INGLE** \$160,000



BACKS ONTO PARKLAND — Are you searching for a home with 3-4 bedrooms, main floor laundry and family rooms, 2-4 pc. baths and extra 2 pc., fully finished basement, 2 fireplaces, central vacuum system and double garage. Your search is over — call today for your appointment to view. Ask for **FREDA LAWRENCE** \$157,900




TO BE BUILT — Near town centre a 3-bedroom, 1 1/2 storey custom Cape Cod. Be the first family to live in this "to be built" home and choose the upgrades and options available. Call for more information. **GARY THOMAS** \$169,000

VACANT LAND
Beautiful 25 acre parcel with 25,000 mature trees. Small cedar log cabin on property. 790 ft. frontage. N. of 401. Call and ask for **BRIAN GREEN** \$139,000

INDUSTRIAL LAND
4.87 acres industrial land serviced. Central location, good exposure. Priced to sell. 65,000 per acre. Land can be severed and will build to suit. Call **LORNE GUNDLACK/PAUL PAGE**

INCOME INVESTMENT

Commercial zoned, brick building, 17 efficiency units — good downtown Milton location..... \$345,000
Excellent Commercial Building in good condition. 16 Parking spaces..... \$395,000
For more information call **GARY THOMAS**



IF YOU'RE NOT GETTING GOOD RESULTS...
LET OUR PROFESSIONAL SALES STAFF GO TO WORK FOR YOU! CALL US TODAY! 878-2365.