

RE/MAX
 miltowne realty
 corporation
*Above
 the
 Crowd!*
 878-2365

ROYAL LEPAGE
 REAL ESTATE SERVICES LTD. • REALTOR
 388 Main St. E., Milton
878-8101
 Toronto Line 826-9218

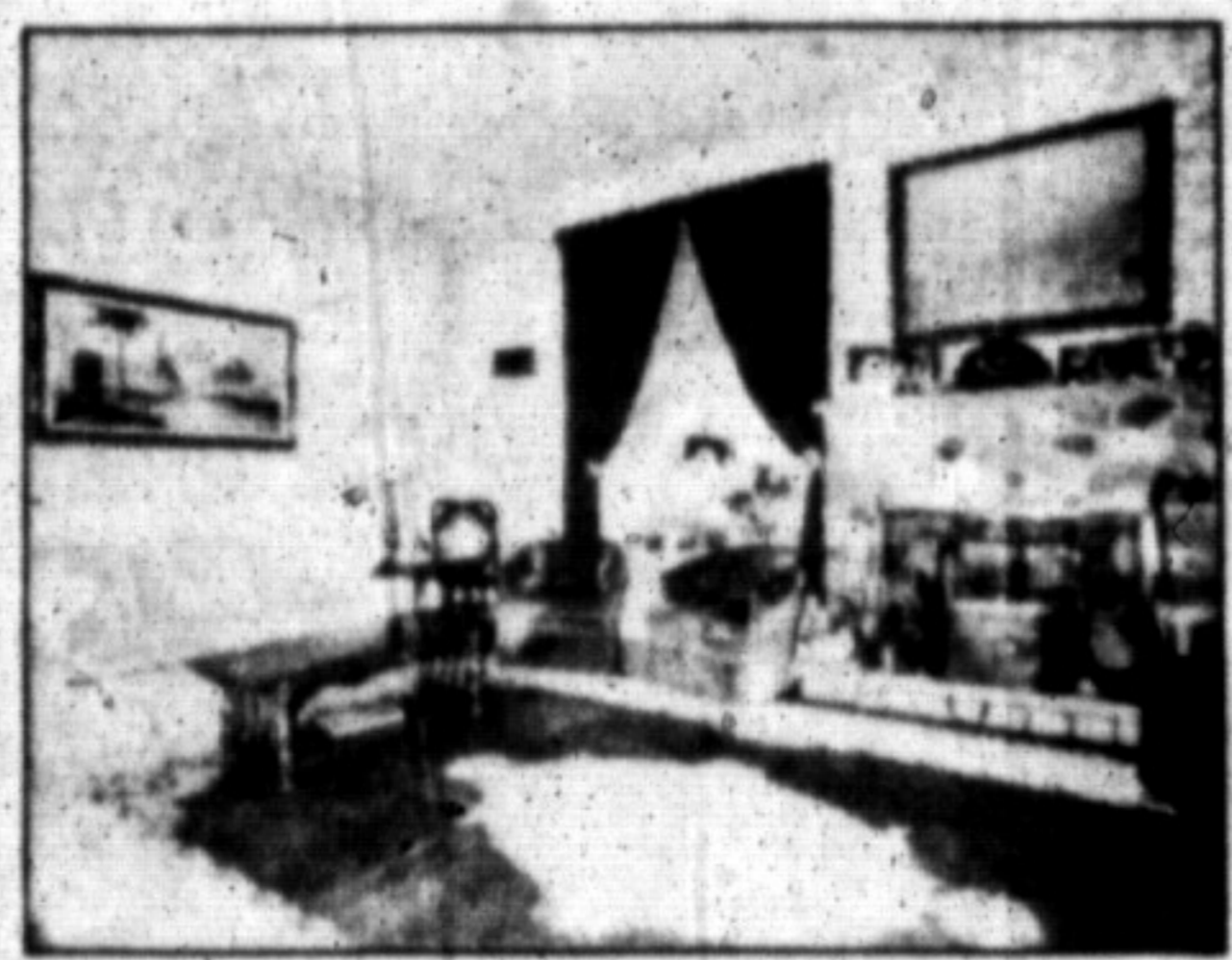
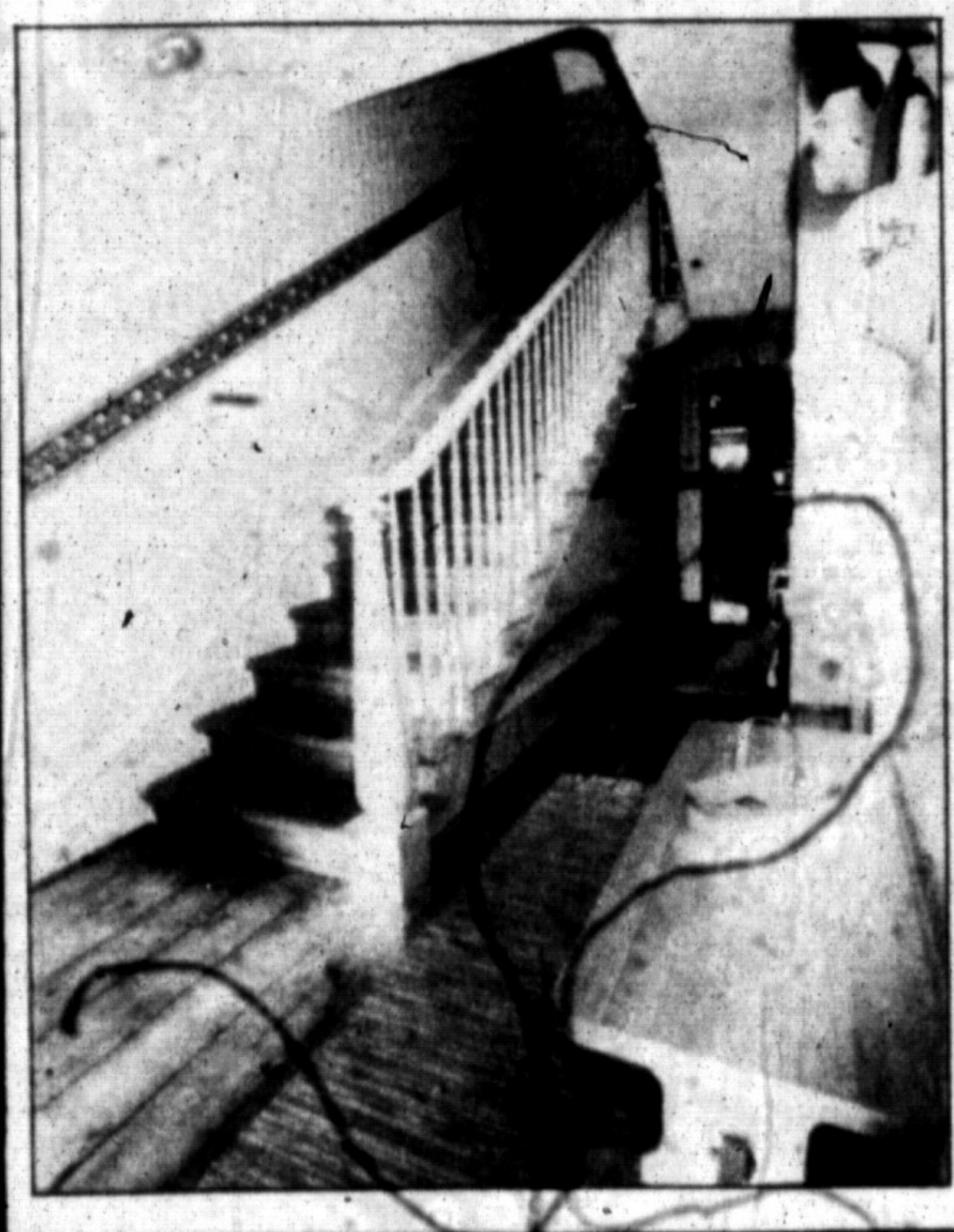
REAL ESTATE

Wednesday, November 26, 1986



HOBBY FARM OR HORSE FARM

This Century Victorian home is located only 10 minutes from the 401 and 35 minutes from Toronto. Situated on 7 acres with 50 to 75 shade trees, spring fed pond, 2 drive sheds, bank barn and 12 box stalls with potential for 8 more. The 130 year old home is authentic and beautifully maintained and offers for your enjoyment 4 plus bedrooms, large formal living room, dining room, den, study or library, large country kitchen with wainscoting and new solarium floor. Directly off the kitchen we have a main floor laundry room with 2 pc. washroom. Exceptional staircase leads to 4 spacious bedrooms and 4 pc. bathrooms. New furnace, upgraded insulation. To see this beauty call Paul Page RE/MAX Miltowne Realty. 878-2365.



PULL OUT SUPPLEMENT TO THE CANADIAN CHAMPION