

Needy are more numerous as Christmas Fund opens

There are more than 100 families in Milton which won't be able to afford a traditional Christmas celebration, unless their fellow citizens are willing to help them.

For the past four years, Miltonians have demonstrated that this is a caring community by contributing to the less fortunate through The Champion Christmas Bureau Fund. Last year, \$10,000 worth of food and gifts were distributed to needy families by the Salvation Army, thanks to donations to the fund.

Unfortunately, the number of families in need in Milton has continued to rise year after year. In 1985, the Army had 86 on its list and this year the list includes more than 100 names.

"The Salvation Army will require at least \$10,000 this year. It's sad to think that there are so many people who need this kind of help, but at the same time it's great to see so many others willing to give," said Champion Publisher Herb Crowther who chairs the local fund drive.

He reports receiving several telephone calls from those who have donated in the past. They were wondering if the newspaper was accepting donations and they

were assured the Christmas Fund is alive and well.

The first donation was made two months ago by members of the Ladies Auxiliary of Milton Fire Department and more donations have been trickling in. Mr. Crowther said he's extremely pleased the community has responded without being prompted. He is also concerned the goal of the campaign be met in time to benefit the families on the Salvation Army's Christmas list.

Donation bottles will be placed throughout the town this week to make giving easy. The response to this portion of the fund-raising drive has always been good, according to the local chairman. Those who want receipts for tax purposes or who will be making large contributions can make them at The Champion office, 191 Main St. weekdays between 9 a.m. and 5 p.m.

In the past, donations have been received from businesses, individuals, schools, churches and organizations such as Girl Guides and Boy Scouts. With this kind of support enjoyed for the past four years, Mr. Crowther hopes the fifth annual Christmas Bureau Fund drive will again enable everyone in Milton to have a Merry



Children will be pleased Town hall tree lighting canned

A grinch has popped up in the plans for what began last year as an annual Christmas Tree lighting and Christmas Carol Sing on the steps of town hall.

Last year, two huge trees were brought in for the lighting ceremony held Dec. 16. There was hot cider and baked goods and the turnout, said town Administrator Roy Main, was "quite substantial".

But even though it was billed as an annual event, Mr. Main told councillors Monday night, "the potential

for the event remains extremely high, however, it is the opinion of staff that it be more appropriately held when the landscaping project for Victoria Park is concluded."

Subsequently, Mr. Main said, staff is recommending the event not be held in 1986 but referred to 1987 when a more comprehensive program can be arranged.

Mr. Main said an additional concern is the limited heating capacity in the Meeting Hall (former registry office) where the cider and baked goods were served last year.

Snow hurts blood clinic

Despite winter's first snowstorm and a one-hour power failure, Milton's November blood donor clinic produced 209 units of blood Thursday at Milton Mall.

Organizers knew they were in for

a rough day when a surprise major snowstorm hit the area. In addition, early in the proceedings, a local power failure within the mall, stopped the clinic in its tracks for about an hour. The quarterly clinic will return to Milton Mall in February.

The Canadian Champion

A Metroland Community Newspaper — Serving Milton in its 127th year

DOOR-TO-DOOR FLYER DISTRIBUTION

Any day, any quantity. As low as \$35 per thousand

Call DENNIS WILLIS 878-2341

VOLUME 126 — NUMBER 20

MILTON, ONTARIO, WEDNESDAY, NOVEMBER 26, 1986

34 PAGES — 30 CENTS

Community Notebook

Christmas Fair has German flair

The Oswald Family presents its seventh annual German-Canadian Christmas Fair in the Bayerischer-Hof Restaurant, Steeles Ave. from 11 a.m. to 8 p.m. Sunday.

Featured will be hand-painted furniture, beer steins, records and tapes, flower arrangements, authentic clothing, wooden toys, train sets, cuckoo clocks and hundreds more items to make Christmas more enjoyable.

Restaurant manager, Ralph Oswald, said there will be live entertainment from 4-9 p.m. plus food and door-crasher specials.

More time to buy

Milton Liquor Control Board of Ontario outlet on Main Street will enjoy the added revenue of extended hours this year.

This year, the liquor store will have extended hours until Christmas. The store opens every day at 9:30 a.m. but it will stay open Dec. 11-12 until 9 p.m. and Dec. 19-20-22-23 until 9 p.m.

Seniors minister is speaker

The Region of Halton's Elderly Services Advisory Committee has invited Milton residents to attend its first annual meeting. It will be held next Tuesday from 3-4:30 p.m. in the regional council chambers.

Dorothy Singer, manager of program development, office of the Minister for Senior Citizens Affairs, will be the guest speaker. Refreshments will be served.

Injured workers meet

The North Halton Association of Injured Workers will meet tonight (Wednesday) at 7:30 p.m. in the Optimist Centre on Commercial Street.

For more information on the group call 877-9697 or write c/o Box 44, Milton, Ont.

Milton man on board

Roger Christensen, of Milton, has been elected to the Board of Regents at Dana College. Located in Blair, Neb., it is a four-year liberal arts college of the American Lutheran Church.

Mr. Christensen, currently president and chief executive officer of National Sewer Pipe, received his B.A. from Blair in 1961 and a B.Sc. from the University of Colorado.

Money reopens farm

Spruce Lake Farms, at Bronte Provincial Park, has received extra funding and will re-open for the winter.

The farm was closed after cutbacks in provincial funding which eliminated funding for a worker in charge of the farm. The animals were moved to the children's farm and orchard.

Quote of the Day

Beware of those with all the answers. Embrace those with all the questions.

Inside Today's Champion

Parade coverage	2, 3
Teen dance	4
Police blotter	5, 5
Ontario St. meeting	6
Dump benefit	7
Sports	8
Minor Hockey	9
Classified	12
Editorials	B1
Date line	B3

Inserts

The Champion's Christmas Song Book, Hamilton Auto, Super Dominion, Shoppers Drug Mart, Cashway, The Bay.



In a final effort to raise funds for the Santa Claus Parade, balloons were sold by clowns along the parade route. It is estimated that more than 5,000 people watched the annual event Sunday afternoon which included no less than 17 marching bands and 60 floats. See more photographic coverage on Pages 2 and 3.

Parade was an all-around winner

By VICKI BURLOCK
Champion Reporter

Many winners resulted from Sunday's Milton Santa Claus parade. Those include the children (and young at heart) who lined the streets, several who bought raffle tickets and the many who donated floats.

But the biggest winners of all will be the needy of Milton.

The second-place theme float prize was won by Dufferin Aggregates and they have decided to donate the \$100 cheque to the Canadian Champion's Christmas Bureau Fund. The fund raises money for the Salvation Army which buys Christmas dinner and gifts for Miltonians who are less fortunate.

The first-place theme float winner was the Knights of Columbus while the Trillium School won for the most creative non-theme float.

More than 5,000 people lined the parade route to watch the 1 1/2-hour parade even though it rained for a short while.

"The response was great and the quality of the floats improves every year," said Bonnie Ward, program supervisor of the Town's Leisure Services Department. "The hustle and bustle of organizing the parade was great and everyone had a good time."

Muriel Tucker, of Commercial Street, won the Can-Travel mini-cruise to the Caribbean and the tickets were officially presented to her on Tuesday. Three prizes of

dinner-for-two at Swiss Chalet were won by Sheila Dowdall, of Concord, Ont., Charles Parchem, of Campbellville, and Daphne Austin of Hornby.

Although not all of the \$12,000 needed to support the parade has been raised, organizers have not yet counted the money raised from balloon sales. In addition, the Rotary Club has not counted their collection from the buckets they had out on Sunday.

Many clowns and Santa Claus visited Milton District Hospital after the parade was over and patients appreciated the gesture, said Mrs. Ward.

"It seemed to cheer them up and really made the parade a total success," she said.

Hearing to decide fate of Christian school

By JIM ROBINSON
Champion Reporter

The Niagara Escarpment Commission will meet tomorrow (Thursday) in its Georgetown offices to decide if the Halton Heritage Christian School and Emmanuel Baptist Church will be allowed to permanently locate on lands owned by Louis Nadalin.

A handful of the school's supporters were at town council Monday evening to hear comments from the town regarding the application for permission made by Mr. Nadalin on behalf of the school. There is also the second application by the church to set up on the same land. The NEC is treating both as a package application. The NEC had written to the town asking for those comments prior to the hearing.

The town's actual comments were few. Planner Bob Zsadyani stated the one area of concern the town

has was for "the safety of the students being taught at the school." In particular, Mr. Zsadyani said the town would like to see "slight alterations" in order for the building to meet fire code and National Building Code requirements. Mr. Zsadyani said the lands are under direct control of the NEC so the town's bylaws and regulations do not apply.

Mr. Nadalin, flanked by realtor Gus Goutouski and Rev. Ken Campbell of Emmanuel Baptist Church, did not speak to town council on the application.

Mr. Campbell, however, did try to make a number of comments about the situation which had forced his church to close the Christian school in Emmanuel Bap-

tist, a situation which is currently being appealed in the courts.

asked to speak strictly to the NEC request of the town, Rev. Campbell said the church congregation now intends to move the church and the associated school to the lands Mr. Nadalin owns on the escarpment, along Appleby Lane. He said it is the intention of the congregation to sell the church and property on Commercial St. a location it has had for 30 years.

Councillor Rose Harrison asked what might happen to the property and was told the "R3" zoning doesn't offer much leeway. Rev. Campbell said one of those uses

Continued on Page 3

Thursday's snowfall was tough on traffic

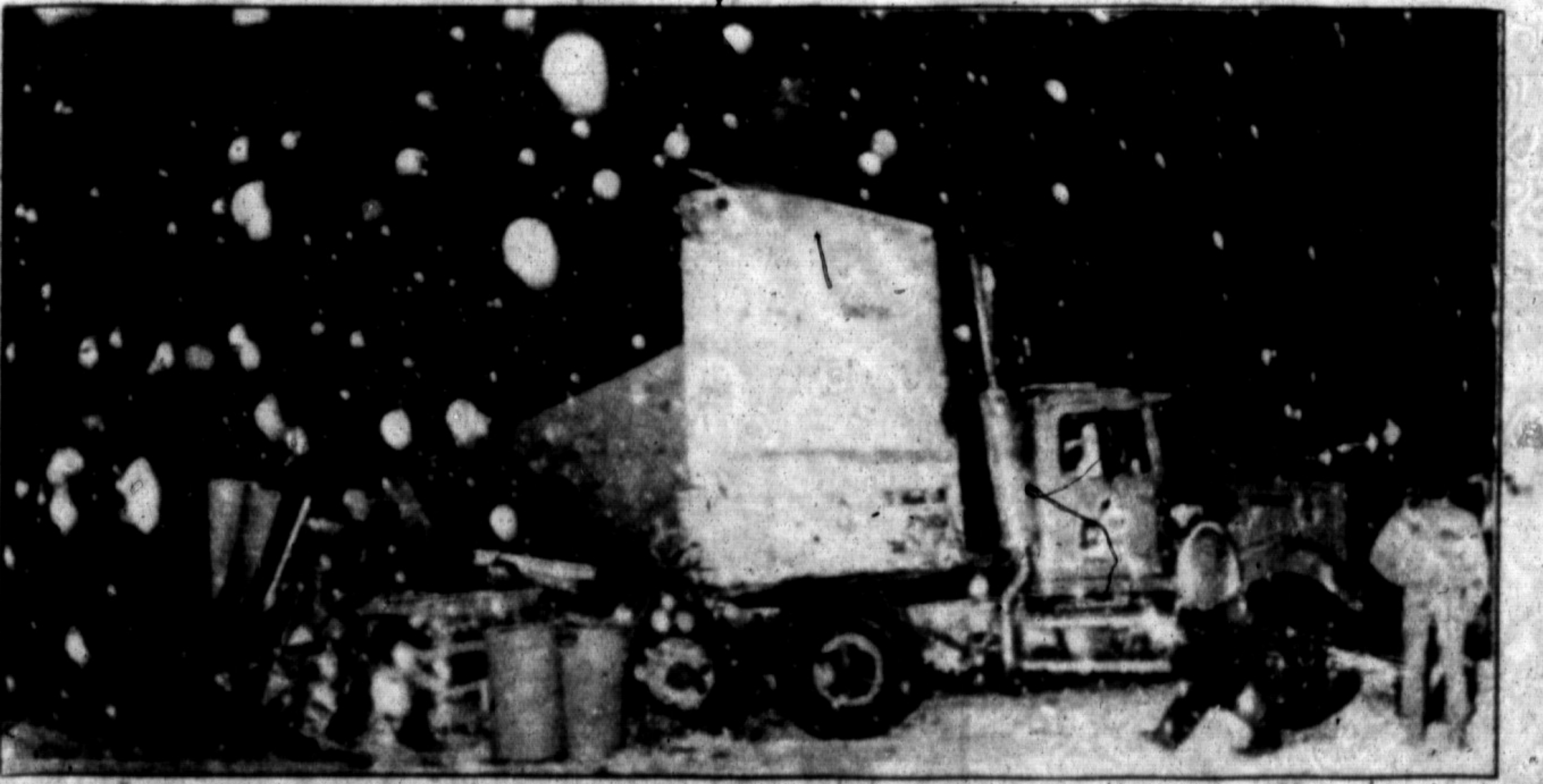
Last Thursday's snowstorm wreaked havoc on the traffic flow around town and along the 401. Halton Regional Police report only a few minor fender-benders but the OPP say that Thursday was one of their busier days.

Milton OPP were called to the scene of more than 27 different accidents over the course of the day. Seven of those accidents occurred along Highway Five; three along Highway 25; while the remaining 15 were scattered along the 401.

Nine of the accidents involved personal injuries, five people were admitted to local hospitals.

Traffic was backed up for miles in the westbound lanes of the 401 from 9:30 p.m. to 1 a.m. due to a tractor trailer veering from the eastbound lanes, across the median into the westbound lanes. Drivers sat in their idling cars with only their parking lights on while OPP attempted to clear the debris from the over-turned truck.

Members of Milton Fire Department were called to the scene because the truck was carrying hazardous materials.



Traffic in the westbound lanes of the 401 was backed up for miles from Highway 25 on Thursday evening when this tractor trailer dumped its load into those lanes. The driver, Gilles Lacoursiere of Montreal, suffered only minor injuries in the incident. OPP say that the accident

occurred when Mr. Lacoursiere swerved in the eastbound lanes to avoid a skidding car. His vehicle crossed the median. The tractor trailer, owned by Direct Transportation Systems was carrying a 5 gallon container of methanol.