

Councillors want waste program tried here

We may see "Blue Box" waste-sorting boxes at our curbs in the future.

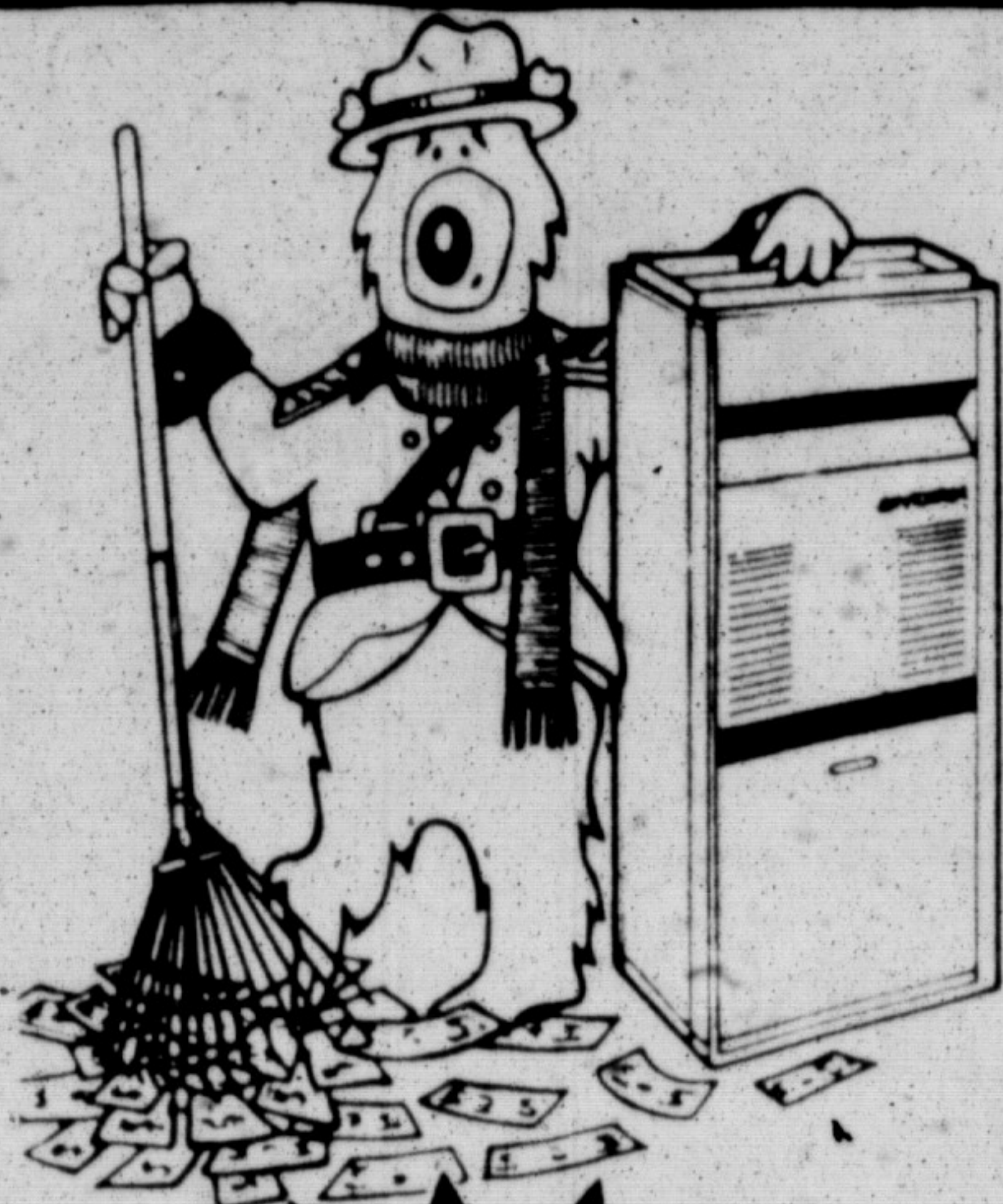
The region has received a report on the Mississauga separation-at-source program used to collect recyclable goods.

Mississauga residents were given large, blue plastic boxes into which they were asked to put recyclable waste such as glass and metal cans. The boxes are left at the curbs with normal-bagged garbage. The object is to return anything which can be

recycled while using only normal waste to fill the garbage dump and thus extending the life of the dump site.

Some regional councillors, have said they favour adopting the program in Halton.

AUTUMN'S WHEN I GET READY FOR WINTER. YOU SHOULD TOO!



LET YORK HELP YOU!

Get the bear facts on winter readiness. Talk to your participating York dealer about the York Stellar 2000 High Efficiency Gas Furnace system.

It keeps your comfort level up and your costs down. You can save from \$100. to \$200. with York's limited time offer Super Autumn Cash Rebates.

YORK
Heating and Air Conditioning

SUPER AUTUMN CASH-REBATES!

NO PAYMENTS
Until April 1987 on Union Gas delayed financing.



BRANAIR RESIDENTIAL LTD.

842-2212 522-2553
Oakville Hamilton
The Energy Experts



Milton fire fighters were called to the scene of a blaze at Langholm Nurseries at 6711 Highway 25 Monday evening. The fire started in a small maintenance area at the location and the damage estimate is set at \$15,000. No one was injured in the blaze. The fire department was notified

about the incident by an anonymous passerby, and they would like to discover the witness's identity. A short in the soil heating cable at the nursery is being investigated as a possible unofficial cause of the blaze.

Photo by JON BORGSTROM

NHL stars try eatery hat-trick

By VICKI BURLOCK
Champion Reporter

What do Ron Francis, Bobby Crawford and Greg Millen have in common?

Not only are all three of them National Hockey League players, but they have become separate investors in the Moviola Restaurant in Carriage Square.

All three investors once played for the Hartford Whalers although Mr. Crawford was traded in March to the New York Rangers for Mike McEwen and Mr. Millen is now a goalie for the St. Louis Blues. They, along with several other investors, had invested in the Moviola chain before and decided the Milton location would be a profitable investment, said marketing manager Jordan Grant.

The restaurant is scheduled to open Nov. 1 and will seat 100 customers. The Moviola restaurants are a chain of family eateries, specializing in finger foods, steak and chicken entrees as well as Italian and Mexican dishes and have a children's menu.

During noon the restaurant will cater to business people with the dinner hour designed for family dining and after 9 p.m. the lights go down and the music comes up when the restaurant turns into a bar with a dance floor and disc jockey.

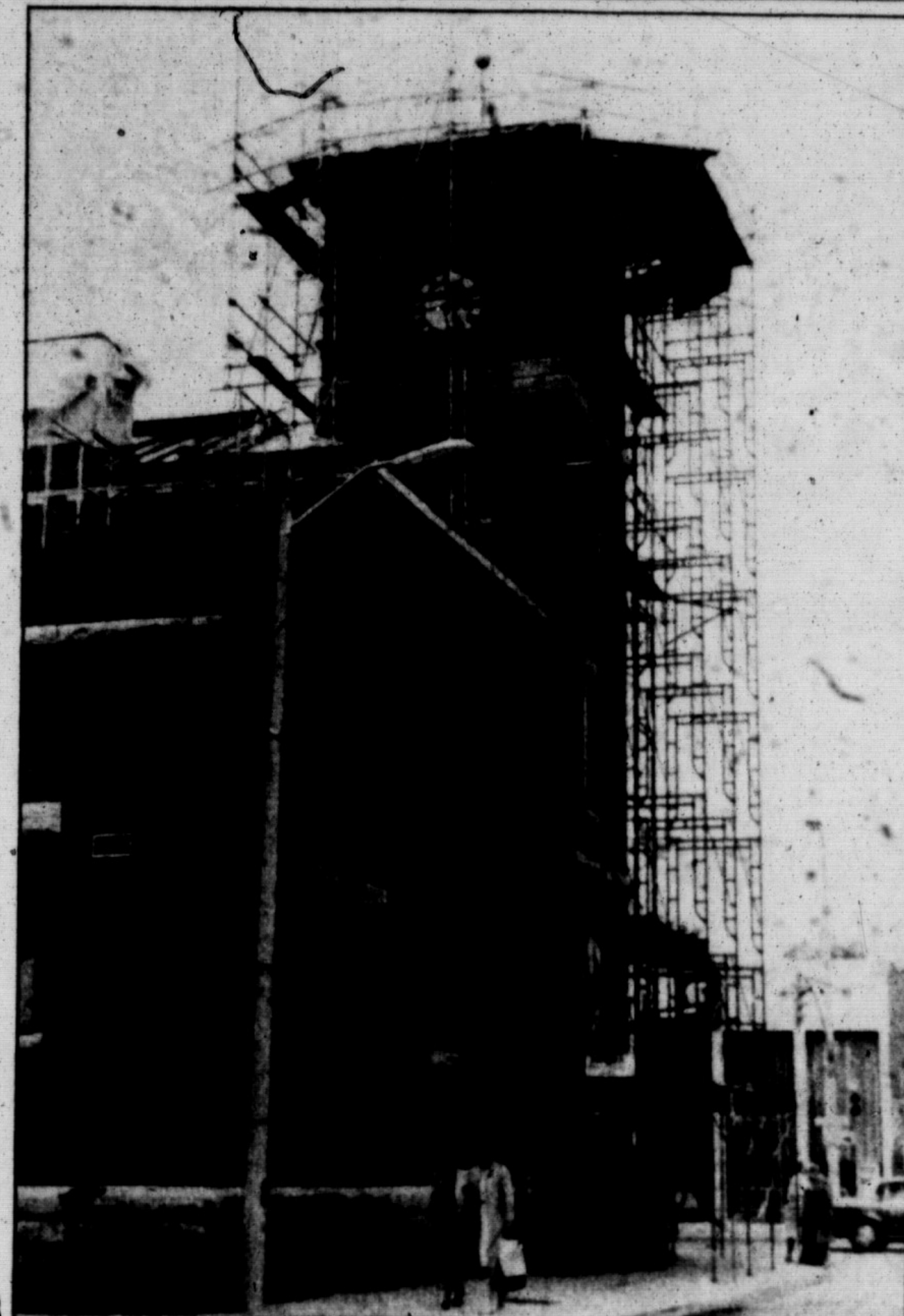
"We think the restaurant will be a big success and that it will become a popular nightspot," said Mr. Grant.

Approximately 70 per cent of the Carriage Square complex has been leased although some of the businesses have not yet been opened.

"We expect by Christmas that more spaces will be leased as they are moving fast," Mr. Grant said. "We are working with a number of different tenants to lease including a financial institution."

To help ease the parking congestion in the plaza, 30 parking spaces have been leased from a local apartment building for employees of the mall to use.

Pamphlets have been printed to advertise the storage spaces available to rent in the basement of Carriage Square. All but one storage space are in the 100-400 square-foot size with one space measuring 2,000 sq. ft. Interested persons should contact Phil Prestidge of Century 21 at 878-8495.



Work continues on changing the Milton Post Office into the new Moviola Restaurant which is owned by three National Hockey League players.

Decline days may be over

The days of declining enrolment in Halton's public school system may be over.

Bob Williams, superintendent of employee services, said projections for Sept. 30 enrolment in the schools suggest the board will need as many as 30 more full-time teachers this year compared with last year.

The jump appears to be in secondary schools where the enrolment trend is suggesting there could be 150 more students in high schools than last year, he said.

DANCE - HALTON HILLS SCHOOL OF DANCING
(Georgetown, Estab. 1981)

Principal: Mrs. Yvonne Oskaver A.R.A.D. Advanced Teachers
Cert. A.I.S.T.D. Children's Examiner for the Royal Academy of Dancing
Staff: Mrs. Lois Pastor (Modern and National) and Mrs. Debbie DeVecchio (Ballet) both are Members of the R.A.D. and are fully registered.

The school offers the Royal Academy of Dancing syllabus for young children up to the senior and major grades, and the Imperial Society of Teachers of Dancing Modern and National dances syllabi. Exams are entered each spring by most of the children from the Primary, for the very young and up to the major exams for the advanced students.

For information and brochure call 877-1581

Tyson HEALTH CARE
MEDICAL SURGICAL SUPPLIES

SUN-DREAMER

Now you can have that glamorous "just back from Florida" look that everyone admires... Always!

SEE YOU AT THE MILTON FAIR

HOURS: Mon.-Fri. 9-6
Sat. 9-3

878-8588

HOVELS & JEWELLERS

GRAND OPENING SPECIALS
NEW MILTON STORE

14K/0.50 PT. DIAMOND \$699

14K/0.25 PT. DIAMOND \$600

SOLITAIRE - 14K \$300 to \$5,000

GOLD CHAIN
10K • 14K • 18K
30% OFF

14K/0.50 PT. DIAMOND \$650

BETTY CROOKS
Betty's five years' experience in the retail jewellery business will help our new Milton customers obtain the best value and correct selection of fine jewellery.

14K/0.9 PT. DIAMOND \$210

KAREN SHERFIELD
Former manager of Cambridge Jewellers (Milton Mall) brings with her 10 years' experience in the jewellery business. Karen is looking forward to serving her friends and customers in the community.

HOVELS & JEWELLERS
CARRIAGE SQUARE
245 MAIN STREET EAST
MILTON, ONTARIO
TEL. 876-2736