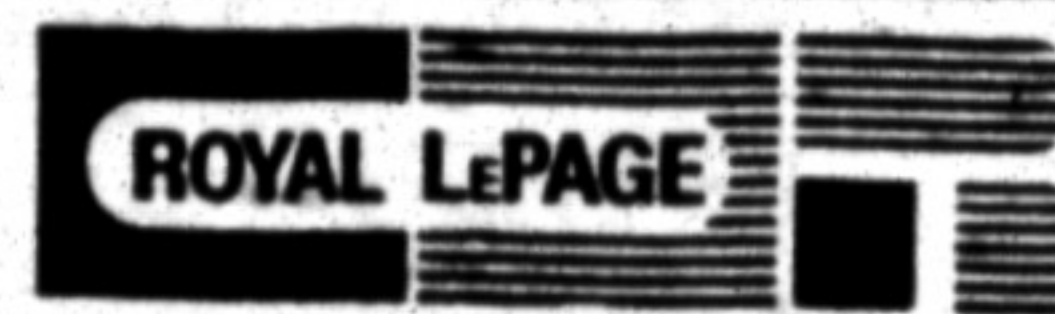




89 Ontario St. N.,
Milton
876-1156

The Canadian Champion Milton Real Estate

WEDNESDAY, APRIL 16, 1986



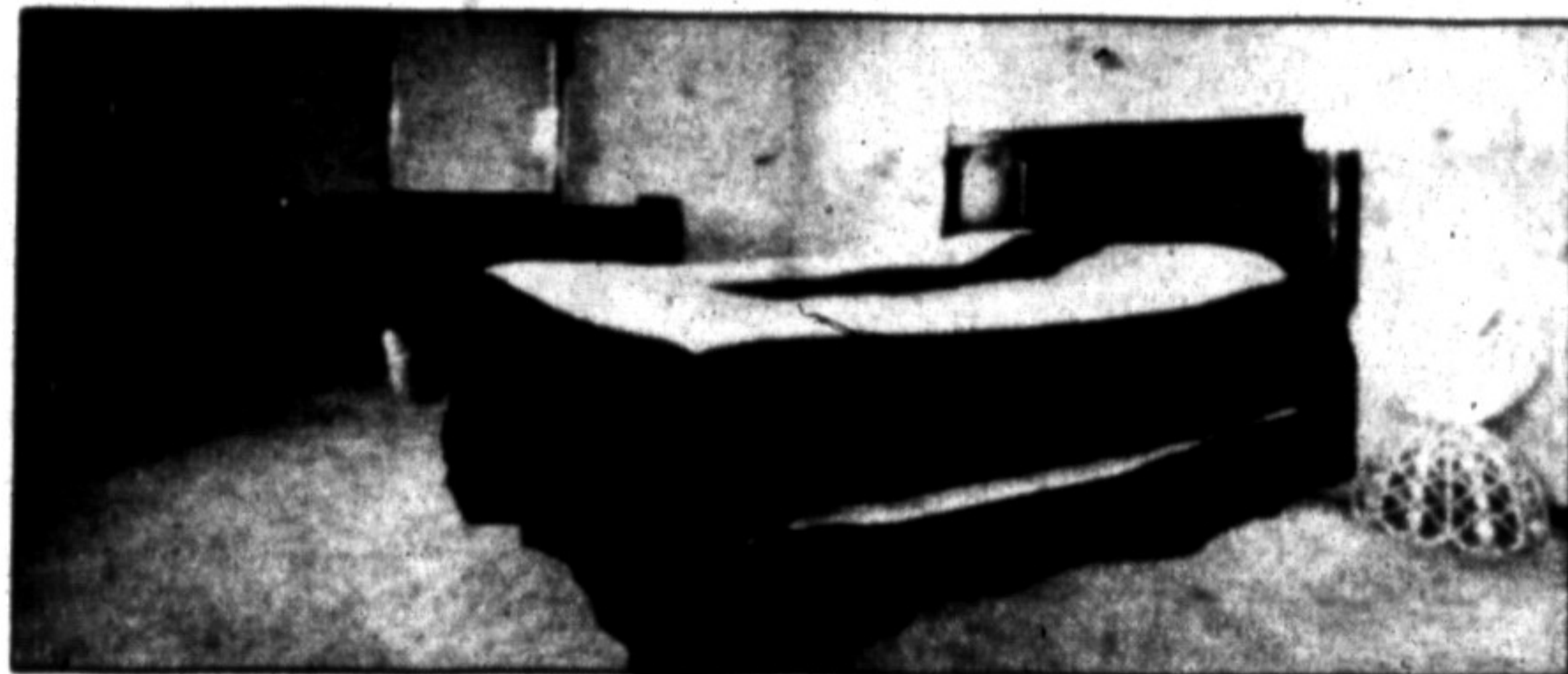
REAL ESTATE SERVICES LTD. • REALTOR
388 Main St. E., Milton

878-8101

Toronto Line 826-9218



This modern two-storey house in Timberlea has many benefits. It's within easy walking distance of schools, transportation and shopping.



The large master bedroom helps for a restful mood.



A large, bright eat-in kitchen features a walkout to a spacious 16 X 20 foot treated wooden deck to a private, secluded backyard.

COMFORT AND CHEER!

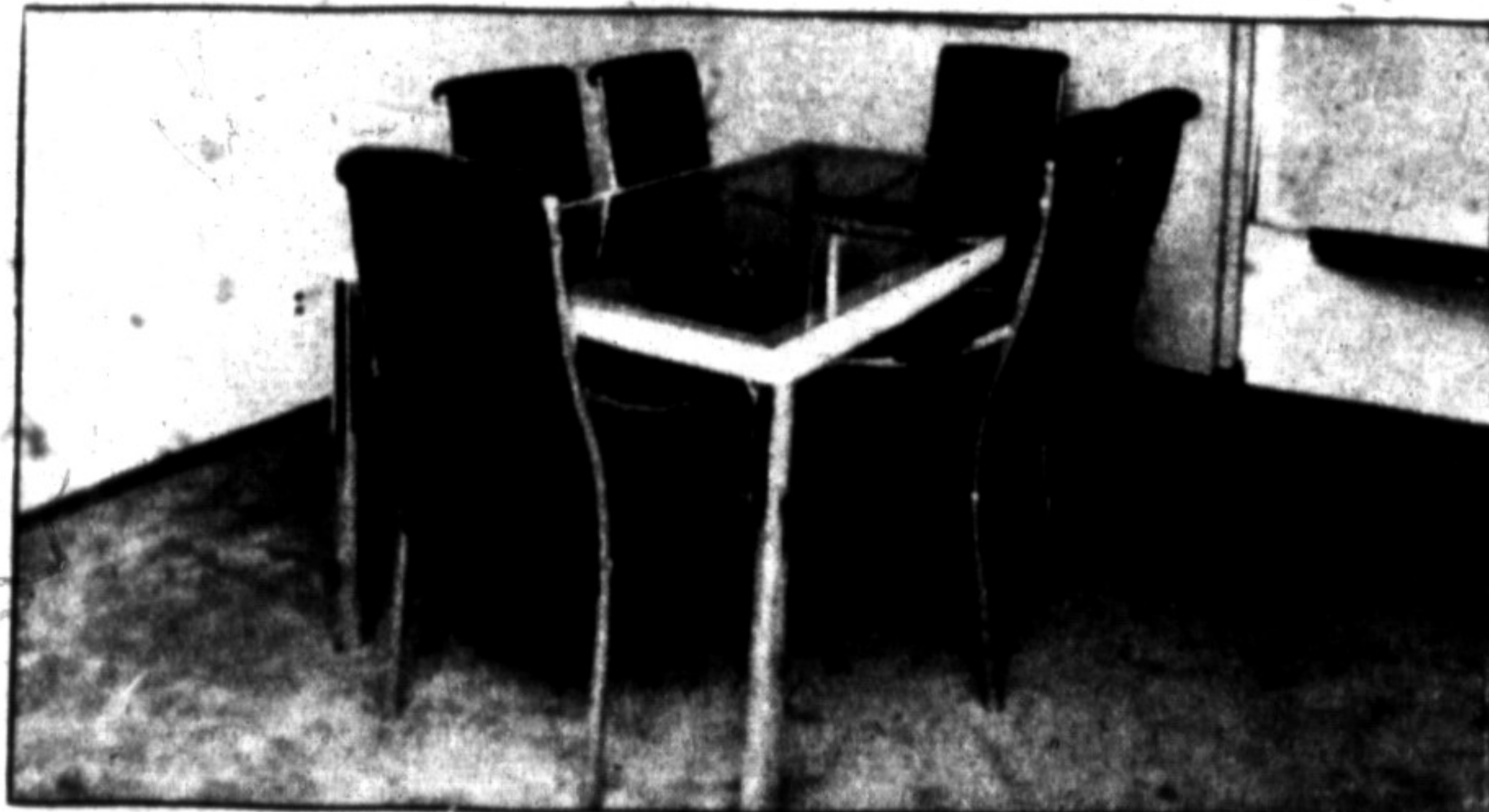
These go together in this bright and spacious family home.

It's located in lovely Timberlea, within easy walking distance of schools, transportation and shopping.

For your comfort it contains all the features that a family dreams about and needs — a large, bright eat-in kitchen with walk-out to a spacious 16'x20' treated wooden deck, to a very private, secluded and landscaped backyard. A spacious living/dining room combination awaits your guests in gracious comfort. For the youngsters it offers a completely finished and charming recreation room. And finally, a most restful master bedroom adds to your repose at the day's end.

All of these conveniences and more for only \$111,900.

For an appointment call Aina D and/or Gladys Cranford at Royal City Realty Limited, 876-1156. Toronto Area: 826-6390.



A spacious living room/dining room combination awaits your guests in gracious comfort.