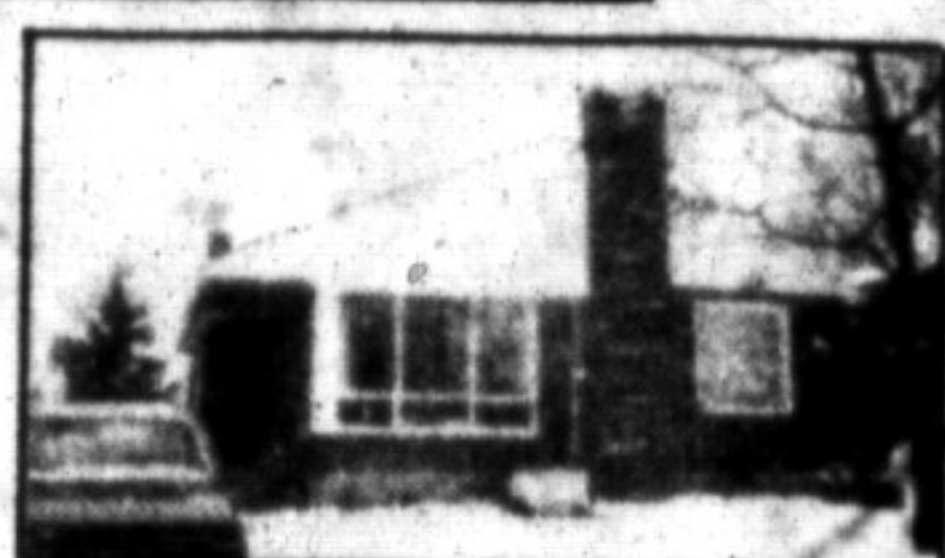


Royal LePage Real Estate Services Ltd. Realtor.



INVESTMENT BUILDING. Main St., 4 flrs., 3,000 sq. ft. on each level, suitable for offices or apartments, furniture store. Asking \$349,000. Call for all details, Stella Hall, 878-8101.



WARM YOURSELF BY THE FIRE. A hidden treasure, \$102,900. Nestled on the lower level of this 3-bdrm. bung. is a large rec. rm. with massive corner fpl. & wet bar, also new windows, cent. air, storage shed, extra insul., large lot, close to all amenities. Call Sandy Del Papa, 878-8101.



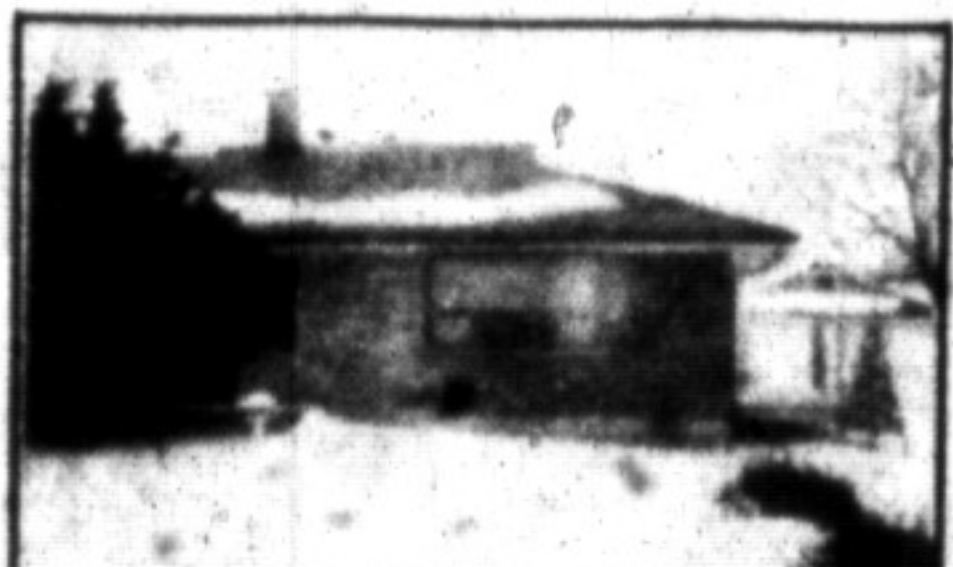
CAMPBELLVILLE VILLAGE ESTATES. \$279,900. Executive, 8-rm. home in prestige location, having 4 baths, 3 fpl. & numerous quality features (list in office) to delight a prudent buyer. For more details or for detailed inspection of property call Bill O'Neill, 878-8101.



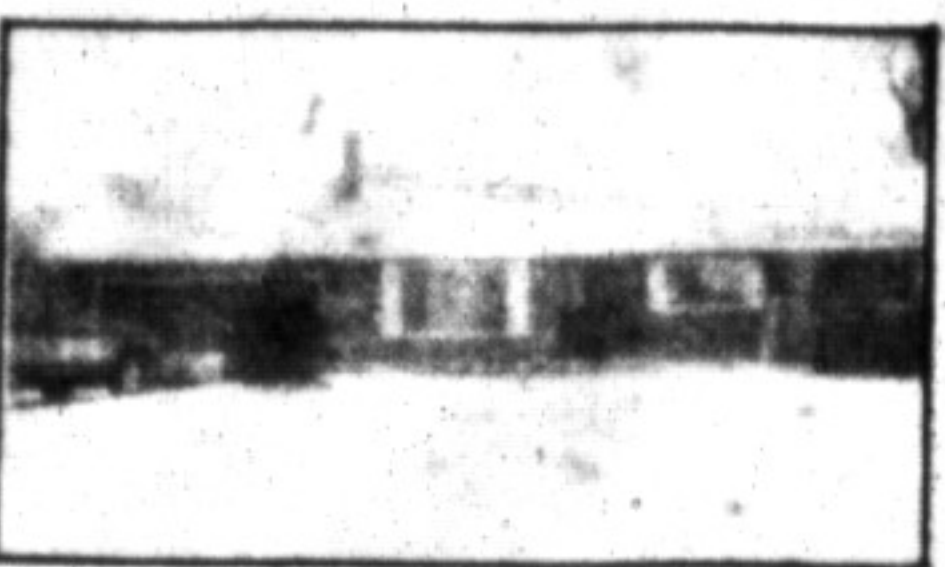
COMMERCIAL INVESTMENT. Approx. 2,000 sq. ft. on main floor and approx. 2,700 sq. ft. on lower floor, fully leased, here is a place to grow with Milton. Please call for details, Denzil Lawrence, 826-9218 or 878-8101.



JUST LISTED — FIRST OPPORTUNITY to view this 2,264 sq. ft. home, situated close to all amenities, 4 bdrms., 3 baths, featuring separate dining rm., family rm. & fireplace, greenhouse kitchen, fully fenced yard, \$137,900. Margaret Swain, 878-8101.



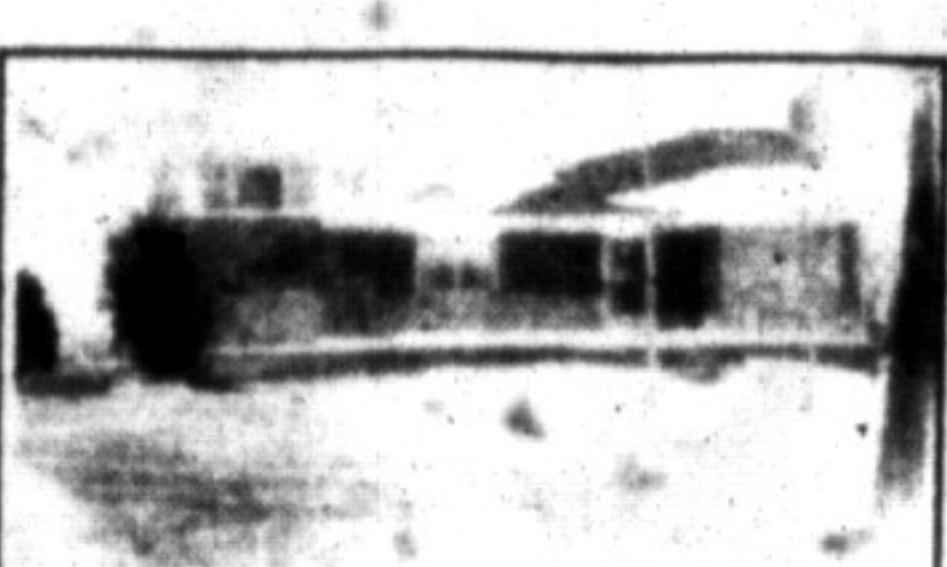
HERE TODAY! GONE TOMORROW? This super-neat brick bungalow, situated just 5 minutes to town on 3/4 of an acre. Perfect starter or retirement property. New roof, windows, & rotar in '85, fruit trees plus double gar., \$98,900. Margaret Swain, 878-8101.



AND YES, IT'S SECLUDED — yet just two minutes to 401/James Snow Pkwy. Situated on 1.5 acres, super raised ranch bung. double gar., workshop, bright basement, ideal for sep. apartment, man-made pond & stream. All for \$156,900. Margaret Swain, 878-8101.



OLD FASHIONED COMFORT — \$142,500. Brick, 2-storey on 3 acres, just outside of town with formal living rm. and fpl. as well as knotty pine fam. rm. with stove and country view. Walking distance to downtown. Call Doug Butson to view at 878-8101.



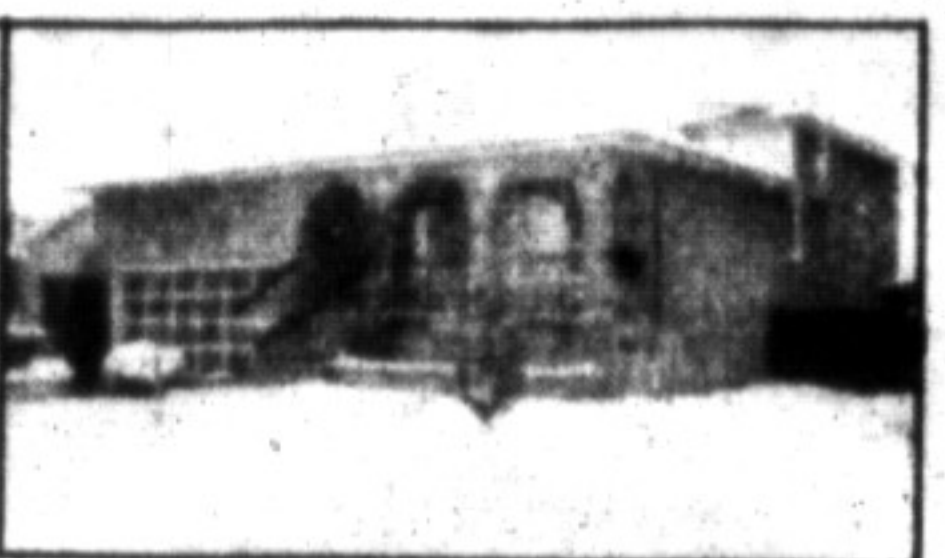
SUPER SIDESPLIT ON 1/2-ACRE. Totally finished home with 2 fireplaces, formal dining rm. and 3-plus bedrooms, rear deck overlooks flagstone patio, brick barbecue and treed lot. Asking \$137,500. Call Doug Butson, 878-8101.



IN THE COUNTRY ON 10 ACRES of privacy but close to 401 hwy. a 7-yr-old raised bungalow, 2,700 sq. ft. plus a self-contained lower apt. for in-law or office. Breezeway to 2-car garage. Lots of firewood for the huge fpl. in the living rm. Phone Rudy Arbeiter, 878-8101 for all details.



A CENTURY HOME close to the Escarpment on 50 acres of prime soil. The home is like a fairy-tale surrounded by mature trees, inground pool and a large barn for your horses. Yet just 4 miles from Milton and only \$275,000. RSVP Rudy Arbeiter, 878-8101.



NOT YOUR RUN OF THE MILL HOME during construction this brick, 3-bedroom plus den backsplit was continually upgraded and the owner who is a builder laid up the brick work. A solid well-built spotless home, asking \$152,000. Ron North, 878-8101.



PANORAMIC VIEW from every window. 10 plus rooms on 10 gorgeous acres. Property features inground pool, greenhouse, 5-car garage & 5-stall barn. A super home for all your entertaining needs. For details call Sandra Logie, 878-8101.



LOOKING FOR VALUE! 2-storey, 4-bdrm. brick home in prime location, main floor laundry, den & family room with fpl. & walk-out. Indirect lighting & extra cupboards in kitchen, spiral oak staircase. Call Sandra Logie, 878-8101.



SUPER NEW LISTING — DORSET PARK. 4-bedroom, raised bungalow boasts a great lot with inground pool, spotless home features many upgrades including cent./air, cent./vac, oak stairs & rail, ceramic tiles in kit., rec. room with wet bar. Connie Reynolds, 878-8101.

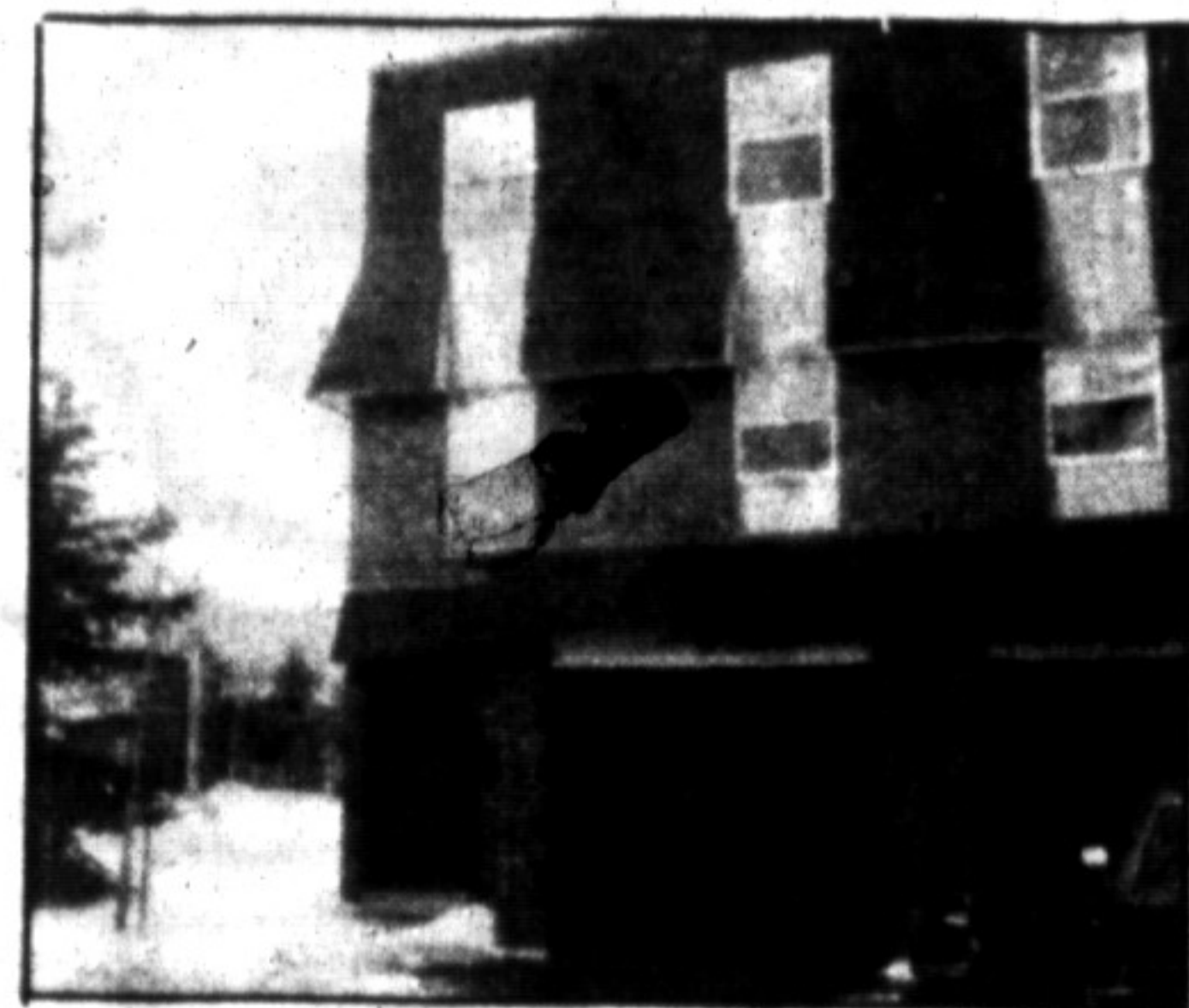
TOWNHOME SECTION

FOR RENT

Bungalow in town
3 bedrooms
fireplace
1-car garage
available July 1st.
\$800 per month, 2 yrs.
Call Les Bunker,
878-8101.

SUPER 2-ACRE BUILDING LOT

Property is high and dry with hardwood trees. An ideal location for your dream home. Well and building permit in place, asking \$65,000 but try your offer. Call for all details, Ron North, 878-8101.



WHY PAY RENT!

Own this 3-bdrm. end unit townhouse. Large living rm., separate dining rm., eat-in kitchen & 2 1/2 bathrooms. Master bdrm. has en suite & walk-in closet, move-in condition. To view call Sandra Logie, 878-8101.

GOING - GOING GOING

3-bdrm. townhouse, separate dining rm., living rm., large bright kitchen, main floor laundry rm., family rm., use of pool, good area. Please call Betty Brading, 878-8101 or 878-6716.

BACKING ONTO PARK

3-bdrm. townhouse with large patio doors overlooking park, finished family rm. with electric fpl., 1 1/2 baths. Try your offer, \$68,900. Denzil Lawrence, 878-8101.

50 ACRES

Perfect location for your mini farm or home. Excellent soil & stream, 760 ft. frontage on Guelph Line, Burlington. Asking \$149,000. Ask for Ed Proveau, 878-8101.

BACKING ON PARK

3-bdrm. townhouse with large patio doors overlooking park, finished family rm. with electric fpl., 1 1/2 baths. Try your offer, \$68,900. Denzil Lawrence, 878-8101.

"10 ACRE BUILDING LOT"

Minutes from Mohawk Race Track, over 3,000 young trees, 1st mtge. available at 11%. For all details please call Stella Hall, 878-8101.

LAMONT LEONE — MANAGER

388 Main St. E., Milton Toronto Line 826-9218 Milton 878-8101

BETTY BRADING
SYLVIA BURSEY
DENISE KERSLAKE LIZON
AUDREA LEAR-COSTIGAN
SANDRA LOGIE
RON NORTH

878-8716
878-1038
878-1735
878-9151
878-1881
834-8013

ED PROVEAU
CONNIE REYNOLDS
MARGARET SWAIN
SANDI KINSALE
BILL O'NEILL
INGE WINTNER

876-1707
876-4480
878-7687
878-0382
878-2679
853-1990

ERNIE ZAMMIT
DENZIL LAWRENCE
MURIEL DUBIEN
DOUG BUTSON
PAUL DESAULNIERS
SANDY DEL PAPA

820-3827
878-1944
878-0000
878-2000
878-1900
878-5229

DONNA SYMS
BETTE BRITAIN
CAROLE STONHILL
LES BUNKER
STELLA HALL
RUDY ARBEITER

878-3112
878-2195
878-4913
519-858-6352
878-4339
878-3558

BARBARA RUSSELL 878-3346
JEAN THOMSON 878-0767

SECRETARIES: GAYLE FORD, WENDY OLESZKOWICZ WENDY GIRARD, SHARON BEAULIEU.