

FURLONG & COLLINS
BARRISTERS & SOLICITORS

at the
Milton Mall, 2nd Floor
Milton, Ontario

HOURS: Mon.-Fri. 8:30 am-6 pm
Evenings & Sat. by
Appointment

878-8123

**PUBLIC INFORMATION CENTRE
GUELPH LINE — CAMPBELLVILLE**

No. 3 Side Road to Regional Road No. 9 South
and at Regional Road No. 9 North

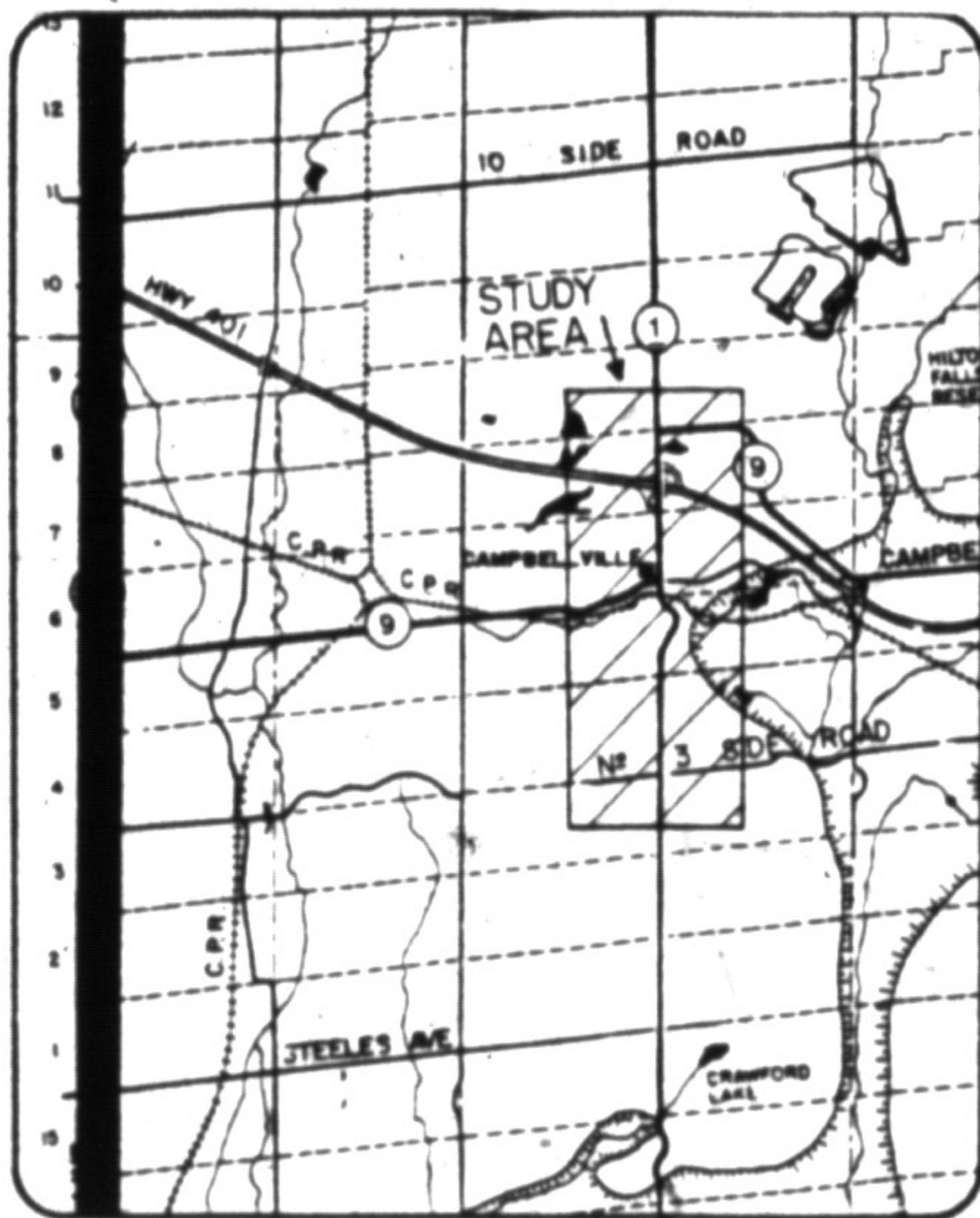
THURSDAY, FEBRUARY 20, 1986

4:00 p.m. to 9:00 p.m.

Lions Club, Campbellville

Currently the Region of Halton is undertaking a functional design study of Guelph Line in the vicinity of Campbellville. A Public Information Centre has been arranged to review the preferred alternative with area residents. The Information Centre will be an informal meeting where citizens will be able to discuss the study with representatives of the Region. This meeting is open to all interested parties. If you are unable to attend this meeting or have any questions, please contact:

Mr. T. Finelli
Public Works Department
Regional Municipality of Halton
P.O. Box 7000
2316 South Service Road West
Oakville, Ontario
L6J 6E1
827-2151



DAVID J. VARLEY
REGIONAL CLERK

THE REGIONAL MUNICIPALITY OF

Halton

REAL ESTATE

**RENT-A-HOLIC
We Have The Cure!**

- ✓ New bungalows & 2-storeys from \$81,700
- ✓ Optional 8 1/2 % mortgage
- ✓ \$2,000 deposit
- ✓ Some lots as big as 50 x 150
- ✓ Move in as late as September 1986
- ✓ Payments from \$694 monthly P.I.T.

Phone (416) 826-0094 for a free brochure and directions to our furnished models. Call Monday, Wednesday, Thursday and Friday, 1:00 pm to 8:00 pm Saturday, 10:00 am to 5:00 pm. Closed Sunday and Tuesday.

WOODCREEK HOMES



Cosy, 3-bedroom bungalow in mature part of town, large kitchen, finished basement with 4th bedroom. Basement could be used as a separate apartment. Priced at \$92,900. For more details call Tony Martens at 878-7904.

LOOKING FOR A TOWNHOUSE?
This three-bedroom model, backing onto detached homes may be just the answer at \$67,900. Call Barbara Mailleu at 878-7488.

NRS Millpond Realty Inc., Realtor
AN INDEPENDENT MEMBER BROKER
380 MAIN STREET EAST
MILTON, ONTARIO L9T 1P6
(416) 878-7764

RE/MAX Above the Crowd!
CLAYTON HACKENBROOK
878-2365 or 878-0771



Most properties are selling as fast as I list them. If you are thinking of selling, I have more purchasers in all price ranges. Call for an evaluation today, with no obligation.

I pledge efficient professional and above all, honest service.

Clayton

RE/MAX Above the Crowd!
MIKE MORGAN
878-2365
Res: 878-8093
miltowne realty corporation



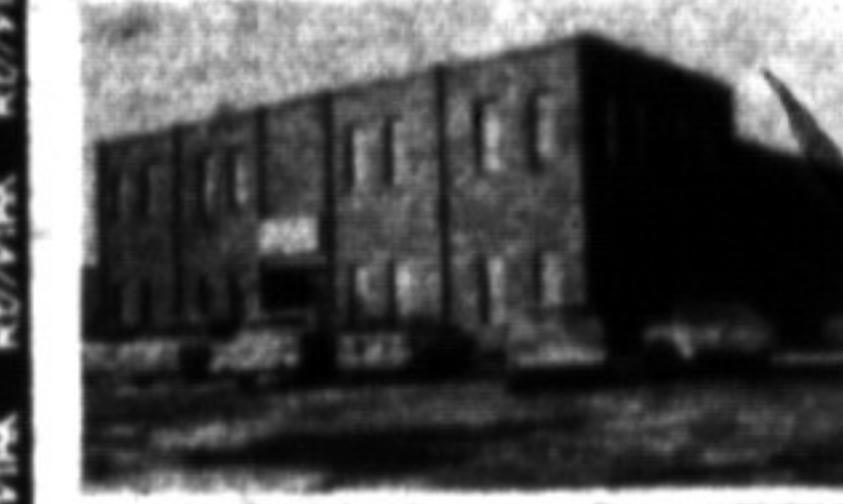
AT LAST YOU'VE FOUND IT!! It's just what your wife would order — a nicely decorated, 4-bedroom home with 3 bathrooms (including an en suite) a separate dining room, living room, fireplace with glass doors, quality broadloom and handy central vacuum system. Bring your wife over and we'll take a tour of this beauty! Make arrangements with **MIKE MORGAN** \$86,900



ESTATE SETTING Prestigious home on the face of the escarpment overlooking Milton, accessed by a private road. Quality built bi-level brick home with approx. 2,000 sq. ft. per level, has neutral tones and luxury features including natural stone fireplaces, walk-outs to cedar decks, whirlpool bath in master, central vac., heat pump and MUCH, MUCH, MORE!! Call **MIKE MORGAN** \$258,900



INSTANTLY APPEALING!! because it's a very spacious home in a fine area and has all the features your family desires: 3 bedrooms plus den, 3 full bathrooms, family room with walk-out and fireplace, rec. rm. with bar, huge kitchen with dishwasher and much more. Ask for a viewing with **MIKE MORGAN** \$147,900



FOR LEASE, 3,900 sq. ft. of finished office space with 2,700 sq. ft. warehouse space. Fronting on Main Street in Milton, across from the GO Station. For more information, please call **MIKE MORGAN**

RE/MAX Above the Crowd!
CALL LORRAINE RANDALL
Bus: 878-2365 Pager 1-553-8573
Res: 878-7101
95% OF ALL MY LISTINGS HAVE SOLD FOR 1983, 1984, 1985 & 1986 (THROUGH M.L.S.)

LISTINGS WANTED!!
Prices & demand are excellent now FOR PERSONAL COMPLIMENTARY CONSULTATION
Please call & ask for **LORRAINE RANDALL**

SOLD **250 SATOK NO. 20** THROUGH M.L.S.
and I have clients waiting to purchase:

TOWNHOUSES — Childs Dr. or 341 Wilson
SEMI-DETACHED — to \$90,000
MATURE OLDER HOME — to \$95,000
DORSET PARK
— split level or 2-storey to \$ 95,000
— split level or 2-storey to \$130,000
TIMBERLEA — split level or 2-storey to \$120,000
COUNTRY — prefer small bungalow to \$95,000

NO MAGIC — JUST CARE

BUYER WAITING!