

388 MAIN ST. EAST
878-8101 (TOR) 826-9218

ROYAL LEPAGE

388 MAIN ST. EAST
878-8101 (TOR) 826-9218

RE3 The Canadian Champion, Wed., February 12, 1986

Royal LePage Real Estate Services Ltd. Realtor.



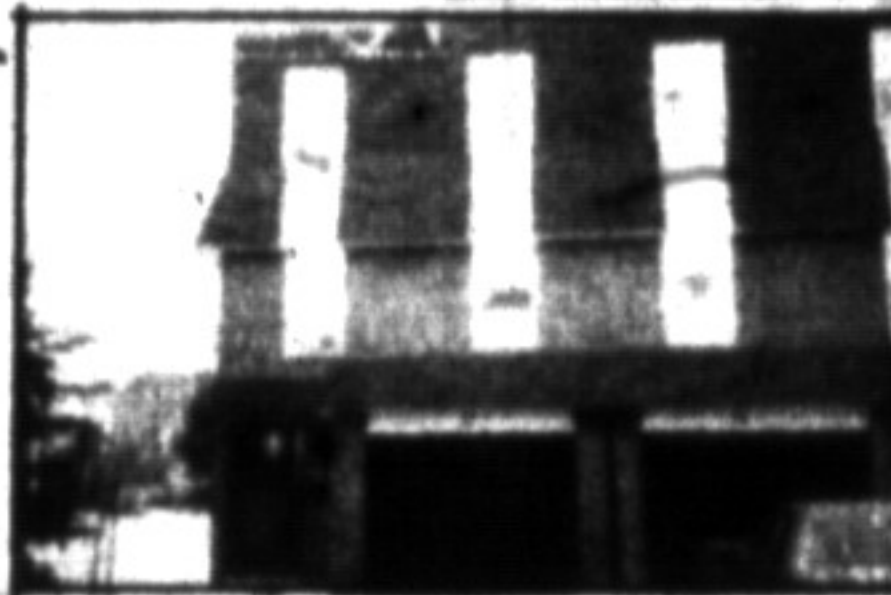
A HIDDEN TREASURE Nestled on the lower-level of this 3-bdrm. bung. is a lrg. rec. rm. with massive corner F.P. & wet bar. Also new windows, cent. air, storage shed, extra insul. Lrg. lot close to all amenities. Call Sandy Del Papa, 878-8101.



HOME WITH IN-LAW APARTMENT This home boasts of its three-story l.p., its area which could be used for life-in help, plus apt. for your in-laws, inground pool, 2 cedar decks, plus a brick patio, on a nice 10 acres. Please call Denzil Lawrence, 826-9218, 878-8101.



COZY AND COMFORTABLE 3-bdrm., 1½-storey older home, 1½ baths, two f.p., new broadloom, single garage, paved drive, well-treed large lot. Priced to sell at \$99,900. Denzil Lawrence, 878-8101.



NEW LISTING! 3-bdrm. Townhouse, master has en suite & walk-in closet. Eat-in kitchen, plus separate dining room, 2½ bathrooms. This is an end unit that backs onto detached homes. Very clean. \$69,900. Sandra Logie, 878-8101.



BEAUTY & THE BEST! 4-bdrm., 2-storey executive brick home on pool-size lot in prime location. Main-floor den, plus family rm. with f.p. & walk-out. Many upgrades throughout. To view call Sandra Logie, 878-8101.



MINI FARM NEAR TOWN. Duplex home, 2 kitchens, 2 baths, 6 bdrms., large family rm., large red barn, 28'x60', steel shed, 7 acres of land, lots of mature trees. There is lots more, call for details. Listing at \$219,900. Denzil Lawrence, 826-9218 or 878-8101.



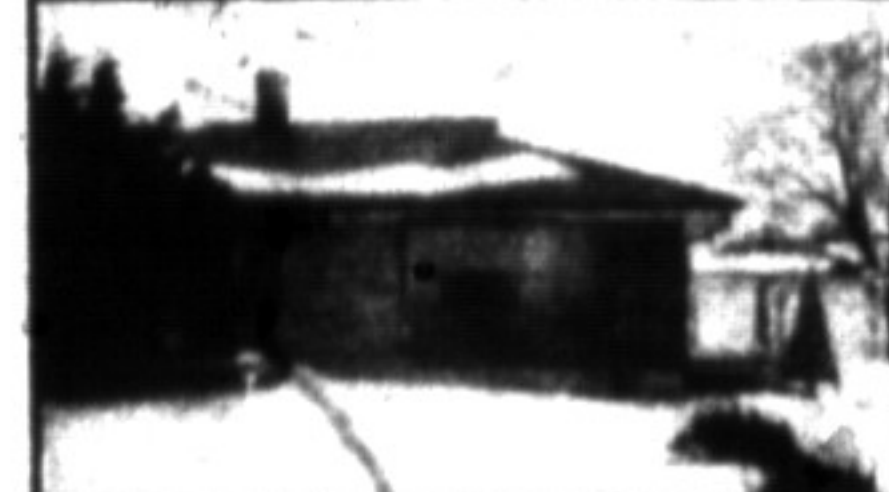
A COUNTRY PLACE — 50 ACRES — A charming original stone farm house just 4 miles from Milton. Beautifully restored. An inground pool, a 34x102 ft. solid barn and driving shed. Seclusion and privacy. Phone Rudy Arbeiter, 878-8101 to view this fine property.



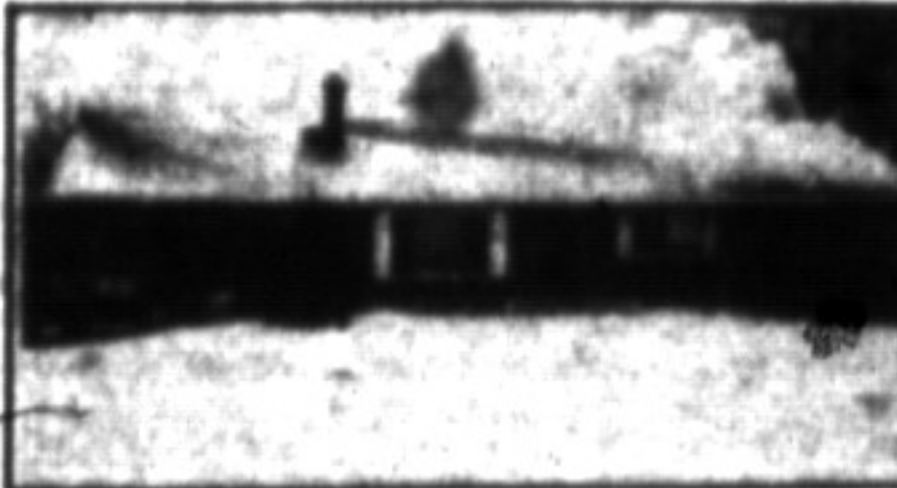
A VERY ATTRACTIVE COUNTRY PROPERTY on 10 ac. a few miles from 401 Hwy. Custom built, 2,700 sq. ft. open concept design, plus an apt. on lower-level, breezeway to double garage. Just a beautiful country retreat. Rudy Arbeiter will furnish all details, 878-8101.



COUNTRY HOME ON MAIN ST. Park-like lot, 145x900 sheltered by tall spruce and maple — mature brick/alum., 2-storey with main-floor pine family rm., 2 fireplaces, beautiful knotty pine kitchen. Asking \$142,500. Call Doug Butson for details.



FIRST TIME OFFERED — This super immaculate brick bungalow is situated just 5 minutes to town on ¼ of an acre. Ideal starter or retirement property, new roof & windows in '85, fruit trees, dbie. gar. Don't delay — \$98,900. Margaret Swain, 878-7687.



AND YES, IT'S SECLUDED Yet just two minutes to 401-James Snow Pkwy., situated on 1.5 acres, super raised ranch bung., dbie. gar., workshop, bright basement. Ideal for sep. apartment, main-made pond & stream. All for \$156,900. Margaret Swain, 878-8101.



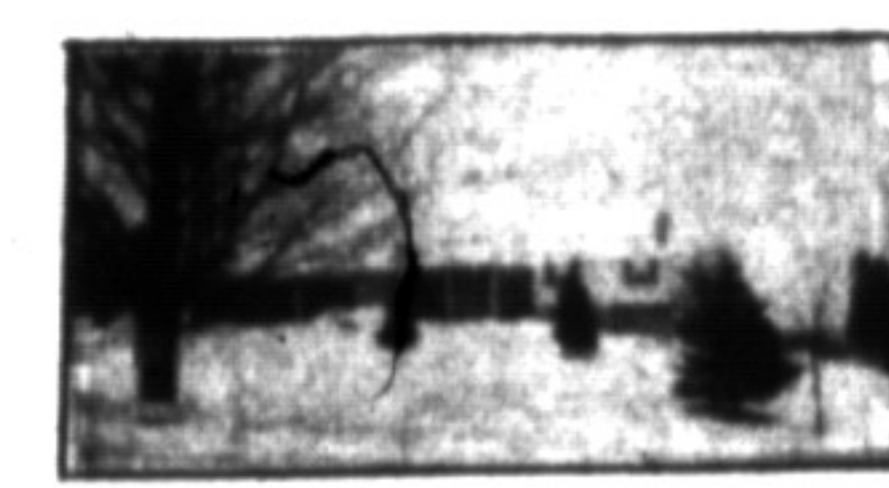
PRESTIGE FAMILY HOME — 4-bdrm., 2-storey brick/cedar features den, cedar screened porch. Overlooks lovely Yalmar Pool — treed park-like setting — large rec. rm. \$169,900. Contact Audrea Lear-Costigan, 878-8101.



"INVESTMENT BUILDING" MAIN ST. 4 floors, 3,000 sq. ft. on each level, suitable for offices, apartments, furniture store, asking \$349,000. Call for all details, Stella Hall, 878-8101.



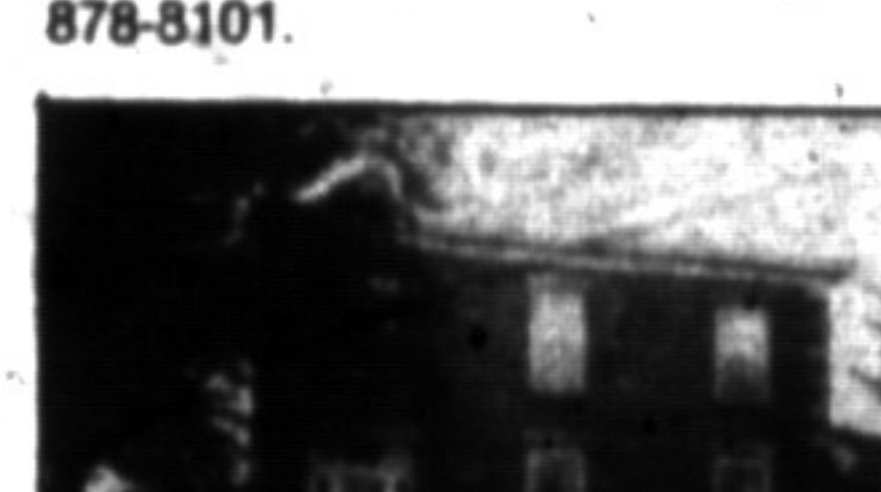
PRIVACY & SECLUSION Executive country estate on 8 scenic acres with picturesque Limestone Creek, 4 bdrms., 2 fpls., Jacuzzi, country kitchen plus numerous high quality extras. To view call Bette Brittain, 878-8101.



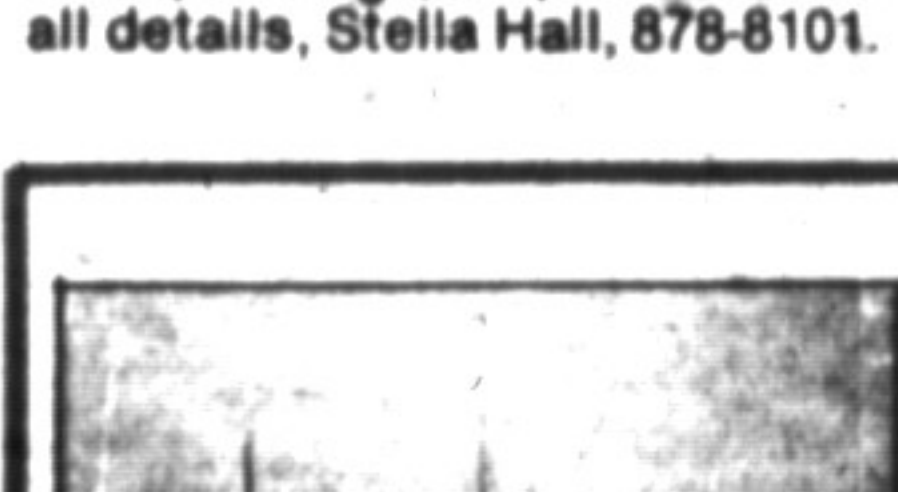
THE COUNTRY HORSEMAN. Beautiful, 18-acre setting with raised ranch home. Sun room with Jacuzzi & walk-out to pool & tennis court. 60'x40' barn with 10 stalls & paddocks. Close to 401. \$224,900. Call Ed Proveau, 878-8101.



AN INVITATION TO THE DISCRIMINATING. Executive 10 plus rooms on 10 beautiful acres. Super for entertaining, inground pool, 5-car garage, 5-stall barn. To view call Sandra Logie, 878-8101.



WHAT A SPOT TO BE IN! \$214,900. 5 prime acres on edge of Milton. Century brick home in excellent condition on town water, 2 fruit orchards, 5 bedrooms, 3 baths, small barn with fenced paddock. Call Sandi Kinsale, 878-8101.



OPEN HOUSE

SUNDAY FEB. 16th.

2 pm - 4:30 pm

314 KINGSWAY PLACE

Price \$141,900

Sylvia Busey in attendance.

878-8101



CAMPBELLVILLE VILLAGE ESTATES \$279,900. Executive 8-rm. home in prestige location, having 4 baths, 3 fpl. & numerous quality features (list in office) to delight a prudent buyer. For more details or for detailed inspection of property call Bill O'Neill, 878-8101.



AFFORDABLE COUNTRY. Charming bungalow, built to last, set on a treed, ½-acre lot, only minutes from Milton. Listed at \$98,900. To view call Ernie Zammit, 878-8101.

"10-ACRE BUILDING LOT" Minutes from Mohawk Race Track, over 3,000 young trees, 1st mortgage available at 11%. For all details call Stella Hall, 878-8101.

TOWNHOUSE. 3-bdrm., 1½ baths, finished family rm. with elec. fpl., this home has large patio doors overlooking the park. \$68,900. Please call Denzil Lawrence, 878-8101.

HURRY — HURRY — NEW LISTING. 3-bdrm. townhouse, separate dining rm., living rm., bright kitchen, main floor laundry rm., walk-out to a private patio. Good area, won't last long. Call Betty Brading, 878-8101 or 878-6716.

TORONTO CORE INVESTMENT. A well-kept, 12 unit apartment building with a good return and potential for more. Located in an upgraded area, minutes from downtown. For more information contact Ernie Zammit, 878-8101.

COMMERCIAL INVESTMENT

Approx. 2,000 sq. ft. on main-floor and approx. 2,700 sq. ft. on lower-floor, fully leased. Here is a place to grow with Milton. Please call for details. Denzil Lawrence, 826-9218 or 878-8101.

LAMONT LEONE — MANAGER 388 Main St. E., Milton Toronto Line 826-9218 Milton 878-8101

BETTY BRADING 878-6716
SYLVIA BURSEY 878-1038
DENISE KERSLAKE LIZON 878-1735
AUDREA LEAR-COSTIGAN 878-8151
SANDRA LOGIE 878-1881
RON NORTH 634-8013

ED PROVEAU 878-1797
CONNIE REYNOLDS 878-4480
MARGARET SWAIN 878-7687
SANDI KINSALE 878-0392
BILL O'NEILL 878-2679
INGE WINTNER 853-1990

ERNIE ZAMMIT 820-3827
DENZIL LAWRENCE 878-1944
MURIEL DUBIEN 878-0067
DOUG BUTSON 878-2054
PAUL DESAULNIERS 878-1500
SANDY DEL PAPA 878-5229

DONNA SYMS 878-3112
BETTE BRITTAIN 878-2195
CAROLE STONHILL 878-4913
LES BUNKER 519-856-4352
STELLA HALL 878-4339
RUDY ARBEITER 878-3558

BARBARA RUSSELL 878-3346
JEAN THOMSON 878-0787

SECRETARIES: GAYLE FORD, WENDY OLESZKOWICZ WENDY GIRARD, SHARON BEAULIEU.