

388 MAIN ST. EAST
878-8101 (TOR) 826-9218

ROYAL LEPAGE

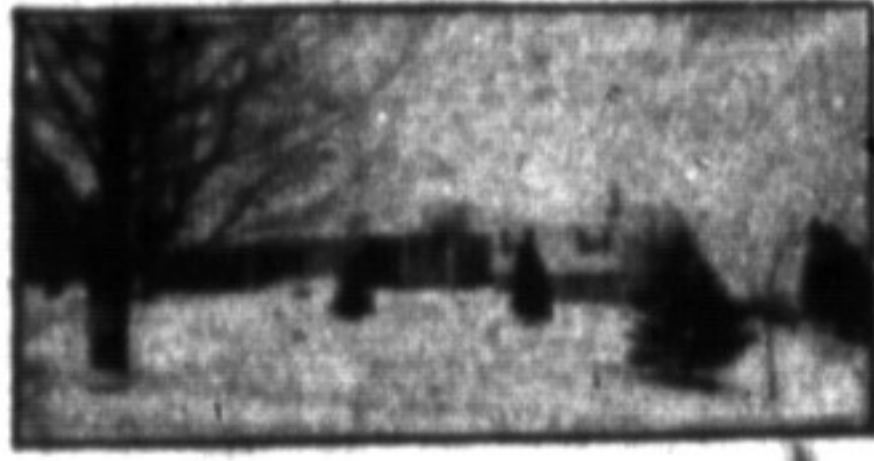
Royal LePage Real Estate Services Ltd. Realtor.

388 MAIN ST. EAST
878-8101 (TOR) 826-9218

RE3 The Canadian Champion, Wed., February 5, 1986



IN A VERY PRETTY SPOT will you find this 7-yr. old raised bungalow on 10 acres. 2,700 sq. ft. on main level, and a nice apt. on lower level, breezeway to two-car garage. It is vacant for your immediate possession. Phone Rudy Arbeiter for all details, 878-8101.



HORSE FARM WITH THE TRIMMINGS. Beautiful, 18-acre setting with raised ranch home. Sun room with Jacuzzi & walk-out to pool & tennis court. 60x40' barn with 10 stalls & paddocks. Close to 401. \$224,900. Call Ed Proveau, 878-8101.



LESS THAN 4 MILES FROM MILTON stands this fine home on 50 acres. Completely restored to its original beauty. A solid barn for your horses, an inground pool for your summer enjoyment. \$299,900. View this exceptional property with Rudy Arbeiter, 878-8101.



BEEF OR HOG OPERATION OR BOTH. Just a few miles from Milton, a 108-acre farm of excellent soil, a fine farmhouse and farm buildings. Plentiful water and farm completely fenced. Contact Rudy Arbeiter, 878-8101 for all details of this property.



MINI FARM NEAR TOWN. Duplex home, 2 kitchens, 2 baths, 6 bdms., large family rm., large red barn, 28'x60; steel shed, 7 acres of land, lots of mature trees. There is lots more, call for details. Listing at \$219,900. Denzil Lawrence, 826-9218 or 878-8101.



COMMERCIAL INVESTMENT. Approx. 2,000 sq. ft. on main floor and approx. 2,700 sq. ft. on lower floor, fully leased. Here is a place to grow with Milton. Please call for details. Denzil Lawrence, 826-9218 or 878-8101.



KINGSWAY PLACE — \$148,900. Large, 5-level backsplit, 4 bedrooms, den, family room with fpl., w/out, main flr. laundry, 3 baths, fpl. in lower basement, super location. Call Sylvia Bursey, 878-8101, Tor: 826-9218.



CAMPBELLVILLE VILLAGE ESTATES. \$279,900. Executive, 8-rm. home in prestige location, having 4 baths, 3 fpl. & numerous quality features (list in office) to delight a prudent buyer. For more details or for detailed inspection of property call Bill O'Neill, 878-8101.



BACKSPLIT WITH 1/2 POOL. Charming 3-bdrm. home in quiet count; finished basement with 4-pce. bath & w/o to pool; fenced yard; paved patio; driveway lights. Price, \$104,500. For more information or to inspect ask for Bill O'Neill, 878-8101.



ENTERTAIN WITH EASE! \$199,900. Spacious 3-bdrm. custom-built Tudor sidesplit, boasts huge foyer, large l.r. with fpl., d.r., country kitchen with centre island, mn. flr. fam. room with fpl., 2.5 baths, unfinished loft. Lot 200'x400'. Connie Reynolds, 878-8101.



VICTORIAN CHARM! Elegance plus comfort are the main attractions of this 5-bedroom, 3-bath home, located on 5 1/2 acres within walking distance of shopping. Home completely updated. Call Sandy Kinsale to view.



A HIDDEN TREASURE — \$102,900. Warm yourself by the fire, nestled on the lower level of this 3-bdrm. bung. is a large rec. rm. with massive corner fpl. & wet bar, also new windows, cent. air, storage shed, extra insul., large lot, close to all amenities. Call Sandy Del Papa, 878-8101.



BRIGHT & SPACIOUS! Executive upgraded, 4-bdrm. home in top area, main floor family rm., den & laundry, large eat-in kitchen has separate work area, indirect lighting & extra cupboards, plus more. Sandra Logie, 878-8101.



4 BDRMS. — POOL — BACKS ONTO PARK — \$118,000. What more could you ask for? This beauty features an 18'x40' lazy "L" pool, a park setting at your back fence, large deck off kitchen overlooking pool, large rec. rm., workshop & laundry room, double car garage. Sandy Del Papa, 878-8101.



A RARE OPPORTUNITY — Two mins. to 401/James Snow Pkwy. So close to town but situated on a picturesque 1.5 acres. Man made pond & stream. Basement could be self-contained apartment, double garage, plus workshop. \$156,900. Margaret Swain, 878-8101.



"INVESTMENT BUILDING" MAIN ST. 4 floors, 3,000 sq. ft. on each level, suitable for offices, apartments, furniture, storage, asking \$349,000. Please call Stella Hall, 878-8101.



PRIVACY & SECLUSION. Executive country estate on 8 scenic acres with picturesque Limestone creek, 4 bdms., 2 fpls., Jacuzzi, country kitchen plus numerous high-quality extras. To view call Bette Brittain, 878-8101.



COUNTRY BUNGALOW. 3-bdrm., all-brick, 1 1/2 baths, main floor laundry, super large kitchen with patio doors to large deck, full basement, mostly finished with fpl. All this and more on 1/2-acre lot, asking \$139,900. Denzil Lawrence, 826-9218.



CHARMING 2-STOREY — ONE OWNER \$97,500. Very well kept and decorated with neutral colors throughout and featuring picture window in living rm., sep. dining rm., large master with dressing rm., central air, privacy fence etc. Inge Winther, 878-8101.



UPGRADED CONSTRUCTION Spotless brick home with 3 bedrooms plus den, eat-in kitchen, elegant living/dining room and huge family room with open fireplace. Owner is a builder and worked on this home himself. \$152,000. Ron North, 878-8101.

BUILD THIS SPRING

50 acres with 750 ft. frontage on Guelph Line. Small stream & excellent soil, perfect location for home or horse farm. Call Ed Proveau, 878-8101.

"10 ACRE BUILDING LOT"

Minutes from Mohawk Race Track, over 3,000 young trees. 1st mortgage at 11% for all details call Stella Hall, 878-8101.

"VACANT LOT"

\$26,900. Building lot in quiet village setting. 66'x133'. For further details call Bette Brittain.

LAND LOTS OF LAND

84 acres cleared land in Campbellville. Building permit available. For details call Sandra Logie, 878-8101.

WANTED...

Tudor-style, raised bungalow, 4 bedrooms preferred or 3 with room in basement. If this is your home and you are thinking of selling give me a call, I have a firm buyer with May 30th closing. Call Sylvia Bursey, 878-8101.

50 ACRE RETREAT \$27,900

Located approximately 2 hr. drive northwest of Milton. Has a 15'x18' cabin & ever-flowing stream on property. For directions call Sylvia Bursey, 878-8101.

LAMONT LEONE — MANAGER 388 Main St. E., Milton Toronto Line 826-9218 Milton 878-8101

BETTY BRADING
 SYLVIA BURSEY
 DENISE KERSLAKE LIZON
 AUDREA LEAR-COSTIGAN
 SANDRA LOGIE
 RON NORTH

878-8718
 878-1038
 878-1735
 878-9151
 878-1881
 834-8013

ED PROVEAU
 CONNIE REYNOLDS
 MARGARET SWAIN
 SANDI KINSALE
 BILL O'NEILL
 INGE WINNER

878-1707
 878-4480
 878-7887
 878-0392
 878-2678
 853-1990

ERNE ZAMMIT
 DENZIL LAWRENCE
 MURIEL DUBIEN
 DOUG BUIYON
 PAUL DESAULNIERS
 SANDY DEL PAPA

820-3827
 878-1944
 878-0067
 878-2054
 878-1500
 878-5229

DONNA SYMS
 BETTE BRITTAIN
 CAROLE STONHILL
 LESBUNKER
 STELLA HALL
 RUDY ARBETER

878-3112
 878-2195
 878-4913
 519-856-4352
 878-4339
 878-3558

BARBARA RUSSELL 878-3348
 JEAN THOMSON 878-0767

SECRETARIES: GAYLE FORD, WENDY OLESZKOWICZ, WENDY GIRARD, SHARON BEAULIEU