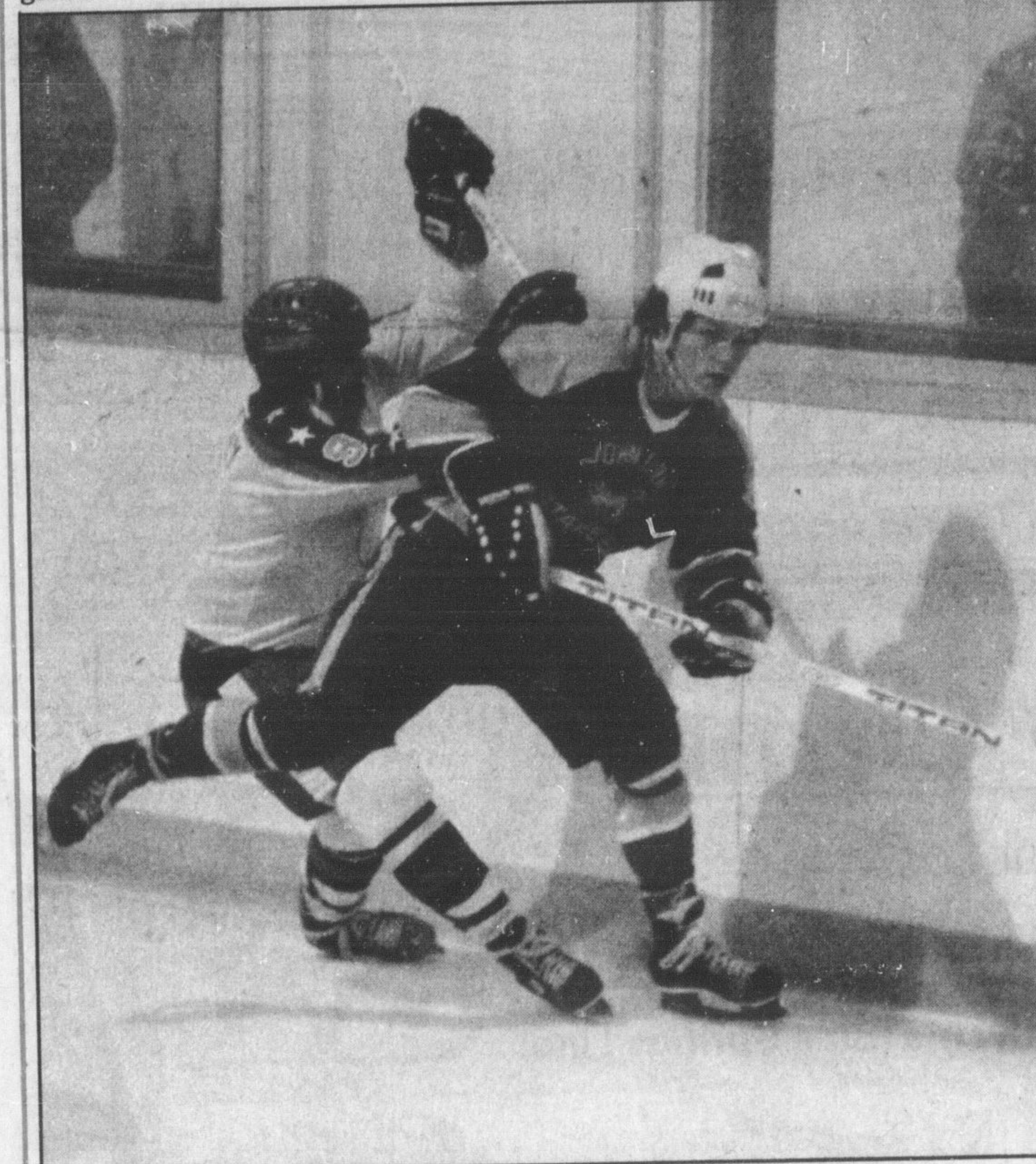




Catching a good check from Burns Stable's Derek Griffiths (right) is The Edge's Eric Ellison. The speedy centre almost won the game for Racer's when he made a heads-up play to come around the net and score to put The Edge ahead late in the game.



Somehow, Burns' captain Jay Norland managed to get the puck around the side and away from Al Fritzeley who pursued him and every Burns player all night. Norland scored the winner when he moved in from his left point on the power play and drove a wrist shot home.

Burns hands The Edge first loss in 8 games

Jay Norland flicked home a wrist shot with just one minute left in the game to give John Burns Stable a 5-4 win over The Racer's Edge which stopped The Edge's winning string at seven consecutive games in Milton Industrial Hockey League action Sunday at Milton Sports Centre.

It was the game everyone associated with the league was waiting for and they were rewarded with some of the most entertaining and exciting hockey played in Milton at either arena all year.

In a classic confrontation between the two teams, which tied for first in the league and met in the finals with the Edge coming out ahead last year, Burns entered the game as clear underdogs. Their present 5-3 record has been made courtesy of winning four of their past five games.

The Edge has been invincible this year, often coasting throughout much of the games before clinching them with a quick outburst.

The contest featured something of everything. After a fast first period, the teams settled back into a slow second period before unleashing a flurry of goals and some exciting hockey in the final frame.

Midway through the opening period, The Racer's Edge got on the scoreboard first when captain Dave McKee, on a two-on-one with Larry Scott, put a perfect pass onto Scott's stick just inside the blue line. Scott's wrist shot just eluded Burns' goalkeeper Phil Bailey for a power-play goal.

A couple of minutes after the goal, Bailey was hit on the shoulder by a blistering slapshot from the point which sent him to the ice in a heap. After laying on the ice for several minutes in obvious pain, Barley returned to his spot between the pipes.

The Edge dominated most of the opening 10 minutes of action with Bailey called upon several times to come up with good saves. JB Stable was limited to just a couple of good scoring chances which both came in the final minute of play. Stable's John Hellyer had the best chance bouncing a shot off the goal post.

Racer's Edge continued to dominate the second period. Right winger Peter McCuaig hit speedy Eric Ellison with a perfect pass which put the MHL's scoring leader alone on a breakaway but Ellison shot wide.

Moments later, Bailey came up with a great save off Scott whose backhand shot came from directly in front of the net.

After blowing a power-play opportunity earlier in the period, Burns got the equalizer on a surprise play. With The Edge applying tremendous pressure in the Burns' end, Randy Coulson picked up a loose puck and fed Buddy Thomas who was breaking up the right side. Thomas unleashed a blistering slapshot from 20 feet out which handcuffed goalie Dave Ballard on the near side. The goal, with two minutes remaining in the period, sent both teams into the third tied at 1-1.

Then the excitement started. JB Stable took the lead for the first time in the game one minute into the final frame. Winger Doug Thomson alertly picked up a loose puck in the corner of The Edge's zone. Skating behind the net, Thomson spotted Thomas in front of the goal and in a bang-bang play, passed to Thomas who redirected it into the goal.

The Edge received some good luck on their tying goal two minutes later. From behind the net, Ellison's pass in front deflected off Thomas behind a startled Bailey for a power-play marker.

With just under 10 minutes to play in the game, Racer defenceman Brett Patterson intercepted a weak Burns' clearing pass at the JB Stable blue line and beat Bailey with a slapshot along the ice to glove side restoring The Edge's lead to 3-2.

The quick pace of the game continued with good saves by Ballard (off a Thomas slapshot) and Bailey (robbing Ellison from close in).

After Bailey made his key save, JB Stable marched up ice and with a good three-way passing play, Hellyer scored the tying goal with a wrist shot which found its way through a maze of players.

Ellison then put The Edge back in front stealing the puck from behind the net and coming in front beating Bailey with a backhand flip which trickled through Bailey's pads and into the goal

with 3:54 to play.

With Bob McKee serving a holding penalty, Burns tied the score once again. Racer penalty-killer Richard Murray put on some good hustle to force Derek Griffiths at the right point to cough up the puck over the Racer blue line.

With Ellison hounding him, Griffiths regained control of the puck, deked his way over the blue line and set up Thomas alone in front of Ballard. Thomas moved from his forehead to his backhand in putting a move on Ballard before tucking it into the goal with just 2:45 to play.

The key mistake occurred exactly one minute later when Griffiths was moving over the blue line and into the Edge's territory. Patterson broke his stick in half over Griffiths with a slash which was duly noted by the officiating staff.

Just 33 seconds later, Kevin Howden and Coulson set up Norland who was moving in from the left point on the power play. Norland's wrist shot from 20 feet beat Ballard cleanly.

The Edge wasn't done yet and Richard Murray almost scored the equalizer with 27 seconds left in the game deflecting a shot from the point which hit Bailey.

In other games, Straight Line bounced back from a three-goal disadvantage to post a 6-5 win over Miltowne Realty Majors while Milton Chrysler-Dodge's unbeaten string moved to three games with a 3-3 tie with Lou's Place Hawks.

Miltowne started with a vengeance rolling up a 3-0 lead after one period of play and maintained a 4-2 lead after two periods.

However, Straight Line bounced back to tie the score at five apiece with three minutes left and then scored the winner with just 39 seconds left on the clock to steal the victory.

Chuck Alcock scored the winner on a scramble from in front of the net. Harry Rowland led the Fencers with two goals and two assists while Len Smith, Bill Chapman, Brad Nadalin and Alcock added singles.

Ray Delegrade paced the Miltowne attack with two goals. Singles went to Brian Nowak, Paul Stanfield and John Volpe. Doug Stanford had two assists.

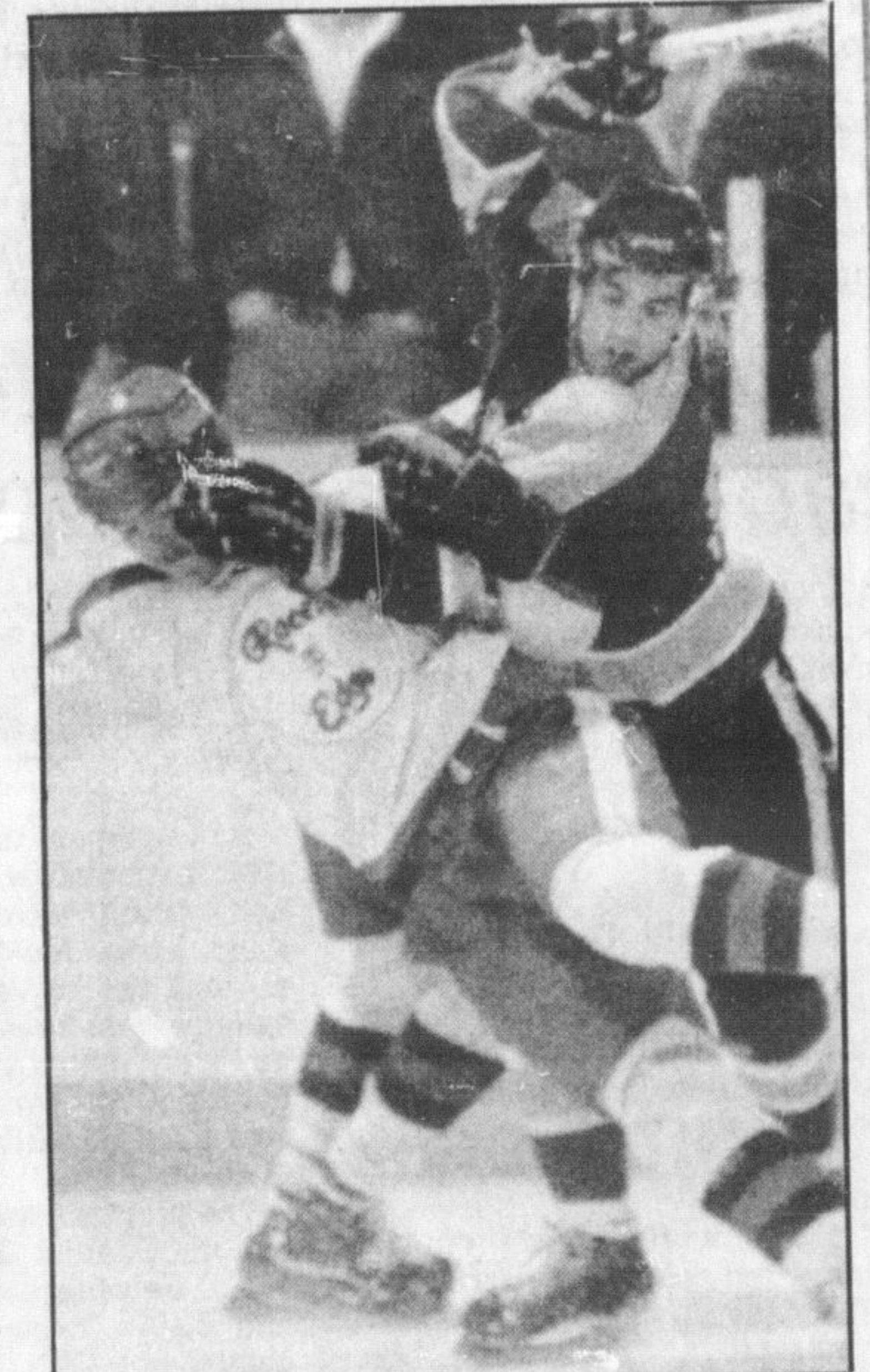
In the opening game of the night, Gord Adams scored another late goal in the game, this time with 54 seconds left, to pull Lou's Place into the draw with Milton Chrysler-Dodge. Tony

Tielemans was serving four minutes in penalties at the time for Chrysler.

Chrysler led 1-0, 2-1 and 3-2 only to see Lou's Place battle back to even the score. The result put each team's league record at 2-4-2.

Newly acquired Roger Delnin was the big gun for Chrysler with two goals and an assist while Peter Rota chipped in with a single.

Guy McGinnis potted two for Lou's Place and added an assist on Adams' goal.



The Edge's Brent Murray goes for a spill over on the far boards in front of an unidentified Burns' player.



Excuse me. The Edge's Bob McKee does a pirouette in front of Dave Marshall. Burns bounced back with three goals from Buddy Thomas to hand The Edge its first loss in eight starts in one of the most entertaining games seen at the Laurier Ave. arena this year.

Cindy Brown teaching

Skating instruction available

CALLING ALL hockey players. Milton Minor Hockey Association will hold power skating sessions during the Christmas break with house-league players in mind.

Popular skating instructor Cindy Brown will conduct the sessions. It's a good opportunity to receive some of the best skating instruction available and get in some ice time over the Christmas break.

The sessions will be held from 12-2 p.m. during the week. The sessions will be divided into age groups of novice, atom, peewee, bantam and senior. Each group will meet for two-one-hour sessions.

Cost for the sessions is just a buck and well worth it. Any player interested in attending the sessions is asked to get in touch with their coach or convenor as soon as possible. Each group needs a minimum of 25 skaters.

While the power skating classes will be going on at Milton Sports Centre, Milton's highly successful and well-regarded Beaver Hockey Tournament will dominate Milton Memorial Arena. Action gets underway Boxing Day with



Michael Boyle

earlier) edition.

The new evidence which surfaced concerning a protest of a Jr. B hockey team game involving Milton Flyers and Oakville Blades suggests Oakville manager Murray A Walker is more to blame than he has led many to think.

Walker has claimed all along that a player he used in a game with Flyers didn't have the proper release because of an oversight on the part of the team from which he received the player.

Now, the manager for Little Britain (see opposite story) has claimed he made no deal with Oakville and said Walker was aware no deal was ever made.

As an OHA director, Walker should be more obedient of all the rules and perhaps the penalty, forfeiture of the game which would break Oakville's winning string, does indeed match the infraction.

It's a shame the league must come to this. In light of the situation, the OHA might want to look into the possibility of allowing players game tryouts without obtaining full releases.

New twist hits protest

Manager says he made no deal with Oakville Blades

By MICHAEL BOYLE
Champion Sports Editor

The general manager with the Little Britain hockey club, which did or didn't release a player to Oakville Blades and been the centre of a protest involving Milton Flyers, said he and Oakville hadn't made a deal but allowed Blades to have a look-see at the player.

Art Field, the operator of the Little Britain club in the Central Ont. Jr. C. League, said he and Oakville Blades' manager Murray Walker couldn't agree on a price for Chris McRae. But he permitted Walker to have a look at McRae. That is the reason, said Field, he hadn't sent in the player's release to the Ontario Hockey Association.

"There was no deal made," says Field. "That's why they didn't get the release. We later made a deal with North York of the Metro Jr. B. League) and the card when to the OHA.

"They wanted to see him in a game condition so we let them have a look. "When I make a deal," he adds, "I want the money in one hand and then I'll give them the card. We've been burned

too many times on this team and in this league.

"We had an agreement. But they never followed up on it."

When contacted earlier this week, Walker said he had made a deal and maintains the error was his fault in that he didn't follow it up and get the card to the OHA.

"He told me his credibility was at stake. If that's the case, then why did he send the release to the OHA after the Milton protest with no designation on it?"

Walker has since appealed the decision which is expected to be heard in about a month's time. Should the decision stand, for playing an ineligible player, the 10-1 win of Oct. 27 would be taken away from Oakville and a 1-0 victory registered for Flyers. It would end Oakville's winning string at nine games and start them on another string of 12. Ironically should everything hold out and Blades continue to win, they would hit 22 wins again Jan. 10 when the two teams meet in Oakville.

McRae is a 16-year-old hockey player who played last year for the Little Britain Jr. C. team which is in the Lindsay area.

Field gave permission for McRae to try out for several teams of Tier Two and Jr. B level although he failed to stick with any until North York Jr. Bs signed him to a card after he departed Oakville. McRae played five games in a Blades' uniform (the maximum allowed before a team can get the card back if the player is released) and scored a goal and had four assists.

Walker refused to discuss the matter as he has registered an appeal. He said he would discuss all the background once the appeal came before the OHA board of directors. As an OHA director, Walker will not sit in on the discussion.

Meanwhile, Field has maintained a relatively low profile and finds the entire situation somewhat ludicrous.

"I think it's ridiculous to have to go to that," says Field. "They must be really at odds at one another for that to happen. What's the difference in a 10-1 game?"

Field said he has encountered numerous difficulties getting his Jr. C club rolling at that level. Previously, Little Britain was Jr. D but lost most of its good players to local Jr. C teams.