



Winners. Surrounding Halton Furrow Queen Elaine White of Campbellville, are some of the top winners of the annual Halton Plowing Match. From left to right; David Wilson, of Norval, Jamie Alexander from Oakville, Keith MacKenzie of RR 2, Acton, Howard Dunk of RR 5 Guelph and Wayne Cunningham from Limehouse. Miss White, 19 is a former Milton District High School student.

## Plowman takes 3 firsts

David Wilson, of Norval, grabbed three first Place wins in the Halton Plowing match held last weekend in Milton. Mr. Wilson took the top prize in the junior farmers, and 4-H members under 30 (two

and three furrow) divisions. In addition to those prizes Mr. Wilson also won the Stan May and Lloyd May memorial trophies. The event, held on the Bell School Line farm of

Graig Reid, was favored by warm sunny weather for the Saturday competition.

In addition to 34 male contestants in nine classes, one woman entered the match.

Darlene Walton, of Cayuga, won the open tractor sod class competition in the 16-20 year old age group.

In other classes, Howard Dunk of RR 5, Guelph won first prize for four or more 14' plows and captured the International Harvester Company sSpecial trophy.

Wayne Cunningham of Limehouse placed third in Junior Farmers and 4-H Club Members under 30 years (two or three furrows) and also won the Judge George Elliott Memorial Trophy.

Jamie Alexander of Oakville took first place in Junior Farmers and 4-H Club Members under 30 years (four or more furrows) and won the J. E. Whitlock Trophy.

Keith MacKenzie of RR 2, Acton placed second in the antique tractor or steam class and also won the trophy for the best restored equipment.

Darryl Hostrouser of RR 4, Belwood placed first in the open plowing class, two or more furrows.

Rod Wilson of RR 2 Norwood was first place winner in the open mounted plows (two or more furrows) ages 12 to 16 years.

The winner of the open tractors in sod, (three or more furrows) was H. R. Jarvis, of 4400 Sheppard Ave., Agincourt.

Arnold Rife of RR 2 Cambridge took first spot in the antique or steam class.

The horseshoe champions for the day were

## Rain fall threatens severe crop damage

Farmers in Halton could well lose their entire winter wheat crop because of the unseasonably wet weather, according to a Ministry of Agriculture spokesman.

Doug Miller, assistant agricultural representative for the agriculture ministry, said unless the rain ceases to fall in this area for the next 10 days or so, there is the real possibility farmers will not be able to plant their winter wheat crop.

During a survey of the region Friday, Miller said countless fields were under water and the creeks and ditches were overflowing.

"It's the worst weather at this time of the year in recent years," Miller said. "The situation is more

like the spring than the fall."

Miller said the ground in the area is virtually super-saturated with water so that any additional rainfall runs off the land which is incapable of absorbing the moisture.

Vegetable and potato crops are rotting in the fields, with most of them being a complete write-off, he said.

If the weather does not improve, area farmers will not be able to get their equipment on the land to plant winter wheat. In order to harvest the crop next July, the wheat must be planted by mid-

September. By far the biggest crop planted in Halton is corn, but there doesn't seem to be much concern about getting it harvested.

According to Miller, harvesting can go on well into the fall since most of it is used for silage. Ironically, the corn crop in the area is a good one this year and it shouldn't be adversely affected by the excessive rain.

But every year, more and more farmers are planting soybeans and this crop is also susceptible to rot. As with the vegetable crops, and if the fields don't dry soon, this crop will also be lost.

### PROCLAMATION

The Arthritis Society in Milton is actively engaged in a campaign for funds to extend its program of research and education which will ensure better care of arthritis patients, greater understanding of arthritis and, ultimately, eliminate arthritis from the spectrum of human disease.

On behalf of the Council of The Town of Milton, I am pleased to proclaim the week of September 14-18 as "ARTHRITIS WEEK" in Milton and I urge our citizens to co-operate wholeheartedly with The Arthritis Society in supporting the campaign and in learning more about this illness and the objectives of the Society.

Sept. 8, 1981

G. KRANTZ, MAYOR  
TOWN OF MILTON



## The Royal Family has moved

The Royal Bank has moved to a NEW location directly across the hall in the Milton Mall. There is now access from both Ontario Street and within the Mall.

Bring your kids to meet the Royal Family and enter your names in a Special Draw

for 6 cuddly, stuffed Baby Lions and 2 handsome, 4 foot Daddy Lions.



Come & try our Personal Touch Banking Machine, making 24 hour, 7 day a week, automatic banking available.

When you succeed...we succeed.

ROYAL BANK

Who knows, maybe one of the Royal Family will be moving in with you.



Steady there. Wayne Cunningham from Limehouse takes great care with keeping a straight furrow. He took third place in the junior farmers division and was winner of the Judge George Elliot Memorial Trophy.

Bert Davidson of Acton and George Readhead of Milton.

Nineteen-year-old Elaine White of Campbellville was declared the Halton Furrow Queen at the banquet Saturday evening, held at St. Paul's United church in Milton.

Miss White, the sole entrant in the competition was an active member of the Halton 4-H Club for 12 years. She was crowned Miss Milton Fall Fair Queen in 1980.

A graduate of Milton District High School she is now studying business at the University of Guelph.

## Ski costs up at Kelso

Skiers can expect to dip into their pockets for a little extra cash this winter, following the approval of a rate increase by Halton Region Conservation Authority for the popular Glen Eden Ski Area in Kelso.

The increases will cover weekday, weekend and holiday lift rates, season's passes, mid-week season's passes, group rates and lessons for both adults and juniors.

A season's pass for an adult will now cost \$230, up \$40 from last year's price. Lift rates have risen approximately \$2. A full day lift rate (adult) will cost \$13, during weekend and holiday periods. Weekday rates will be \$11 for a full day, \$10 for an evening and \$8 for an afternoon.

Both morning and evening adult ski lessons will go up from \$60 to \$70 and afternoon lessons will rise from \$50 to \$60. Private and semi-private rates will also increase slightly.

SUNDAY, SEPT. 20

11 a.m. & 7 p.m.

GREAT MIRACLE SERVICES THROUGH PRAYER WITH EVANGELIST HENRY HINN



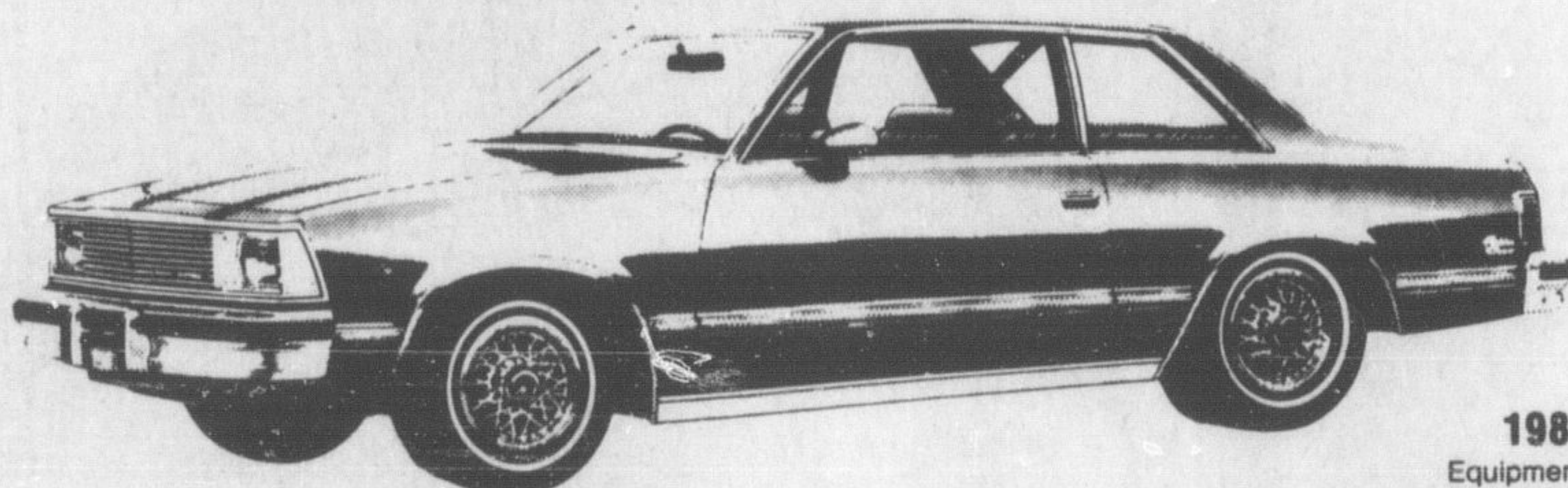
HENRY HINN

HIGHWAY GOSPEL CHURCH

OPPOSITE MILTON MALL

ALL WELCOME

## HOW MUCH A MONTH? Good Question.



1981 Malibu Classic

Equipment: V-6 engine, automatic transmission, steel belted radial tires, rear window defroster, AM radio, body side moldings, pin stripping, full wheel covers. Stock No. 3127.

BUY IT AND PAY \$345<sup>54</sup> PER MONTH...

LEASE IT AND PAY ONLY \$247 per month

Lease based on 33 months with \$1,000 downpayment. Incl. 75,000 kilometres.

451-2250



PLAN AVAILABLE ALSO ON: MONTE CARLO OLDS CUTLASS AT SIMILAR VALUES

\* Purchase Terms  
List Price \$9,000 plus tax. \$1,000 downpayment. Finance rate 20% APR. Total interest \$2,768.82. 33 months. Financing \$8,634.

TAKE DELIVERY AFTER SEPT. 24

241 Queen St., Brampton

## OPEN HOUSE

FREE BALLOONS FOR THE KIDS  
CFGM RADIO PERSONALITY "BIG JIM MARSHALL"  
FREE COFFEE AND DONUTS  
WILL BE BROADCASTING LIVE FROM 10 A.M. - 2 P.M. AT OUR BURLINGTON LOCATION - SAT., SEPT. 19TH.

BUY NOW While Prices Are Still Low

BONUS NO. 1



Only One Bonus Buy Per 300 lb. Beef Order.

BONUS NO. 2

25 lbs. PORK CHOPS  
25 lbs. Gr. A CHICKEN  
All for only 29<sup>99</sup> lb.

WITH THE PURCHASE OF 300 LBS. OF BEEF OR MORE!  
1 Bonus Buy per 300 lb. order.

CANADA GRADE A4 BEEF HINDS  
WGTS. (150-200 lbs.)  
159 HANGING WGT. lb.  
ONLY GUARANTEED TENDER

370 lbs. Of MEAT  
LOOK WHAT YOU GET: \* BEEF, PORK & POULTRY \*  
(Example only)  
300 lbs. Grade A4 Beef Froms 99c lb.  
30 lbs. Grade A Chicken 29c lb.  
10 lbs. Side Bacon 29c lb.  
10 lbs. Lean Pork Chops 29c lb.  
10 lbs. Side Spare Ribs 29c lb.  
10 lbs. Picnic Ham 29c lb.  
Total 370 lbs. All for only \$317.30

CANADA GRADE A4 Guaranteed Tender BEEF SIDES  
129 HANGING WGT. lb.  
ONLY AVE WGTS 350-400 LBS.

NOTE - All Beef sold Hanging Weight. Weight loss in cutting, boning and trimming will increase the price Per Pound. Aged beef has more tenderness & flavour. We reserve the right to limit. No dealers please. All meat cut by Appointment - Call today.

GUARANTEE: All beef orders, graded Canada A or Canada B are guaranteed for tenderness & flavour. If not satisfied return within 10 days and your order will be replaced package for package.

CHARGE IT 3-6 months. Same As Cash. No Interest. No carrying charges on Approved Credit.

PACKER TRIMMED PRIMAL BEEF ORDERS (Grades A1-A3 or A4) 169 269 lb. (150-300 lbs.)  
Choose Your Own Beef (Includes all cuts from Sides, Split Sides or Hinds) Hanging Wgt.

The Budget-Wise

BURLINGTON 2421 NEW STREET 637-2368  
STONEY CREEK 459 BARTON ST. E. 662-2874

MISSISSAUGA CUSTOMERS CALL DIRECT 827-6980

NOW AVAILABLE CNE CHAMPIONSHIP BEEF



Order Your Champion Today.