

Stone Crusher: Many children at Steam-Era were intrigued by the scale model of a stone crusher which was constructed by Fred Moore of Aylmer, P.Q. The model, which was powered by a steam

engine, took medium-sized stones and crushed them into small gravel and delivered the gravel into the toy truck.

STEAM-ERA



On parade. The Saturday Steam-Era parade disappointed many, for none of the steam engines were able to participate. They were mired in a muddy

field at the fair grounds, and forbidden to move until the mud dried up Sunday. A large crowd was on hand for the event.

Reunion survives rain Great show despite weather set-back

The 21st annual reunion of the Ontario Steam and Antique Preservers Association will go down in history as one of the wettest, muddiest shows on record. But despite a weather setback, the show did go on, and ended up on a successful note.

Club President Ross Calder said Steam-Era 1981 was "a success anyway" although gate receipts were definitely down. Other officials said it was doubtful the club would clear its expenses, thanks to the week of rains that continued into Friday and Saturday, leaving a field of mud which still hadn't dried up Monday despite clear skies.

Friday and Saturday were washouts, as far as the club was concerned. Those who did come, arrived in boots or trudged barefoot through the puddles and oozing mud.

Organizers were able to put together an opening parade through town Saturday, but it was a reduced effort that prompted complaints from viewers, thanks to the lateness of the event and the smaller size of the showing. All the steam engines were mired in mud at the fair grounds and officials issued orders they were not to move until the mud dried up.

A few steam engines ran Sunday, most were out and working on the Monday when sunny skies prevailed.

Building exhibits were good, as usual and changes created much interest, especially at the Ladies' Building which featured crafts and commercial displays. The Trading Post was moved from an outdoor stand to an inside hall, and did a roaring business.

The Barn of Yesteryear moved under the grandstand and was full, as usual, despite a decline in exhibitors. Souvenirs were located in a new trailer and business was brisk the final two days of the show.

Saturday's opening was handled by Halton Agricultural Representative Henry Stanley, assisted by Miss Canada 1981, Dominique Dufour from Laval, P.Q. Miss Dufour's visit was sponsored by The Champion and she and Mr. Stanley both rode in the opening parade, in antique cars.

Others participating in the grand opening included Halton MP Otto Jelinek, Milton Mayor Gordon Krantz, Halton MPP Julian Reid, Fair Board President Don Heath, and Councillor Brad Clements representing Halton Region.

Threshing competitions were limited by the mud and weather, but a demonstration was held Sunday. Then Monday, the Caledonia club threshers beat the Milton club's junior team in a run-off.

Sheaf tying, bag tying, log sawing, tractor driving and coverall races were staged in front of the grandstand. Saturday and Monday programs included tractor pulls for antique tractors.

There was plenty of entertainment over the weekend. Various musical groups entertained on stage, there was a Friday night variety show sponsored by the Milton Chamber of Commerce, a successful country and western talent contest Saturday night, a gospel hour Sunday night, plus a music hall called the Golden Slipper operating most of the weekend.

Over 50 antique cars and trucks presented a better than usual display, while 22 steam engines were on show and about 100 tractors.

Grace Church ran the restaurant beneath the grandstand, and sold out of roast beef dinners after about 2,000 had been served by noon Monday. The group also went through about 600 home made pies.

A special display this year came from Sutherland Bros. (Don and Alex) of Paris, who brought 11 antique Minneapolis Moline tractors for a display. They ranged in age from 1935 to 1961 and have been collected and restored over the past five years by the two brothers and their families. They also showed off a 1958 Edsel.



Winning style. Carol Sutherland of Paris guides her big Minneapolis Moline tractor to second-place finish in the Steam-Era tractor pull event. The tractor was one of 11 tractors the Sutherland family displayed at the show, ranging in age from 1935 to 61. The object is to pull the weighted load as far as you can up the dirt track.



At the wheel. Miss Canada 81, Dominique Dufour of Laval, PQ was in Milton Saturday to help officially open the four-day Steam reunion. After the opening, she had a ride on this steam engine owned by Robert Sears of Orillia. Her visit sponsored by The Canadian Champion and she was warmly welcomed by show-goers.

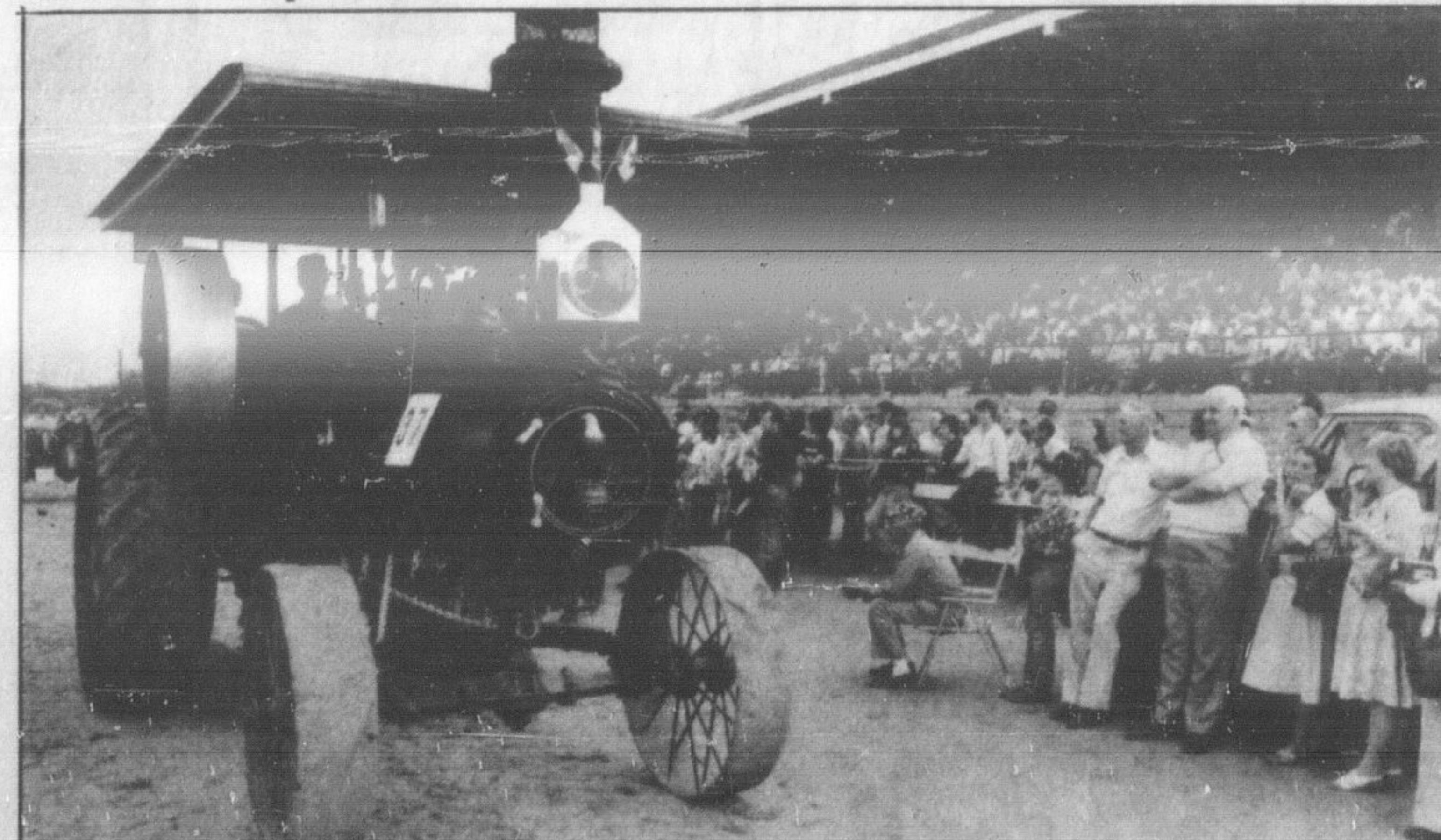


He knows how. Henry Stanley, Halton's Agricultural Representative who officially opened Steam-Era 1981, practices tying sheaves for a competition.

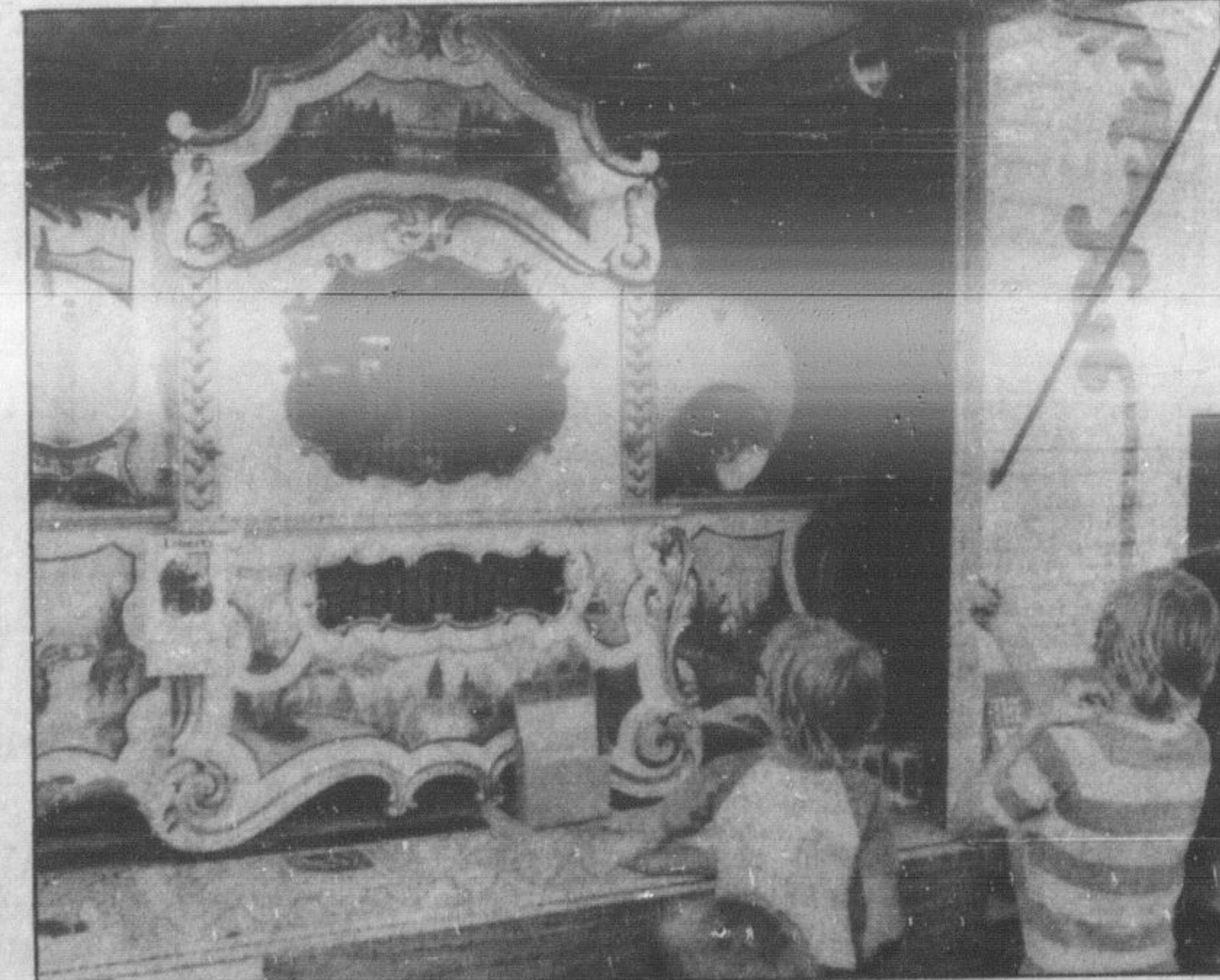


Scale model: Fred Moore (left) stands beside the model of a shingle mill constructed three years ago. The model is powered by a steam engine replica of the original mills used at the turn of the century. The model is to one-quarter size.

PHOTOS BY ROY DOWNS AND MICHAEL BOYLE



Music hath charms. Some love the "music" a steam engine makes as it toots its noisy whistle (left) but



some prefer the melodious tones of a restored, restored for the steam show (centre). Some opted



for the harmony of barbershoppers (right) such as the Nickelodeons of the Oakville barbershop singers chapter, who performed at the talent night show.