



## A night at the races

Holy Rosary Catholic Women's League members took a night off from their hectic convention planning program, and enjoyed an evening at Mohawk Raceway. They are hosting the diocesan "Faith and Family" CWL convention at the Holiday Inn, Burlington, June 5, 6 and 7. Fight Around, driven by John Brooks, won the CWL race that night and Mr. Brooks and the owners accept the prize from CWL officials (from left), Mary Ann Barrow, Alma MacIntyre, Diane Miller and president Irene Tonelli.

## Halton gives PD day

Halton's elementary school teachers are getting another Professional Development (PD) day starting in September. Halton's Board of Education agreed to an eighth PD day during an extraordinary Monday meeting. That meeting was called because the board failed to finish its tangled agenda during the regular meeting Thursday. The 1,275 teachers will have eight PD days for one year. High school

teachers still get nine such days. Trustees OK'd eight dates, rather than a policy, regarding the elementary teachers. The dates are: September 8, October 23, November 27, January 29, March 15, April 8 and June 29 and 30. According to board chairman Bill Lawson, the board—on Thursday, defeated a proposed policy on nine days for public school teachers. The board did not defeat

nine dates. On Monday, trustees faced a new bid by administration to grant elementary teachers nine PD dates in the new year. The ninth date, June 28, was dropped from the proposal after lengthy procedural debates about what was legal and which rules of order the board follows. Going back to Thursday. The board also turned down an amendment which would have given high school and public school teachers eight PD days. Acton trustee Arlene Bruce, speaking in favor of nine PD days, said "it's the only time they (elementary teachers) have to exchange ideas."

## Repave Hwy 401

Highway 401 is to be resurfaced in the Milton area this summer. Warren Bitulithic of Downsview received a \$367,828 contract to do the work, Minister of Transportation and Communications Jim Snow announced.

The job begins 0.8 miles west of Highway 25 and continues westerly for 3.5 miles. He said the section will be resurfaced to current design standards, including partial paving of the shoulders, making "a smoother driving surface for the motoring public."

## POOL SCHOOL

Thursday, May 7, 7:30 p.m.

ST. GEORGE'S ANGLICAN HALL  
GEORGETOWN

To register call 877-6242  
Aquafine is open to help you



348 Guelph Street  
Georgetown  
877-6242

## Halton health and social services committee restructured

A change in the system of holding regional council committee meetings has prompted the Halton Health and Social Services Committee to restate the sub-committees and the membership.

### Stolen

Halton Regional Police are investigating the theft of an estimated \$6,000 worth of silverware stolen from a Hornby home. Police said thieves apparently kicked in the front door of the house of Nunzio Tumino

Burlington Councillor Walter Mulkewich heads the Family Counselling Advisory Group, which has 11 other members. Milton Councillor Brad Clements and Oakville Councillor Anne Mulvale head the Day Care Study Steering Committee which has seven other members.

Oakville Councillor and Health and Social Services Chairman Carol Gooding heads the Gaps in Service Committee, which has five other members. Regional Chairman Jack Raftis heads the

School Health Services Committee, which also has Oakville Councillors Anne Mulvale and Carol Gooding plus six other members.

Carol Gooding is also heading up the Children's Services Steering Group which has nine other members.

The Ambulance Services Review Committee is in the process of reforming.

The newly-created Planning and Public Works Committee, which is to select a new chairman today, also has a number of sub-committees which are being reformed.

Halton Hills Councillor Russ Miller will head the Rural Outreach Development Program which also has staff

member Bob White as a member. Regional Chairman Jack Raftis and Halton Hills Councillor Roy Booth head the Halton Hills Urban Areas Review Steering Group which has three other members. Milton Councillor Brad Clements heads up the

Advisory Committee, which has 14 other members. Oakville Councillor Anne Mulvale is heading up the Ecological and Environmental Advisory Committee, which has 20 other members. Burlington Councillor Joan Allingham still heads the Sewer Rate Committee.

**NO PRICE INCREASE ON 1981**

**CAPRI, ZEPHYR, COUGAR**  
until May 9th, 1981 only

**14% FORD CREDIT FINANCING**  
also valid until May 9th, 1981 only

**GALLINGER MOTORS**

is a drive in the right direction - Ltd.  
655 Main St., Milton 878-2883

### GOING ON VACATION?

Worried about leaving your house unattended?

WELL RELAX!!

call

**R & M House**

**Sitting Service**

Some of our services include:  
... visiting premises daily  
... watering plants  
... watering & feeding pets  
... checking your utilities  
... etc.

FOR MORE INFORMATION

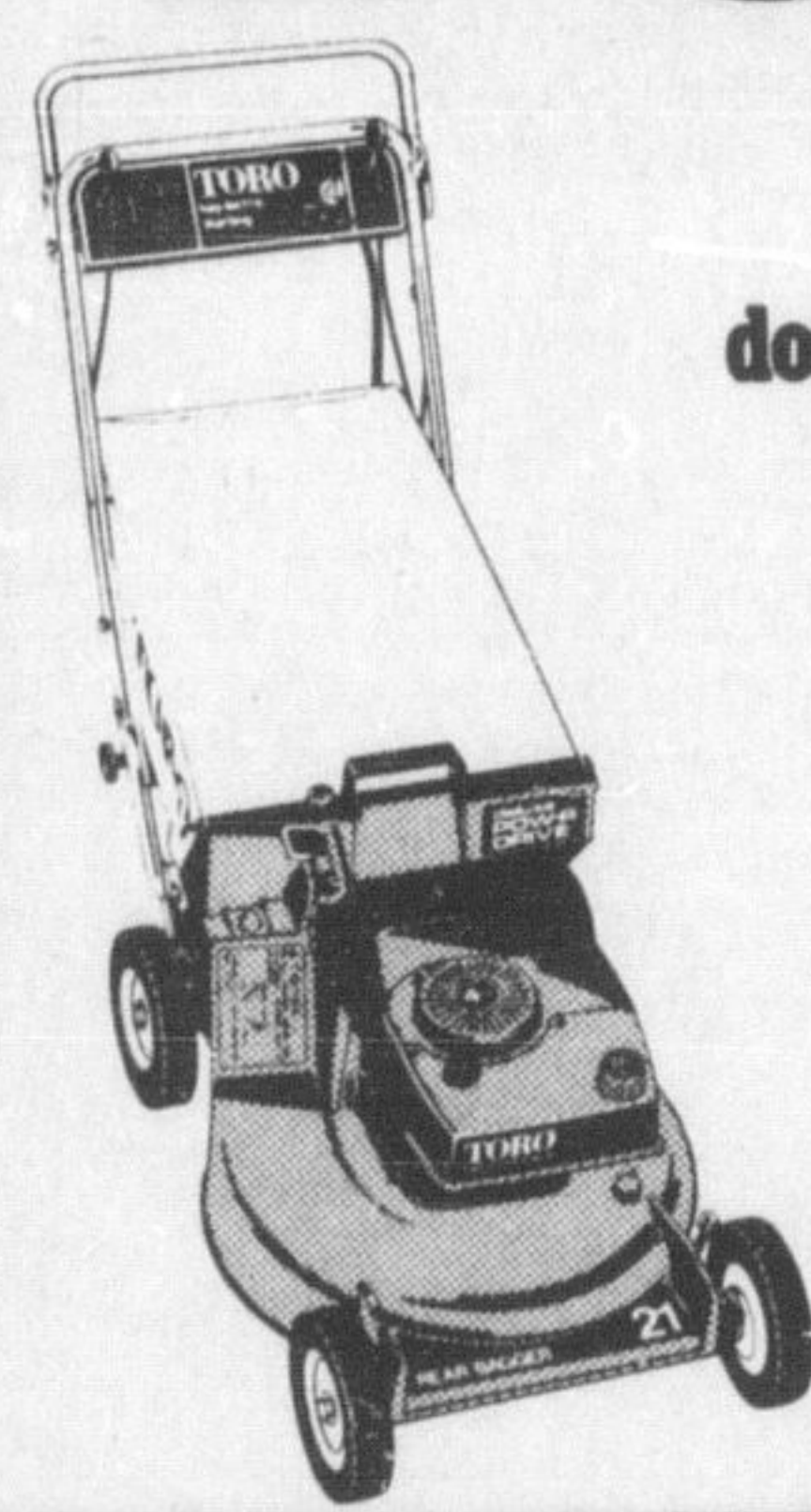
CALL 877-0770

**R & M House**

**Sitting Service**

"We care for what you care about"

# TORO



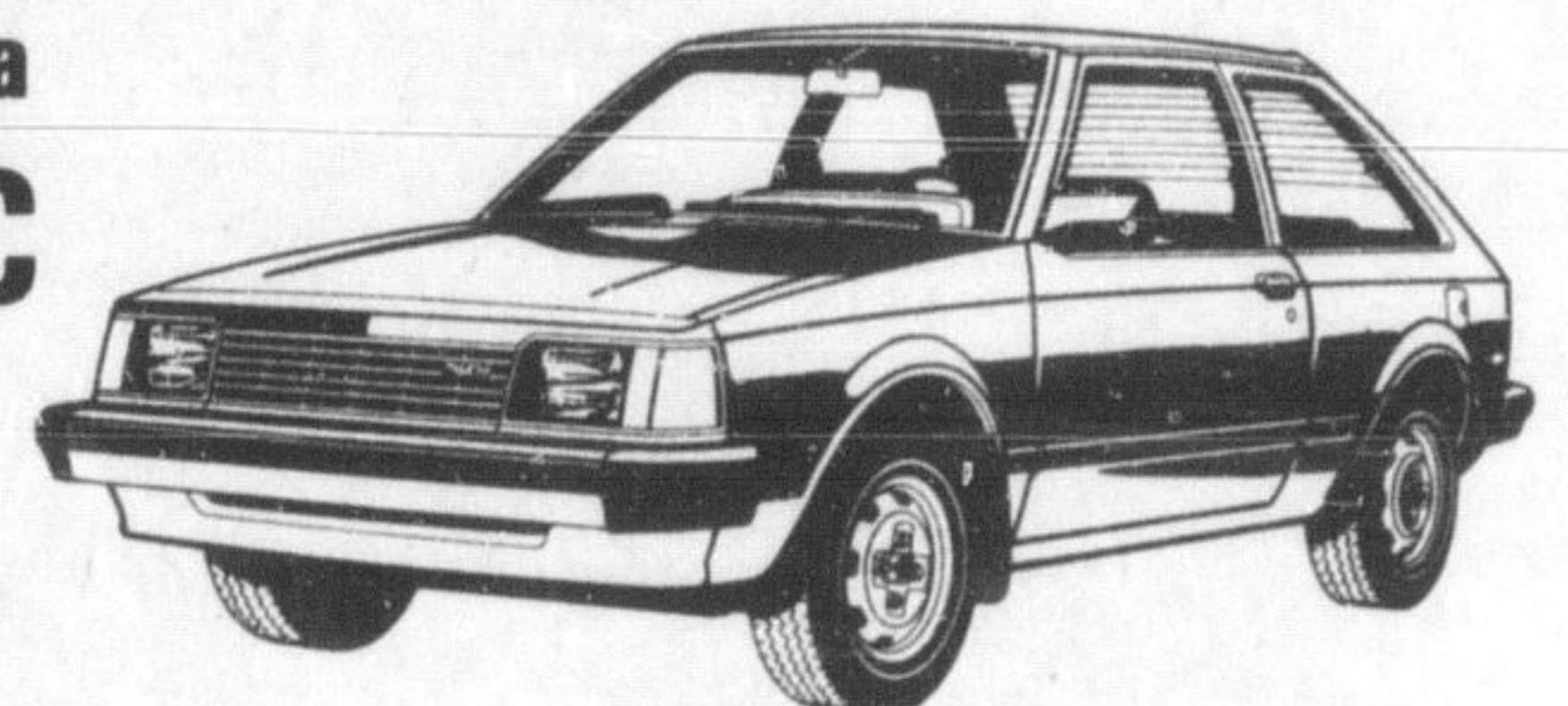
Haven't you done without a Toro long enough?



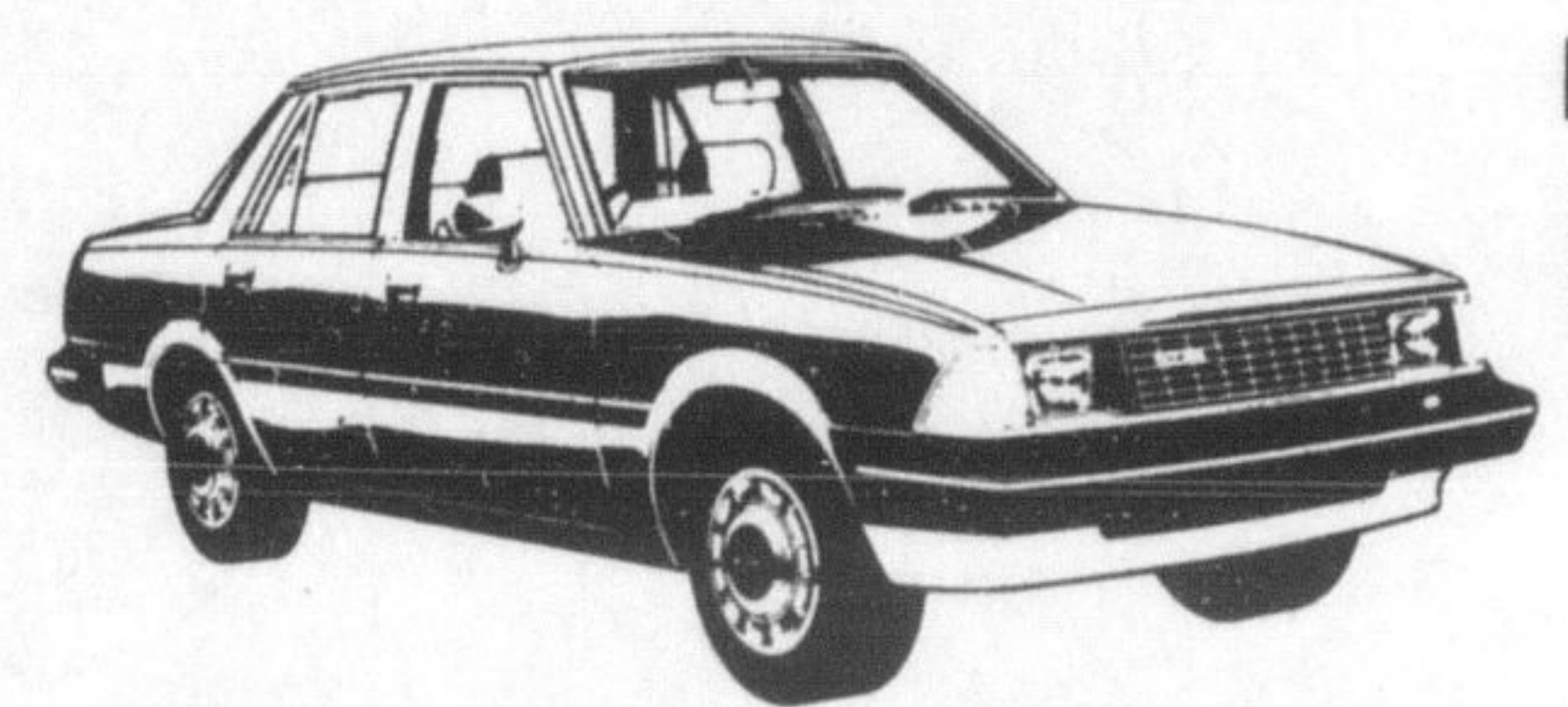
385 Steeles Ave.  
Milton 878-9222

**YOU HAVEN'T GOT A GOOD DEAL UNLESS YOU GET A GREAT CAR IN THE BARGAIN!!**

Mazda  
GLC



Priced from **\$5,300**



Mazda  
626

Prices from **\$8,400**

mazda

The more you look... the more you like!

**an achilles**  
motors

SALES and SERVICE  
347-351 Queen Street, Acton 853-0200

# THAT'S MY MOM

Mother's Day is Sunday, May 10th



**Famous maker**  
blouses from  
the Bay in  
flower-fresh  
georgette

**34.00 to 45.00**

**Elite style with cascade ruffle (A-140)**  
Short sleeve with tie neck. Soft white.  
8-16, **34.00**

**Long-sleeved blouse by Elite (B-140)**  
Open collar with dainty scalloped edge.  
White, pink. 8-16, **36.00**

**Elite blouse with side close (C-140)**  
Long sleeves with stylish pull-through tie.  
White or cream. Sizes 6-14, **38.00**

**3/4 length sleeve by Ann French (D-140)**  
Petal-style collar in your choice of white or  
strawberry. Sizes 6-14, **45.00**

Women's wear, dept. 140, all stores, except  
Eglinton, Oshawa and Lawrence Plaza.  
Think of the Bay for convenience and use  
your Bay Card, MasterCard Visa, or  
American Express.

the **Bay**