

# Where to go from here?

"Cheshire-Puss," she began, rather timidly. . . "Would you tell me, please, which way I ought to go from here?" "That depends a good deal on where you want to get to," said the cat. "I don't much care where. . ." said Alice. "Then it doesn't matter which way you go," said the cat.

The excerpt from Lewis Carroll's Alice in Wonderland could aptly describe Toronto today. Many people are answering the question "which way?" by moving west to Acton, Georgetown, Milton, Rockwood and area.

A visit once in a while to Toronto affirms the decision.

(Staff photos  
by  
Steven Dills)



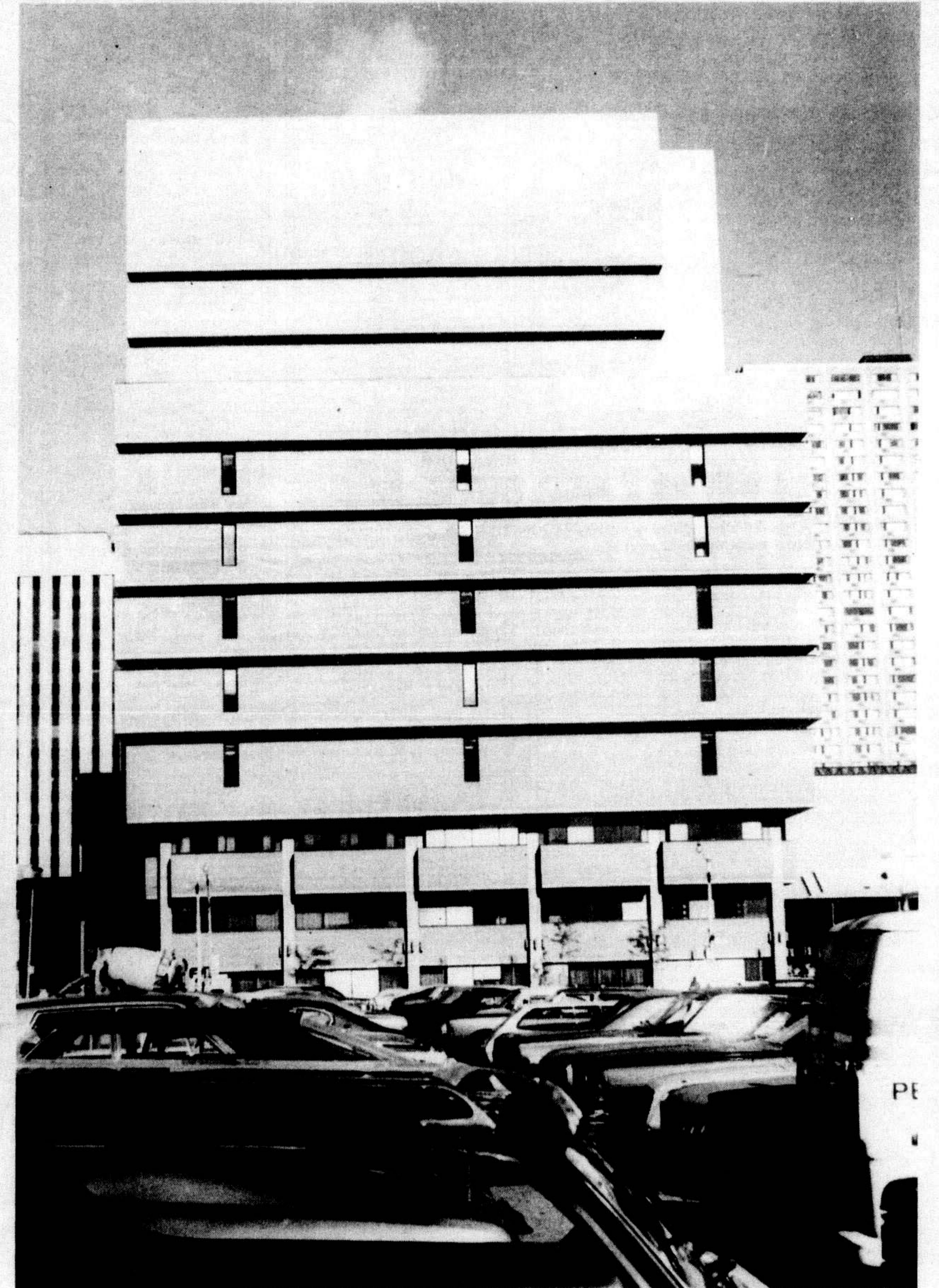
Streetcar Named Desire shares its parking space with some of the thousands of cars which invade the city each day. High-rise construction seems endless.



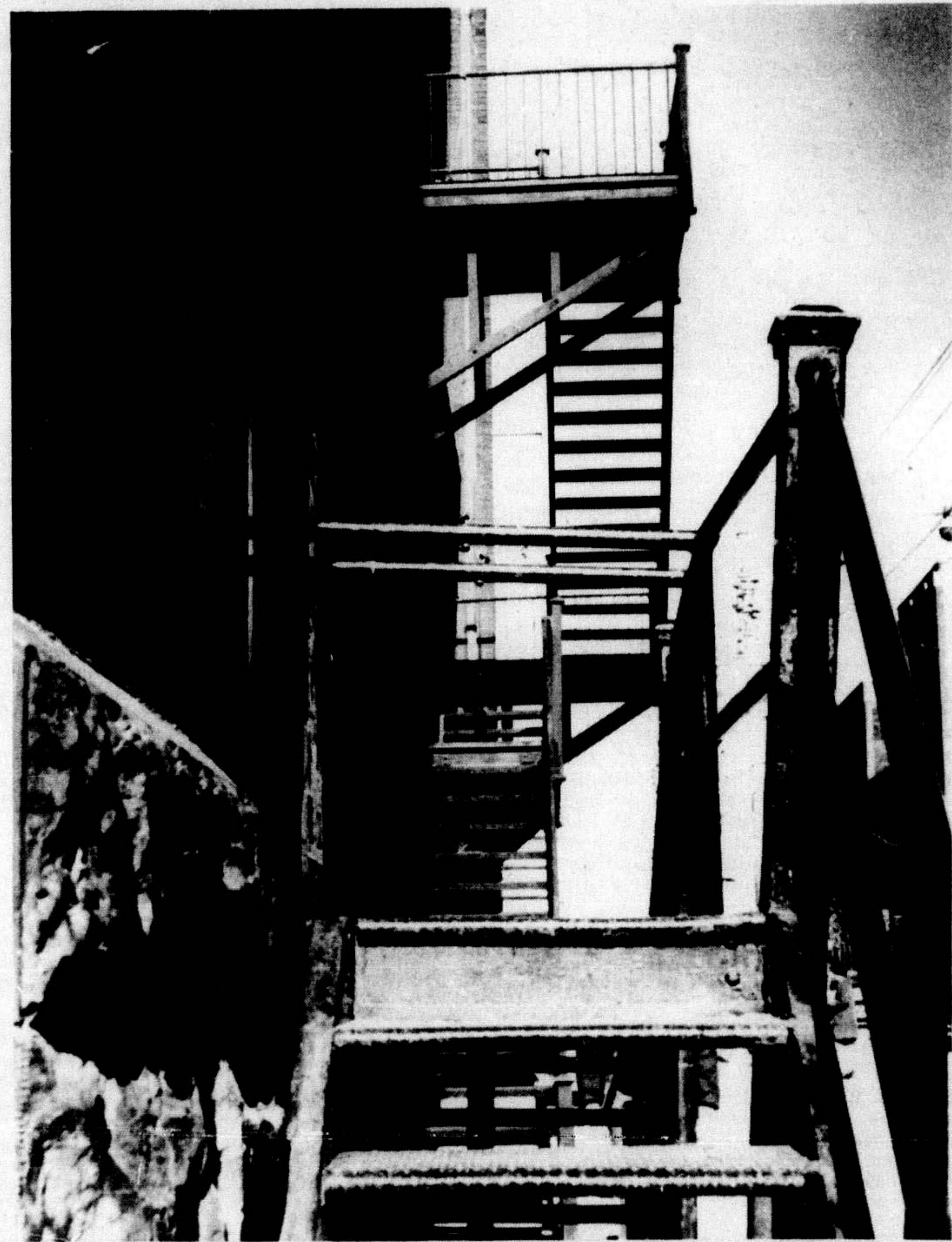
Packages block the streets as deliveries are made to downtown stores.



A reflection of the past is caught as the old Toronto City Hall can be seen in the windows of Simpsons downtown store on Queen St.



Cars are jammed together in the parking lot behind the modern structure of Ryerson Polytechnical Institute's library.



High density living means back alleys and fire escapes. Toronto's downtown core houses many people living in overcrowded conditions and paying exorbitant rents for the privilege.



Tearing down and building up, that's the name of the game. Here the construction of the new Eaton's Centre is underway at Yonge and Dundas Streets.



Constant construction is reflected by a walk down Yonge St.