

Pioneer . . .

Continued from page 1
kind for miles around, she organized one which she taught successfully for many years, and long before there were any other religious services, she conducted a Sabbath school with such acceptance that settlers came many miles to attend it."
One of her five sons, Johnson became Mayor of Milton in 1889.
Apparently there are a number of theories that could account for the tombstone being found where it was. It is possible that Mrs. Harrison once lived on Charles St. and is buried there. Another and perhaps more likely possibility is that the tombstone was faulty in some manner and the one that was found was never used for a tombstone—but sold as a patio stone for use as a sidewalk.
From pioneer cemetery?
It is also possible she was buried in Milton's pioneer cemetery on Bronte St., beside the P. L. Robertson plant. This cemetery went to ruin many years ago and during subsequent attempts to improve its appearance many of the old, broken stones were piled up at the rear of the cemetery. Someone may have removed the stone from there.



Mrs. Thomas Harrison
Died June 5th, 1867. Aged 86 years.

ST. JOHN NEWS

First Aid Us To Aid Others Later


Assist any boat in distress. The waving, in a vertical circular motion, of a piece of light colored material or a light by night is a distinctive distress signal.
FRACTURES AND SPRAINS
All fractures need medical attention. Before moving a casualty, you must splint the break. Use an oar or a convenient substitute to immobilize the broken bone. In the case of a leg, the uninjured leg can be the splint. Use plenty of bandages to secure the splint above and below the break.
Sprains commonly occur in the ankle or wrist. Immediate application of a cold compress followed by wrapping with a firm bandage will help prevent swelling and will ease pain. Send casualty to doctor or hospital for X-ray and treatment.
Be sure to wear proper footwear on board to prevent slipping or falling.
WATER SKIING
Water skiers should be competent swimmers. Avoid serious injuries by using commonsense. Don't ski with an inexperienced boat operator, in shallow water or at night, in swimming areas, or too close to shore or other boats.
Remember the OK signal after a fall: "both hands clasped over the head." UNCONSCIOUSNESS
A blow on the head can cause loss of consciousness. Never leave an unconscious patient alone. Never leave him on his back. When casualty has been checked for other injuries place him in semi-prone position on his side with his upper leg drawn up to support him and his chin tilted slightly back. Loosen tight clothing. Give nothing by mouth. Patient should be seen by a doctor.
Carry all required and recommended safety equipment.
Head for the closest safe anchorage or landing when a storm threatens.
St. John Ambulance of Milton wishes you a safe and fun-filled summer. We'll see you all in the fall.
Remember!!! "Safety First!"

Sheridan College of Applied Arts and Technology COLLEGE UPDATES

Tradition will be interrupted for the first time this summer.
The Scottish Pipe Band Association, which operates the only college of its nature in Glasgow, Scotland, has agreed to conduct three special pipe band sessions at the invitation of Sheridan College, during the summer school between July 7 and 25.
Piping and drumming, basic, intermediate and advanced, a unique opportunity to study with the experts, is being offered through the excellent instruction of the SPBA for the first time outside Scotland.
Pipe Major John Crichton of Edinburgh, an internationally respected piping judge and instructor, and Pipe Major Robert Shepherd, who last year led his pipe band Dysart-Dundonald to its first world championship, are well qualified in their capacity as piping instructors. Drum Major John Rea will instruct in snare, tenor and bass drumming techniques.
Piping and drumming basic, July 7-11 is open to all participants who are interested in studying elementary theory of music for pipes and drums, elementary skills of bagpipe playing and snare, tenor and bass drumming. Ensemble playing will be emphasized as well as solo piping and drumming techniques. Successful participants will receive the Scottish Pipe Band Association Elementary Playing Certificate.
Intermediate piping and drumming, July 14-18, will be open to all successful elementary certificate holders as well as interested applicants who have previously achieved a similar level elsewhere. Participants will study the intermediate theory of music for pipes and drums and intermediate skill of bagpipe playing and drumming. An intermediate certificate will be awarded to successful participants at the conclusion of the session.
A special course designed for players who wish to become accredited pipe and drum instructors, will be offered between July 7-18 during evenings and July 21-25 during days.
The expert instructors from Scotland will, by practical demonstration and observation of trainees, guide participants through a syllabus of piping and drumming instructional techniques. Successful participants will receive the Scottish Pipe Band Association's Instructor's Certificate.
Each of the three one-week sessions will be offered at a fee of \$30. Accommodations will be available at the Erindale Campus, University of Toronto for \$22.50 per week.

For registration and further information, contact the Sheridan College Continuing Education Division, Oakville Campus, Trafalgar Rd., at 845-9430.
Sheridan College plans to modify some of its courses to comply with future projections set down during the four-day Second General Assembly of the World Future Society held in Washington, D.C. last week.
About 2,000 delegates representing most countries of the world from business, education and government (including five from Sheridan College) gathered at the nation's capital to learn how the next 25 years would affect world affairs in the area of economy, food, resources, population, technology and education.
Jack Quistwater and Steve Arway from Sheridan represented the new General Education Division. Robin King from Photography and Dave Olive and Barry Ross represented the Technology Division.
Alvin Toffler
Experts in the fields of futuristic research and analysis, writers such as Alvin Toffler, author of Future Shock and special guest speakers including U.S. Senator Edward M. Kennedy (Massachusetts) provided stimulating talks, panel discussions and workshop sessions.
"In order to better prepare Sheridan students we wanted to see what viable ways we could modify or alter our courses and programs in light of projected trends in the world," said Quistwater.

86. REAL ESTATE 86. REAL ESTATE 86. REAL ESTATE 86. REAL ESTATE 86. REAL ESTATE



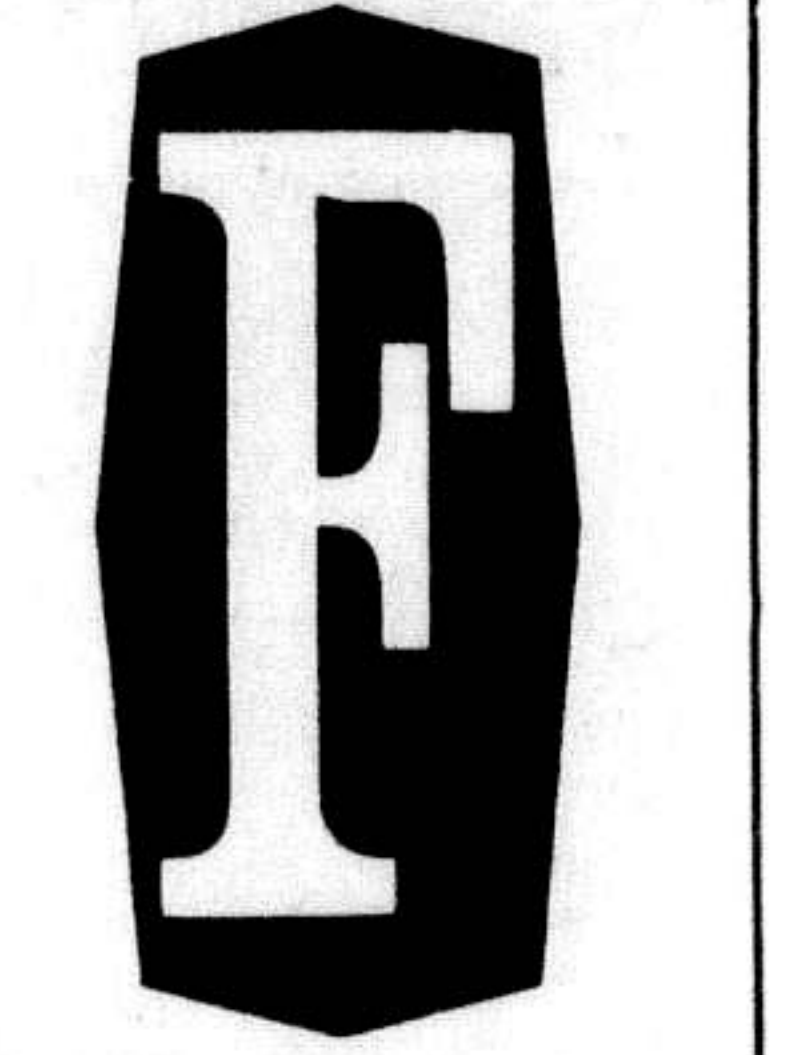
FOBERT
22 Ontario St. S. Milton
878-2365
TORONTO 826-1030
Milton

FOBERT

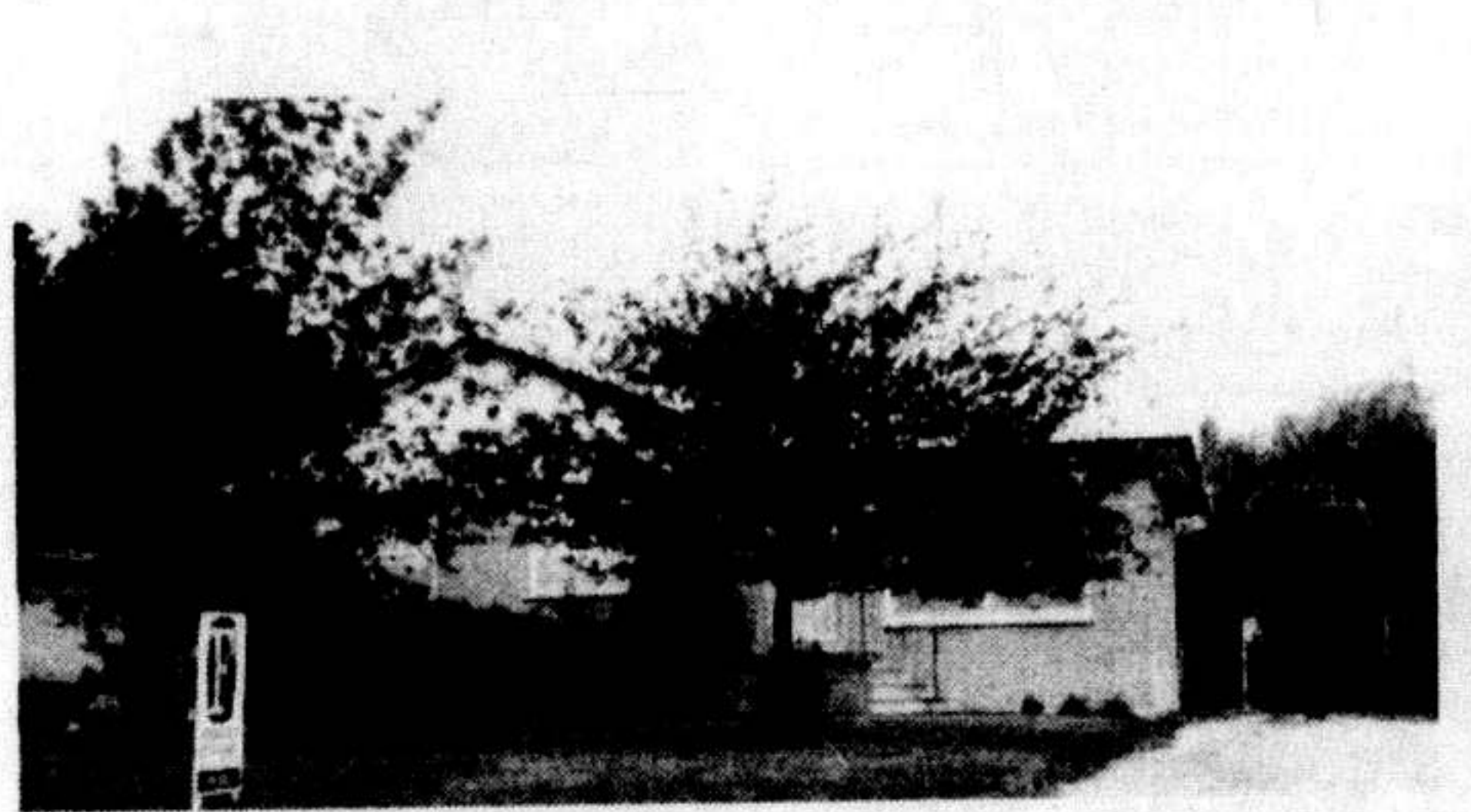
H. FOBERT REAL ESTATE LTD.

22 Ontario St. S., Milton (Across from Plaza)

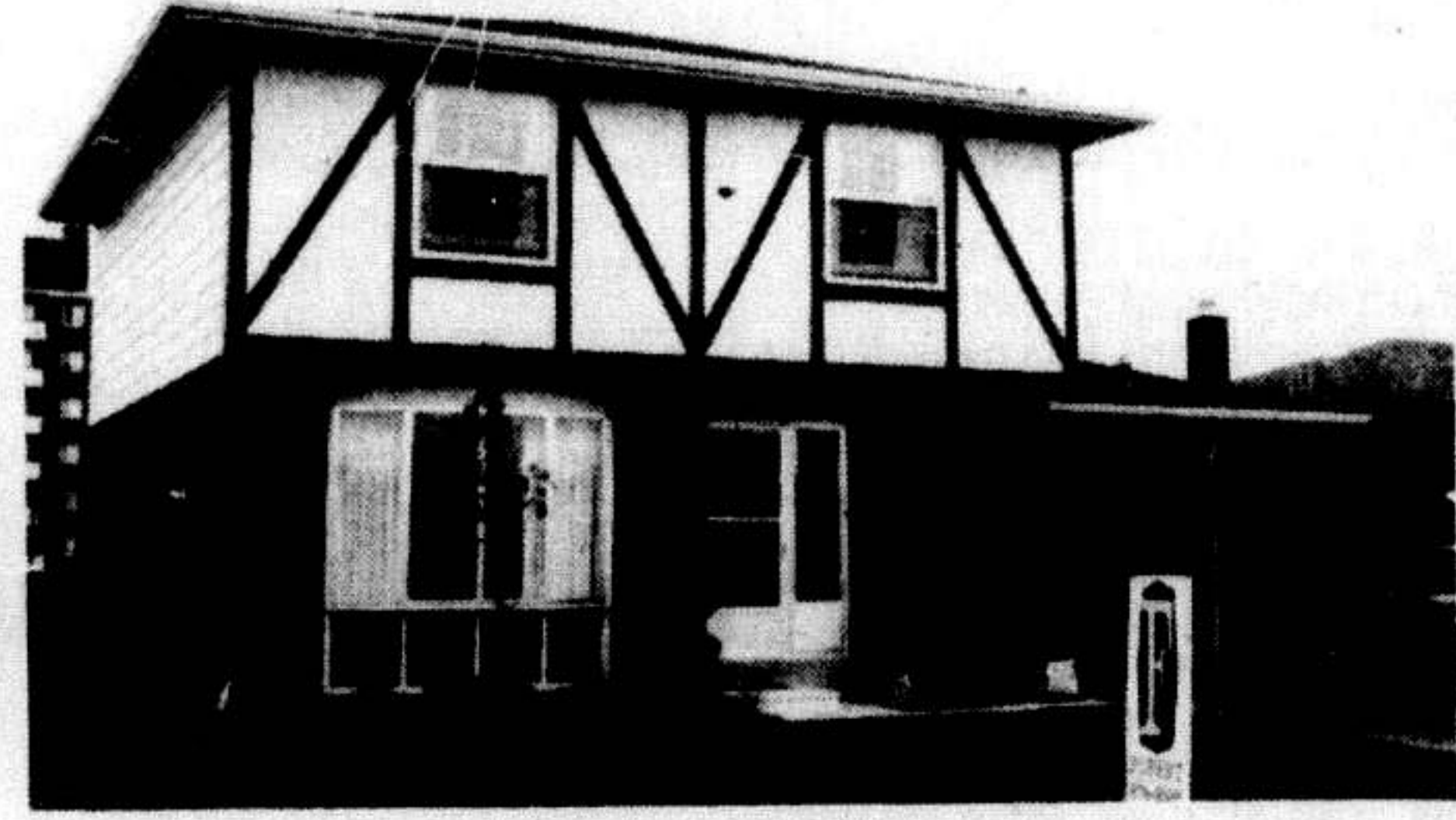
The Time is RIGHT The Price is RIGHT So Buy NOW!



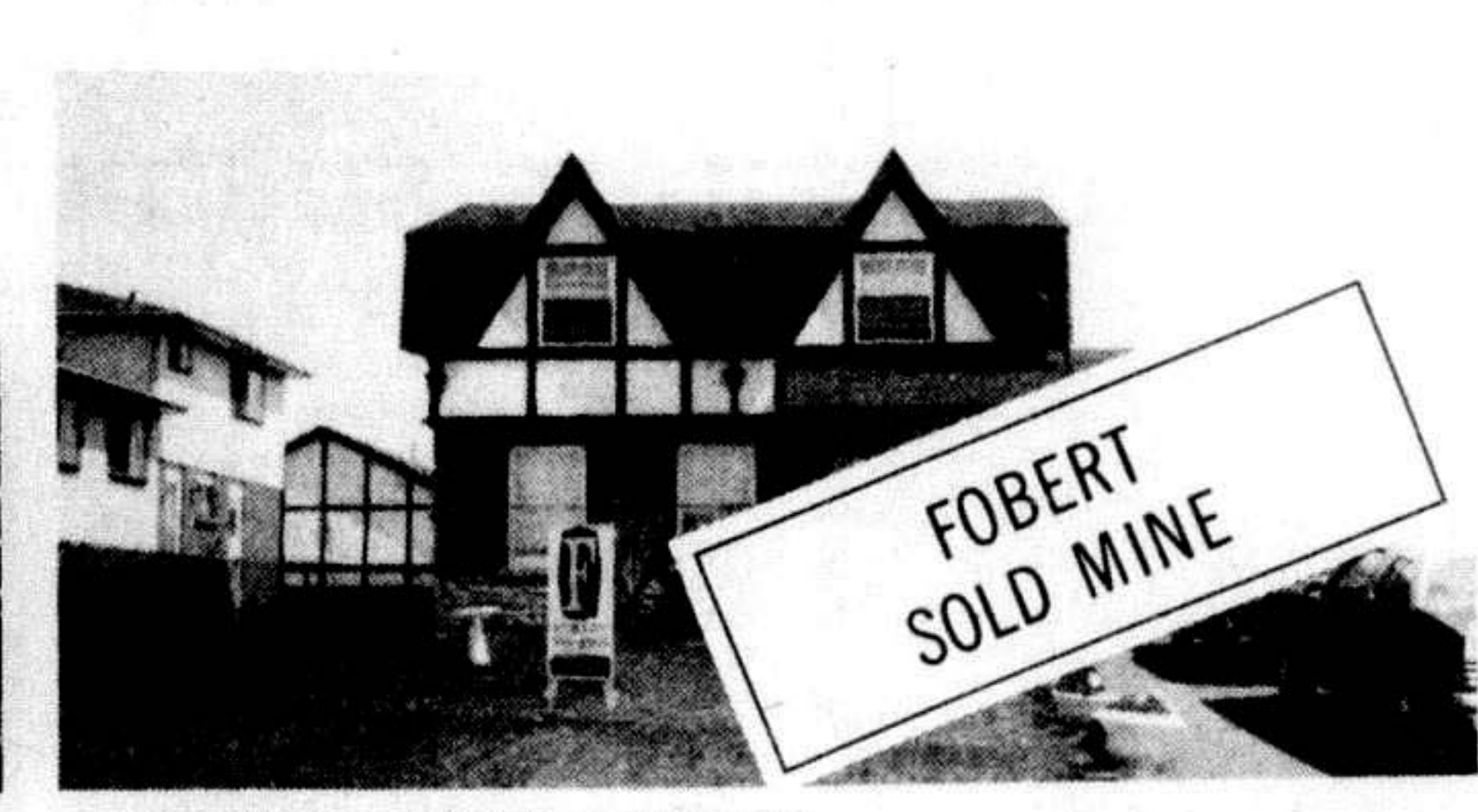
FOBERT
22 Ontario St. S. Milton
878-2365
TORONTO 826-1030
Milton



JUST MOVE IN
This three bedroom brick bungalow is tastefully decorated and just waiting for you. Downstairs offers plenty of space for a rec room of your choice. Mature trees and fenced back yard. Vendor will hold first mortgage. Priced to sell at \$53,900.



HERE'S A BIG HOME
Looking for a big family. Seeing is believing and you will just have to come and see for yourself how well constructed and what excellent condition this 2-storey, 4 bedroom home is in! Features double paved driveway, a pleasing kitchen with walkout patio doors: a fenced yard; professionally finished rec room, a large lot and in an area of fine homes. You won't be just looking when you see this \$64,500.



**SUMMER'S HERE!
WELCOME TO THE POOL!**
Relax on the large patio of this very attractive Tudor style two-storey home in Milton's Dorset Park. Of course there are four bedrooms, 1 1/2 baths, finished rec room with double doors to a play cum party room. Tastefully decorated and with hardwood floors throughout, also a fenced yard to keep your children in safety. Jump in—it's only . . . \$66,900.

WORTH EVERY PENNY
Where could you find such a fine 3 bedroom backsplit today complete with broadloom, eat-in kitchen, double car garage, finished family room with fireplace and extra 2 pc. washroom? Located in excellent neighborhood close to schools and shopping and has an ideal 8 3/4 per cent 1st mortgage. An outstanding value offered at \$61,500.

CHILDREN WILL LOVE PLAYING
In the wide open courtyards and playgrounds of this condominium townhouse, 3 large bedrooms all with wall-to-wall shag broadloom, extra 2 pc. bath, reserved parking spots, elegant wallpaper throughout. Call today for a private showing. \$46,500.

**LIVING AT ITS
SPLIT LEVEL BEST**
This fine family home is located in an ideal section of Milton near public and high school; features a single car garage with walk-in to basement, mature trees, finished rec room. Ready to sell at \$67,500.

LIKE COUNTRY LIVING?
Try this for size. Plenty of room to grow in this 3 bedroom brick rancher on 1/2 an acre minutes from Mississauga. Many surprise features including a fieldstone fireplace plus one stone one, a games room, rec room, an office, laundry room, water softener, freezer and much much more. Excellent landscaping and home in immaculate condition. Do yourself a favor. A must to see. Just reduced. \$76,900.

SPACIOUS
Entertaining or family fun is a breeze in this 2700 sq. ft. brick rancher nestled in a beautiful, 2 acre heavily treed lot. Plush broadloom throughout, walkout patio doors from a huge kitchen and master bedroom onto a 45 ft. cedar sundeck, main level family room (22x21) with floor to ceiling stone fireplace. This custom built is only 1 yr. old and there's more and more and much more. This spectacular value must be seen to be appreciated. Minutes from Mississauga. \$139,000.

WISHING WELL
If you wish for a beautiful ranch on a fenced 1 acre lot, if you wish for a rec room, if you wish for a triple garage, if you wish for an airy kitchen with a dishwasher, if you wish for a swimming pool, patio, spring fed pond, 26x14 shed, and a brick beautiful home. Well, if you wish for a home that you and your family can be extra proud of this may be exactly what you are looking for. Call today as vendors anxiously waiting for all offers. \$82,900.

OWN A BIT OF THE GRACIOUS PAST
This authentic brick farmhouse on almost 3 acres has been beautifully renovated ideally for a single family dwelling or a duplex at your option. Ideally located just on outskirts of Milton, on edge of Escarpment. Complete with fruit trees and (90x50) pond on property, large barn ideal for antique dealer or craftsman. This property is a must to see. Just reduced \$8,000 to \$84,900.

COMFORT PLUS
If you prefer a neat three bedroom bungalow with many extras, including rec room and nicely landscaped lot, then this home should definitely be considered. Located within walking distance of both public and secondary schools. Don't delay. Call today. Priced at . . . \$54,900.

THE VEGETABLE GARDEN IS PLANTED
So just move into this country rancher on 1/2 acre and enjoy it. Country size kitchen, 3 bedrooms, panelled rec. room, sundeck, above ground pool and much more. Asking price . . . \$68,900.



COUNTRY CHARM
Take a leisurely ride less than 10 minutes North of Milton and you'll find this modern 3 bedroom brick bungalow surrounded by huge maple trees and white ranch style fence; features broadloom in living room; extra large kitchen; full basement and ideally located close to schools; 1/2 acre of land. This distinctive home, just listed, sells for \$56,500.



DOWN TO EARTH
Yes, the garden is planted and growing in the back yard of this superior quality 3 bedroom backsplit in Dorset Park. There is a large family room, extra large garage, 1 1/2 baths etc. and the whole is beautifully decorated. Buy now and enjoy the fruits of someone else's labours. . . . \$65,500.



JUST LISTED
Tastefully decorated side split in good residential area. This nearly new home has plush broadloom, rec room started, patio at rear and fenced yard. Good 9 per cent mortgage and asking \$59,900.

OPEN 9 'til 9

For more details call

878-2365

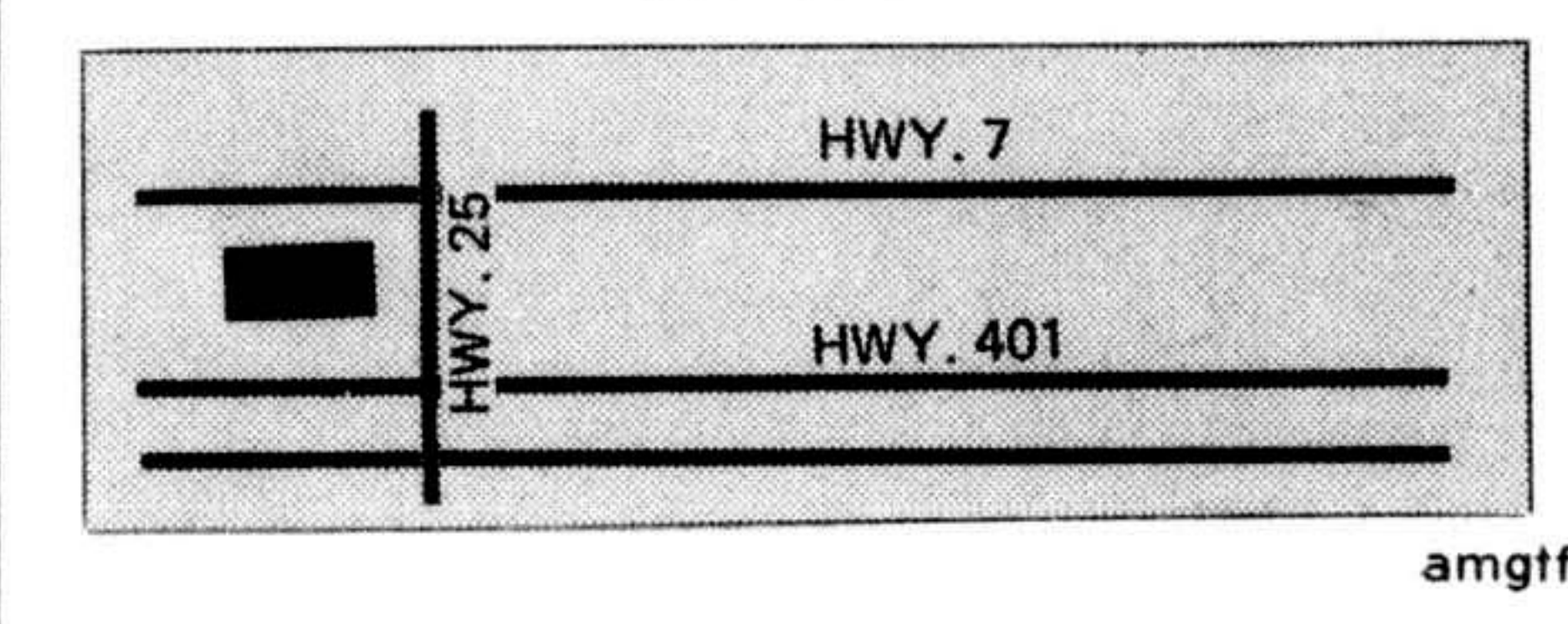
Tor. Line 826-1030

Gary Thomas, Mgr. 878-2366
Bill Currie 878-4944
Muriel Dubien 877-6281

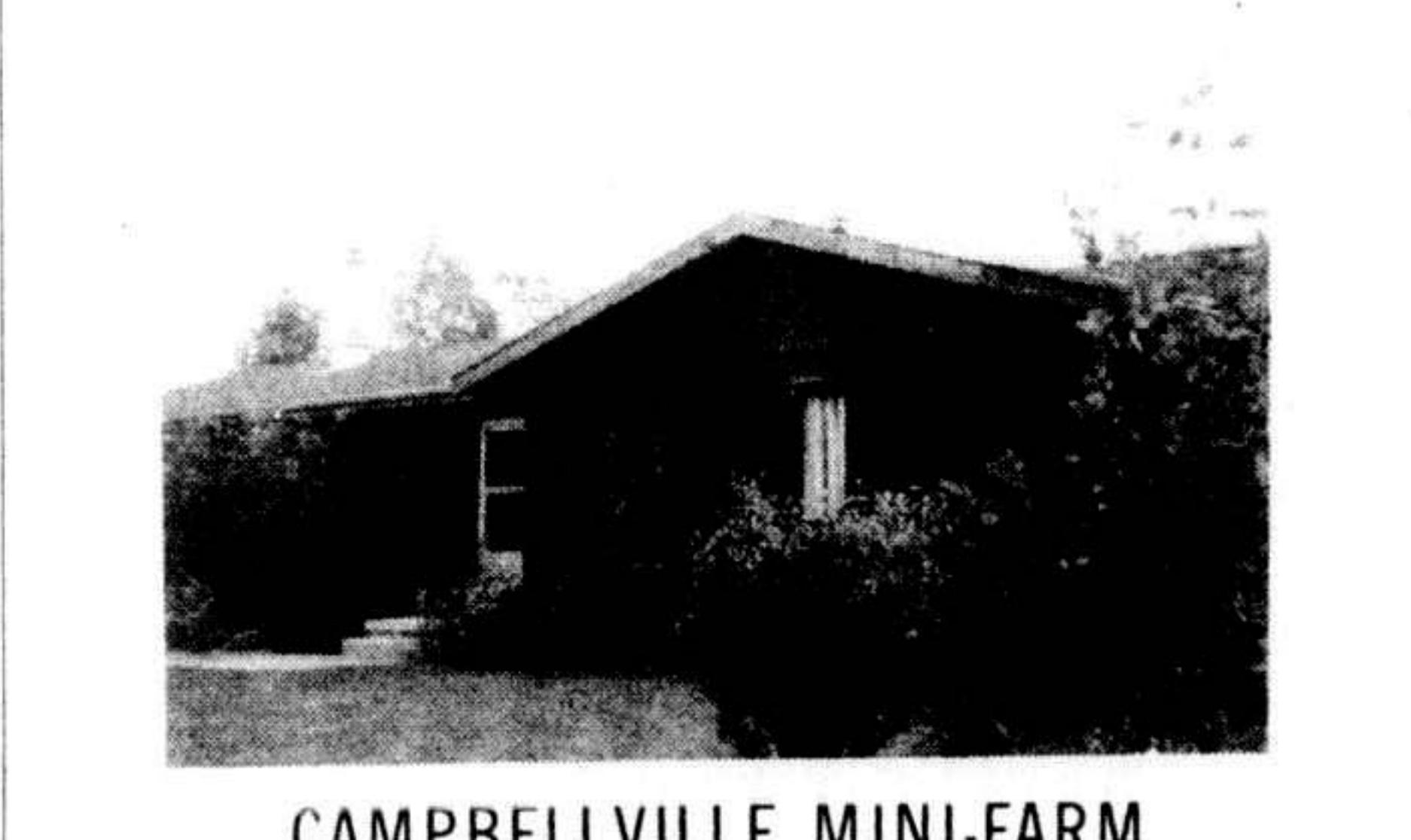
Audrey Newell 878-5339
Warren Crawford 878-7487
Joan Johnston 877-7210

86. REAL ESTATE 86. REAL ESTATE

**KINGHAM HILL ESTATES
ACTON**
\$53,900 FULL PRICE
INCLUDING PAVED DRIVEWAY FOR FIRST 10 CUSTOMERS.
Large new 2 storey, 4 bedroom homes, built on beautiful private lots. Attached garage, choice of broadloom. Low down payment. 2 months possession.
10 1/2 PERCENT N.H.A. GUARANTEED MORTGAGE.
Call:
ALTEO CONSTRUCTION LTD.
853-0190



Bayley MacLean
Limited Realtor



CAMPBELLVILLE MINI-FARM
Single car garage, fireplace with heatolator, sliding doors from dining room to patio, 3 large bedrooms, large kitchen including fridge and self-cleaning stove, carpeted living room, excellent well. . .
All this on 3 prime acres of farmland including an aluminum covered horse barn with full services and full line of garden machinery.
Asking \$72,900 with terms. Call Jim Watson 878-5257.

ATTENTION PROFESSIONAL PEOPLE!
Prestige Estate Lots
On Wooded Escarpment In Milton

- All wooded lots ready for building
- Range from 5 1/2 to 6 1/2 acres
- Some have spring stream
- Paved drive into lot sites
- All underground services
- Protective controls
- Just 40 minutes from Toronto
- Interesting terms available

Call Jim Watson 878-5257.

YOUR LITTLE CORNER OF THE WORLD
Three acres, barn and a charming home in the country can be yours if you act fast, in a beautiful Campbellville location. You leave the hustle and bustle behind you once you pull in the driveway, yet only five minutes to highway intersection, excellent frontage. It's delightful and different. Good financing. Asking \$72,500. See it soon. Call Mrs. Scott 639-3733 or res. 639-8369.
BAYLEY MacLEAN LTD.
REALTOR

The second annual Sheridan College Summer School gets off the ground on July 7, with an interesting assortment of general and special courses for people of all ages and means.

A number of courses are being run again this year at the Oakville Campus due to popular demand. The Genealogical Research Seminar which ran successfully last year will be offered Aug. 11-15.

Another area of growing popularity is the study of parapsychology. Between July 7-11 Dr. Howard Eisenberg will conduct a special parapsychology course which delves into altered states of consciousness, including spontaneous psychic phenomena such as intuitions and poltergeists; and current parapsychological research in telepathy, clairvoyance, precognition, spirit mediumship, psycholinesis and psychic healing.

T. A. seminar
Transactional Analysis, a four-day seminar in August will examine basic T.A. (Transactional Analysis) principles, ego states and human development, passivity and methods of treating schizophrenics, the Kahler Negative Miniscript—a new therapeutic tool, and reparenting information.

Registration has also been very active in the jazz band clinic, July 28—Aug. 1. Internationally renowned jazz trumpet player, movie-score writer and arranger Wes Hensel will be conducting this week-long clinic designed primarily to allow young musicians an opportunity to explore various techniques of jazz, stage, and improvisational techniques.
With the expansion of the Summer School into three other Community Service campuses at Burlington, Mississauga and Brampton, the college has been better able to serve the continuing education needs and interests throughout the regions of Halton and Peel.

The Community Service Division at Sheridan College issued a report this week showing a total student enrolment of 26,032 for 1974-75, representing a 68 per cent increase over last year.
Dean of Community Services Don Hamilton termed the comparative period ending March 31, "a good year" in all three part-time education areas comprising the division—Retraining, Management Development and Training and Continuing Education.
The report, presented to the Sheridan Board of Governors, revealed a substantial enrolment increase in Continuing Education alone, from 9,485 last year to 17,050 for 1974-75 which represents an 80 per cent climb.

11,006 in Halton
In a breakdown by region, Dean Hamilton pointed out that this year 5,279 students attended Community Services campuses in Peel while 11,006 signed up for courses at the Sheridan campuses in Halton. Summer School enrolment accounted for another 765 students.
Full-time student enrolment for 1974-75 was 3,753. The projected increase represents the large number of students who will be returning this September, while the number of freshmen will remain static.

\$600 damage
A total of \$600 damage was reported by the Milton OPP after a Friday afternoon accident on Hwy. 25 just north of Hwy. 401.
A 1972 Ford driven by Alan Nixon, 285 Ontario St., Milton and a 1975 Monarch driven by Shirley Zanatta, 238 Parkway Dr., Milton were involved

