

Girls' ball

**St. Clair on top
Bus Liners strong**

In the Squire division of the Milton Girls Softball Association St. Clair Paint and Wallpaper outdistanced rival Peggy's 17-13. St. Clair holds first place in the youngest group without a loss.

Milton Area Radio Club came through with a 11-4 win over Beta Sigma Phi, for their first win of the season. Lisa Kasko and Janet Rererich came up with doubles to help the MARC's out.

In other Pee Wee activity Fillies edged by the Kinsmen 17-16 on the strength of a Barbara Van Den Heuvel home run. For the Kinsmen girls Patsy Little, Kathy Trento and Nancy McIlwraith all scored with homers while Patsy added a triple in the seventh.

**A, B winners
at flag football**

Team C rolled by a much improved Team A 40-22 while Team B flattened Team C in Men's Recreational Flag Football last week.

Quarterback Suzuki masterminded a powerful offense with R. Taylor his favorite target. Taylor scored 18 points while Ken Thompson and M. Monette scored two point converts with Cam Thompson and Hugh Godfrey running for majors.

Team A's Bob Hilliard played a fine game at quarterback with F. Glinney

and M. Ford supplying good hands to throw. Bad breaks cost A the game.

Mike Kendrick paced the B team from quarterback with pinpoint passing for two majors to Ken Keshita with other scores coming from Langridge and Bob Sargent.

Fred Ross helped the D team throwing to L. Meechan and B. Huston for TDs with C. Thomas kicking a pair of converts.

The football league may form an all-star team to play with a group from Oakville.

Something missing

A photograph published on the youth page of last week's Champion showed three canoe loads of Milton District High School students paddling like voyageurs across the mill pond. The workout was part of their outdoor education program.

The photo prompted a call to The Champion newsroom by a concerned mother who asked simply, "where were the life jackets?"

Milton's . . .

Continued from page 1
is our contention that with the development of the North Oakville community as proposed . . . what will in fact occur is an extension of the vast urban sprawl radiating outward from Metro Toronto. "After travelling through many miles of concentrated urban development, a 1,000-foot Parkway corridor will hardly be noticeable to a resident or visitor passing through the area."

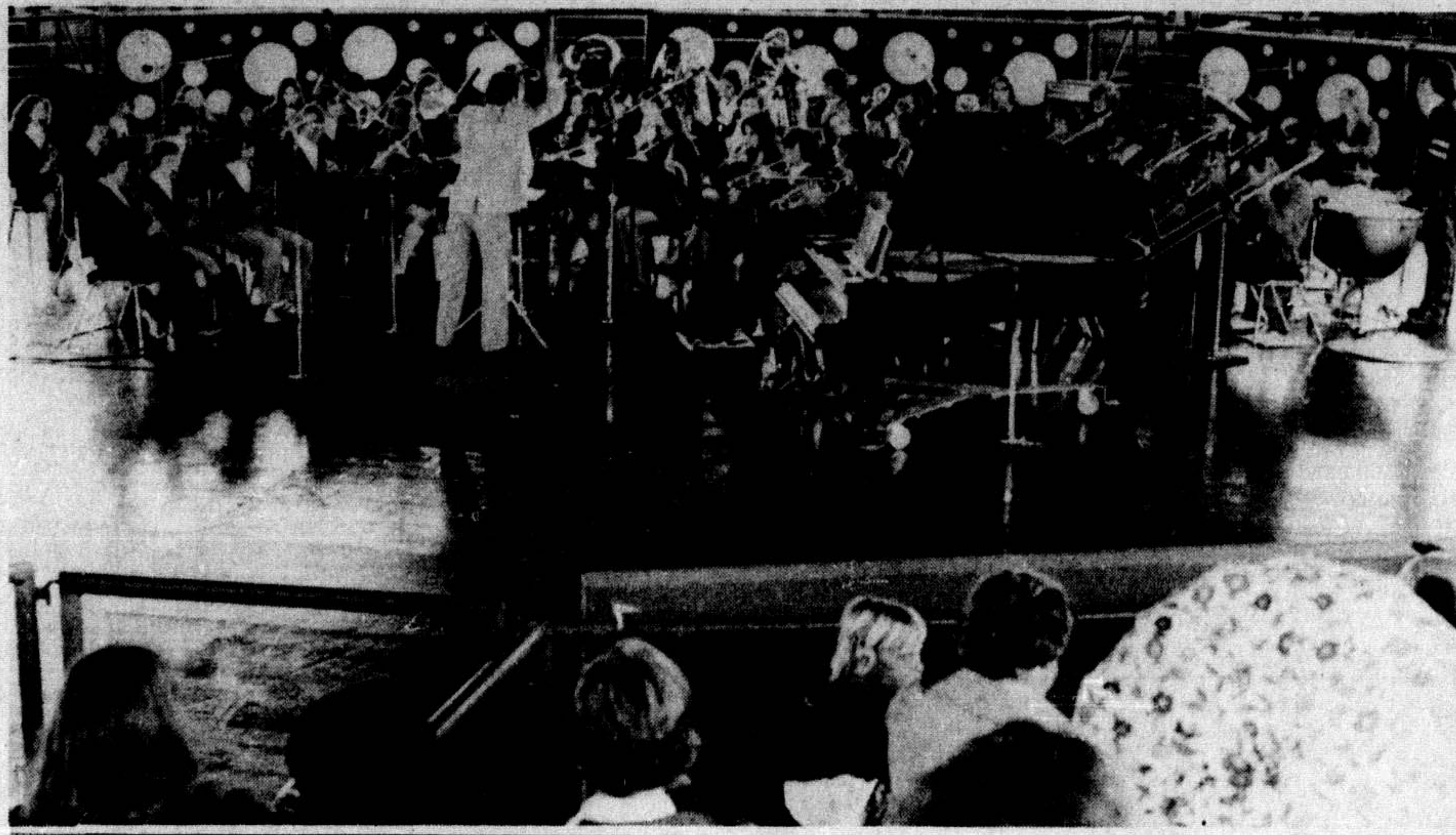
The Milton report says areas now designated as Parkway Belt should be "viewed at face value for what they are—namely utility corridors passing through agricultural areas."

Need industries
Both the COLUC plan and the Toronto Centred Region

plan are opposed to the creation of Milton's long-heralded industrial park north of Highway 401, because provincial authorities believe future development should occur east of Toronto rather than west, in order to balance the populations in future.

The Milton report attacks this thinking, saying the town assessment is 75 per cent residential and it "deserves the right to provide its citizens with job opportunities close at hand in an effort to not only correct the assessment imbalance, but to help in reducing commuting demands."

"Milton does not propose to become a bedroom community for the workers of Metro," it concludes.



N. Bates resigns

Halton Region Solicitor Noel Bates disclosed Monday that he has resigned in writing from his post. He has accepted a position as legal counsel to the judicial inquiry into alleged corrup-

tion at Mississauga. Mr. Bates said he plans to finish up some Halton work during the summer months. He has been Halton's full time solicitor for the past year.

AT ONTARIO PLACE Milton District High School concert band presented an hour-long concert on Wednesday of last week. The band is shown here performing in the 2,000 seat Forum under the direction of Laurie Walker who teaches the music program at the school. The school's jazz and rock group, Scarlet Fever also performed during the program. A number of parents from Milton attended the event.

Ebenezer

Mrs. Ron McLean Old Ebenezer was full for the biennial cemetery memorial service. Former residents of the area enjoyed visiting together, over lunch, after the service.

A handsome lecturer was dedicated to the memory of the late beloved Laura Early. Two of her children, Margaret Blacklock and Don Early made the presentation.

Greatest need—Common Sense
Meanest feeling—Regret at another's success.
Best gift forgiveness.

FREEZERS

Chest & Upright
All Sizes & Colors
Buy Now
and Save on Food Prices
Visit our Showroom
Aquafine - Westway
595 Speers Road
OAKVILLE
844-9781

**Lions install
75-6 executive**

Milton Lions Club installed its new officers for 1975-76 this week, when Past District Governor Russ Grafton of Brampton visited the club ladies' night Monday evening. Dennis Rowley is the new president, taking over the reins from John Jensen.

The service club has recently added three new members—Jim Currie, Peter McCuaig and Bill Scarrow. They were inducted by Deputy District Governor Dan Richmond of Streetsville.

Milton Lions had a large attendance at the District Convention in Hamilton in May, including five voting delegates John Jensen, Peter Steger, Chris Schouten, Sam Nadalin and Dennis Rowley. In the downtown parade the Lions entered the Milton Girls Pipe Band, a Steam-Era float, a 30-year-old gas tractor owned by Lion Doug Currie, the club's wheelchair van donated to Halton Manor, and a large marching unit of local Lions. The convention next year is in Quebec City.

Lions have named Fred Verstraete and Peter McCuaig to be their representatives on the Milton Santa Claus Parade committee. The club has purchased a new piano for the Lions Memorial Hall at the new arena. Recent donations approved included \$100 to the Society for the Deaf for food for students in the Toronto deaf walkathon, \$200 to the 2nd Milton Cub Pack, \$85 to sponsor a girls' softball team, and \$50 to the Halton Children's Aid Society.

Plans are being made for the annual Car-o-Rama dance and draw at the new arena Saturday, Sept. 13. Local orchestras Jack Reeves and JC and the Squires have been booked to play the dance.

Several local Lions officers will be attending the District School of Indoctination at Oakville tonight (Wednesday).

Lions Sam Fucille and Ben van de Spyker represented the club at a conference held by the North Halton Association for the Mentally Retarded, at Hornby last week.

PANELAND

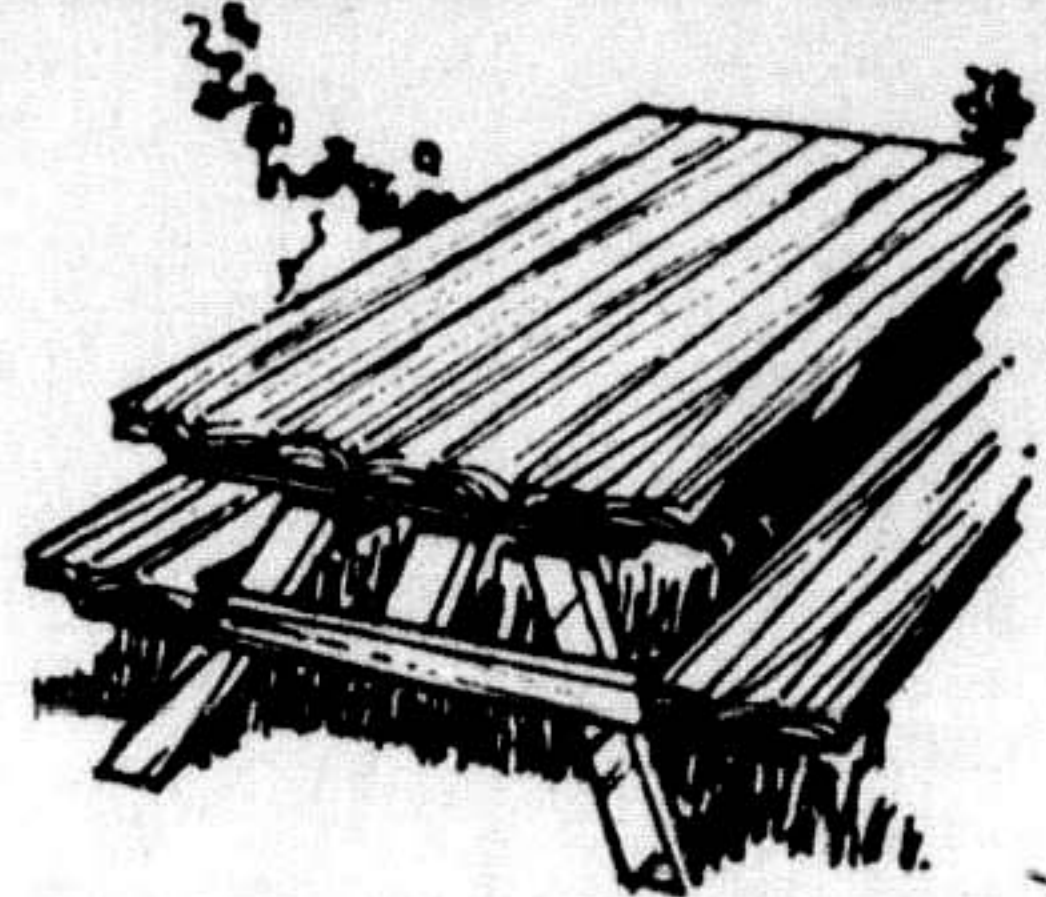
HOME DECORATING CENTRE

25 Steeles Ave., Milton 878-5400 • 878-3263

JUNE 30th IS OUR BUSINESS YEAR'S END. BE SURE TO TAKE ADVANTAGE OF OUR

PRE-INVENTORY STOCK CLEARANCE SALE!

PICNIC TABLE



This 70" Cedar table has 2" thick top and seats. Easily seats 6 people. It is pre-cut and ready for easy assembly in the back yard or at the cottage.

\$29.95 ea.

CEILING TILE SEAFOAM

48" x 48" x 1/4"

Reg. 4.89
\$3.99
a sheet

ODD PANELING SPECIALS

4 Shts. 4x8

HICKORY

3.99
EA.

7 Shts. 4x8

PACIFIC WALNUT

5.29
EA.

5 Shts. 4x8

COLUMBUS PECAN

5.79
EA.

4 Shts. 4x8

SUMMER BIRCH

3.99
EA.

7 Shts. 4x8

BROWN BARN BOARD

5.99
EA.

18 Shts. 4x8

SATIN WALNUT

4.99
EA.

13 Shts. 4x8

LAMINA PECAN

6.29
EA.

ALL JUTE BACK CARPET IN STOCK

Reg. 4.77

NOW ONLY

\$2.99 sq. yd.

POPLAR UNDERLAY

White Poplar Plywood that's good one side, ideal for use as underlay for all floor coverings

4' x 4' x 1/4"

\$2.69 a sheet

QUALITY TOURS AND TRAVEL SERVICE

TED TYLER TRAVEL SERVICE

St. Petersburg's TIDES HOTEL
Choice of All Inclusive Holiday
\$229 P.P. DBLE.
#1 HOLIDAY INCLUDES
• 7 FULL BKFS.
• 7 FULL DINNERS
• 7 NIGHTS ACCOM.
• ROUND TRIP AIR FARE

St. Petersburg's NEW HILTON
from **\$239** P.P. DBLE.
Incl. Air Fare, 7 Nights Hotel, All Efficiencies
FREE HONEYMOON SPECIAL BOTTLE OF CHAMPAGNE & BOWL OF FRUIT & STEAK & EGG BREAKFAST IN ROOM

FORT LAUDERDALE
All inclusive holiday at the **Attache** FROM **\$249** P.P. DBLE.
— YOUR CHOICE —
• 7 FULL BKFS.
• 7 FULL DINNERS
• 7 NIGHTS ACCOMMODATION
• ROUND TRIP AIR FARE
• 4 DAYS FREE GOLF
• 4 DAYS FREE TENNIS
• TRANSFERS

EFFECTIVE DATES: June 29 — August 24
Aug. 31 — Nov. 2 (All Prices Reduced \$10.00)
For further information and reservation call
ACTON 853-1553
MILTON 878-3519
TORONTO 364-1034

TED TYLER TRAVEL SERVICE
ACTON, ONTARIO

PANELAND HOME DECORATING CENTRE

OPEN
7:30 a.m. to 6:00 p.m.
Thurs. & Fri. till 9:00 p.m.
878-5400
878-3263