

78. AUCTION SALES

78. AUCTION SALES
AUCTION SALE
FOR
W. T. ATKINSON
IN THE AGRICULTURAL HALL AT THE FAIRGROUNDS
IN MILTON
THURS. EVENING JUNE 19th
AT 6:30 P.M.

ANTIQUE FURNITURE: Victorian satinwood 6 drawer vanity chest with mirror; Jacobean style oak drop table c. 1865; Vic. carved oak occasional table; ref. pine 2 drawer commode c. 1850; 2-3 drawer pine chests; pine postmasters desk; Vic. oak dresser with marble top; Vic. oak washstand with marble top; J. & H. marble top dresser; unusual Vic. oak bookcase with leaded glass top c. 1854; mahogany hanging shelf with mirror c. 1860; maple sideboard with bevelled glass mirror; oak hall rack with barometer decoration; bamboo hall stand with mirror & shelves c. 1864; Vic. mahogany sideboard with cabriole legs & bevelled glass mirror; small Edwardian oak 2 drawer chest; Vic. oak hall cupboard with 2 doors; mahogany marble top hall stand; pr. of Vic. mahogany writing tables with 2 drawers & leather tops, good ones; mahogany washstand with marble top; maple commode; carved oak hat rack with bevelled glass mirror; Vic. wall mirror in oak frame; four mahogany balloon back chair, reupholstered c. 1862; pressed back nanny's rocker; set of 4 hand carved mahogany high back chairs, c. 1865; Eng. rocking chair; walnut occasional chair; oak hall chair; pr. of side chairs; iceland spinning wheel; Vic. mahogany coal bin with copper and brass fittings; Jacobean oak fire screen; Vic. 'grand point' goblin screen on carved mahogany tripod base c. 1842; small secretary type desk; walnut dining table; pine wardrobe with bevelled mirror door c. 1855; Vic. carved oak min. 3 drawer chest; pr. of captain's chairs.

BRASS, COPPER & MIRRORS: Pr. of brass candlesticks; brass coal helmet; 4 piece brass fireplace set in walnut stand; brass bell; large copper & brass kettle; large copper coach footwarmers, hall marked, c. 1850; 3 solid brass taps; brass coal helmet; copper coal skuttle; Georgian copper kettle; pr. Vic. brass wall plaques; min. brass brush & tray; pr. min. copper jelly moulds; pr. copper candlesticks; small brass bell & coal fongs; large Coke pub mirror; large Rolls Royce pub. mirror; small Coke pub. mirror; small pub mirror—your country.

WATCHES: 14K gold 15 jewel watch in hunter case, c. 1905; 14K gold 15 jewel Elgin watch, same hunter case, c. 1910; gold success watch 15 jewel c. 1915; Waltham gold watch c. 1902; Waltham coin silver 15 jewel watch c. 1902; sterling silver French key watch c. 1860; all watches have been serviced and are in good condition.

CHINA, GLASS, ETC.: Vic. 6 piece floral toilet set; rose pattern pitcher and basin set; ironstone basin; Vic. carved oak candlesticks with brass tops; carved serving tray with 6 brass wine cups; Royal 7 piece fruit set; set of 3 Vic. milk pitchers; 3 Vic. art glass lampshades; 4 piece cruet set; shelf clock in wood case; pr. of signed water colours in gilt frames; Queen Victoria picture in oak frame, 'nothing to fear'; pr. Vic. fine water colours in gilt frames 'signed'; Vic. crockery water filter; several pieces of silver & many unlisted items.

Preview from 4:30 p.m. day of sale—terms cash—lunch available.

Owner or auctioneer not responsible for accidents sale day.

Marg Brown
Jack Lawson, Clerks

AUCTIONEER:
WARD BROWNRIDGE
878-6730
78m-8

81. FOR RENT

Fully Equipped Ultra Modern

ROMA HALL

3090 STEELES AVE., MILTON, ONT.
Make your 1975 bookings now for

DANCES - WEDDINGS - BANQUETS
CONVENTIONS, ETC.

- * Accommodations up to 400
* 80' x 60' dance floor
* Excellent bar facilities and kitchen
* Controlled lighting
* Modern decor
* Fully equipped sound system
* Complete air recycling filter system

For further information & booking arrangements
PLEASE NOTE
CARMELINA SEDITA WILL ACCEPT YOUR
RESERVATIONS AT 878-2460, 8 A.M. TO 6 P.M.
OR 878-6527 OR 878-4903 AFTER 6 P.M. 81mf

OFFICE

Central downtown
Milton

A suite of three bright rooms, ideal for lawyer or professional person, newly renovated and modernized with broadloom and birch panelling throughout, recessed fluorescent lighting, on second floor overlooking the central Main St. Parking at rear. Light and heat included in rent.

PH. 878-2326
81mf

PASTURE land for rent. 878-7165.
81m8-5159

ELECTRIC hot water heaters with free service. Phone Milton Hydro 878-2345.
81mf-1520

83. ROOMS, BOARD WANTED

STUDENT from Quebec with summer employment in Milton, wants to learn English and is looking for room and board for approximately 2 months. Call 878-6051 during the day, evenings 878-8261.
83m8-5060

85. APARTMENTS FOR RENT

ONE and two bedroom apartments available, adults only. Call superintendent, Diplomat Apartments, 878-9565.
85mf-4723

NEWLY decorated one and two bedroom apartments. Glen Eden Court 878-5375.
85m10-4992

85. APARTMENTS FOR RENT

AIR CONDITIONED one bedroom apartment, including new broadloom, drapes, hydro, parking, laundromat, etc. \$155. 224 Martin St., Apt. 301 after 4 p.m.
85mf-4751

ONE BEDROOM apartment in new country home, private entrance and bathroom, kitchenette and living room, fridge, stove. Business or retired couple. \$165. Phone 854-2662.
85m8-5050

ONE bedroom apartment, utilities included. 878-4648.
85m8-5138

ONE bedroom apartment. Fridge, stove, heat and hydro. Milton Court Apartments. 878-3460.
85m8-5040

CAMPBELLVILLE area, 2 bedroom, fully equipped, \$250 per month, utilities included. Vacant as of July 1, 1975. Call 1-416-270-0747.
85m6-4881

NOBLE Towers, one and two bedroom apartments. 878-5841.
85mf-4876

ONE bedroom apartment, \$175 two bedroom apartment, \$195; adults only. 878-5049.
85mf-4193

MODERN one and two bedroom apartments, electric heat and balcony. 878-4216.
85mf-5106

WILL sublet 2 bedroom apartment \$205 a month available. July 18th 878-5968.
85m7-4993

Get quick results with CLASSIFIED ADS

77. LEGAL

NO. 280 A.D. 1973 and NO. 281 A.D. 1973
JUDICIAL SALE
OF PART OF LOT 15, CONCESSION 2
IN THE SUPREME COURT OF ONTARIO
IN THE MATTER OF
The Mechanics' Lien Act,
R.S.O. 1970, Chapter 267

BETWEEN:-
L. J. ZANATTA CONSTRUCTION LIMITED
Plaintiff,
-and-
HALTON PAINT & CHEMICALS LIMITED
and
INDUSTRIAL DEVELOPMENT BANK
Defendants,
AND BETWEEN:-
S. A. FAY & SONS LIMITED
Plaintiff,
-and-
HALTON PAINT & CHEMICALS LIMITED
and
INDUSTRIAL DEVELOPMENT BANK
Defendants.

FORM OF ADVERTISEMENT OF SALE
PURSUANT to the judgment and order for sale made in this cause there will be offered for sale by Public Auction by HIS HONOUR JUDGE J. KENNETH BLAIR, Local Judge of the Supreme Court of Ontario, or his nominee, at 245 Bronte Street North in the Town of Milton, Ontario, On Wednesday the 25th day of June, 1975, at the hour of 2:00 o'clock in the afternoon, the lands and premises known as the southwest half of Lot 15, concession 2, New Survey, Town of Milton, County of Halton, designated as Part 2 on a Reference Plan deposited in the Registry Office for the Registry Division of the County of Halton as Plan 20-R605 together with right of way over that part of said Lot 15 designated as Part 1 in the said Reference Plan 20-R605, all as more particularly described in a deed registered on the 4th day of May, 1973 as Number 360886.

The subject property is said to have an area of approximately 2.3 acres with frontage on the easterly side of Bronte Street of approximately 166 feet.

On the premises is said to be erected a new concrete block industrial building of approximately 6600 square feet, including 1600 square feet of finished offices, with washrooms.

The said premises are municipally known as 245 Bronte Street, North, Milton.

Further particulars and conditions of sale may be had from Nelson, Baines, Bellegem and Steele, Barristers and Solicitors, 132 Mill Street, Halton Hills (Georgetown), Ontario.

DATED at Halton Hills (Georgetown), this 4th day of June 1975.

J. KENNETH BLAIR
Local Judge
77m8

NOTICE TO CREDITORS

IN THE ESTATE OF HARRIET EVELYN COUSINTINE, late of the Town of Milton, in the Regional Municipality of Halton, Widow.

ALL persons having any claims against the above estate are required to send full particulars of such claim to the undersigned on or before the 25th day of June, 1975 after which date the estate assets will be distributed, having regard only to the claims that have then been received.

HUTCHINSON, THOMPSON & HENDERSON, 219 Main Street, Milton, Ontario, L9T1N9
Solicitors for the Executor, Robert W. Foster. 77m8

NOTICE TO CREDITORS AND OTHERS

IN THE ESTATE OF Edward Daniel Mahon, late of the Town of Milton, in the Regional Municipality of Halton, Gentleman.

ALL persons having claims against the above estate are required to send full particulars of such claims to the undersigned Executor on or before the 9th day of July, 1975, after which date the estate's assets will be distributed, having regard only to claims that have then been received.

THE CANADA TRUST COMPANY, 282 Lakeshore Road E., Oakville, Ontario.

Its Solicitors, HUTCHINSON, THOMPSON & HENDERSON, 219 Main Street, Milton, Ontario. 77m10

WANT ADS WORK WONDERS

86. REAL ESTATE

Brethour
REALTY SERVICES LIMITED REALTOR
Homes for living



DORSET PARK

Townhouse with 3 bedrooms, living room, dining area and eat-in kitchen. Includes a games room plus a walkout. Excellent financing. Listed at \$44,000.00. Ask for BETTY INGLE.



EXECUTIVE HOME

Located on the escarpment with a panoramic view. This brick and Tudor style custom built home has features galore, such as 2 fireplaces, 4 bathrooms, main floor family room and laundry room, basement with ground level walk out finished in an English Tudor style with a wet bar and sauna. Added to all this the home is centrally air conditioned and has a 16x32 pool with decking and privacy fence. For the pleasure of viewing please call LES BUNKER.



DORSET PARK

Just listed, this 4 bedroom, side-split has an attached garage, 1 1/2 baths, main floor family room and finished rec. room. Located on a corner lot with a privacy fence. Asking \$63,900.00. For complete details please call BETTY BRADING.



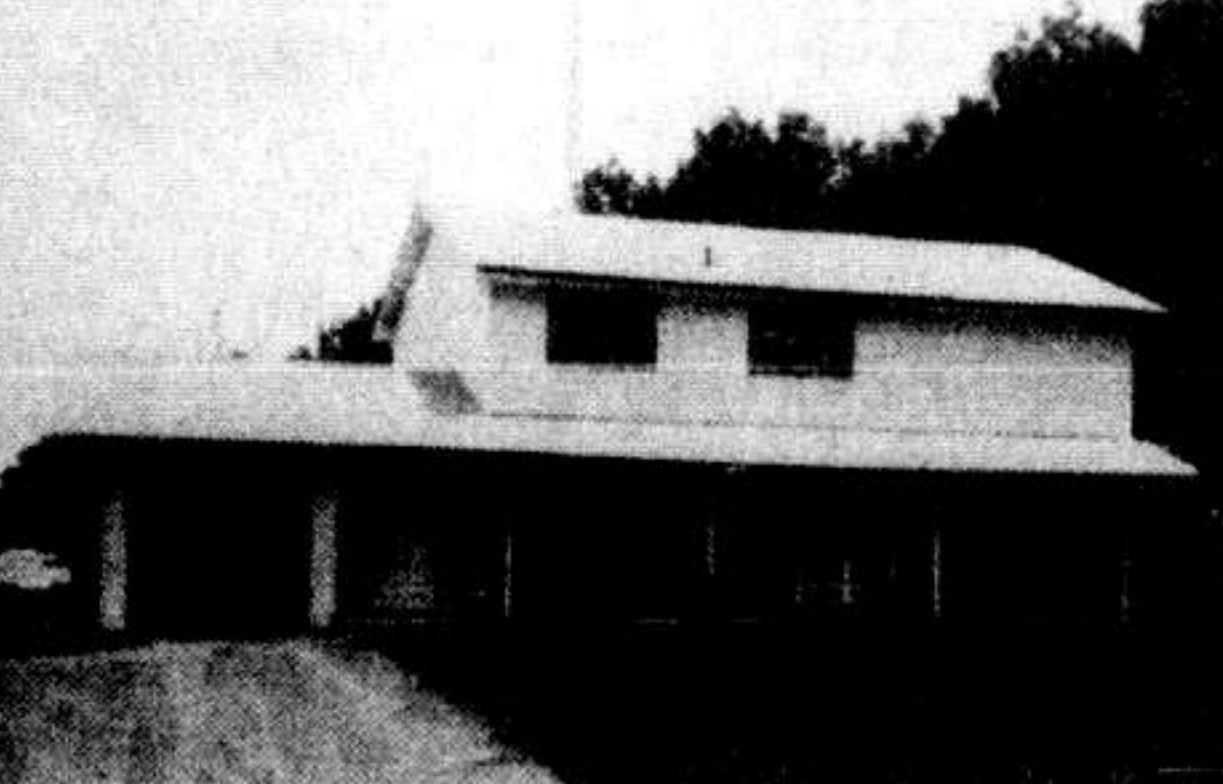
CAMPBELLVILLE

Ranch bungalow with two car attached garage. Offering a 24x15 living room with a fireplace and wall to wall picture windows with a panoramic view for miles. Metal barn 24x40. Located on 10 acres just north of Highway 401. Asking \$125,000.00 with financing available. Please contact "DOC" GOWLAND.



ACTON

Brick bungalow with 3 bedrooms, finished rec room, double garage plus a large work shop for your hobbies. Priced right at \$46,500.00. Contact BETTY INGLE.



STANDARD BRED TRAINING CENTRE

26 acres of paddocks and a 1/2 mile training track, including a custom built two storey, 4 bedroom home with attached garage, plus an above ground pool 16x32 with decking. The metal stable is 80x32 with 18 box stalls and a separate 64x40 hay shed has just been added. If you want a place for your horses and the wife insists on a good home, THIS IS IT. Contact LES BUNKER.

MOBILE HOME
Made by General this 12' x 60' home has two bedrooms, large living room, spacious kitchen and a 4 piece bath. Move it to your lot and set up housekeeping while you build. Asking \$10,000.00. Call LES BUNKER to view.

MILTON BUSINESS OPPORTUNITIES
Established Fabric and Drapery business for sale, phone BETTY INGLE for full particulars.

BUILDING LOT
8 1/4 acres located on 25 Hwy. with a fantastic view in all directions. Offering 785' of frontage, two spring fed streams and an artesian well. Priced to sell with good terms. View this site with LES BUNKER.

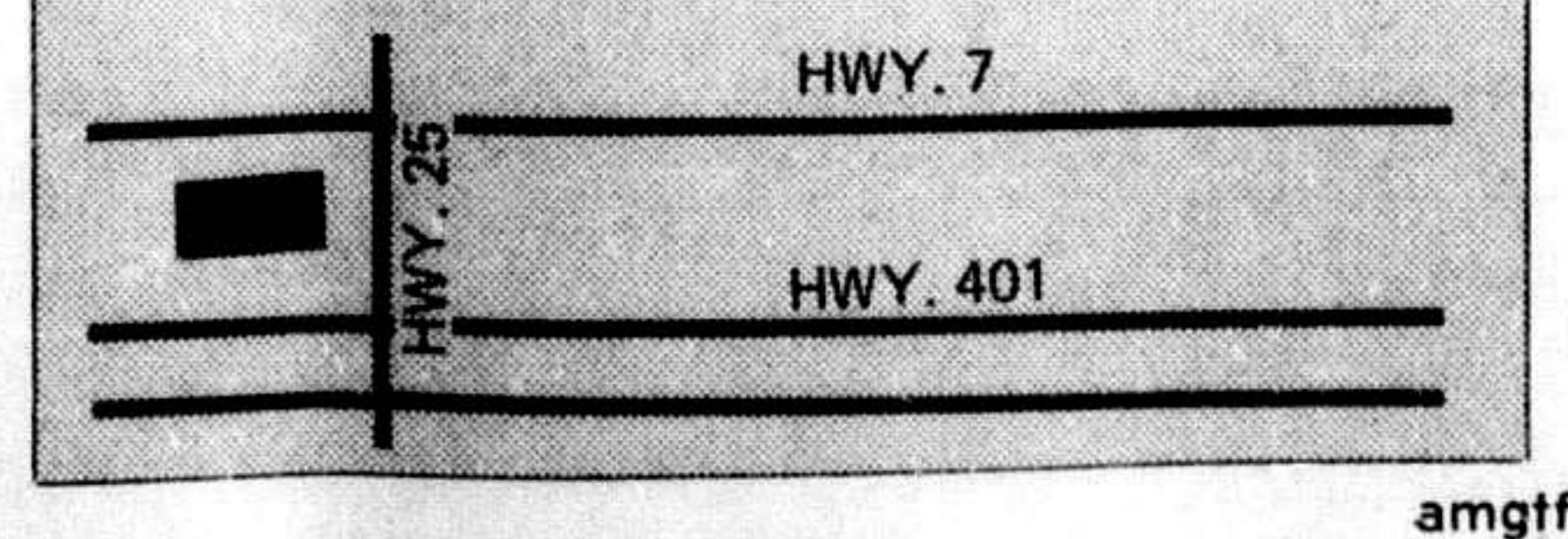
BRETHOUR REALTY SERVICES LTD. REALTOR
MILTON 878-4121 Les Bunker (Manager) Betty Brading Betty Ingle TORONTO 270-9991 "Doc" Gowland

B CROSS B
REAL ESTATE & INSURANCE LTD.
3287 MAIN ST.
R.R. 6
Milton
"Broker"

FOR PROMPT AND COURTEOUS SERVICE ON ALL YOUR REAL ESTATE NEEDS
Residential
Commercial
Industrial
Farms
Sales, Rentals, Mortgages, Insurance
CALL
878-2888
Bob Cross 878-2888 or Lewin Sales 878-9136.
86m8

KINGHAM HILL ESTATES
ACTON
\$53,900 FULL PRICE

INCLUDING PAVED DRIVEWAY FOR FIRST 10 CUSTOMERS.
Large new 2 storey, 4 bedroom homes, built on beautiful private lots. Attached garage, choice of broadloom. Low down payment. 2 months possession.
10 1/2 PERCENT N.H.A. GUARANTEED MORTGAGE.
Call:
ALTEO CONSTRUCTION LTD.
853-0190



Gibson Willoughby
LIMITED REALTOR ESTABLISHED 1900
Takes Pleasure in Announcing the Appointment of Our Area Agent
JAMES F. NEIL, P. AG.
"Edge Croft" 5370 Appleby Line,
R.R. 6, Milton, Ont.
Phone: 878-4226
If you are interested in Buying or Selling
COUNTRY HOMES—ESTATES—FARMS—SCENIC ACREAGES
Contact
JIM NEIL
Phone: 878-4226
GIBSON WILLOUGHBY LIMITED, REALTOR
Town and Country Division
46 Eglinton Ave., E., Toronto M4P 1A6
Phone—487-8161
86m8

North Milton - Speyside
12 Acres
\$176,500.
Attractive 4 bedroom modern 2 storey country home, two fireplaces. Outdoor patio overlooks mature hardwood bush. Separate work shop and coach house. Just minutes from Georgetown GO train and Milton 401 exit. For viewing call Carl Dennis.
Burlington 634-9834 (res.) or Toronto 887-5026.
MOFFAT DUNLAP
Real Estate Limited,
Realtor
86m8

FOR SALE
UNITED TRUST REALTOR

2 MILES FROM MOHAWK
\$139,000. Privacy plus! 2,000 sq. ft. custom built rustic home on 26 picturesque acres. Cathedral ceilinged living room with thermopane window wall and floor to ceiling fireplace. Dining room and master bedroom with sliders to sundeck. Unusual country kitchen, den, covered porch.

CRIEFF-PUSLINCH
\$97,500.. Horse farm, 10 fenced acres. New air-conditioned cement block barn. 11 box stalls and second storey feed area, 3 bedroom brick ranch bungalow, living room, dining room, large kitchen, rec room with fireplace on walkout level and 4th bedroom.

MOFFAT WEST
Super Special! \$69,900. New brick 2 storey on 2 acres. Floor to ceiling fireplace, dividing the spacious living room and dining room with walkout to patio area. Over 2000 sq. ft. 3 bedrooms, den, family room, 2 1/2 baths, kitchen with all appliances.

25TH SIDE ROAD
Spring Special!! 10 beautiful acres, fenced and landscaped with 300 ft. frontage, 30 x 30 ft. pole barn, drilled well, hydro installed. Live in the comfortable 2 bedroom trailer while building. Only \$58,500 Willie Essery (519) 824-5054 or (416) 854-9963.

WILLIE ESSERY
(519) 824-5054
or (416) 854-9963
86m8

CHRISTIE & WOODS
Real Estate Limited
Broker
189 Main Street, Milton
ACTON
3 BEDROOM BRICK, 1 1/2 storey home, broadloom, immaculate condition, garage & breezeway adjoining, corner lot, immediate possession. Call Ross Ballentine 853-2000.

COUNTRY
13 ACRES:
Adjacent to Town limits, 6 acres treed, balance level clay loam, 2 minutes to 401 interchange. 1 1/2 storey 3 bedroom home. Asking \$75,000. Mortgage to be arranged.
KILBRIDE AREA:
21 acres, corner property, garden soil, 2 acres bush, excellent commuting. Asking \$79,000. Call Tom Ormesher 878-2095. Res. (519) 855-4439.

ERIN TOWNSHIP. 98 ACRES
Prices are Definitely Lower! Rolling land, corner farm just reduced 10 per cent, 8 room insul brick house, Dutch clean, barn, 2 streams, 60 acres workable, good commuting property which must be sold. Asking \$99,000. with terms. Call Tom Ormesher Res. (519) 855-4439 Office (416) 878-2095.

RENTAL:
Land to rent, 50 vacant acres, \$20.00 per acre.
Call
878-2095 878-6057
86m7

For more Real Estate... see page 18