

ROYAL LEPAGE
Meadowtowne Realty, Brokerage
Independently Owned and Operated



ROYAL LEPAGE ME
905-878-8101 **475 MAIN ST.**

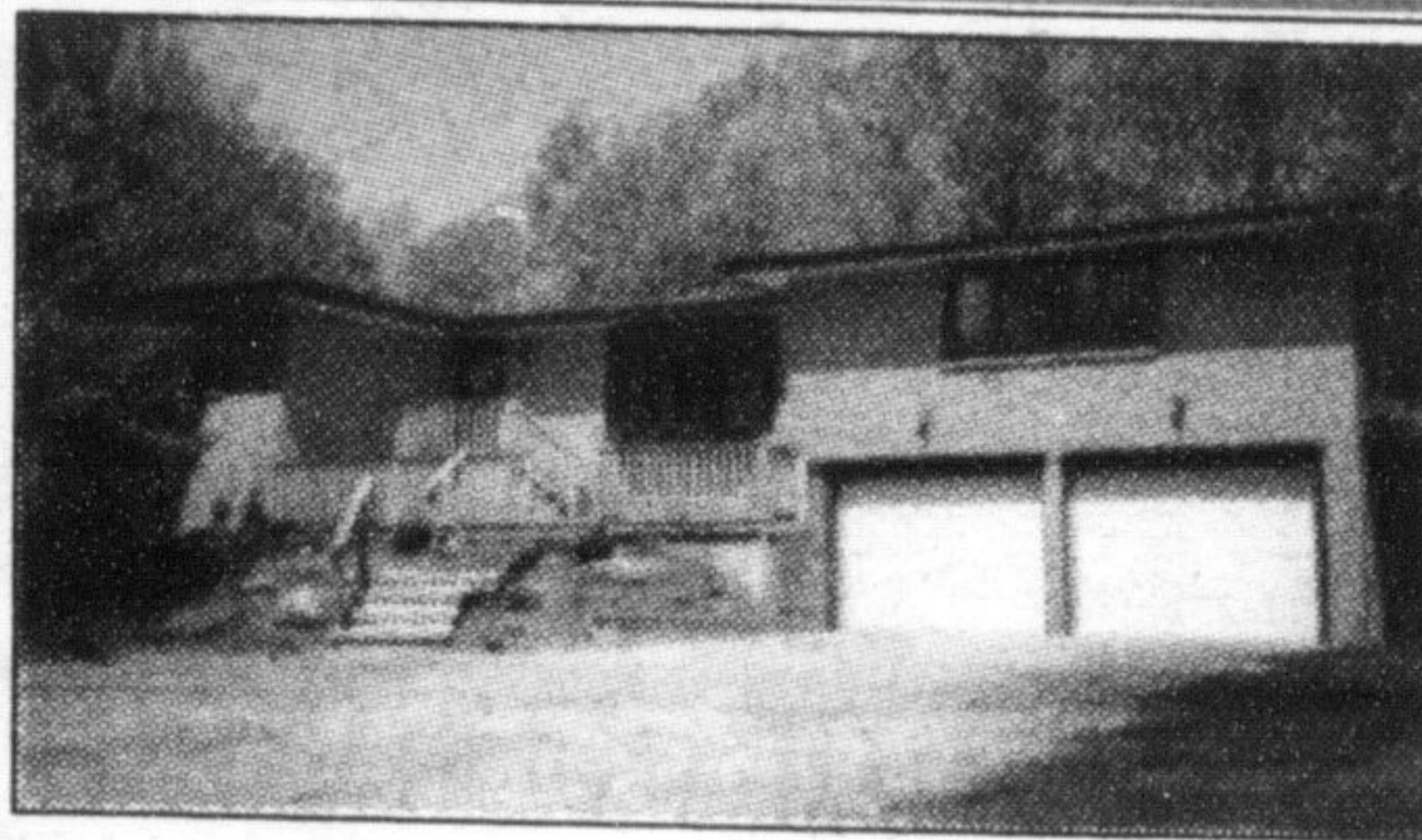


Carole D. Budworth*
905-878-8101



Honest. Professional. Trustworthy. Hard Working.

FABULOUS OPPORTUNITY!



To move to your own private 10 acre Campbellville horse/hobby farm only minutes to 401 and Mohawk Raceway. State of the art barn with its own

driveway entry, 4 acres of paddocks. Renovated bungalow set well back from the road. Gorgeous wooded views from the rear wrap around deck and from the extensive front deck. Roof, windows, furnace, kitchen, decks all replaced. Double garage with inside entry, parking for numerous cars, 2 fireplaces, rec. room, games room, workshop. Walk-out from basement. **Priced at \$749,000.00.**

ALL MY LISTINGS ARE SELLING AND I AM READY TO LIST YOUR HOME WHENEVER YOU ARE READY. I WILL NEGOTIATE THE BEST POSSIBLE PRICE AND THE SHORTEST POSSIBLE TIME. I CAN PUT A SOLD SIGN ON YOUR LAWN! Give Me A Call For A Complimentary Home Evaluation!

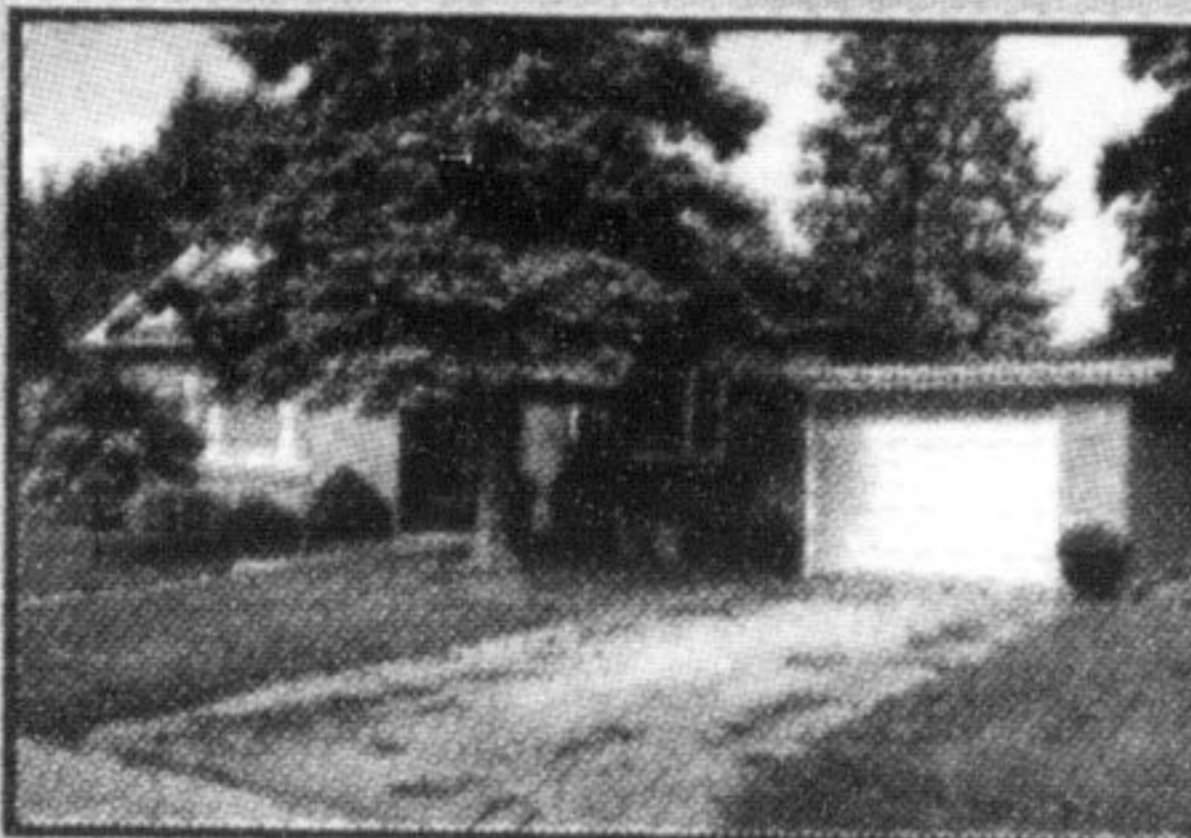


Eva Gooding*
Sales Representative

Office **905-878-8101**
Direct **905-691-2401**



BRAND NEW...
Fresh new look in a sought after prime area, in amongst executive homes, and awaiting your personal touches, from the porch you'll be introduced to both an interior and exterior showplace, gourmet style kitchen with dark espresso stained cupboards with five appliances included, separate formal dining room, some hardwood floors, full master bathroom, move in as early as you wish. Welcome home to an upscale Mattamy Village Vista home. **Listed at \$389,900 Call Eva Gooding.**



AMIDST THE CHARM...
In the quaint town of Acton, a short walk to charming downtown dining, shopping, and schools, single garage, private freshly landscaped backyard including extensive gardens, fencing, recent garden doors from main floor family room opening to patio, many impressive renovations, original hardwood, combined living and formal dining rooms, fun for entertaining. Ideal for a first time buyer. **Listed at \$279,900 Call Eva Gooding.**



HAWTHORNE VILLAGE...
Prime freehold end unit residence with private driveway, porch, stone patio and walkway, industry leading craftsmanship from the warm exterior design to the attractive interior, jatoba brazilian cherrywood throughout the house, gas fireplace in living room, and central air conditioning are a few of the bonuses. **Listed at \$329,900 Call Eva Gooding to view.**



ON THE EDGE OF CAMPBELLVILLE...
Backs on to mature forest, neighbours beside a park, total privacy with a turnaround treed laneway, many redesigns and renovations with modern interior conveniences right down to the smallest finishes and detailing, recent kitchen, finished lower level with fireplace, potential for extended family living quarters, within a network of conservation areas and parks, explore the varieties of outdoor adventure and close proximity of major transportation routes. **Listed at \$475,900 Call Eva Gooding to view.**

Helping You Find Your Home Sweet Home
Call A **Milton Champion Realtor** Today!



Kim Coulter*
Sales Representative

905-691-1148
Direct Line



TIMBERLEA TREASURE!

Amazing 50' X 152' Lot with Inground Pool and Fruit Trees Galore! 4+2 Bedrooms, 3.5 Bathrooms, Main Floor Family Room with F/P, Main Floor Laundry, Double Garage. Many updates!

Call Kim Coulter at 905-691-1148

\$474,900



Diane Maynard

905-878-8101

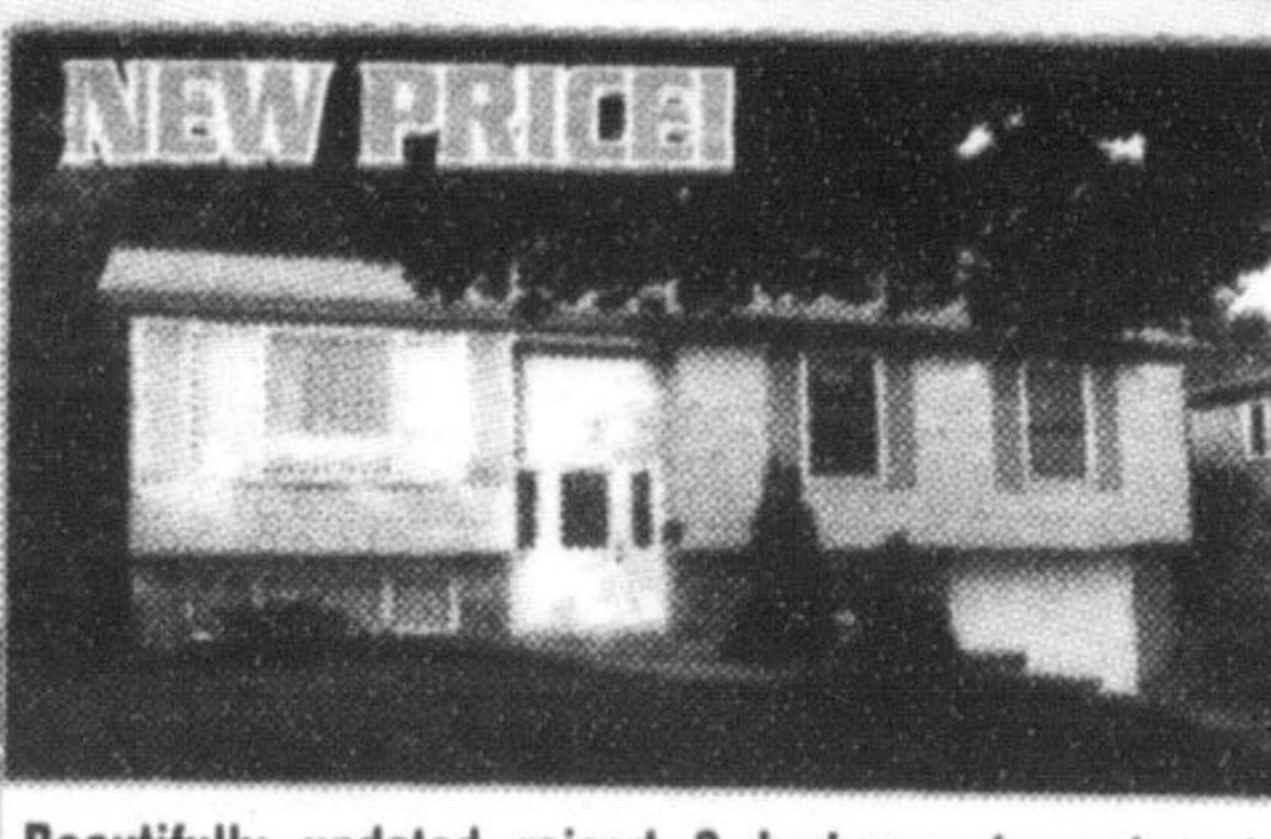
Susan Recoskie



DRIVE A LITTLE SAVE A LOT

Bright open concept townhouse with 3 bedrooms, 1 1/2 baths, full unspoiled walkout basement in desirable area of Guelph.

Listed at **\$229,900**



NEW PRICE!

Beautifully updated raised 3 bedroom bungalow in desirable area of Burlington, backing onto park. Combo living and dining room, eat-in kitchen with walkout to backyard. Familyroom on lower level with gas fireplace and loads of windows. Also in the lower level in computer/den area plus a new 3 pc washroom. Super curb appeal with new paved double driveway.

Listed at **\$349,900**

Don't Gamble

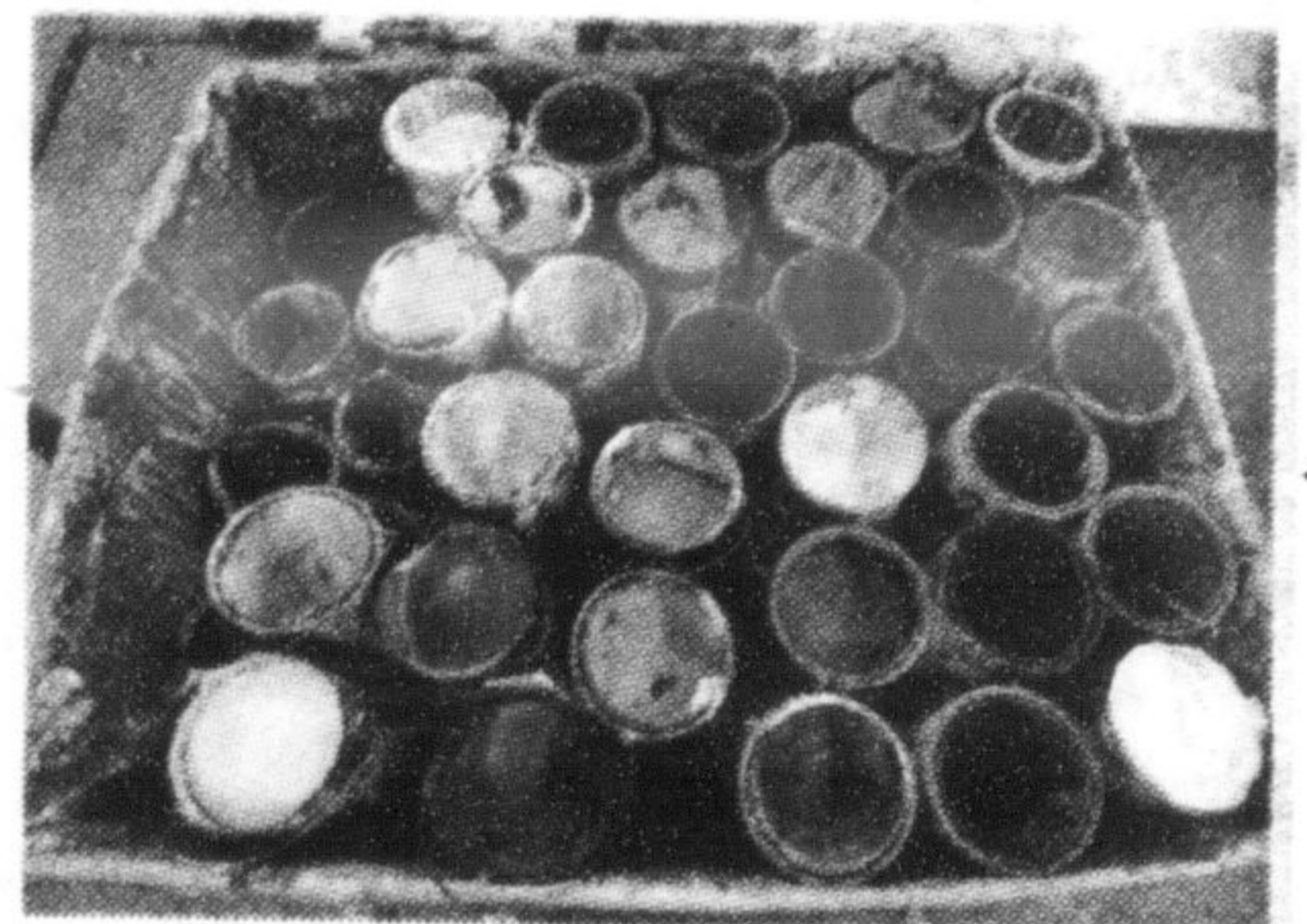
with the SALE OF YOUR HOUSE!
Call a Local Realtor Today.

It's time for Ontario residents to clean house

Provincial program aims to get Ontarians to stop hoarding household hazardous and special waste materials.

Old paint cans, motor oils and pharmaceuticals are among the items helping to turn Ontario homes into wastelands. While residents are doing a good job of recycling waste headed for Blue and Green bin programs, items that shouldn't go in the garbage and require special handling often end up gathering dust in cupboards, drawers and garages.

Building regular material drop offs into Ontarians' already successful recycling routines is the goal of a new campaign spearheaded by Stewardship Ontario, the organization responsible for the Blue Box Program Plan. The campaign, called Orange Drop, takes recycling beyond the driveway by urging Ontario residents to use designated drop off zones for special waste items including pharmaceuticals, cleaners, batteries and other materials. In landfills, besides taking up space, these materials can contaminate the soil and ground water, eventually making it into rivers, lakes and wildlife.



Orange Drop builds on the foundation created by the first MHSW (Municipal Hazardous or Special Waste) program, Do What You Can, that was launched in 2008. The original program implemented an environmentally-safe recycling and disposal routine for nine special waste items. Orange Drop adds 13 new items to the list of hazardous and special waste materials designated for collection, recycling and safe disposal. To accommodate the new items the province is utilizing the more than 92 municipal recycling depots and 238 return-to-retail collection counters, as well as including the broad network of Call2Recycle battery collection drop offs as part of the Orange Drop program. There are also many special collection events held throughout communities across Ontario. For certain special waste items like pharmaceuticals, sharps and syringes, it's not just a matter of environmental safety, but also public safety. Orange Drop will work with the more than 2,700 Ontario pharmacies to collect these materials ensuring that consumers have access to dispose of these materials safely.

Last year nearly 30,000 tonnes of hazardous and special waste materials were dropped off at recycling depots across the province. This included over 11,000 tonnes of paints, 571 tonnes of batteries, almost 11,000 tonnes of oil filters, and 1,028 tonnes of pressurized containers.

While this is significant, there is still much more work to be done. Stewardship Ontario estimates that the 1,232 tonnes of oil containers and 400 tonnes of solvents that were recycled represent only a fraction of what Ontarians actually used. As a result, these materials are making their way to landfills or languishing in homes.

"Ontarians have already demonstrated they are willing to recycle these materials," said Lyle Clarke, vice president of operations at Stewardship Ontario. "We need Ontario residents to start thinking about these items the way they do for the Blue or Green Bin programs, recognize what is an Orange Drop recyclable and understand how to dispose of them appropriately."

New items accepted in the Orange Drop program include: syringes and sharps, paint brushes, batteries, car batteries, prescriptions, over-the-counter medicines, oil filters, CFL light bulbs, pesticides, pressurized containers, toxics displaying the "crossbones" symbol and reactives.

A complete list of products and locations can be found online at www.makethedrop.ca.

www.newscanada.com