

**ROYAL LEPAGE**  
Meadowtowne Realty, Brokerage  
Independently Owned and Operated

**ROYAL LEPAGE MEA**  
905-878-8101 475 MAIN ST.

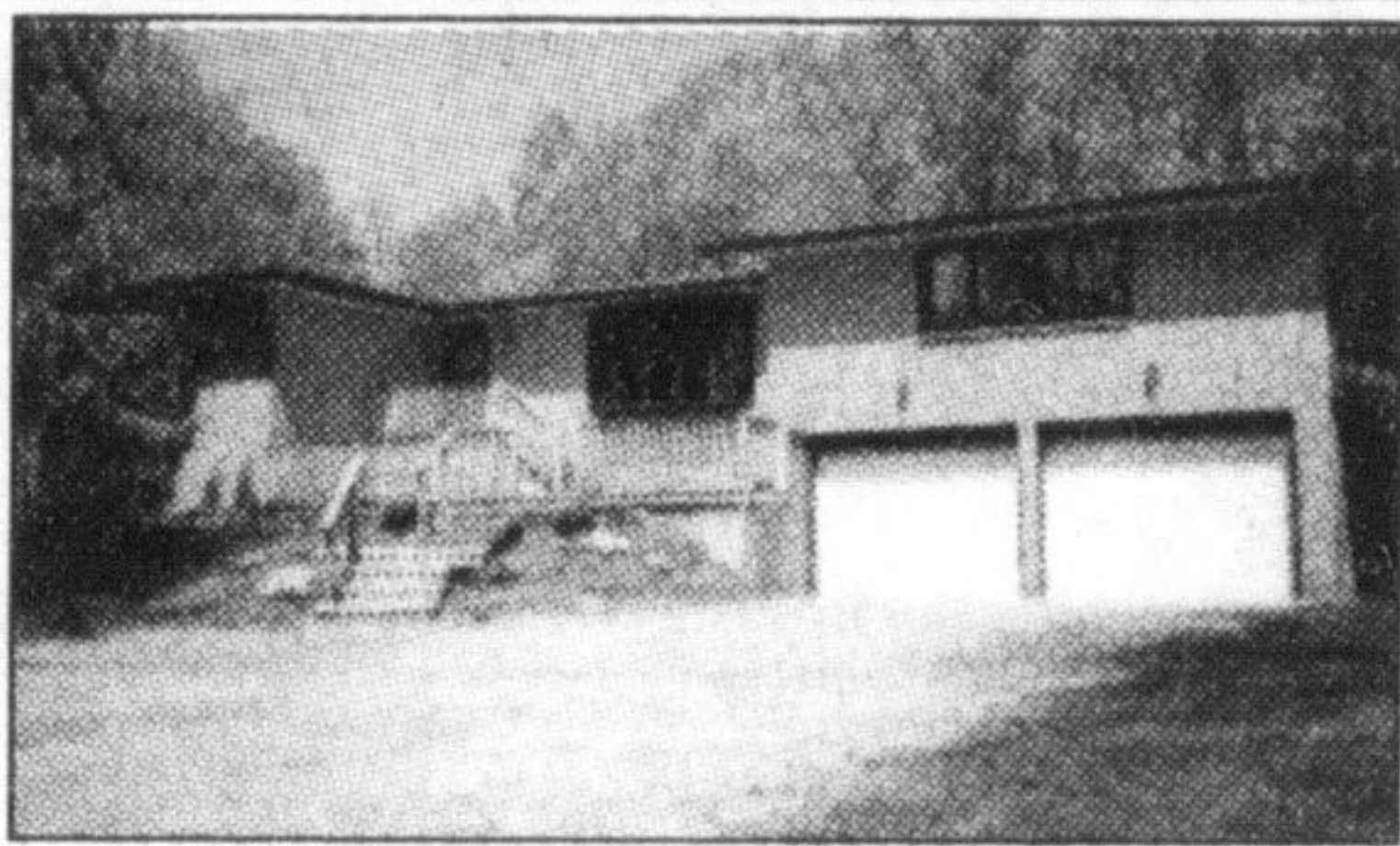


**Carole D. Budworth\***  
905-878-8101



*Honest. Professional. Trustworthy. Hard Working.*

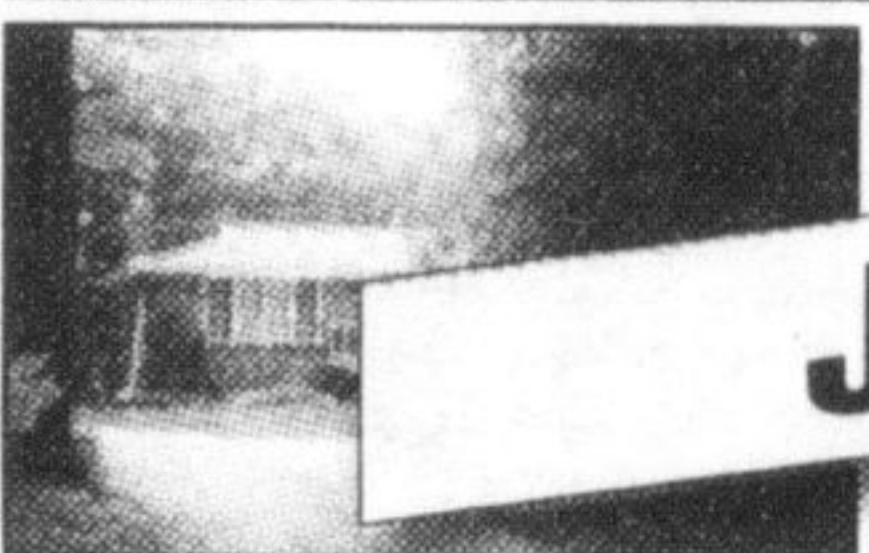
**10 ACRE HORSE FARM**



Great 10+ acre property in Niagara Escarpment. Well renovated bungalow with double garage and inside entry. Dream kit overlooking family room with fireplace, large L.R. and D.R. Finished lower level with fireplace, rec. room,

games room, craft room and work shop. Gorgeous decks front and back overlooking the scenic cleared and wooded property. Hobby/horse/business operation with barn, paddocks, separate driveway to barn. Don't miss this one. Priced at \$749,000.00.

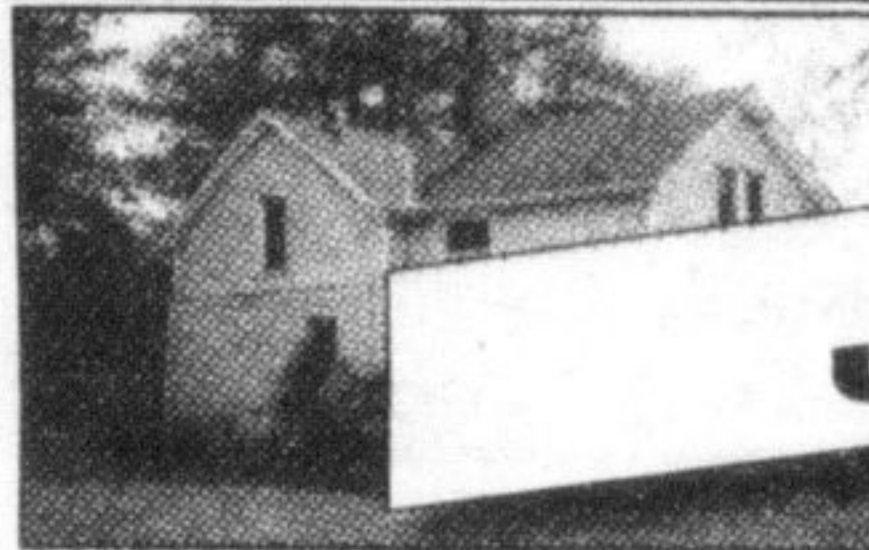
**HOT OFF THE PRESS**



**JUST SOLD**

Great opportunity to own your own piece of country heaven located in Campbellville and Lowville. Attractive 1 1/2 storey, front porch, new windows, roof, new flooring throughout main level, new kitchen, many upgrades. Lower level family room with walk-out plus full nanny or in-law 2 bdrm. apt. with separate entrance, new kit, L.R., D.R. and bath. Heating has been converted to natural gas with a natural gas fireplace in the main level living room. Priced for quick sale at \$379,900. Don't miss this home and call today for further details.

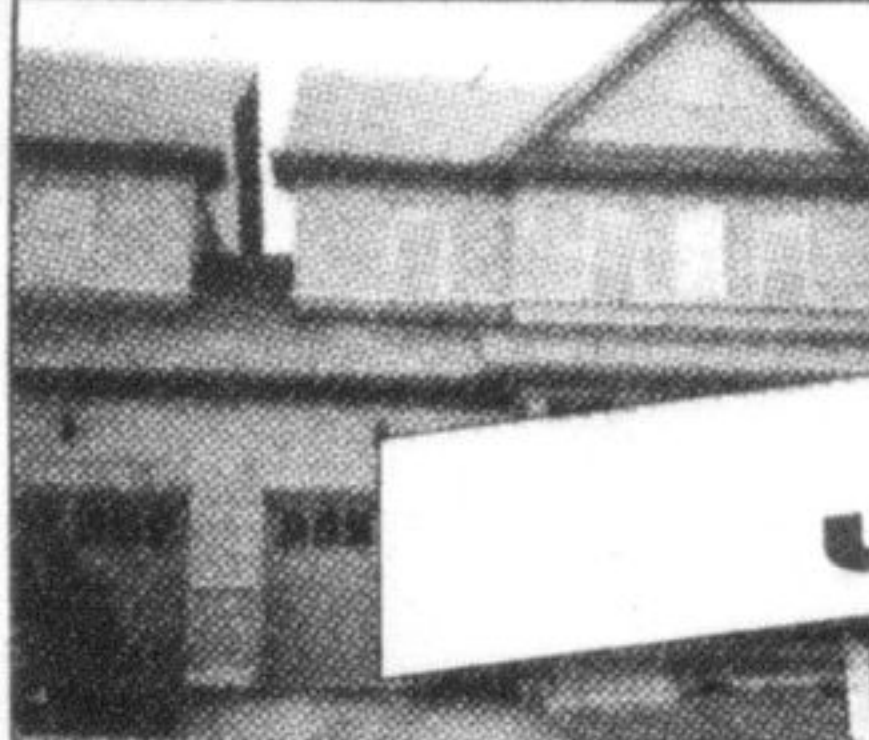
**HOT OFF THE PRESS**



**JUST SOLD**

Stunning 2 acre gorgeous property atop the escarpment. One of all major features including 1 1/2 storey, new kitchen, dining room, newer windows, roof, siding, oil tank. Oversized detached garage/workshop. Priced to sell quickly at a very affordable price of \$364,900.

**HOT OFF THE PRESS**



**JUST SOLD**

Beautifully done semi, 1855 sq. ft. Arista Turner model home. Gleaming dark hardwood in living room, dining room, kitchen with granite counter tops. Fam. rm. with fireplace. Master bedroom has upgraded ensuite with glass shower, walk in closet. Central vac and central air, natural gas barbecue hook-up. Includes all st. appliances and window coverings. Move right in and enjoy this lovely upgraded home. Call Carole for more details. Priced to sell at \$386,900. Quick closing available if desired.

**ALL MY LISTINGS ARE SELLING QUICKLY AND I AM ALWAYS READY, WILLING AND ABLE TO MARKET YOUR HOME WITH THE UTMOST CARE IN 2010!**  
**I CAN PUT A SOLD SIGN ON YOUR LAWN!**  
**Give Me A Call For A Complimentary Home Evaluation!**



**Diane Maynard\***

905-878-8101

Susan Recoskie



**COMING SOON!**

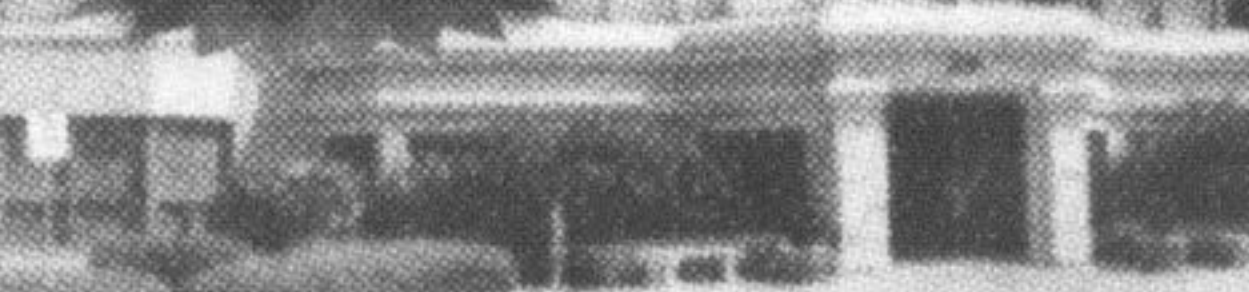
**3 BEDROOM TOWNHOME** with walkout basement and attached garage. Worth the drive to Guelph.

**NEW PRICE!**



Beautifully updated raised 3 bedroom bungalow in desirable area of Burlington, backing onto park. Combo living and dining room, eat-in kitchen with walkout to backyard. Familyroom on lower level with gas fireplace and loads of windows. Also in the lower level in computer/den area plus a new 3 pc washroom. Super curb appeal with new paved double driveway.

**SOLD**



Spotless 1 bedroom apt. in the heart of Milton. Professionally painted, laminate floors, new counter top, washer, dryer, fridge & stove. A beautiful stroll to Mill Pond.

Listed at **\$209,900**

Listed at **\$349,900**

**Your COUNTRY REACH HOMES**

905-878-2341 ext 212  
555 Industrial Dr., Milton, Ontario L9T 5E1

Before you spend your hard earned advertising dollars, you should know the answers to the following questions...

**The 5 "W's"**

**WHO...** is producing your advertising vehicle? Do they have the expertise? Proven readership? Are their rates realistic and sustainable over time?

**WHAT...** does the medium look like? Is it substantial? Quality? A good-looking product that will make people read it before tossing in the blue box?

**WHEN...** will the product be delivered? Has it proven to be delivered on time and when scheduled?

**WHERE...** will the product be delivered? Do you know which postal areas or FSA's it's supposed to go to? Is it guaranteed and officially audited to prove it reaches all the households promised?

**Why...** would you advertise with without the answers to the above questions?

**Metroland's Community of Newspapers** believe we have the answers you seek...

**Who...** Metroland's Community of Newspapers have consistently delivered proven, audited readership results

**What...** We have produced award winning newspapers, honoured for excellence in community coverage and service, design, readability and results. Country Reach section in the Canadian Champion and Georgetown Independent newspapers have house listings that are updated weekly by local agents and brokers!

**When...** Delivery guaranteed and audited circulation, going where we say it's going and when... Twice weekly!

**Where...** Every home, every doorstep! We are the only publication guaranteeing blanket coverage of your markets.

**Ever alert to changing market forces and needs, we have expanded our reach with the Country Reach page to stretch your branding exposure from Milton in the south, to Campbellville, Hornby, Georgetown, Acton, Limehouse, Norval, Terra Cotta, Ballinafad, Rurals North of Huttonville, Erin, RR#2, for a total circulation of 54,378 homes...all for one LOW, AFFORDABLE price!**

**WHY...** would you put your advertising dollars with anyone but a proven performer... **Metroland's Community of Newspapers.**

Call Diane Wolstenholme 905-878-2341 x 212  
email dianew@miltoncanadianchampion.com

The Canadian Champion THE INDEPENDENT  
CNA Named Canada's Top Community Newspaper

\* Kubas Readership Study 2008 \*\* Ontario Community Newspaper Association, Suburban Newspapers of America \*\*\* Canadian Circulation Audit Bureau

Milton, Campbellville, Hornby, Georgetown, Acton, Limehouse, Norval, Terra Cotta, Ballinafad, Rurals North of Huttonville, Erin RR#2

**Your Country Reach**  
Delivered to **54,378** homes per week!

**CALL TODAY!**  
Maximum 3 Listings.



The Canadian Champion THE INDEPENDENT & FREE PRESS Metroland Media Group Ltd.



**Eva Gooding\***  
Sales Representative

Office 905-878-8101  
Direct 905-691-2401

**MATTAMY'S CROFTSIDE END UNIT**



Mattamy's Croftside End Unit With Private Driveway, Jatoba Brazilian Cherrywood Floors Throughout The House, Gas Fireplace, Door Entry From Garage, Stonewalkway In Front, Landscaped Yard, Pot Lights, Freshly Painted Throughout, Central Air, Recent Wide Baseboards. Priced At \$329,900 Call Eva Gooding to view.



Located on the north edge of the quaint hamlet of Brookville. This 3 plus bungalow on over an acre of property, backs onto a mature forest with total privacy on both sides. With a turnaround laneway, several recent renovations, including recent kitchen cabinetry, flooring, updated washroom, finished lower level w/ fireplace, and potential for in-law suite rounds out this beautiful home. Close proximity to 401, conservation areas and parks. Priced at \$483,900 Call Eva Gooding to view.

**MATTAMYS "SPIRIT HOME"**

industry leading craftsmanship, very appealing exterior design with a warm attractive interior, right down to the smallest finishes and detailing, Gourmet style kitchen with Upgraded Cabinetry, separate formal dining room, Master Ensuite, in one of the most sought after family friendly neighbourhoods!

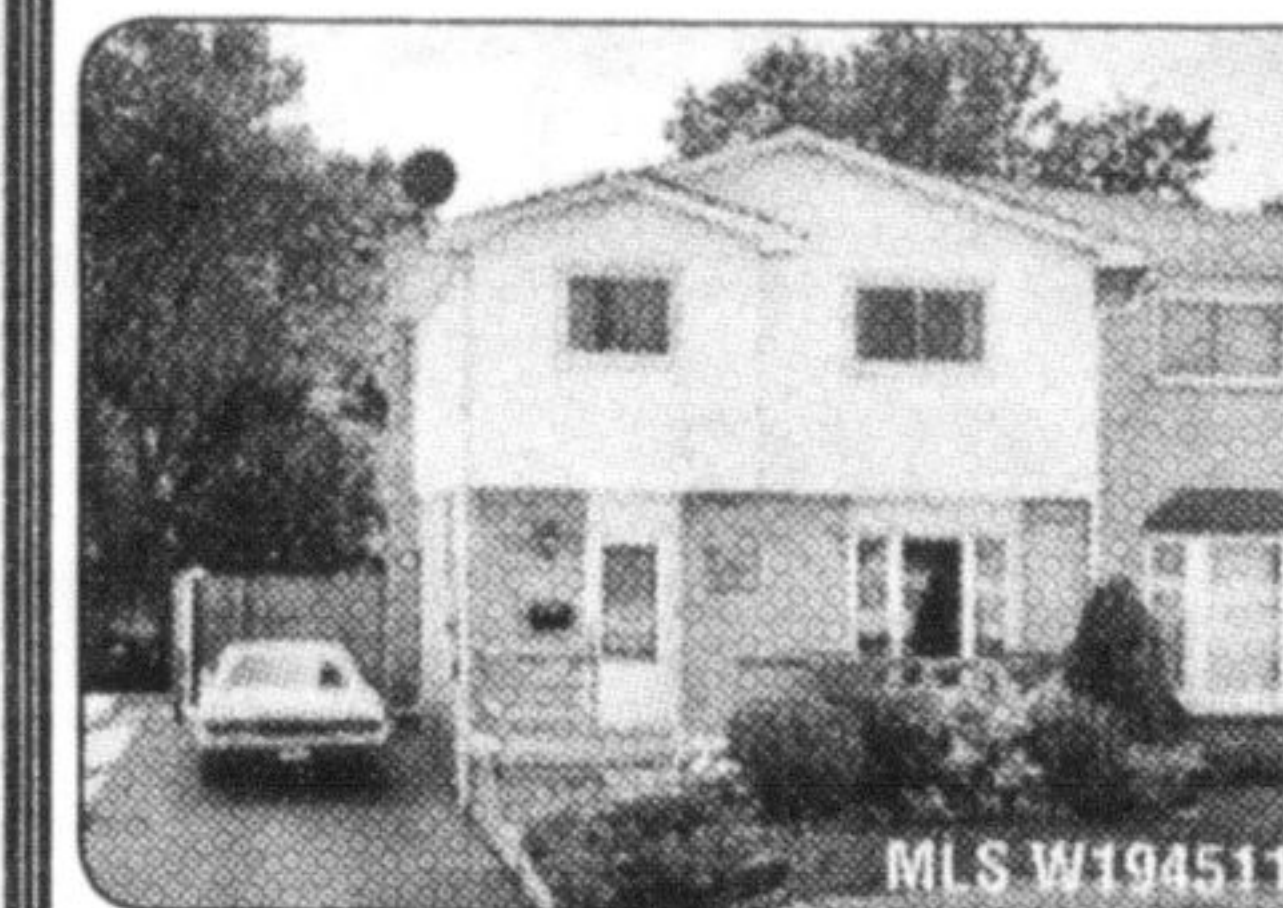


Listed at \$389,900 Call Eva Gooding.



**Kim Coulter\***  
Sales Representative

905-691-1148  
Direct Line



**SUPER SEMI!**  
Fantastic semi-detached completely renovated with 4+1 bedrooms, 3 bathrooms, fully finished basement with in-law suite potential (separate entrance). Updates incl furnace & a/c, driveway, kitchen, s/s appliances, windows, deck, baths, flooring, hut tub. Move-in and enjoy. Great value at \$309,900! Call Kim Coulter at 905-691-1148.

Call Kim Coulter at 905-691-1148

**\$309,900**



**Sandy Del Papa\***

**AN ACCREDITED "HOME STAGING" PROFESSIONAL**



**MAPLE CROSSING CONDO**  
New Price! Stunning Condo overlooking pond. Spacious 'Hampton' model. (Approx 900 sq. ft.) Call today! MLS#2020816



**NEW PRICE!**  
Amazing value for a 2-storey detached\* 3 bdrm home with fin. lower level. MLS#3030050 \*Linked underground