

**MINMAXX**  
 #1 FOR TEAM BUYERS  
 WIN FREE LISTING  
 CALL TODAY OR VISIT ONLINE FOR DETAILS!  
 minmaxx.com  
 264-1111

# The Canadian Champion

Milton's Community Newspaper Since 1860

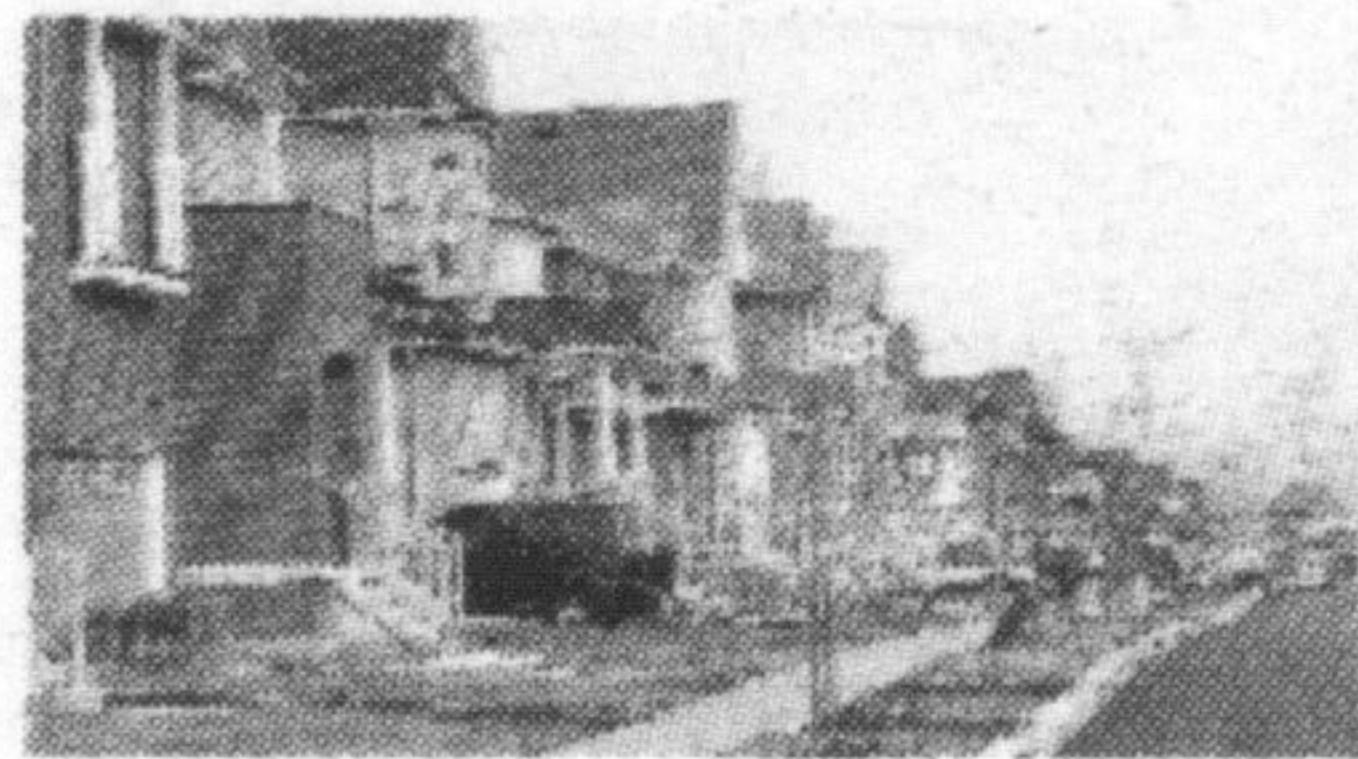
CNA Named Canada's Top Community Newspaper

www.miltoncanadianchampion.com

Unzips September 28th  
 See Page 5  
 Be the first to drive one.  
 Micros Scion

REAL ESTATE

See what's on the market inside



SPORTS

Milltown FC back on top



COMMUNITY

Keeping Terry's dream alive

A Metroland Media Group publication • Vol. 151 No. 56

Tuesday, September 21, 2010

36 Pages • \$1.00 (incl. G.S.T.)



GRAHAM PAINE / CANADIAN CHAMPION

**RIDE TO REMEMBER:** Cyclists leave Kelso Conservation Area Sunday for the annual Greg's Ride memorial event for OPP Sgt. Greg Stobbart, who was killed in 2006 while cycling on Tremaine Road, just north of Derry Road. The ride drew hundreds of cyclists, who chose from three route lengths, 30, 60 and 120 km. Here, Eleanor McMahon (far right), Stobbart's widow, leads cyclists out of the park with friend Tamara Wellbourn. The ride raises awareness about the importance of road safety for both motorists and cyclists.

## \$2M pot haul; five charged

By Lisa Tallyn  
 METROLAND MEDIA GROUP

Five people are facing charges after Halton police seized about 1,500 marijuana plants with an estimated street value of \$2 million in grow operations, most of them outdoors, throughout Halton over the past few weeks.

Police unveiled a cube van full of the large plants to the media Friday at the 20 Division police station in Oakville, and said they had seized another tractor-trailer full of plants.

Det. Sgt. Nishan Duraipapp of Halton Police Drugs and Morality Unit said most of the grow operations were found in rural areas in Halton Hills and Milton, but police also seized plants in Burlington and Oakville.

In July police asked the community to be on the lookout for outdoor marijuana grow operations and received numerous tips about suspicious activity and possible illegal grow operations.

The tips and information from other police investigations resulted in police finding about 20 grow operations. Police undertook an extensive outdoor eradication initiative throughout the rural areas Tuesday.

"Many of these locations are rural locations. They are quite  
 • see **LARGE** on page A10

**Brancier** JEWELLER • GEMOLOGIST

FREE PANDORA BRACELET  
 SEPT 23 - 25, 2010  
 \*with the purchase of \$150 of Pandora charms

**PANDORA**  
 THE ORIGINAL CHARM BRACELET

Milton Mall 876-4367 WWW.BRANCIER.COM Since 1930

MILTON SCION  
 Unzips September 28th  
 Be the first to drive one.

1245 STEELES AVENUE EAST, MILTON • 905.875.1700