

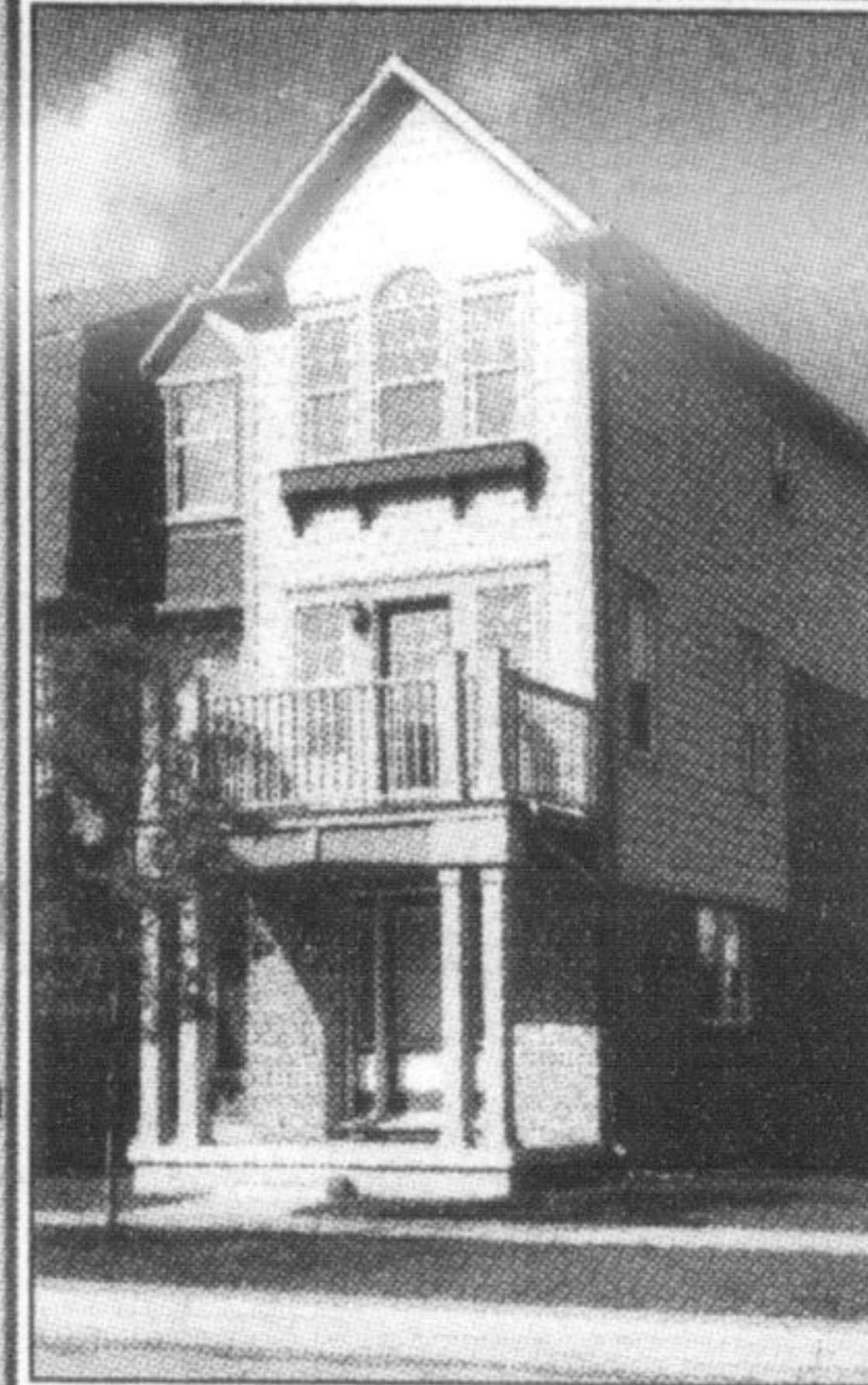


Chris Lightfoot
Sales Rep.

905-876-7979
905-878-8101
www.chrislightfoot.ca

ROYAL LEPAGE

Meadowtown Realty
Independently Owned and Operated



OPEN HOUSE
Sat & Sun 2-4pm
669 Holly Ave.
Townhome Treat!
\$379,900

Look no further! Fantastic Mattamy 'Kingsbury' A model, over 1800 sq ft. Rare end-unit 3-bedroom, 3 bath townhome with over \$10k in upgrades! Bright eat-in kitchen w/upgraded cabinetry, centre island, ceramic backsplash and floors. Huge open-concept living/dining room, double car garage, main floor home office/studio, 19 x 11 back patio w/ gas BBQ hookup, master bedroom feat ensuite bath, walk-in closet and much more! Close to new schools, shops and transit- beautiful layout, great location! Call Chris today for your private showing, and visit www.chrislightfoot.ca for more photos! \$379,900.

Want to target your message

Do you want to reach the new home owners in town or are you interested in the older part of town, or both.

We can deliver your flyer to the exact demographics you want to reach.

\$50 PER 1,000 FLYERS

Champion

For your next flyer drop call:
Diane Wolstenholme,
Sales Representative
at 905-878-2341 ext. 212
dianew@miltoncanadianchampion.com



Barb King & Jim King
Broker Admin. Asst.

The King Team

CARING FOR YOU WITH INTEGRITY!

905-878-7777 24hr paging
Cell: 905-320-BARB (2272)

OR 1-877-878-7729

Email: barb_king@look.ca



Virtual Tour on All Properties



NEW LISTING
MLS#2020873

LOADS OF UPGRADES

3 Month NEW Mattamy 'Hazelnut' approx 2,746 sqft (APBP) All Brick/Stone on Quiet Cres. 4 Bed+3 Bath. 9 Ceilings. Oak Stairs+Hardwood Flrs on both levels. Neutral Angled Ceramics. Spacious Eat-in Kit w/All SS Appl's. Granite Countertops. Potlights. Main Flr Fam Rm w/Gas FP. King-size Master w/5 pce Ensuite(sep shwr) 2 Lg Walk-in Closets. Bedrm w/Ensuite Privileges. 2nd Flr Laundry. AC. Garage Entry. Asking \$589,888.

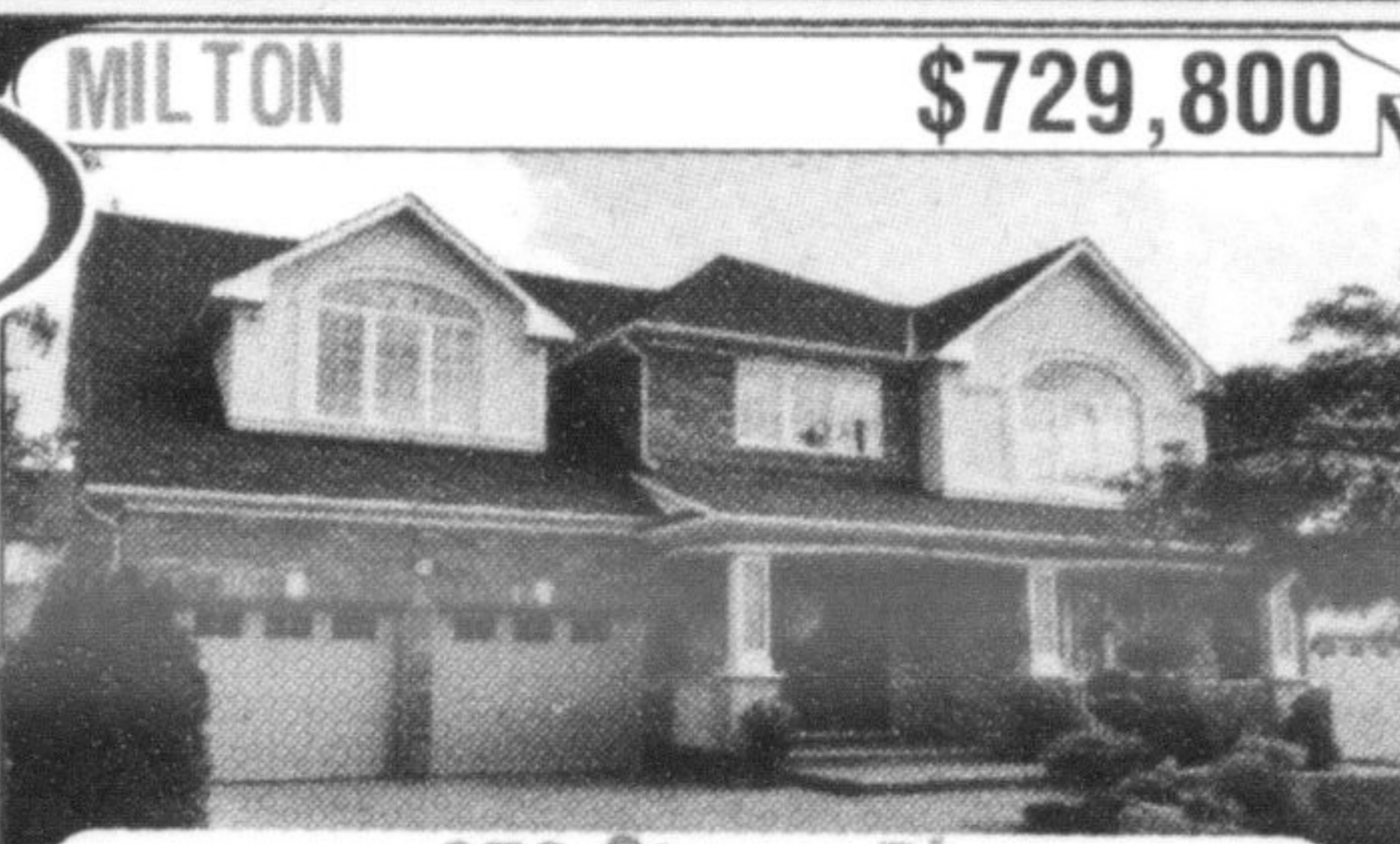
We live here, We work here, We know your housing market!

www.BarbKing.com

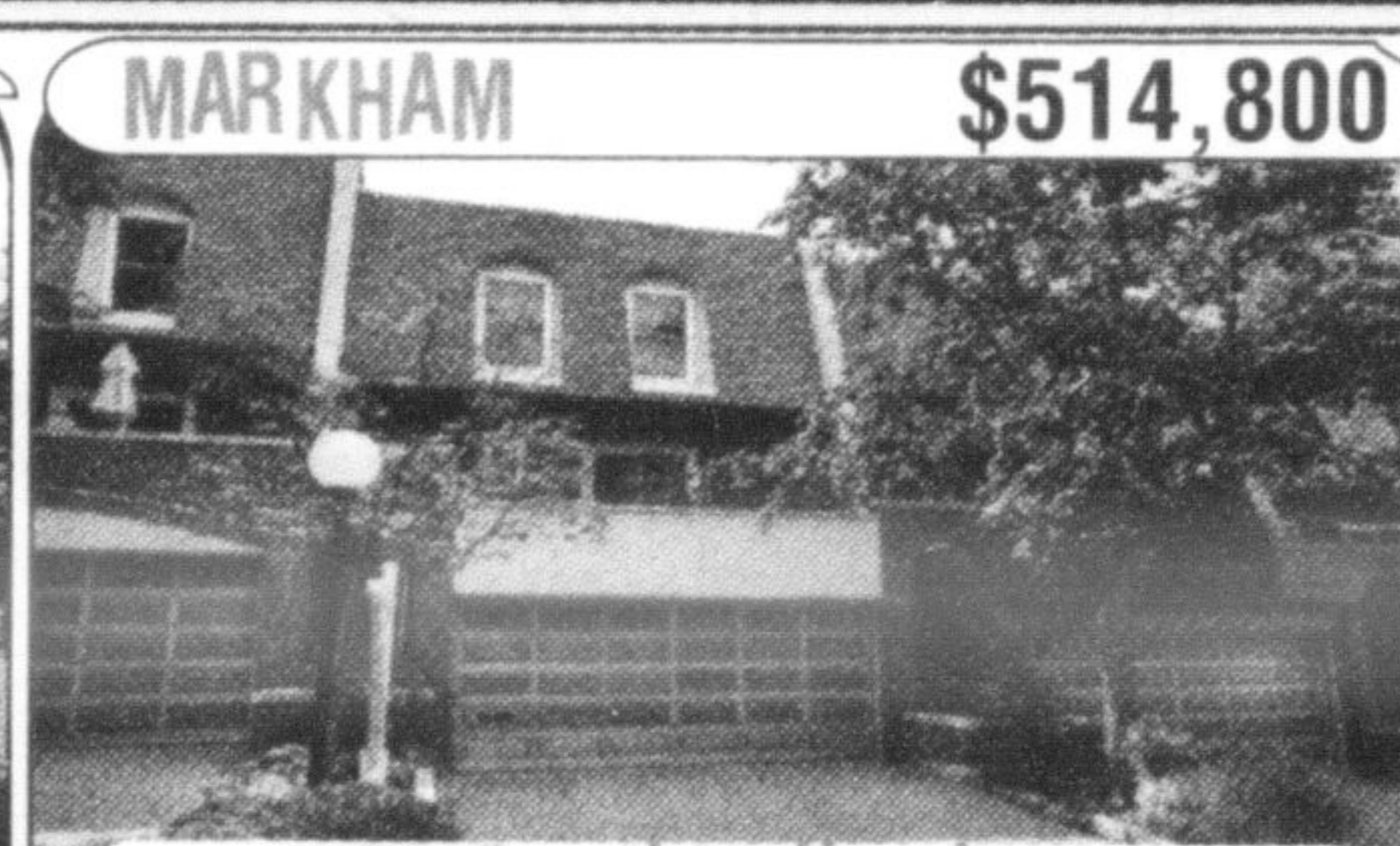
Your COUNTRY REACH HOMES

To advertise in this feature please call Diane ext. 212 at 905-878-2341 or email dianew@miltoncanadianchampion.com

HIRE THE #1 TEAM IN GTA! BEST OF BOTH WORLDS. FOR THE REAL 1% TOTAL COMMISSION. WIN FREE LISTING. JOIN IN CELEBRATING OUR SUCCESS.



MILTON \$729,800
979 Stearn Pl



MARKHAM \$514,800
69 Quail Valley Lane



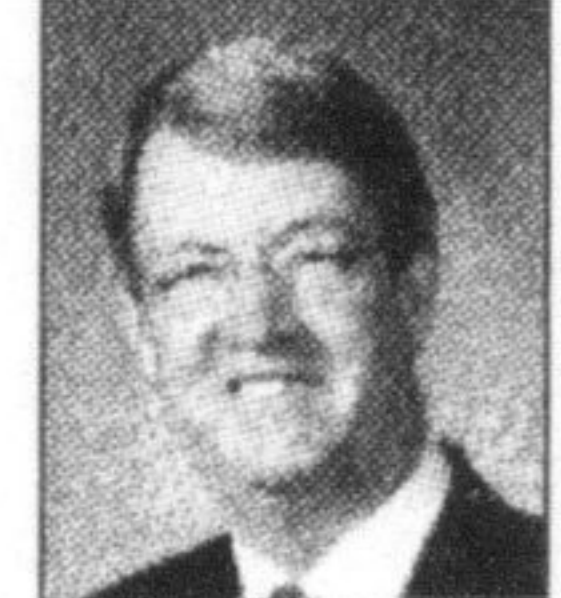
CAMBRIDGE \$479,800
56 Henwood Dr

Mattamy's award winning 'Tothburg' model, 3331 sq ft On a rare 56ft. premium lot w/stone & stucco elev. in Hawthorne Vlg. Over 200k of tasteful upgrades

4 Br executive townhouse complex with a luxurious layout. Well maintained home by Bayview country club & Bercy park. Tranquility, serenity & security.

MAXIMUM SERVICES
★MLS LISTING
★OPEN HOUSES
★STAGING ADVICE
★NEWSPAPER ADS
★DEDICATED SALES REPRESENTATIVE
★VIVID PHOTOGRAPHY
★APPOINTMENT BOOKINGS
★COLOURFUL FEATURE SHEETS & MORE!

264-1111 minmaxx.com
Not intended to Solicit Buyers or Sellers currently under contract with another Brokerage. © 2010 All Rights Reserved MinMaxx Realty Inc., Brokerage. Based on MinMaxx Team's highest number of listings sold Jan 2010 - Jun 2010. *If listed and sold by listing sales representative except Gardiner, Naveed Mazhar, Anita Kumari, Vijay Gandhi) as well as the Broker of Record (Azim Rizvee). All the Statistics and Rankings are based on TREB Data sourced from an independent auditor.



Allan Ails
Sales Rep.

519-833-9911
800-834-5516

RE/MAX REAL ESTATE CENTRE
INC. BROKERAGE



HERE'S YOUR REFUGE FROM THE REST OF THE WORLD \$699,000

With professionally landscaped woods, flagstone walkways, perennial gardens + bird feeders! Avid walkers will enjoy the short jaunt to the charming Village of Erin shopping + entertaining. These 2 acres shelter this 3+1 bedroom, 3.5 bath 1.5 storey abode, providing serenity and peace every day of the year. www.al-liz.com



98 ACRE FARM - ERIN - \$499,000

Located just off paved road, presently leased to farmer. Great views, good building site. Excellent value. Crops belong to leased farmer. www.al-liz.com



BRING YOUR BACKPACK \$649,000

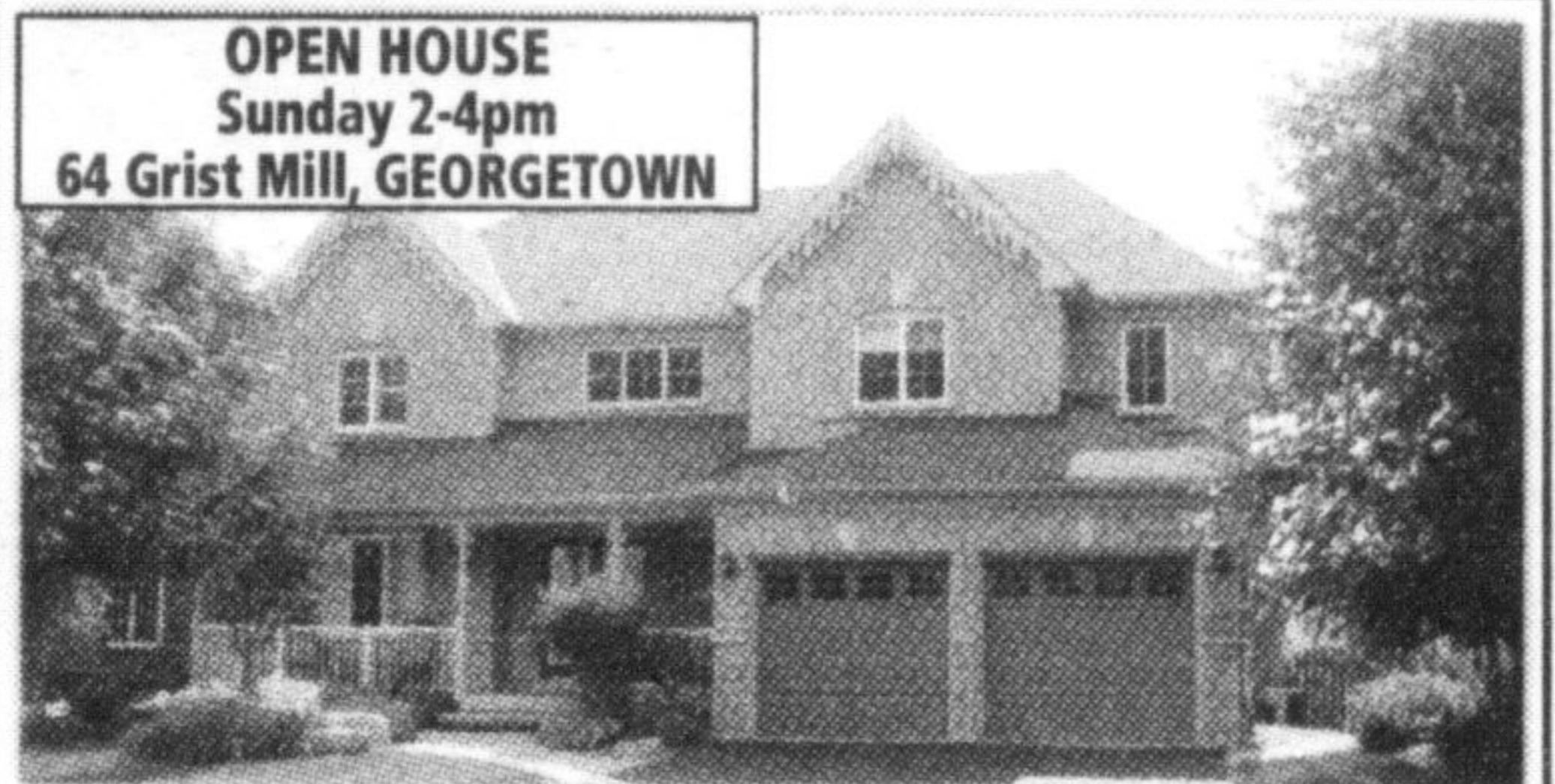
You can hike all day on your own country property! Oh, and the views... of glorious countryside from so many fields and hills! You must walk this property to appreciate how much it has to offer. www.al-liz.com



LINDA SCHOUTEN
Sales Reps
905-878-8101
416-697-3422
lindaschouten@royallepage.ca

ROYAL LEPAGE

Meadowtown Realty, Brokerage
Independently Owned and Operated



You will LOVE this LOT!

Huge yard, desired area, quiet Street. Very open spacious main level. Airy Foyer, hrd.wood in Sep. din and family rm. Cozy up by the gas fireplace! The perfect Den for your special use. Lg.kit.w/eat-in walkout to deck. Plenty of room for the entire family. Who could ask for more? A must see! Virtual Tour: http://myvisualistings.com/vt/38695

\$594,900.

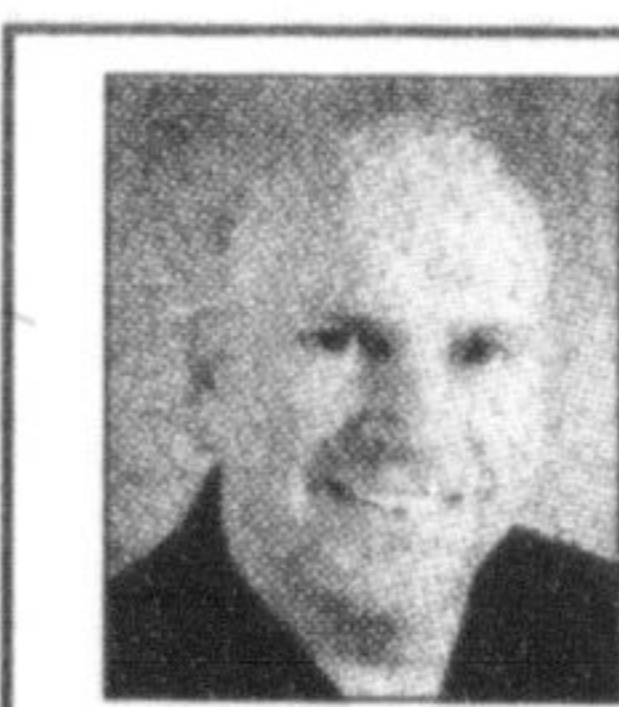


905.634.6873
www.buyanewhome.ca



PHASE II NOW ON SALE!

Sutherland Development Group's Phase II Release features 1 bedroom, 1 bedroom plus den, 2 bedroom and 2 bedroom plus den designs. 12 layouts to choose from! Includes Free Central Air and 3 Appliances. Prices starting at \$914.02 monthly I.P.T.C. Inclusive. 3 models to view. Visit our presentation centre at 1475 Maple Avenue, Milton. Call Fredene Plouffe, Broker of Record, Today for More Information!



Ray Chesher
Broker of Record

905-877-9001

HeyRay.ca

Virtual tours at www.HeyRay.ca



3 for 1 INVESTMENT OPPORTUNITY

Yes, it's true!! Main home has 3+1 bedrooms. Completely separate above grade 2 bedroom apartment PLUS a detached 2 bedroom home - all on this approximately 1.2 acres in the Village of Hillsburgh! Well maintained inside & outside!

\$449,900.00 MLS#X1875848



Andrew Kaye
Sales Representative

905-845-9180

Century 21
Miller Real Estate Ltd
Brokerage



\$419,900 - 859 WATSON TERRACE

Beautiful "Powell" model by Mattamy on quiet crescent. Excellent condition and lovely decor. Second floor laundry. Double drive. Upgraded kitchen cabinets and backsplash. Dark laminate floors. Big rooms. Shows very well.



ANDREA & CHRIS SEVENTIKIDIS
Sales Reps.
905-878-9100

Top 5% in sales for Prudential Canada in 2006 - 2009!

Prudential TRU CENTRAL REALTY, INC. BROKERAGE



\$424,900 www.miltonareahomes.com

"SANDCLIFFE CORNER" MODEL BY MATTAMY IN DESIRABLE HAWTHORNE VILLAGE ON THE ESCARPMENT
Stunning 3 bedroom 2028 sq.ft. home for the professional with very minimal upkeep in the yard. Large patio above dbl garage, a/c, alarm, gas fireplace, lots of windows/natural light, hardwood stairs, master bed w ensuite & jacuzzi tub, upgraded kitchen w centre island, state-of-the-art appls are all included! One street from park, short walk to schools.



LOG HOME

Located on a very pretty 2.2 acres. Open concept Living, main floor Master and stunning bathroom. Upstairs, "loft" family room, 2 large bedrooms & full bath. Finished W/O basement. Paved road - 20 mins to Georgetown or Guelph.
\$469,900.00

MLS#X1927302