

www.miltoncanadianchampion.com • MILTON CHAMPION Thursday, August 26, 2010 • B28

For the latest information, visit us at chevrolet.ca, drop by your local Chevrolet Dealer or call us at 1-800-GM-DRIVE. **\$14,000 Price Adjustment includes \$8,000 manufacturer to dealer delivery credit (tax exclusive) and \$6,291 employee price discount (tax exclusive) available on 2010 MY Silverado/Sierra HD 2500 for retail customers only. Other delivery credits available on most models. Employee price discount amount based on MSRP of \$55,190 (including \$1,350 license, insurance, registration, fees associated with filing at movable property registry/PPSA administration fees, duties and taxes). Dealers are free to set individual prices. Any actual savings under the Employee Pricing program will vary depending on your dealer's prior selling prices. Employee price discount is available on the purchase/finance of an eligible new or demonstrator 2010/2011 MY Chevrolet/Cadillac/GMC/Chevrolet or 2010 MY Pontiac/Hummer vehicle delivered between 6/23/10 and 8/31/10 at participating dealers in Canada. Ineligible vehicles: 2010/2011 MY Corvette ZR1, Medium Duty Trucks and G-Vans (passenger, cargo, cutaway), 2011 MY Equinox, Terrain, Camaro, Regal, LaCrosse, Cadillac CTS Coupe and SRX. Dealer order or trade may be required. Limited quantities of certain 2010 models available. This offer may not be combined with certain other consumer incentives available on GM vehicles. GMCL may modify, extend or terminate this offer in whole or in part at any time without notice. Conditions and limitations apply. See your GM dealer for details. \$4,300/\$500/\$6,000/\$2,000 is a manufacturer to dealer delivery credit for 2010 Chevrolet (Cobalt, LS/Malibu, Silverado 1500/Traverse) reflected in offers in this advertisement. Offer applies to the purchase of 2010 Chevrolet (Cobalt, LS Coupe or Sedan, R7E/Malibu LS R7C), Example: \$10,000 at 0% for 60 months, the monthly payment is \$166.67. Cost of borrowing is \$0. Total obligation is \$10,000. Payment and cost of borrowing will vary depending on amount borrowed and down payment/trade. **7-Freight & PDI (\$1,450/\$1,350/\$1,350/\$1,350), registration, air and tire leas and OMVIC fees are included. Insurance, licence, PPSA, dealer fees and applicable taxes are not included. Offer applies as indicated to the purchase or finance of 2010 new or demonstrator vehicle. Offer is transferable to a family member living within the same household (proof of address required). As part of the transaction, dealer may request documentation and may contact GM to verify eligibility. This offer may not be combined with certain other consumer incentives available on GM vehicles. GM reserves the right to amend or terminate this offer at any time without prior notice.

MSRP of \$55,190 (including \$1,350 license, insurance, registration, fees associated with filing at movable property registry/PPSA administration fees, duties and taxes). Dealers are free to set individual prices. Any actual savings under the Employee Pricing program will vary depending on your dealer's prior selling prices. Employee price discount is available on the purchase/finance of an eligible new or demonstrator 2010/2011 MY Chevrolet/Cadillac/GMC/Chevrolet or 2010 MY Pontiac/Hummer vehicle delivered between 6/23/10 and 8/31/10 at participating dealers in Canada. Ineligible vehicles: 2010/2011 MY Corvette ZR1, Medium Duty Trucks and G-Vans (passenger, cargo, cutaway), 2011 MY Equinox, Terrain, Camaro, Regal, LaCrosse, Cadillac CTS Coupe and SRX. Dealer order or trade may be required. Limited quantities of certain 2010 models available. This offer may not be combined with certain other consumer incentives available on GM vehicles. GMCL may modify, extend or terminate this offer in whole or in part at any time without notice. Conditions and limitations apply. See your GM dealer for details. \$4,300/\$500/\$6,000/\$2,000 is a manufacturer to dealer delivery credit for 2010 Chevrolet (Cobalt, LS/Malibu, Silverado 1500/Traverse) reflected in offers in this advertisement. Offer applies to the purchase of 2010 Chevrolet (Cobalt, LS Coupe or Sedan, R7E/Malibu LS R7C), Example: \$10,000 at 0% for 60 months, the monthly payment is \$166.67. Cost of borrowing is \$0. Total obligation is \$10,000. Payment and cost of borrowing will vary depending on amount borrowed and down payment/trade. **7-Freight & PDI (\$1,450/\$1,350/\$1,350/\$1,350), registration, air and tire leas and OMVIC fees are included. Insurance, licence, PPSA, dealer fees and applicable taxes are not included. Offer applies as indicated to the purchase or finance of 2010 new or demonstrator vehicle. Offer is transferable to a family member living within the same household (proof of address required). As part of the transaction, dealer may request documentation and may contact GM to verify eligibility. This offer may not be combined with certain other consumer incentives available on GM vehicles. GM reserves the right to amend or terminate this offer at any time without prior notice.

**HURRY! FINAL DAYS
OFFER ENDS AUG. 31ST**

**CHEVROLET
EMPLOYEE PRICING
YOU PAY WHAT GM EMPLOYEES PAY**

INCL. UP TO
\$14,000
PRICE ADJUSTMENTS** (SILVERADO HD amount shown)

UP TO \$1,500 IN CHROME ACCESSORIES ON US**

**PLUS
GM OWNERS ASK ABOUT
\$1,500
LOYALTY BONUS****

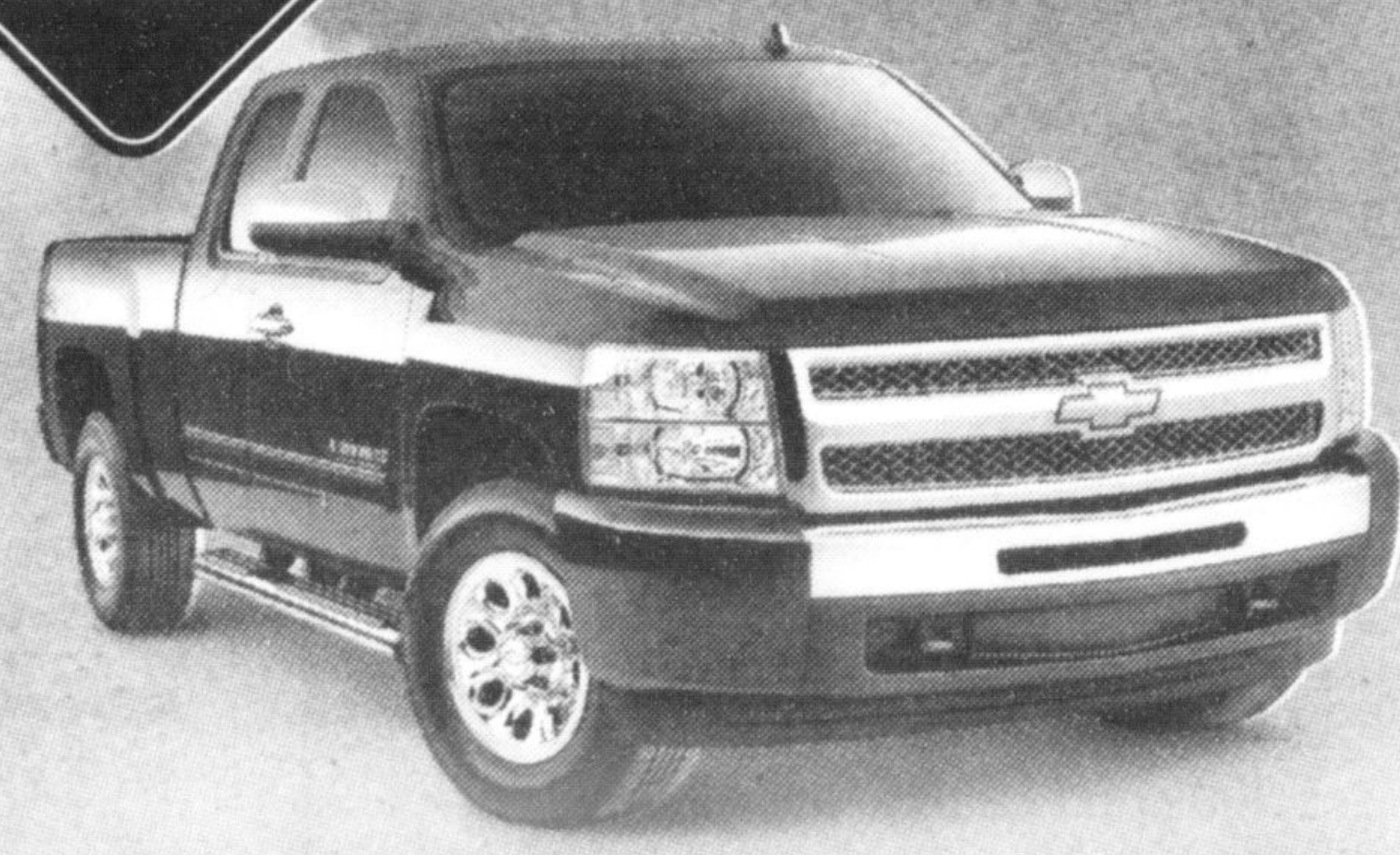
CHROME EQUIPPED SILVERADO TRUCKS IN STOCK NOW. WHEN THEY'RE GONE, THEY'RE GONE.

**2010 CHEVROLET SILVERADO
CHEYENNE EDITION EXT. CAB 4WD**

MSRP \$38,454
**EMPLOYEE PRICING
\$28,231***
INCLUDES FREIGHT, PDI, FEES & \$6,000 CASH CREDIT*

★★★★★
HIGHEST POSSIBLE U.S. GOVERNMENT
CRASH SAFETY RATING*

**\$2,000 GM CARD MAX.
REDEMPTION
ALLOWANCE***



LT model with Team Canada Edition Package shown**

2010 CHEVROLET MALIBU LS

MSRP \$25,489
**EMPLOYEE PRICING
\$23,214***
INCLUDES FREIGHT, PDI, FEES & \$500 CASH CREDIT*

★★★★★
HIGHEST POSSIBLE U.S. GOVERNMENT
CRASH SAFETY RATING*

**\$1,500 GM CARD MAX.
REDEMPTION
ALLOWANCE***

**2010 CHEVROLET COBALT LS
AIR & AUTOMATIC**

MSRP \$19,794
**EMPLOYEE PRICING
\$14,349***
INCLUDES FREIGHT, PDI, FEES & \$4,300 CASH CREDIT*

**PLUS
0% FOR 60
MONTHS
PURCHASE FINANCING***

**\$1,500 GM CARD MAX.
REDEMPTION
ALLOWANCE***



LTZ model shown**

2010 CHEVROLET EQUINOX LS

MSRP \$27,489
**EMPLOYEE PRICING
\$25,306***
INCLUDES FREIGHT, PDI & FEES

★★★★★
HIGHEST POSSIBLE U.S. GOVERNMENT
CRASH SAFETY RATING*

**\$1,500 GM CARD MAX.
REDEMPTION
ALLOWANCE***

2010 CHEVROLET TRAVERSE LS

MSRP \$37,194
**EMPLOYEE PRICING
\$31,839***
INCLUDES FREIGHT, PDI, FEES & \$2,000 CASH CREDIT*

★★★★★
HIGHEST POSSIBLE U.S. GOVERNMENT
CRASH SAFETY RATING*

**\$2,000 GM CARD MAX.
REDEMPTION
ALLOWANCE***



RECYCLE YOUR 1995 OR OLDER VEHICLE AND RECEIVE
UP TO \$3300**
IN ADDITIONAL CASH INCENTIVES.

**OR ASK ABOUT
CASH FOR CLUNKERS**
IN COLLABORATION WITH RETIRE YOUR RIDE. FUNDED BY THE GOVERNMENT OF CANADA.

Retire Your Ride
Canada's Vehicle Recycling Program

Summer IMPACT



GM THE BEST COVERAGE IN CANADA
5 YEARS
160,000 KM*

ROADSIDE ASSISTANCE
COURTESY TRANSPORTATION

visit: ontariochevroletdealers.com
VEHICLE PRICING IS NOW EASIER TO UNDERSTAND BECAUSE ALL OUR PRICES INCLUDE FREIGHT, PDI AND MANDATORY GOVERNMENT LEVIES.
Prices do not include applicable taxes and PPSA. Consumers may be required to pay up to \$599 for Dealer fees.***

