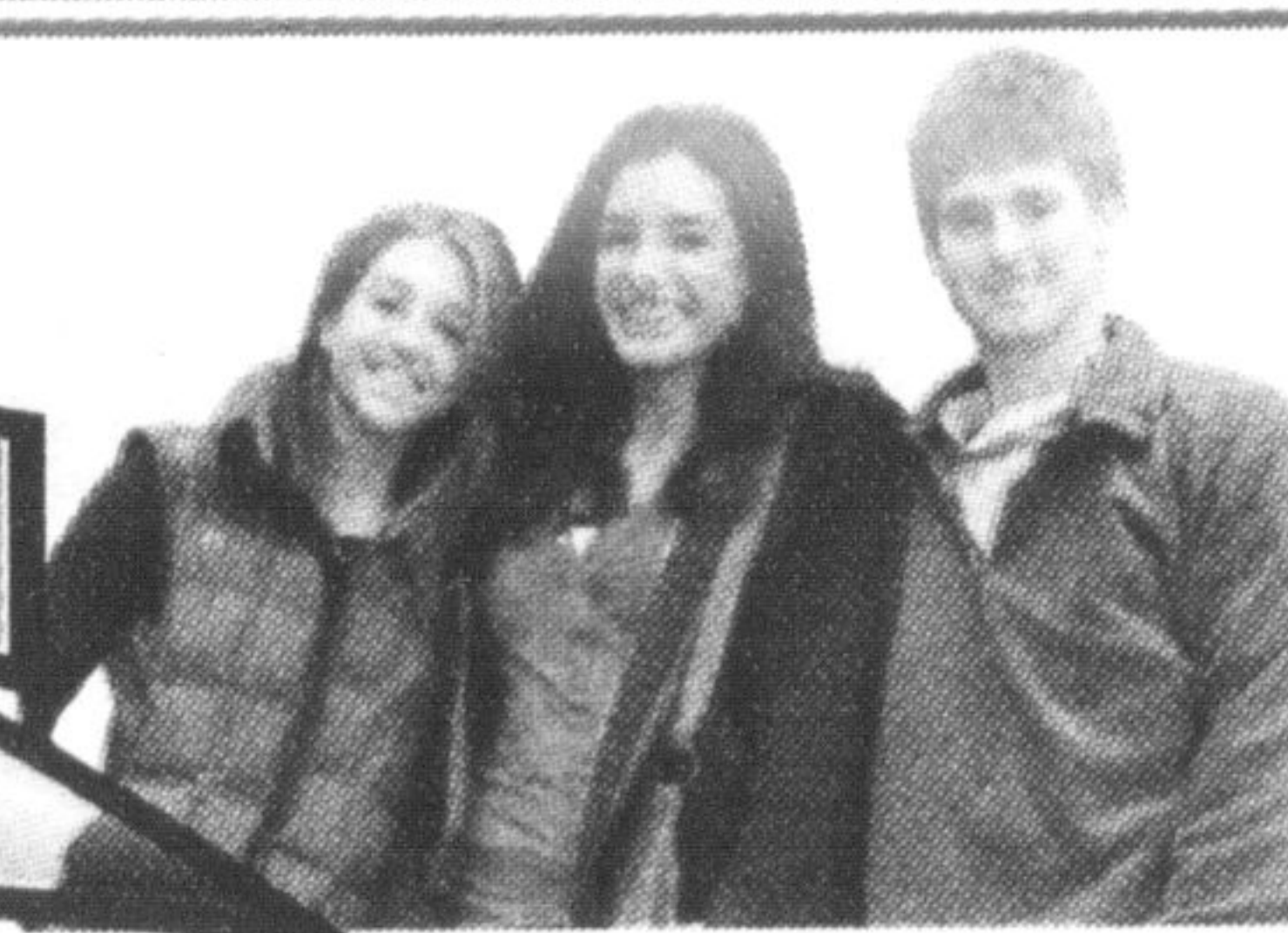


GORRUD'S AUTO
 410 STEELES AVE., MILTON
 1-888-854-0369

BACK to SCHOOL INVENTORY SALE



Now Only \$7,988
 PLUS HST & LICENSING.

2007 Chevrolet Aveo LT
 Was \$8,988
 Reduced \$1,000



4 cyl. 1.6L. auto, black ext., black int., 4 dr. hatchback, power moonroof, aluminum rims, power windows & locks, A/C, 96,470 km. Stk#709537

Only \$6,988
 PLUS HST & LICENSING.

2005 Chrysler Sebring 4 Door Sedan



V6 2.7L. auto, red ext., black int., Certified & emission tested, 86,320 km. very low mileage for the year! Stk#649173

Only \$7,388
 PLUS HST & LICENSING.

2006 Pontiac G5 4 Door Sedan



2.2L 4 cyl., auto, silver ext., grey int., certified & emission tested, A/C, 95,528 km. Stk#726873

Only \$6,988
 PLUS HST & LICENSING.

2004 Saturn ION 4 3 Door Coupe



4 cyl. 2.2L. auto, silver ext., black int., one owner vehicle, certified & emission tested, aluminum rims, A/C, p. windows & locks, 98,143 km. Stk#226710

Now Only \$6,988
 PLUS HST & LICENSING.

2007 Toyota Yaris
 Was \$7,888
 Reduced \$900



2 dr. hatchback, 4 cyl. 1.5L. manual, black ext., black int., certified & emission tested, very, very low mileage for the year, economical 5 spd., 49,576 km. Stk#066875

Now Only \$7,988
 PLUS HST & LICENSING.

2007 Toyota Corolla
 Was \$8,988
 Reduced \$1,000



4 dr. sedan, 4 cyl. 1.8L. manual, grey int., grey ext., certified & emission tested, economical 5 speed, A/C, keyless entry, p. locks, 94,127 km. Stk#713783

Only \$8,988
 PLUS HST & LICENSING.

2007 Pontiac G5 4 Door Sedan



2.2L. auto, blue ext., grey int., certified & emission tested, p. windows & locks, 67,844 km. Stk#174621

Now Only \$5,988
 PLUS HST & LICENSING.

2006 Toyota Yaris
 Was \$6,988
 Reduced \$1,000



2 dr. hatchback, 4 cyl. 1.5L. manual, blue ext., black int., certified & emission tested, economical 5 spd., 93,849 km. Stk#019647

Only \$7,988
 PLUS HST & LICENSING.

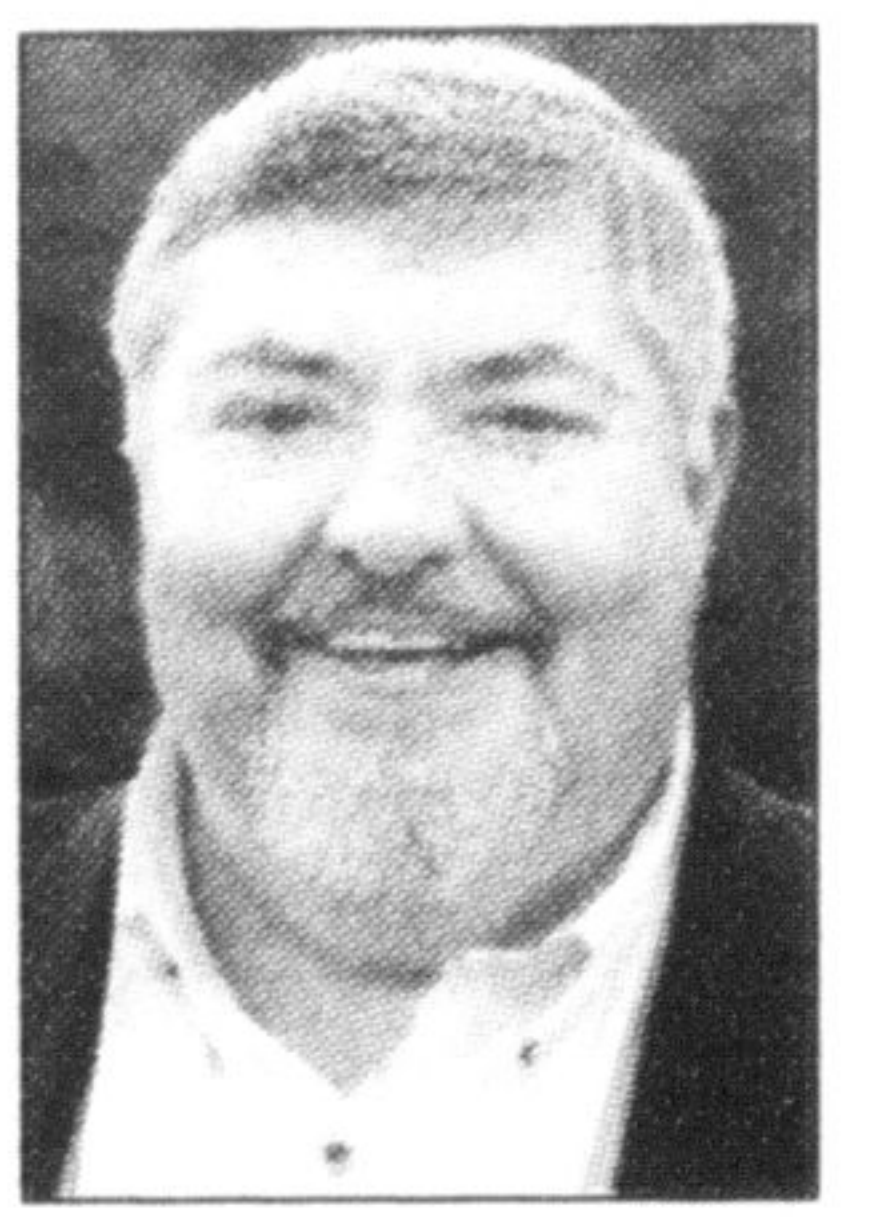
2007 Chevrolet Aveo LT
 Was \$8,988
 Reduced \$1,000



4 dr. hatchback, 4 cyl. 1.6L. auto, black ext., black int., certified & emission tested, p. moonroof, aluminum rims, p. windows & locks, A/C, 96,470 km. Stk#709537

Penman to seek regional council seat

Councillor Brian Penman has a busy schedule planned for the next four years if he's successful in his election bid. The long-time Ward 1 representative announced Monday he'll be running for a regional (Wards 1,6,7,8) spot on council.



"There will be a significant loss to this council, as many as five people will not be returning after Oct. 25. I have a lot of experience and a lot of years at this level and I've cultivated relations not only with local staff, but with the region, province and feds. So it was the perfect time to consider the regional seat."

If elected, he says his list of priorities is a lengthy one. The hospital expansion, the Wilfrid Laurier University campus and the completion of the Derry Green Corporate Business Park are three issues Penman says will change the face of Milton.

"I have a vision for this university. Bringing Wilfrid Laurier to town is just one of the biggest accomplishments (for Milton). It changes the complexion, it changes the appeal to move and live (in Milton), it changes business and it changes who will move and relocate."

Penman, who has been on Town Council for 33 years, said the business park will fulfill the vision he has for Milton - where residents live, work and play.

"I just don't want warehouses, I just don't want logistics, I just don't want big boxes that send product

• see WILL on page A10

OVER 300 VEHICLES AVAILABLE! **\$0 DOWN!**
DON'T PAY 'TIL 2011!!! (OAC)

GORRUDS.COM 1-888-854-0369



Inside Today's Champion

OPINION	A6
CLASSIFIED	A25
DATELINE	B8
REAL ESTATE	B23

www.miltoncanadianchampion.com

Inserts:
 • FULL DISTRIBUTION •
 • PARTIAL DISTRIBUTION •
 • FOOD BASICS • BED BATH & BEYOND • BEST BUY • 2001 AUDIO • FRESHCO • HUSKY ENERGY PREFERRED
 • ZELLERS • M&M MEATS • SALVATION ARMY • HAKIM OPTICAL • NO FRILLS • FORTINOS
 • REAL ESTATE SECTION • HOME HARDWARE • FRIDAY SHOPPING NEWS • SPORTS CHECK
 • ASHLEY FURNITURE • RONA CASHWAY • PRICE CHOPPERS • DELL COMPUTERS • SOBEYS
 • GIANT TIGER • ACTION SOBEYS • METRO • THE BRICK • RECALL • LITTLE CAESARS
 • CURRY'S ART STORE • LOWES • MEDICAL FOOT • HOME DEPOT • BUSINESS DEPOT • PAYLESS SHOES
 • BASS PRO SHOP • THE SOURCE • HOME DEPOT • HOME OUTFITTERS • MICHAELS • SHOPPERS DRUG MART
 • WALMART • FUTURE SHOP • SUPERSTORES • ROGERS WIRELESS • SEARS • CANADIAN TIRE