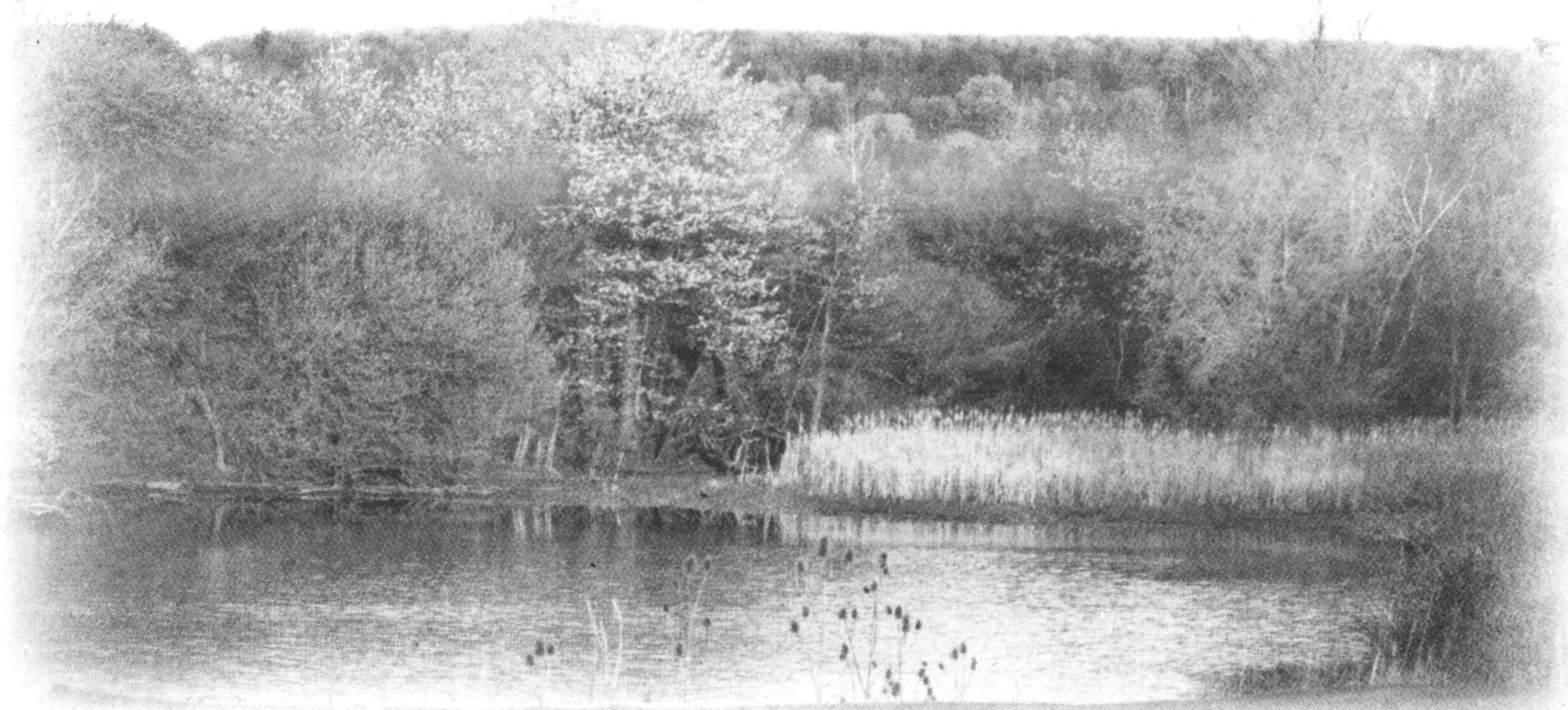




mattamyhomes.com

# On August 28th, We're Unveiling The Best Of Hawthorne Village.



Hawthorne Village Vista Pond

The wonderful thing about Hawthorne Village is how it always continues to grow new neighbourhoods without ever feeling crowded. And soon we will offer 2 additions to the community. Hawthorne Village is the largest WideLot™ community in Canada, home to more than 10,000 families. Over the past decade it has evolved into a community with incredible choice in home styles and a host of major features shared by all who live there.

On August 28th, your family will experience new opportunities to live in this amazing collection of neighbourhoods.

## *August 28th, 2 New Additions In The Village.*



Hawthorne Village on the Park is a brand new neighbourhood centred around a lush park space, offering Village homes and WideLot™ Townhomes as well as SPIRIT 30', 34', 36' and 43' detached homes.



Hawthorne Village Vista is set to open 36', 43' and 50' detached homes in this well-established, picturesque community. New opportunities to live at the foot of the escarpment are just around the corner.

*To Pre-Register Please Visit [www.mattamyhomes.com](http://www.mattamyhomes.com)*



BILD 2009 Home Builder Of The Year.

All illustrations are artist's concept. All dimensions are approximate. Prices, specifications, terms and conditions subject to change without notice. E&OE.