

The Canadian Champion
Weekend Spotlight on

HOMES



GLADYS CRANFORD
 Broker
 Office: 905-878-7777
 gcranford@sympatico.ca



TREVOR CRANFORD
 Sales Representative
 Office: 905-878-7777
 Direct: 905-899-4303
 trevor.cranford@hotmail.com

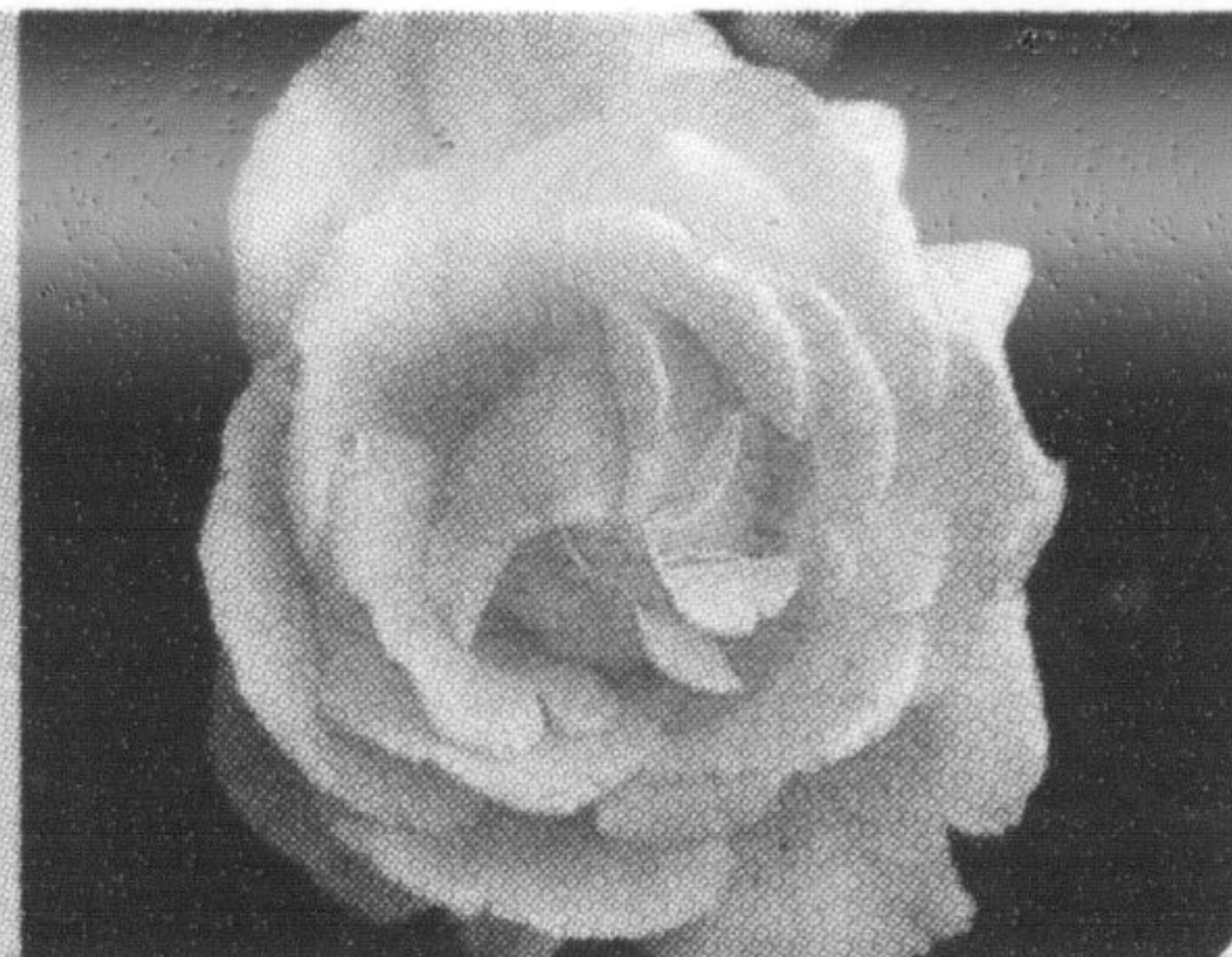


OPEN HOUSE
 SUNDAY, JULY 25, 2-4PM
 1204 FOX CRESCENT



OVERLOOKING THE FOREST

Large family home with elegant pillars and open concept design, 4 bedrooms with ensuite and supersize walk-in closet off master, upper level laundry, upstairs balcony overlooking foyer, main level family room with fireplace, large upper deck off kitchen and concrete covered patio with walkout basement. Quiet street close to schools, parks, shopping and 401. **Asking \$549,500.**



OPEN HOUSE
REDUCED
OPEN HOUSE
REDUCED
SATURDAY 1-4PM

Murray Taylor
 Broker
 519-824-9050

ROYAL LEPAGE

Royal City Realty



176 Fitzgerald Crescent - \$559,900

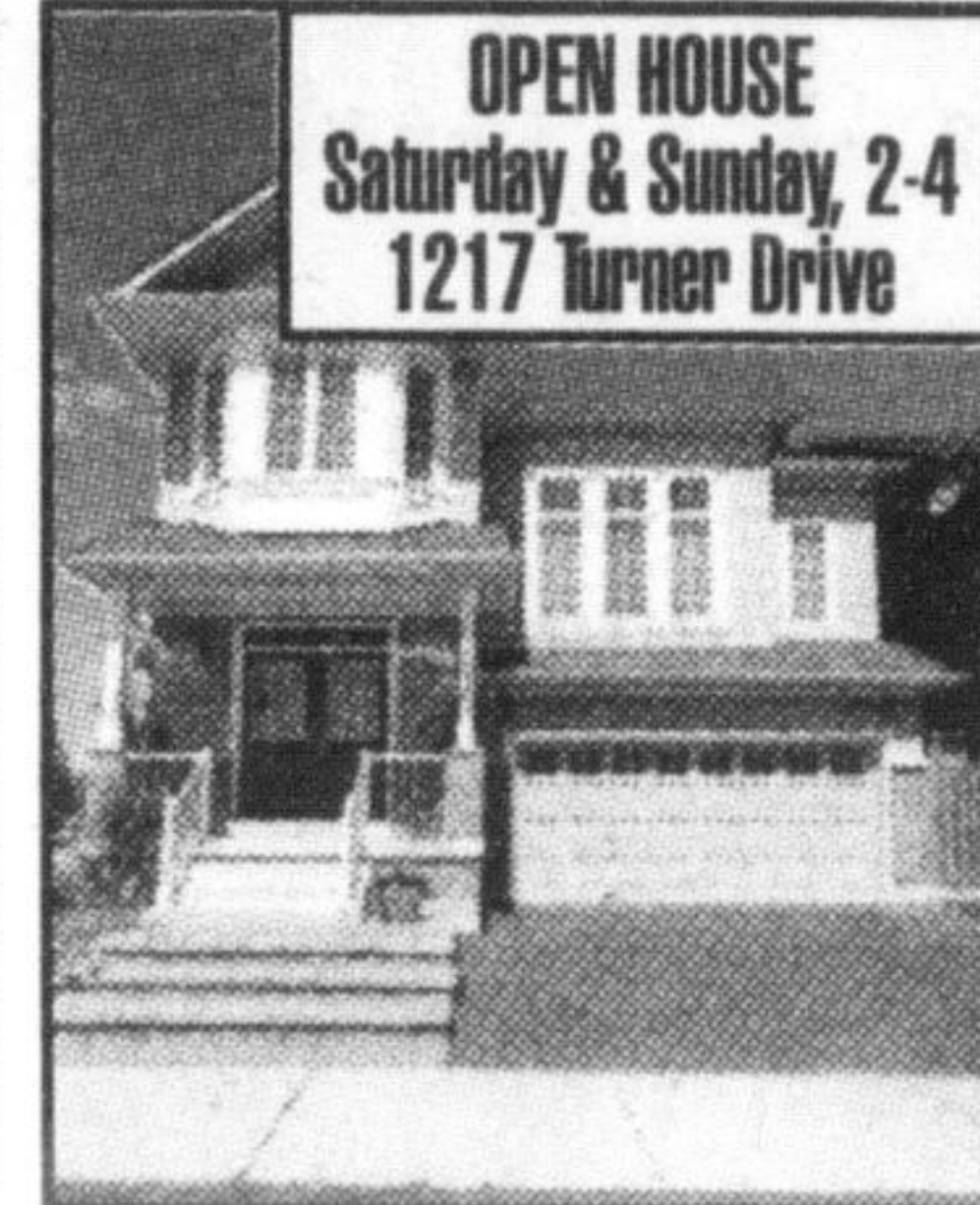
Unbeatable Value! Beautifully appointed 3,000 sq. ft. home just minutes from the GO station, Hwy. 401, shopping, parks, and Milton's two top-ranked elementary schools: St. Peter C.S. and Chris Hadfield P.S. Numerous upgrades throughout include 9 foot ceilings on the main floor, hardwood in all principal rooms, tallboy cupboards and marble backsplash in the kitchen, and a fabulous, fully legal and permitted 2 bedroom apartment with extra large windows and a separate entrance down. Enjoy the comfort of high efficiency a/c, four huge bedrooms, and a fabulous open concept layout all in a wonderful family neighbourhood.

Visit us this Saturday between 1pm and 4pm.



JOHN PROTACIO

(905) 858-3434
 (647) 309-7653



OPEN HOUSE
 Saturday & Sunday, 2-4
 1217 Turner Drive

MAIN STREET VILLAGE

Absolutely stunning home located in Main Street Village. Perfect for that growing family. Dazzling home situated steps from child safe park!! Separate formal dining room, second floor family room with soaring vaulted ceilings. Plenty of big bright windows in all rooms. Professionally finished basement with separate entrance! Beautifully landscaped yard. Walk out to deck. Walking distance to schools and shopping. Located close to Hwy 401/407 &

Go Station. Call John to view this home 647-309-SOLD (7653), checkout virtual tour, www.johnprotacio.com.

You say SELL. John says SOLD!!!



Lia & Bill McNally
 Sales Reps.

905-877-5165
 www.willsell.ca



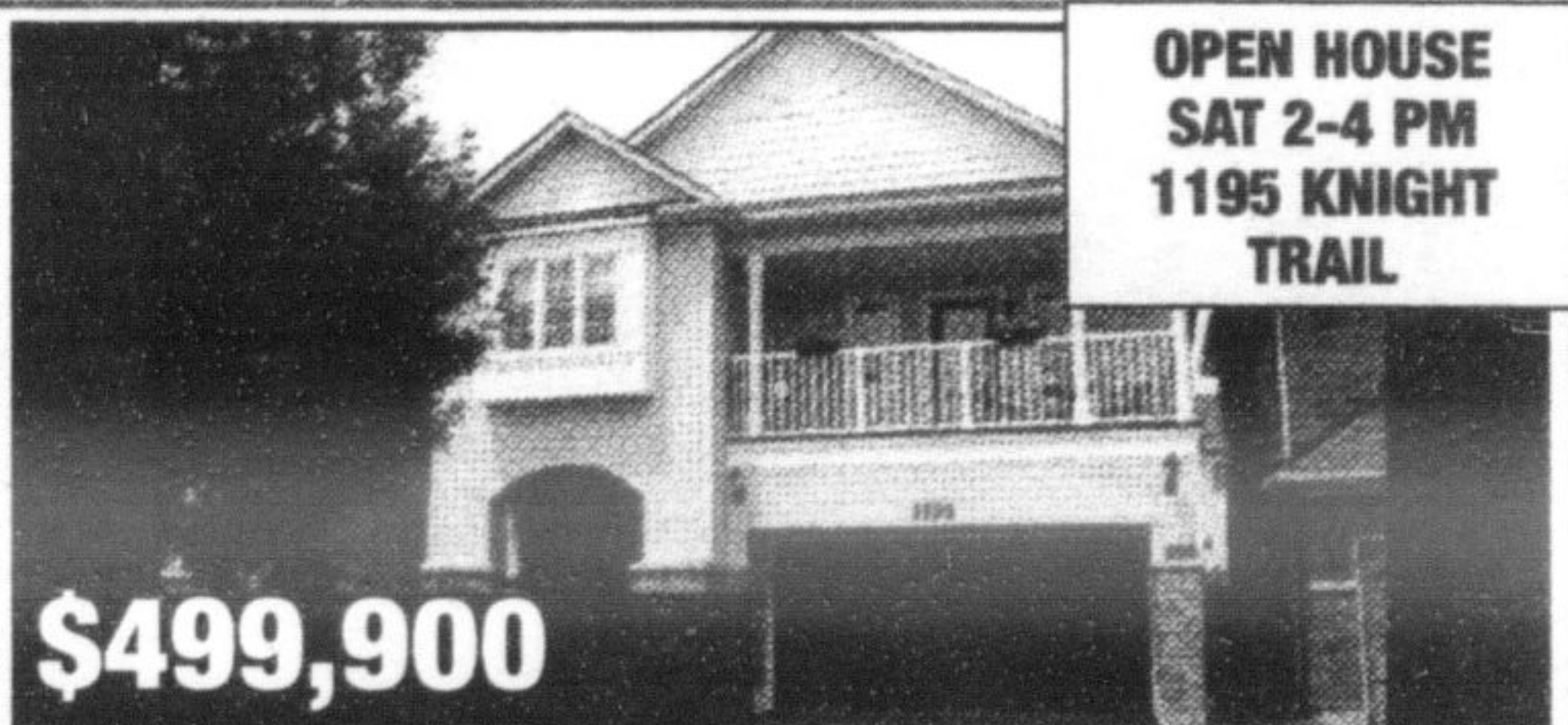
OPEN HOUSE
 SATURDAY
 2-4 P.M.
 942
 AMBROISE,
 MILTON

GREAT STARTER HOME OR FOR THOSE DOWNSIZING! Mattamy built "Ashfield" model. 1052 sq. ft. Premium lot overlooking greenspace, not other homes! • No condo fees! • Covered front porch • Upgraded oak staircase! • Kit. has upgraded cupboards & breakfast bar • 2 bdms thoughtfully located on 3rd flr, away from principal rms • Mstr has walk-in closet • 1 car garage w/inside access! • All appliances included! • Virtual tour at www.willsell.ca



LESLIE HANSON
 Sales Rep.

905-828-6550
 www.lesliehansonhomes.com



OPEN HOUSE
 SAT 2-4 PM
 1195 KNIGHT TRAIL

\$499,900

JUST LISTED!

Immaculate and upgraded over the past 2 years including; satin finish hardwood, upgraded light fixtures & custom blinds, extensive decking and interlocking for low-maintenance outdoor living, 5 new appliances, surround sound. Stunning designer décor done with incredible flair. Will not last!

FEATURE HOMES



HEATHER MEEHAN · RYAN HAYDAR · CAMMY HAYDAR
 Sales Representatives

www.themeehanteam.com

905-878-7777

info@themeehanteam.com



HEATHER MEEHAN · RYAN HAYDAR · CAMMY HAYDAR
 Sales Representatives

www.themeehanteam.com

905-878-7777

info@themeehanteam.com



NEW LISTING



5130 STEELES AVE., MILTON

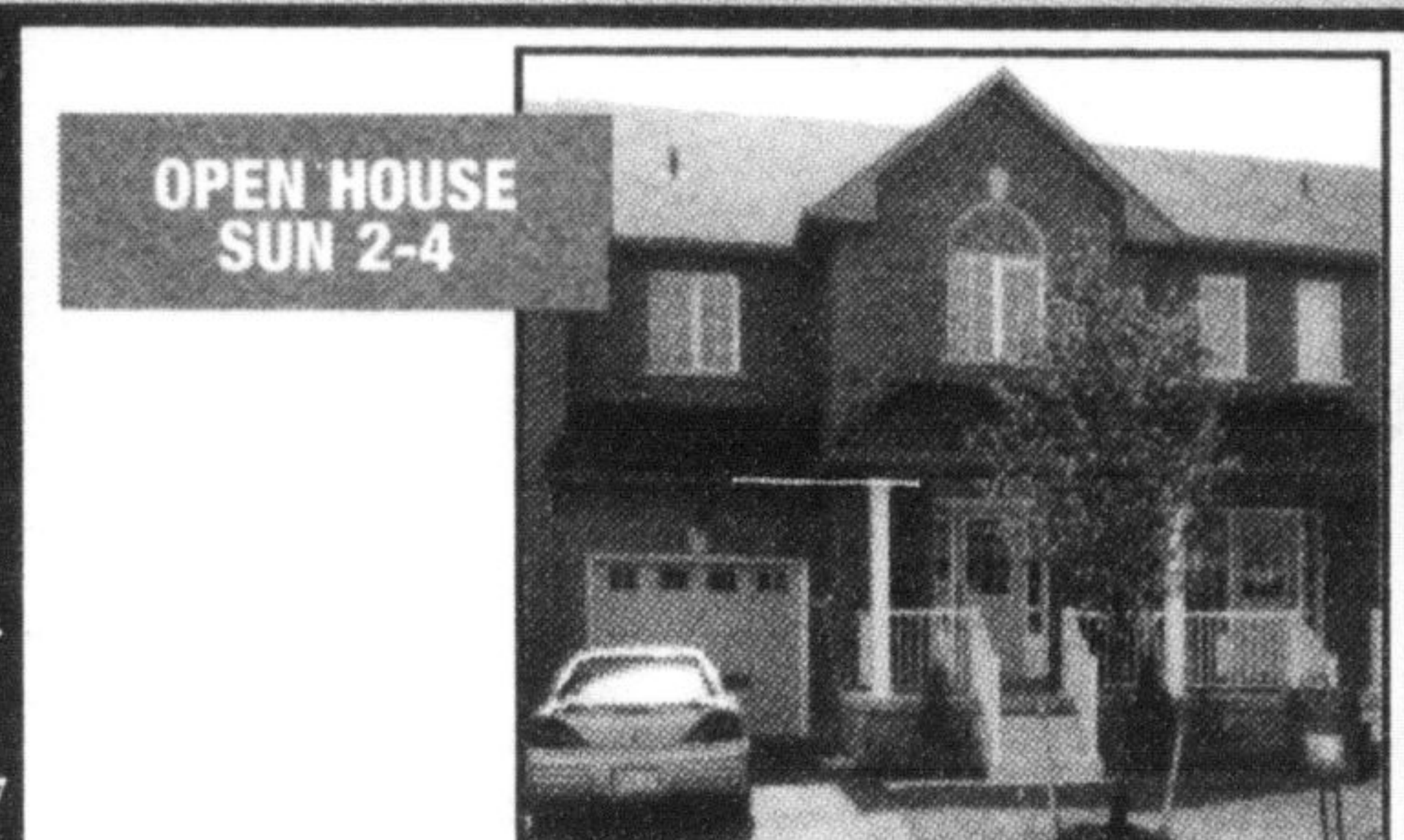
\$689,000 Milton "TOP OF THE ESCARPMENT" 5 bdrm family home on 3.5 acres w/woods, tennis court, I/G pool, extensive interlocking & oversized garage. Open concept Kit, DR & LR. Main fl laundry & FR. 3 FP's. 2 min to Milton's amenities. Walk to Bruce Trail & Conservation. **MLS#2019920**



Jodie Totoda
 Sales Representative

Paul Gauthier
 Broker

Dir: 905-510-4867
 Off: 905-208-2175



OPEN HOUSE
 SUN 2-4

350 BUSSEL CRESCENT MLS#2019747

\$339,900 Stunning Open concept 3 bedroom T.H. Premium lot backing onto park. Eat in kit. & s.s. apl. Upgraded ceramics, pot lights & freshly painted. Lrg. Master bdrm. with ensuite & walk in closet. Prof. Fin. Bsmnt. Shows to perfection! A must see!

NEW LISTING



820 MAPLE AVE., MILTON

\$449,000 Desirable Dorset Park location! Spacious 4 level back-split on premium corner lot which allows for a 2nd driveway room enough for 8+ cars. FR w/FP & walkout to pie shaped pool sized rear yd. Finished Rec Room & storage in LL. Very private w/mature landscaping & trees. **MLS#2019784**



Rina DiRiso
 Sales Representative
 www.rina.ca
 rina@rina.ca

Dir: 905-849-3346
 Off: 905-338-3737



SCOTT

\$669,900 - BACKING ONTO RAVINE & GREENSPACE! Outstanding Mattamy built brand new home on quiet high demand court w/view of escarpment. Fabulous kitchen w/ granite. Open concept great room. Hrdwd flrs in formal dng rm, mn flr den & 2nd lvl. 9' mn flr ceilings, dark stained curved oak staircase, travertine flooring in foyer thru to kitchen. Amazing lookout bsmt. Loaded w/upgrades!



Amy Flowers
 Broker

Michelle Merritt*
Neil Maxwell*
 Sales Representatives

Did you know?...

- Interest rates are at historical lows
- Property values are leveling
- Sellers are highly motivated
- Costs of owning a home are down
- This market offers some incredible deals
- Real estate is considered the most solid investment you can make!

There has never been a better time to buy!

... the only way to beat the rush of buyers that find the best deals is to get your **FREE** custom hot-sheet of listings:

- Includes bank foreclosures, estate sales and other distress sales
- Updates sent to you daily
- Custom to your price range, location, size of home and style of home
- Gain the same access to new listings that Realtors have!

Don't be the last one to know about the best buys!

Call Amy Today at 905-878-6232!

ROYAL LEPAGE Meadowtowne Realty, Brokerage
 Independently Owned and Operated

905-878-8101

Direct Line

905-878-6232
 www.AmyFlowers.ca

To advertise in this feature please call **DIANE** ext. 212 at 905-878-2341 or email dianew@miltoncanadianchampion.com