



The Canadian Champion
**Weekend
 Spotlight
 on**

HOMES

The Canadian
Champion
 Milton's Community Newspaper Since 1860

To advertise in this feature please call Diane ext. 212 at 905-878-2341 or email dianew@miltoncanadianchampion.com

Golden rules for stress-free summer entertaining:

- Stick to staple dishes that are simple and easy to make.
- Create a welcome cocktail: Chill sparkling wine and serve it spiked with a dash of Cointreau, for a refreshing, citrus-flavoured twist.
- Pick up flowers or fill a glass vase with some fresh fruit to add a pop of colour to the table.
- Lavender scented candles set the mood and act as a sweet smelling, all-natural bug repellent – perfect for outdoor entertaining.



Debbie Pearce
 Sales Representative

Sotheby's Canada

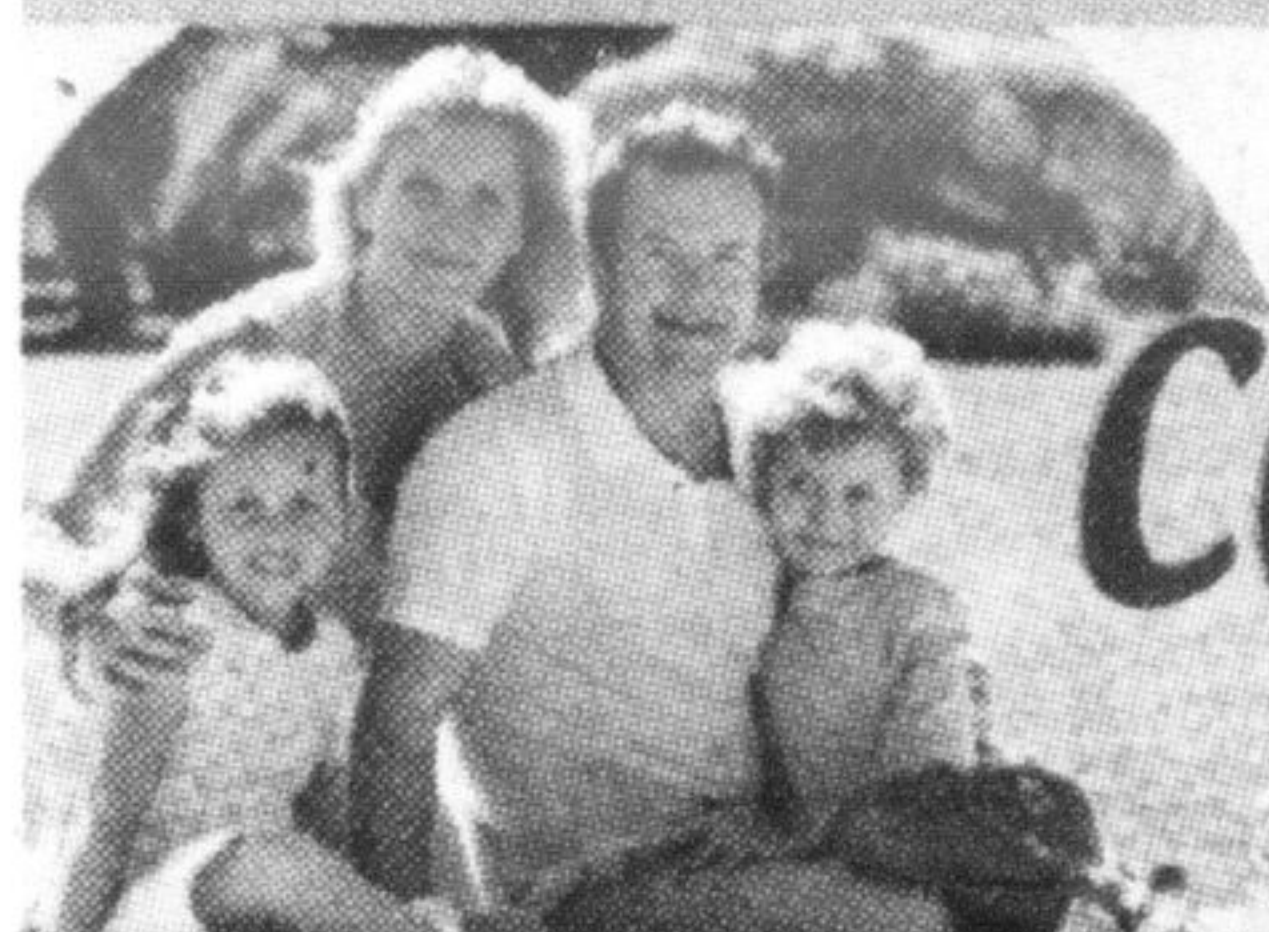
International Realty

Canada, Brokerage
 905-845-8908



MILTON EXECUTIVE ESTATE - 33 ACRES ~ \$1,997,000

Just minutes north of Milton, south of Acton, custom gated home features highest quality finishes, approx. 5300 SF + fully finished lower level. 4 Bedrooms, 4.1 baths. Privately located on 33 acres of beautiful open fields, woods, trails. Amazing design, custom maple kitchen, media room, main floor master suite w/steam room, wine cellar, main floor office/den. Separate outbuilding w/workshop, garage. Has equestrian option if needed.



Your
**COUNTRY
 REACH**

HOMES

DELIVERED TO
**51,500 HOMES
 PER WEEK**

To advertise in this feature please call DIANE ext. 212 at 905-878-2341 or email dianew@miltoncanadianchampion.com

HIRE THE #1 TEAM IN GTA! FOR THE REAL #1% WIN FREE LISTING. BEST OF BOTH WORLDS. TOTAL COMMISSION. JOIN IN CELEBRATING OUR SUCCESS.



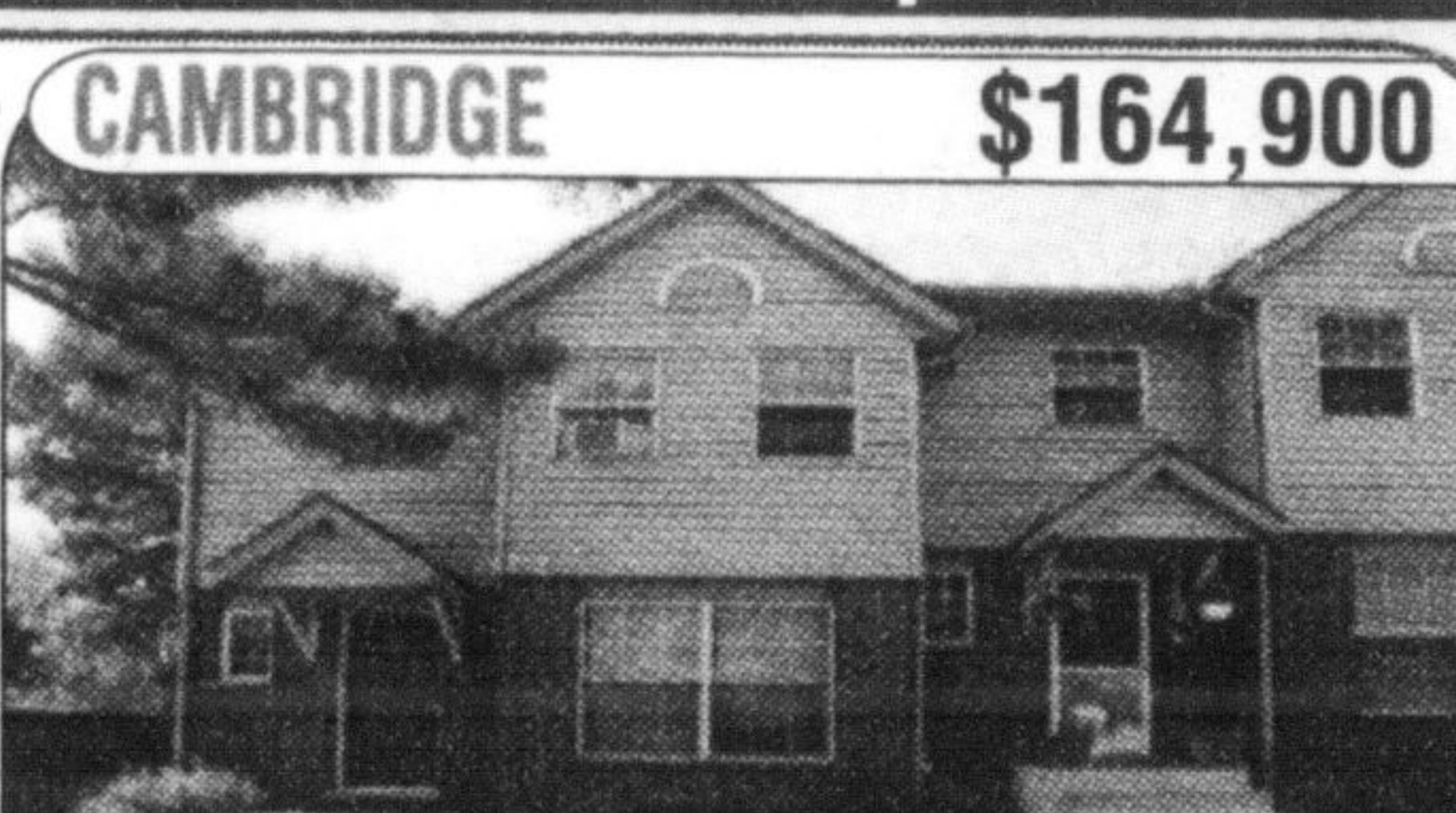
MILTON \$949,900
 9549 Guelph Line

14 acres of beauty just north of Campbellville. Home was built 1987 & surrounded by million dollar views. Quality workmanship throughout.



ERIN \$629,800
 5036 First Line

3 bdrm bungalow, sits on 9.9 acres of lush partly treed property. Private getaway, w/a pond, private driveway, 2 sep decks, & plenty of room to play.

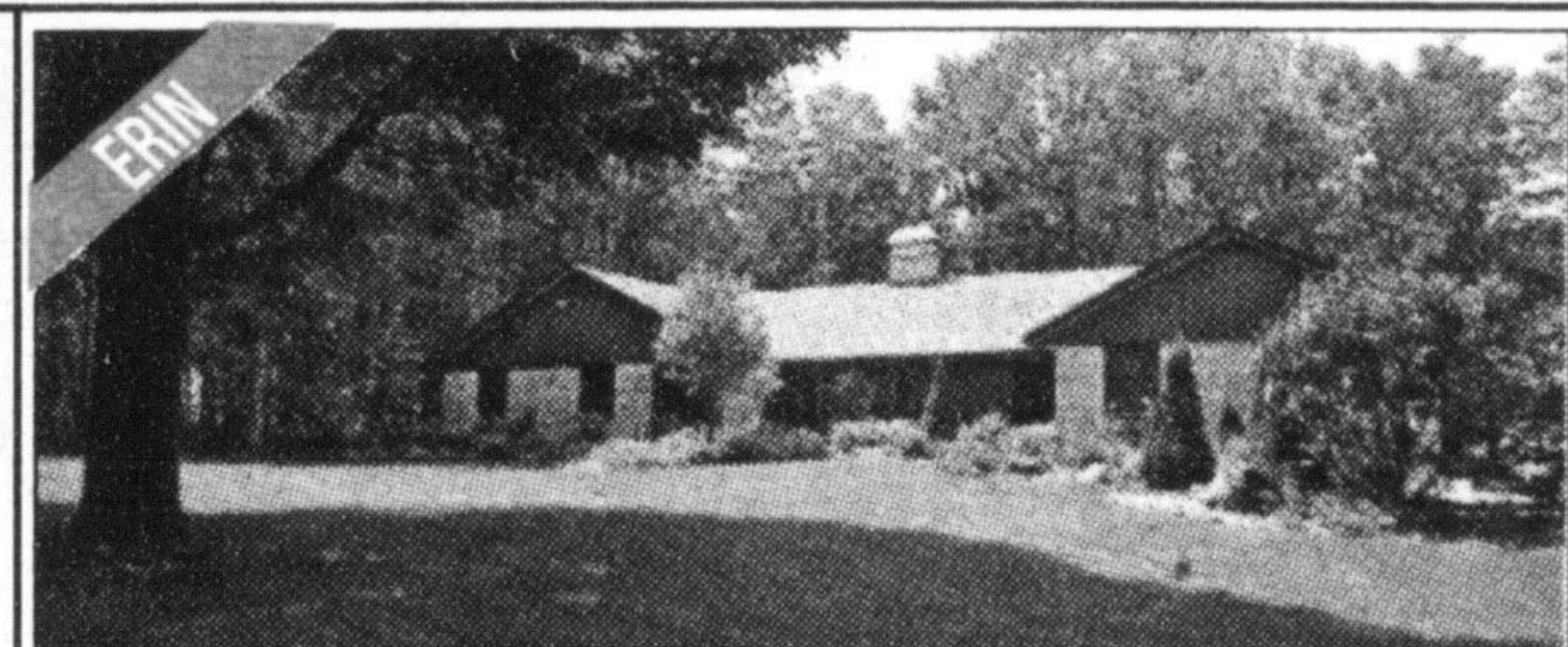


CAMBRIDGE \$164,900
 26 Poplar Dr

MAXIMUM SERVICES: MLS LISTING, OPEN HOUSES, STAGING ADVICE, NEWSPAPER ADS, DEDICATED SALES REPRESENTATIVE, VIVID PHOTOGRAPHY, APPOINTMENT BOOKINGS, COLOURFUL FEATURE SHEETS & MORE!

Not intended to Solicit Buyers or Sellers currently under contract with another Brokerage. © 2010 All Rights Reserved MinMaxx Realty Inc., Brokerage. Based on MinMaxx Team's highest number of listings sold Jan 2009 - Dec 2009. *If listed and sold by listing sales representative the Broker of Record. All the Statistics and Rankings are based on TREB Data sourced from an independent auditor.

Allan Ails
 Sales Rep.
 519-833-9911
 800-834-5516
 REAL ESTATE CENTRE

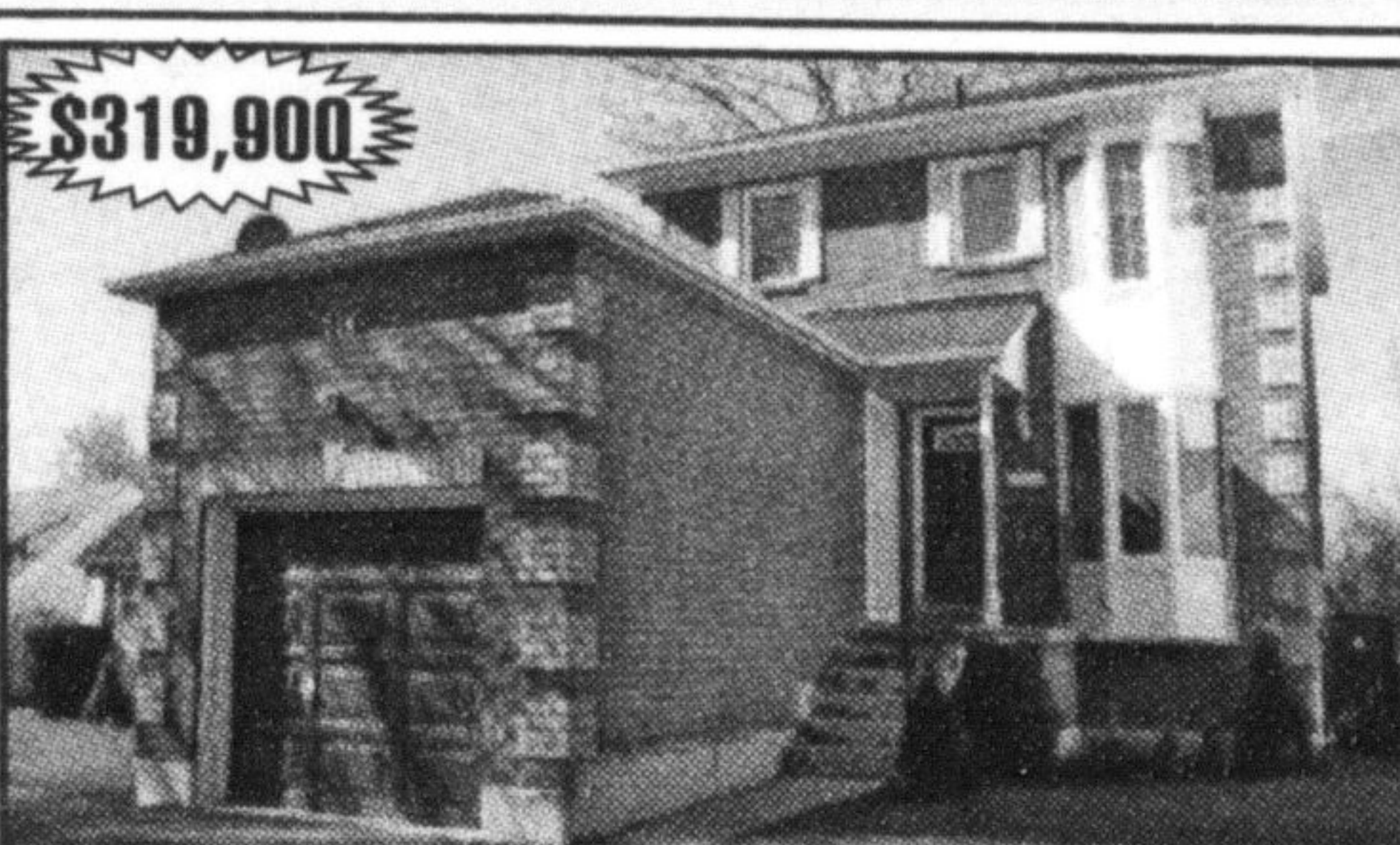


ERIN
WHAT MORE COULD YOU WANT \$899,000
 When you've got everything right here?! Gorgeous country estate on 5 acres. \$\$ spent on upgrades! 4 beds, 2.5 bath, solarium open to kitchen, family room, sunroom, main floor laundry, finished bsmt with rec + games rooms, large detached heated workshop with garage door opener + remote, wood shed, garden shed, huge pond, trees, professionally landscaped perennial gardens and the exquisite country setting you've been dreaming of! www.al-liz.com



ERIN
HERE'S YOUR REFUGE FROM THE REST OF THE WORLD \$729,000
 With professionally landscaped woods, flagstone walkways, perennial gardens + bird feeders! Avid walkers will enjoy the short jaunt to the charming Village of Erin shopping + entertaining. These 2 acres shelter this 3+1 bedroom, 3.5 bath 1.5 storey abode, providing serenity and peace every day of the year. www.al-liz.com

Christina Matesic
 Sales Reps.
 905-877-8262
 direct 905-875-8262
 REAL ESTATE CENTRE



\$319,900
Ravine Lot!!
 This 3 bedroom home backs onto forest. Homes boasts neutral decor, laminate flooring throughout, separate dining room, finished basement with high ceilings. Also has a forest view from the front of home!! Very quiet section of the street. Don't miss out on this deal!!!
 Contact CHRISTINA MATESIC, 905-875-8262 direct.

LINDA SCHOUTEN
 Sales Reps
 905-878-8101
 416-697-3422
 lindaschouten@royallepage.ca
 ROYAL LEPAGE

WHO NEEDS A RAVINE???
NEW PRICE
OPEN HOUSE Sunday, 2-4pm 64 Grist Mill GEORGETOWN
WE HAVE A PREMIUM LOT (60 X 163) Entertainer's Delight! Your Child's Dream home in sought after Stewart's Mill. This Beverly model features lg. kit w/brk. bar, bright eat-in w/ walk-out from fr.dr.s, open to fam.rm. Sep. din/div rm, soothing family rm w/ gas fireplace. Mstr.bdrm with Spc. ensuite, Calif. shutters, 200 amp, high eff.furnance, 2 gas h.kups. Seeing is Believing! MLS 2018651
<http://www.mvvisualistings.com/vt/38695>
\$639,900

Liz Crighton
 Sales Rep.
 519-833-9911
 800-834-5516
 REAL ESTATE CENTRE

HILLSBURGH
3+1 BDRM COUNTRY RAISED BUNGALOW \$364,500
 Just outside the village of Hillsburgh. Totally beautiful open and bright. And you will love all the extras. Large 2-tier deck from entrance, large family room in finished basement w/walkout to garage. Fully fenced backyard great for kids and pets. Large renovated & heated workshop 36'x25' (9'x10' door).

ERIN
HOT ENOUGH FOR YOU? COME DANGLE YOUR TOES IN THE POOL! \$685,000
 2.3 acres natural and forested, within 4 minutes of the village. Truly a wonderful location. Beautifully landscaped inground pool, hot tub in gazebo, total privacy in a quiet mature country neighbourhood. No need for a cottage!