

ROYAL LEPAGE

Meadowtowne Realty, Brokerage  
Independently Owned and Operated

# ROYAL LEPAGE MEADOWTOWNE REALTY

905-878-8101  
475 MAIN ST. E., MILTON  
www.meadowtowne.com



7RE • CANADIAN CHAMPION Tuesday, June 8, 2010

Sedgwick ~ Marshall ~ Harnden



Together  
we serve you  
better!

ROYAL LEPAGE  
Meadowtowne Realty, Brokerage  
Independently Owned and Operated  
www.royallepage.ca

## Feature Property

**Don't Fence Me In!**  
Build your dream home on this fantastic 101 acre parcel of land. Rolling hills, breathtaking views and located close to Georgetown, Milton and Hwy 401. Have it all!

For more information call Mirella 905-878-8101

Priced at \$797,500

www.royallepage.ca/mirellamarshall

## Backyard Oasis!!!

If you see yourself poolside this summer, don't miss this one... on a pie shaped lot with over \$100k spent on pool, hot tub, cedar cabana and landscaping this rare Mattamy (over 2600 sqft) Sunderland model is for you! 4 bedroom, 3 1/2 baths, upstairs laundry room, fully finished basement, and french doors leading to your backyard oasis awaits you. Don't miss out on this one! It won't last! Call Mandy for more info and to schedule an appointment to view. \$575,900



Serving all your real estate needs...

Residential ~ Heritage ~ Country ~ Commercial

Office  
905.878.8101

Toll Free  
1.800.514.3316

Chris Lightfoot

Sales Representative  
Direct

905-876-7979  
905-878-8101

www.chrislightfoot.ca

ROYAL LEPAGE  
Meadowtowne Realty, Brokerage  
Independently Owned and Operated  
Proud Sponsor of the  
MILTON MARLIN  
SWIM TEAM

SALES AWARD 2009  
GOLD AWARD 2008  
SALES AWARD 2008

## Hot Off the Press!

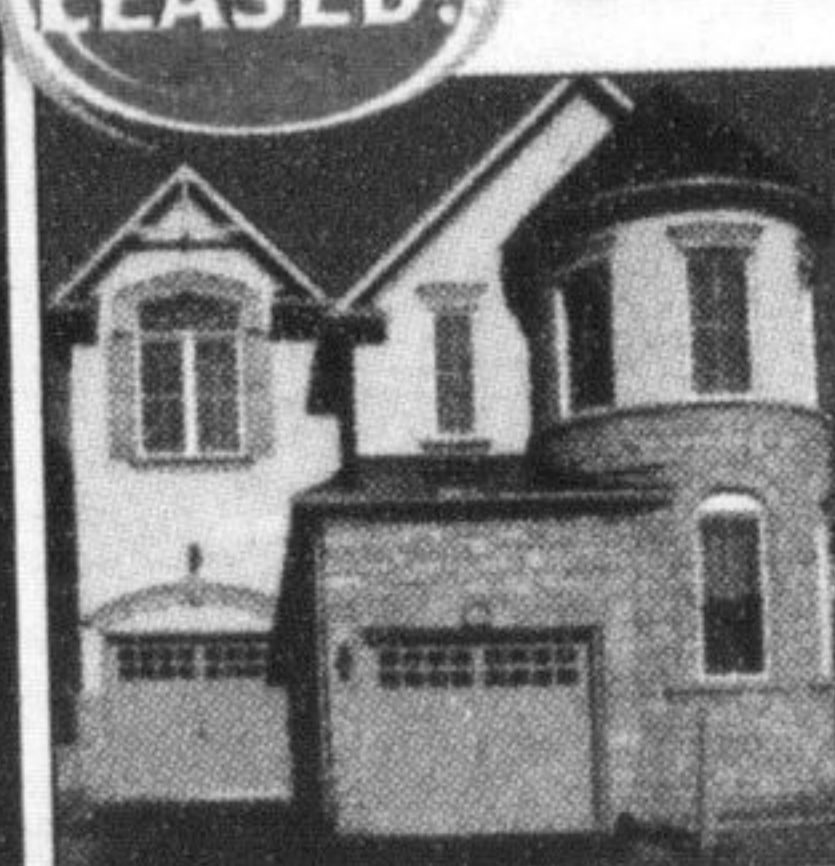
This beautiful 4-bedroom Mattamy 'Quincy' corner model is sure to please. Feat. oak hardwood floors, potlights, 9-foot ceilings, big backyard, and more! Located within highly-desired Hawthorne Village school boundary and close to all amenities. Quick closing available!! Don't miss this one!!

## 6 Acre Escarpment Lot!

NOW AVAILABLE - \$599,000

- perfect for building your custom home!!  
Call me today for more details. 905-876-7979

## LEASED! Great Spring Rental!



Beautiful Mattamy 'Wood Lily' executive-level corner lot available for lease! Over 2700 square feet of living, featuring large gourmet kitchen with granite counters and extra cabinets, brand-new appliances, separate den, spacious bedrooms. Central air/vac included! Call me today for your personal showing, and see more at www.chrislightfoot.ca! \$2,200/month

Call Chris today to see listings or visit me at  
www.chrislightfoot.ca.

REAL ESTATE WITH REAL RESULTS.

INGRID HOLLINGER

SALES REP.

905-878-8101

Call me for a FREE MARKET  
valuation of your home

ROYAL LEPAGE  
Meadowtowne Realty, Brokerage  
Independently Owned and Operated



OPEN HOUSE SUN. 2-4PM  
10761 Guelph Line



I'M STONED (by a mason in 1862). Set on a 1/2 acre. Ideal Country Inn & Bed & Breakfast. Cool in Summer and Cozy in the Winter. Like all Stone Homes I have Wide Plank Floors & Wide Window Sills. Perennial Gardens & Stately Trees. I'm not Ordinary, I'm Original.

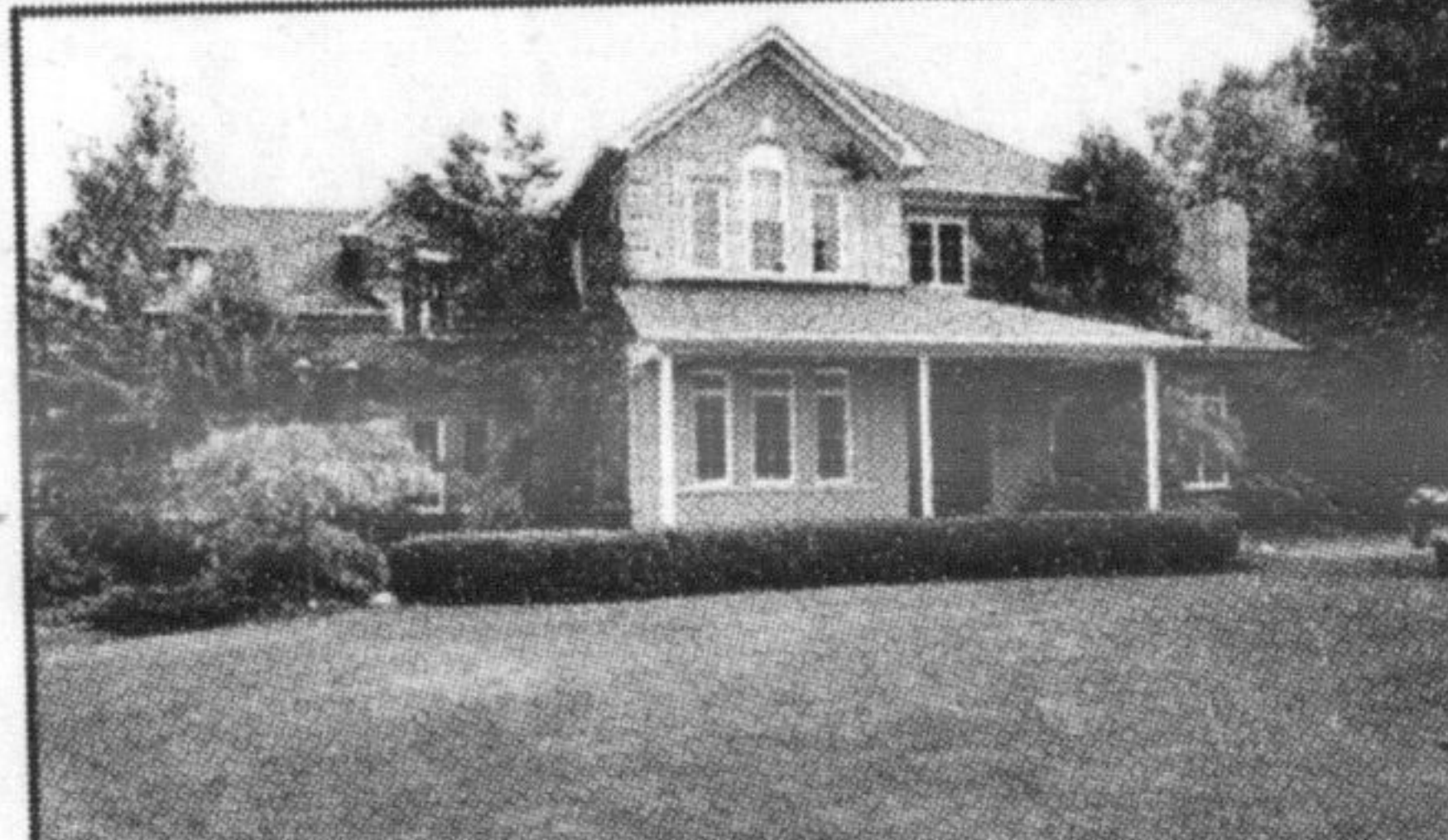
Open House by Ingrid Hollinger On Sunday 2-4 June 13th or call 416-822-5558 for your private showing. \$429,000.

Make Your Dream A Reality



Barb Lafleche

Sales Representative  
905-878-8101



THE PRICE WILL MOVE YOU!  
NOW \$690,000

Here is your golden opportunity to own a spacious home on acreage AND well located in an area of estate homes surrounding the Blue Springs golf course. 4 br, 3 baths, MF fam. rm. and upstairs loft-perfect for an extra guest room, home office or gym. Great deck off kitchen w/o, sep. LR, DR., and Fr opens to Kit. 10 ft ceilings in W/O lower level awaits your touch. Your money couldn't buy more!

COMING SOON! 1750 SF 3 BEDROOM SEMI ON  
A LARGE FENCED YARD IN MAIN STREET VILLAGE.



**CHARMING BUNGALOW** on sought after street in College Park. Original hardwood floors throughout, crown mouldings in living, dining room and California shutters. The kitchen awaits your own special touches. Fully finished basement has huge rec. room, work shop, 5pc bath and sep. entrance from the back yard. 2 decks, a newer front deck or enjoy the back yard privacy and gardens from the back deck. Newer central air conditioning. Close to Glen Abbey Golf Course, Sheridan College, Shopping and there is easy access to HWY's, transit and to train. This is one you won't want to miss. \$419,000.

**SPOTLESS HUGE 2 BEDROOM MAIN FLOOR CONDO**  
Absolutely spotless huge 2 bedroom main floor condo with enclosed balcony giving you a sun filled year round solarium. This home features new wood laminate flooring in the living, dining, master bedroom and second bedroom. Double french doors lead from the living room to the solarium. This unit has great storage space inside the unit as well as a separate locker. Condo fee includes heat, hydro, water, cable, swimming pool, gym, sauna, games room, walk shop and parking underground. \$125,000.

Call  
**Tim Gerrior**  
sales representative  
Direct: 905-691-1662  
Office: 905-878-8101  
Email: tim@timgerrior.com

ROYAL LEPAGE  
Meadowtowne Realty, Brokerage  
Independently Owned and Operated



IRYNA & NICK  
CHRONOPOULOS

We can assist you in English, Ukrainian,  
Greek, Russian or Polish

416-500-7901

Broker

Sales Representative

Our Knowledge Is Your Edge



**Industrial Unit on Bronte**  
2000 sq. ft. unit with mezzanine that adds approx. 800sq. ft. and office area. Two washrooms, floor drains, parking front and rear. Some equipment available. For details call Nick 905-699-0750.

Looking for business opportunity.  
Exclusively listed for sale industrial unit currently set and operated as automotive garage. Zoning allows automotive use. Call Nick if interested to learn more details.

INDUSTRIAL UNIT FOR SALE, 2000 SQ FT IN MILTON

Let Our Experience Guide You

Whether you are looking to sell or buy a home, call us for guidance!

Adina Vaisa, Angela Lupus  
Sales Representatives  
905-878-8101

adinavaisa@royallepage.ca

angelalupus@royallepage.ca



**NEW BACKYARD FOR ENTERTAINING WITH ABOVE GROUND POOL**

TOO NEW FOR PHOTO!

4 level backsplit, 3+1 bedrooms, walkout lower level. On a quiet crescent, walking distance to schools and all amenities. Call us to view and visit our photo gallery at www.myvisualhomes.com/adinanonis

**NEW A HOME THAT MEMORIES ARE MADE OF!**

1137 LITTLE CRESCENT. Exquisite all brick Beaverhall built 4 bedroom home. Situated on a child friendly quiet street. Steps to schools, parks, transit/go station. Features covered front porch to sit on a lazy day, a balcony on the second level and a private fenced in backyard with large deck. Dark hardwood flooring throughout. A kitchen that everyone will envy with butler serving area and breakfast nook. This home has far too many upgrades to mention. Call me to view and visit my virtual tour at www.myvisualhomes.com/adinanonis. \$579,000

**A LITTLE MANSION OF YOUR OWN**

1067 MCCUAIG DRIVE. Lovely all brick double car garage with 4 large bedrooms. Steps to schools, parks, transit. Features a front covered porch to rock on a lazy day and an all fenced in private backyard. This home has all you will need for luxury and comfort! Great floor plan, beautiful decor, large eat in kitchen with breakfast nook and up graded kitchen cabinetry, upper level laundry room. Call us to view and visit our virtual tour at www.myvisualhomes.com/adinanonis. \$463,500

**A HOME OF DISTINCTION!**

1086 GORHAM. Situated on a quiet child friendly street. Steps from Schools, parks and transit. All brick with extensive landscape and a yard for entertaining "100 Deep" Too many upgrades to mention. Main floor laundry, hardwood flooring, a kitchen fit for a chef, separate entrance to basement and much more visit our virtual tour at www.myvisualhomes.com/adinanonis \$539,000

IF YOU WANT MARKET STATISTICS FOR YOUR NEIGHBOURHOOD, PLEASE CALL US OR EMAIL US FOR A FREE REPORT.

\* SALES REPRESENTATIVE \*\* BROKER

Kim Coulter\*

Sales Representative

905-691-1148  
Direct Line

GOLD AWARD 2009  
GOLD AWARD 2008  
DIRECTOR'S PLATINUM AWARD 2006  
MARKET SALES AWARD 2005

## New Listing



**MOFFAT EXECUTIVE HOME ON 2+ ACRES**  
In quiet cul de sac of Tuscan Ridge, minutes from 401 access. 4 bedrooms, 4 washrooms, 9' ceilings, lovely Great Room w/fireplace & views of sweeping vistas. Separate formal dining room. Gourmet kitchen w/walk-out to deck. Large master with W/I closet & ensuite. Professionally finished basement. Great

Call Kim Coulter at 905-691-1148 value at \$699,900!

\$699,900



Doug Howden\*\*

Broker

878-8101

doughowden@royallepage.ca

PRESIDENT'S GOLD AWARD  
LIFETIME AWARD OF EXCELLENCE



COMING SOON!

This 2 storey 3 bedroom home is on a quiet crescent in Bronte Meadows. Steel roof in 2004 and furnace and A/C in 2005. Very private back yard. The main floor has parquet hardwood and patio door access to the backyard. This home has lots of potential as it is ready for your upgrades. \$309,900