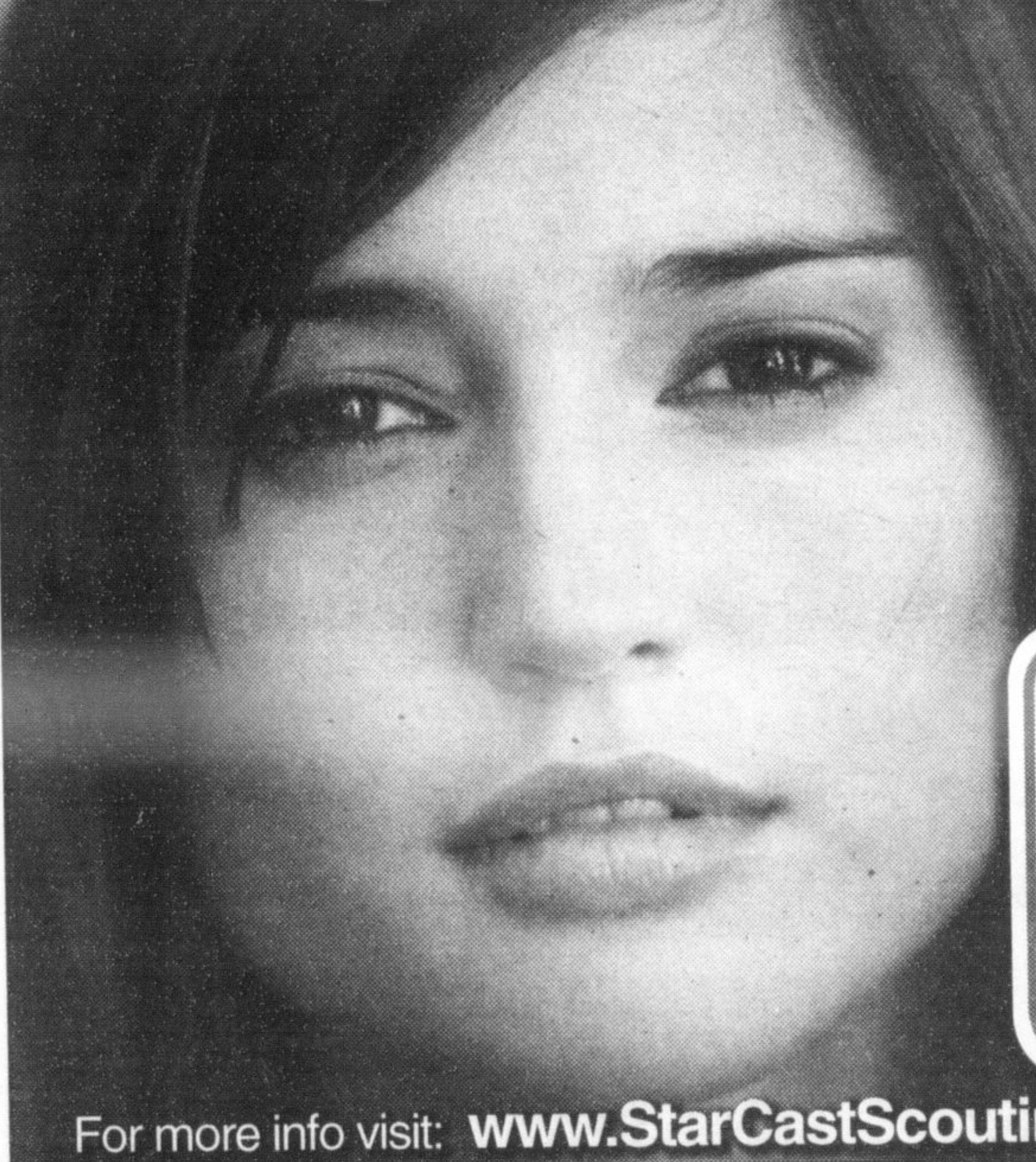


Dateline

Dateline is a free listing for local charitable and non-profit community groups to help promote their coming events. We guarantee one issue of publicity for each event although more insertions are possible if space permits.

Dateline notices should be emailed to editorial@miltoncanadianchampion.com. The final deadline is noon Friday for Tuesday's edition and noon Tuesday for Thursday's edition. Dateline items won't be accepted by telephone.

Recognize me? You will soon!



StarCast
Scouting Services

helped me to get started in the industry and I'm now being promoted for work in commercials, television, print and much more.

Whatever your **age, size, shape** or **ethnicity**, we could be looking **for YOU!**

Our next search event:

MILTON • Thursday, May 27th
Best Western Milton Inn
161 Chisholm Drive

Attend anytime between 5 pm - 8 pm
Registration fee \$39 plus GST. Refunded if you do not qualify. Minimum 4 years of age.
Growing demand for adults and seniors.

For more info visit: www.StarCastScouting.com

Friday May 21

Milton District Hospital holds a drop-in **breastfeeding group** with a certified lactation consultant from 10 to 11:30 a.m. at Our Lady of Victory School, 540 Commercial St., with information shared and babies weighed. Pregnant women are welcome. Call Jill Hicks at (905) 878-2383, ext. 7610.

The Deck youth drop-in centre, 200 Main St. E. (rear entrance), is open from 3 to 6 p.m. for students in Grades 6 to 9 and from 7 to 10:45 p.m. for those in Grade 9 up to age 18. Visit www.thedeckmilton.com.

The Milton Seniors' Activity Centre, 500 Childs Dr., holds **billiards** from 9 a.m. to 4 p.m., **tai chi** from 9 to 10:30 a.m., **bingo** from 9:30 a.m. to noon, **contract bridge** from 9:30 a.m. to noon, **Cyber Café** from 1 to 3 p.m. and **euchre** from 1:30 to 4 p.m. Each activity costs \$2 for members and \$4 for non-members. **Friday Evening Movie** runs from 7 to 10 p.m. featuring *The Young Victoria*. The cost is \$2. And bid euchre is held at the Campbellville Lions Hall from 7:30 to 10 p.m. The cost is \$3. For more information, call (905) 875-1681.

Saturday May 22

Milton Concert Presentations presents classical guitarist **Liona Boyd** accompanied by Srdjan Givoje at 8 p.m. at St. Paul's United Church, 123 Main St. E. Tickets cost \$25. Call Joyce at (905) 878-1526 or email mil-

tonconcerts@aol.com.

Milton District Hospital holds a **prenatal breastfeeding class** from 9:30 to 11:30 a.m. for expectant mothers and their partners. The cost is \$45. To register, call Jill Hicks at (905) 878-2383, ext. 7610.

Tuesday May 25

The Milton Community Policing Committee — which acts as a liaison between police, residents and the Town to inform and help reduce crime — meets at 6:30 p.m. at the Milton police station, 490 Childs Dr. Everyone's welcome.

Milton District Hospital holds a one-on-one **breastfeeding clinic** with a certified lactation consultant from 9:30 a.m. to 2 p.m. To make an appointment, call Jill Hicks at (905) 878-2383, ext. 7610.

Calling New Parents, a free drop-in program for parents and babies aged six months and younger, meets at the Ontario Early Years Centre, 410 Bronte St., from 1:30 to 3:30 p.m. Call (905) 825-6000, ext. 7299.

The Milton Seniors' Activity Centre, 500 Childs Dr., holds **billiards** from 9 a.m. to 9 p.m., **Downsizers Weight Loss Club** from 10 to 11 a.m., **Scrabble** from 1 to 3 p.m., **cribbage** from 1 to 3 p.m., **Nintendo Wii** from 1:30 to 3:30 p.m., **bingo** from 1:30 to 4 p.m. and **table tennis** from 2:30 to 4 p.m. Each activity costs \$2 for members and \$4 for non-

• see more DATELINE on page B22



BOXING DAY IN MAY!

Saturday May 22nd

**1 DAY
ONLY**

Doors
open at **6am**

gifts for the 1st 50 families • door crashers • live auctions • great deals

Bring your friends & ARRIVE EARLY at your favourite TERRA location & get ready for shop till you drop excitement!

www.terragreenhouses.com

TERRA

Where colour lives!