

-The Canadian Champion-

BEST HOMES

MILTON/CAMPBELLVILLE

905-878-2341

MAY 18, 2010

FURLONG COLLINS

Innovative Solutions
from
Innovative Lawyers
www.furlongcollins.ca
905-878-8123



Joseph Brazeau

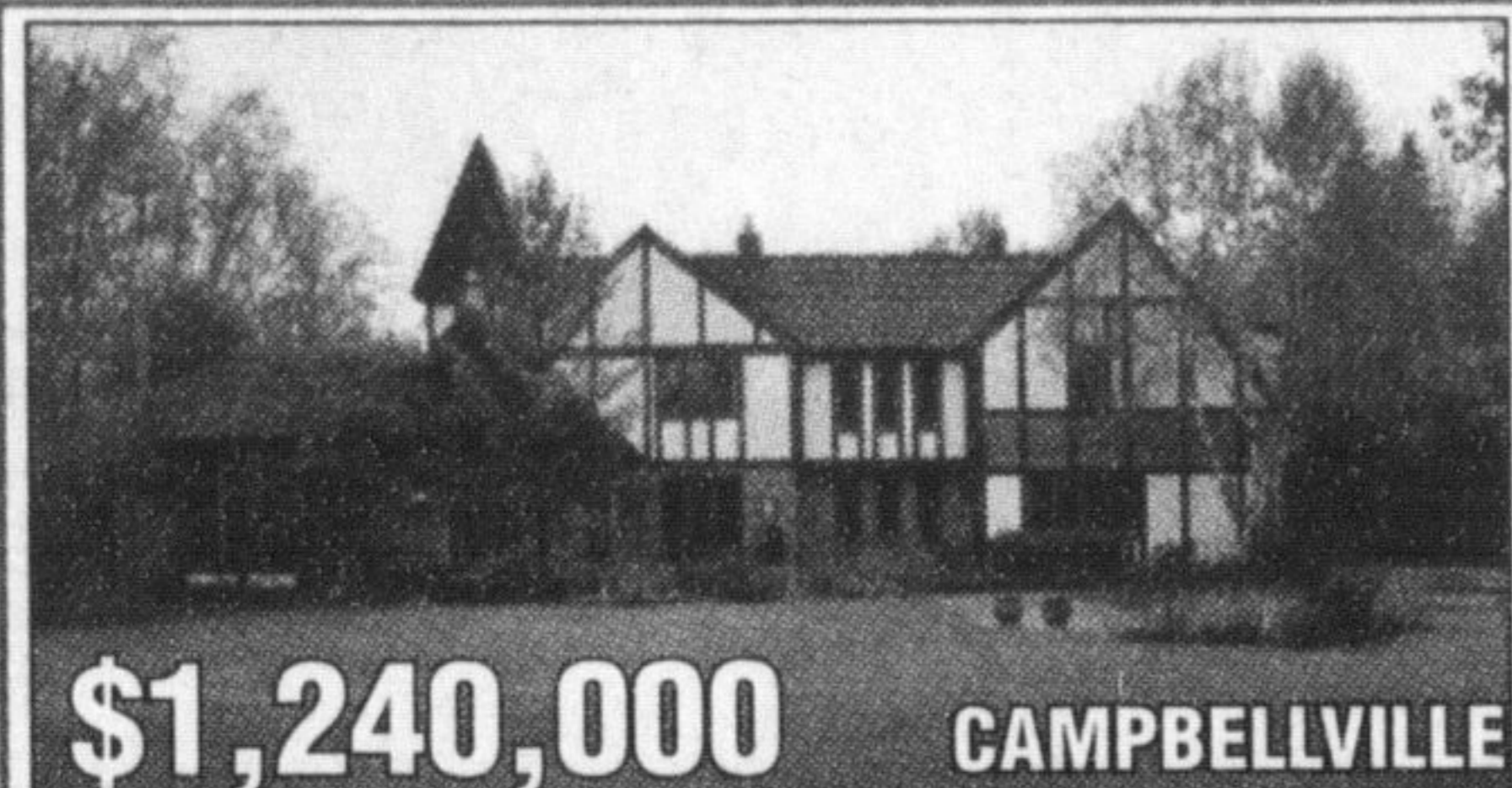


Virginia Brazeau
Sales Reps.

905-878-8101

ROYAL LEPAGE

Meadowtown Realty



\$1,240,000 CAMPBELLVILLE

EXCLUSIVE MCLAREN ESTATES

Executive living on 2 beautiful acres. Approximately 6,000 sq ft of finished space. Family sized kitchen with granite counters, Bosch appliance and brick fireplace. Great room with vaulted ceilings. 4 bedrooms, 5 baths, bedroom level laundry. Finished lower level recreation room with custom wet bar, built in entertainment unit and walk out to Lazy L swimming pool & hot tub. Oversized 3 car garage.

For further information and photos please visit.
BrazeauTeam.com



Joseph Brazeau

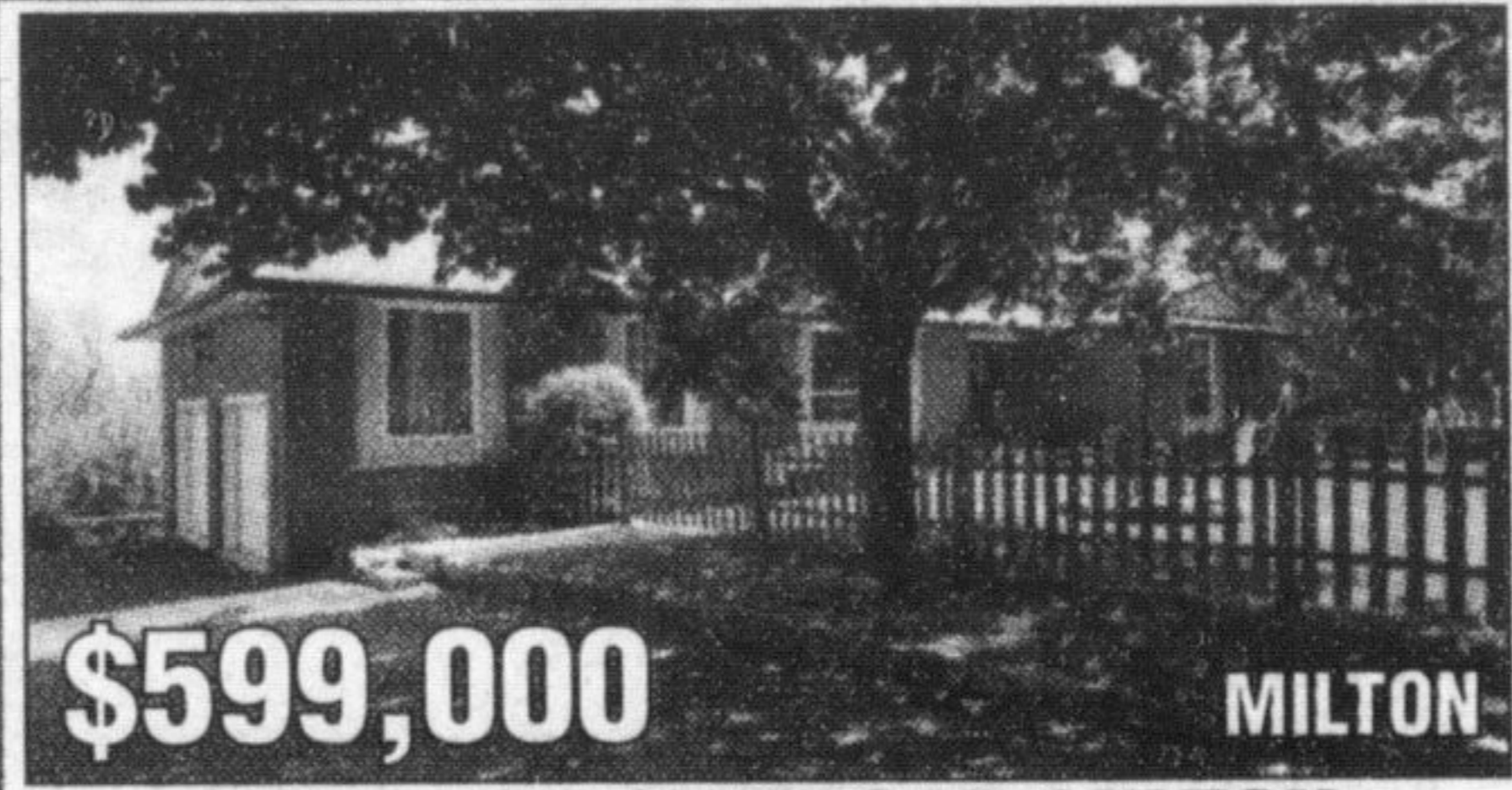


Virginia Brazeau
Sales Reps.

905-878-8101

ROYAL LEPAGE

Meadowtown Realty



\$599,000 MILTON

5470 14TH SIDEROAD MILTON

Stunning views of The Escarpment from this updated bungalow situated on 1/2 acre lot. Updated eat in kitchen with bay window. Formal LR/DR with walk out to large deck. Updated bath. Finished lower level recreation room with stone, wood burning fireplace and walk out to patio and hot tub. Minutes from downtown Milton, "Go" and Highway 401.

For further information and photos please visit.
BrazeauTeam.com



Joseph Brazeau



Virginia Brazeau
Sales Reps.

905-878-8101

ROYAL LEPAGE

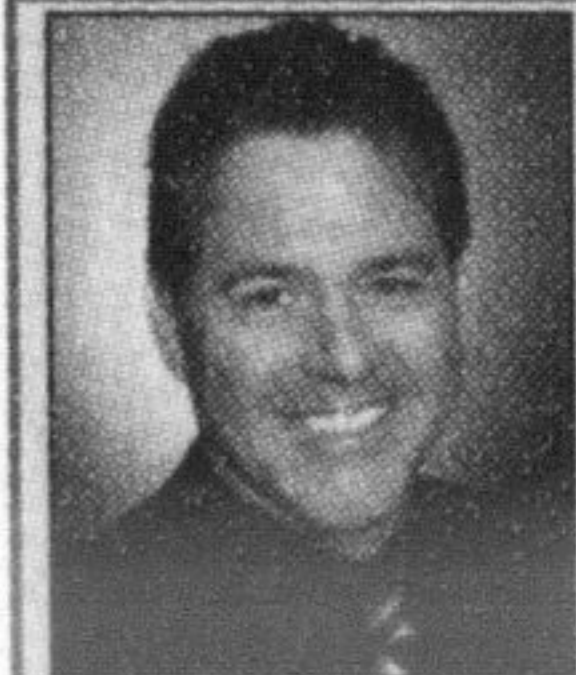
Meadowtown Realty



\$409,000 OLD MILTON

Beautifully updated 3 bedroom backsplitted in Old Milton. Open concept main floor. Updated kitchen with skylight. Hrdwd floors. Fin L/L recreation room with wet bar. Separated double garage with gas radiant heat. Located minutes from parks, schools and downtown Milton. Shows 10+++

For further information and photos please visit.
BrazeauTeam.com



Scott B. Prior
Broker

905-878-7777

PRIOR

REAL ESTATE CENTRE



MUST SEE

Rare 4 Bedroom, 2+1 Bathroom, "Mason" model on oversized pie lot fronting onto a park. Parking for 3 cars, enclosed front porch, Oak Staircase, 200amp service and gas line to the kitchen and backyard. \$409,900.

Please call Scott for more details or to book your personal tour.



GLEN THOMAS
Broker



GARY THOMAS
Broker

905-878-7777

www.intomilton.com

RE/MAX

Real Estate Centre Inc.



MILTON OFFICE/RETAIL SPACE

Plenty of options available around Milton. We have numerous listings for retail / commercial / industrial. Various sizes and prices. Contact us with your requirements and timeframe.

www.miltonproperties.ca or www.intomilton.com



HEATHER MEEHAN*
RYAN HAYDAR*
CAMMY HAYDAR*
Sales Representatives

www.themeehanteam.com

905-878-7777

info@themeehanteam.com

RE/MAX

REAL ESTATE CENTRE



NEW LISTING!

NEW LISTING!

\$379,900. Spacious 3 bedroom home in Dorset Park on a huge lot (50X150). New flooring, windows, doors, soffit/facia & eaves. Garden shed w/electrical. Roof is approx 12 yrs. old. 2 gas BBQ outlets. Central vac. Basement partially finished. DON'T MISS OUT ON THIS FANTASTIC MILTON PROPERTY! MLS#2017018



Lindsay J. McLaren
Sales Rep.

905-878-7777

lmcclaren@remaxcentre.ca

RE/MAX

REAL ESTATE CENTRE



NEW PRICE

\$387,900

LOVELY BACKSPLIT IN TIMBERLEA!

This three plus one bedroom home sits on a nice sized lot and is ideally located close to all amenities. Main level Kitchen, Din Rm & Living Rm. Lower level Family Rm and basement with second kitchen, bath & bedroom, the ideal in-law or teenager suite. Please call Lindsay for further details. \$387,900.



ANDREA & CHRIS SEVENTIKIDIS
Sales Reps.

905-878-9100

Top 5% in sales for Prudential Canada in 2005, 2007 & 2008!

Prudential

TOWN CENTRE REALTY INC. BROKERAGE



\$319,900 www.miltonareahomes.com

Semi in main st village- 3 bedrooms, 2.5 bathrooms, a/c, c/vac, breakfast counter & backsplash in kitchen, master bedroom w/en suite & walk in closet, kitchen appliances incl. Extra deep garage w auto garage door opener and double wide driveway. Central location, walk to leisure centre/GO/Superstore plaza & more! Call Chris for more info, (416) 209-2586.



KATHERINE BARNETT
Broker

905-875-3343

office 905-270-2000

www.katherinebarnett.com

RE/MAX

PERFORMANCE REALTY INC. BROKERAGE



SOLD \$427,000

WYNDHAM CORNER

Mattamy built in prime Hawthorne Village, steps to new library, park and schools. 1850 sq ft plus finished basement. Main floor family room with gas fireplace, separate living room and dining room. Hardwood flooring and stairs. Open concept kitchen featuring granite counter tops and stainless steel appliances. upgrades include 50 oz carpet upstairs, casement windows throughout, jacuzzi tub in master ensuite, interlocking and more. 2 car parking in drive.



Deborah Tuff
Sales Representative

The Tuff "Chicks" Team

905-878-7777

debttuff@copeco.ca

RE/MAX

REAL ESTATE CENTRE



\$579,900

1/2 ACRE IN MISSISSAUGA

Do you have a family with Children who love being outside And playing in the woods and tobogganing? This awesome 4 BR Family home is near Mavis and Dundas and is nestled in a quiet Alcove community where few people ever move from! View the Tour www.TheTuffTeam.com or Call Deb for your personal tour! Deborah@thetuffteam.com



KATHERINE BARNETT
Broker

905-875-3343

office 905-270-2000

www.katherinebarnett.com

RE/MAX

PERFORMANCE REALTY INC. BROKERAGE



\$439,900

SUNDIAL LARKSPUR MODEL

Approx 1700 sq ft, detached with 2 car garage, beautifully finished basement, main floor family room and large eat-in kitchen with stainless steel appliances. Oak stairs, three good sized bedrooms, master with full ensuite and walk-in closet, second floor laundry room, 4 car parking on drive, walk to shops, park and schools. Private deep lot with deck. \$439,900.



Cliff Barron
Sales Rep.

905-286-5888

cbarron@sutton.com

www.callcliff.ca

Sutton

Sutton Group Signature Realty Inc. Brokerage



\$519,900

Mattamy Built with Escarpment Backdrop

Four large bedrooms, 9 ft. ceilings, hardwood stairs and positively stunning kitchen with dark maple cabinets and custom stone backsplash. Hi-end gas range, washer/dryer plus Stainless fridge & hood fan. No exclusions. Log onto my website www.callcliff.ca for pictures and virtual tour. To view, just give me a call!

Top producing agent company wide, 2007, 2008, 2009

MINMAXX
REALTY INC. BROKERAGE

WIN FREE LISTING
JOIN IN CELEBRATING OUR SUCCESS

Call or Visit www.MinMaxx.com Today For Full Details!

264-1111
minmaxx.com

\$599,900

ABSOLUTELY GORGEOUS!

"Westmoreland", model, spacious & stunning floor plan, approx 3420 square feet. Huge family-size kitchen with pantry, severy & walk out to yard, gleaming hardwood on main floor, main floor den, formal dining room with pillars & window seat, open concept family room with media niche, gas fireplace & vaulted ceiling. 5 bedrooms, master bedroom with 4 Piece ensuite & main floor access to garage

MINMAXX
REALTY INC. BROKERAGE

#1 BEST OF BOTH WORLDS

TEAM IN TOTAL

1% REAL FULL SERVICE

TOTAL COMMISSION

264-1111
minmaxx.com

\$599,800

AN ABSOLUTE SHOWSTOPPER!!!

Mattamy's award winning "Tothburg" model, 3331 sf on a rare 56' lot. Prem pie-shaped lot on a child-safe cresc w/all brick elev. In Hawthorne Vlg. Fully loaded w/tasteful upgrds, 9' ceiling on main flr, HW flrs in lr, dr, fr & upper hall.

Not intended to Solicit Buyers or Sellers currently under contract with another Brokerage. © 2010 All Rights Reserved MinMaxx Realty Inc. Brokerage. 1. Based on MinMaxx Team's highest number of listings sold Jan 2009 - Dec 2009. *1 listed and sold by listing sales representative except competition. The advertised Transactions/ Statistics/ Solds may include, partially or solely, the ones where MinMaxx Realty Inc. cooperated with other Brokerages during any time frame. *The team includes all the MinMaxx Realty Inc. Brokerage, Sales Representatives as well as the Broker of Record. All the Statistics and Rankings are based on TREB Data sourced from an independent auditor.

MINMAXX
REALTY INC. BROKERAGE

WIN FREE LISTING
JOIN IN CELEBRATING OUR SUCCESS

Call or Visit www.MinMaxx.com Today For Full Details!

264-1111
minmaxx.com

\$414,900

A DEFINITE MUST SEE!

2172 sf 'Limestone 2' model by Green Park, lots of upgrds & extras, gas fireplace in family rm. upgrd ktn w/breakfast bar, upgrd cabinets incl. corner cabinet glass dr & over the fridge cabinet, r/i d/w. Laundry rm on 2nd flr w/storage closets. Separate shower in upgrd master ensuite.