



NOTICE OF STUDY COMMENCEMENT

Class Environmental Assessment Study

Tremaine Road (Regional Road 22) Transportation Corridor Improvements Derry Road (Regional Road 7) to Britannia Road (Regional Road 6), Town of Milton PR-2675

Study

Halton Region is initiating a Class Environmental Assessment (Class EA) study to consider a wide range of options for transportation corridor improvements to satisfy future travel demands on Tremaine Road from Derry Road to Britannia Road in the Town of Milton. In order to best address capacity deficiencies along Tremaine Road a number of road improvement alternatives will be examined as part of the study including widening of the roadway, cross-sectional requirements, intersection improvements, over-all traffic operations, as well as the impact of such improvements on the social and natural environments.

Process

This notice signals the commencement of the Class EA, a study which will define the problem, identify and evaluate alternative solutions, and determine a preferred solution in consultation with the Town of Milton, regulatory agencies, and the public. The study is being conducted in compliance with Schedule C of the Municipal Class Environmental Assessment (October 2000, amended 2007), which is approved under the Ontario Environmental Assessment Act.

Public and review agency consultation is a key element of the Class EA process and input will be sought from parties throughout this study. At this time, it is anticipated that two (2) Public Information Centres (PICs) will be conducted. It is anticipated that the first public meeting will be held in late Spring 2010. Details regarding the forthcoming PICs will be advertised as the study progresses. Upon completion of the study, a comprehensive Environmental Study Report will be prepared and placed on the public record for a 30-day review period. The document will detail the planning process and the preferred alternative including how the public and agency input was received. A notice of completion will be issued at that stage.

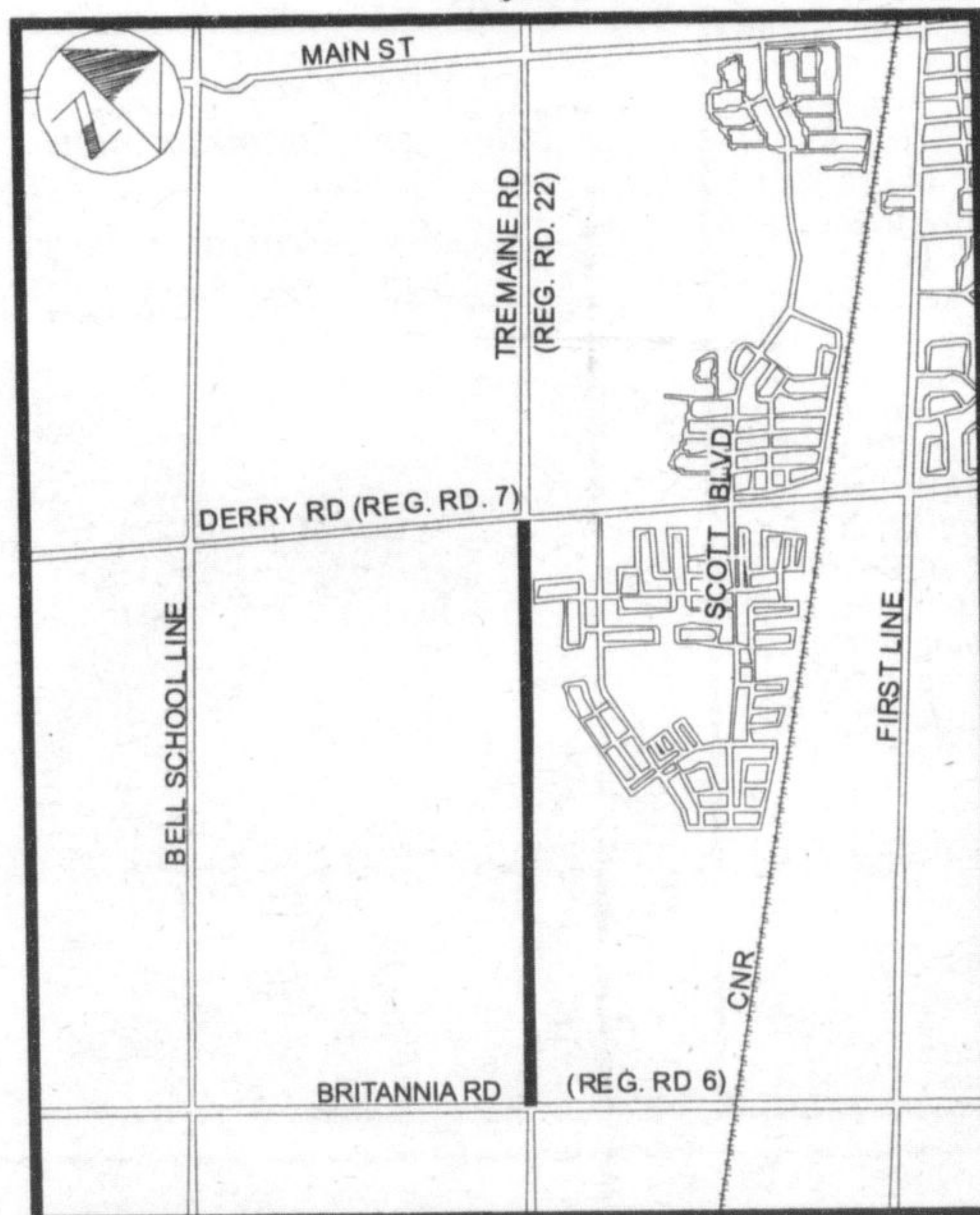
Comments

Please contact either of the following project team members if you wish to be added to the project mailing list, if you have any questions or comments, or wish to obtain more information about the project. Information requests or questions may be directed to:

Mr. Andrew Head, C.E.T.
Project Manager
Halton Region
Phone: 905-825-6000 Ext. 7475
Fax: 905-847-2192
Email: andrew.head@halton.ca

Mr. Marek Trzaski, P.Eng.
Project Manager
McCormick Rankin Corporation
2655 North Sheridan Way
Mississauga, Ontario L5K 2P8
Phone: 905-823-8500
Fax: 905-823-8503
Email: mtrzaski@mrc.ca

The map below shows the approximate limits of the study area.



This notice first issued April 22, 2010.

PUBLIC INFORMATION CENTRE #2

Class Environmental Assessment Study

Derry Road (Regional Road 7) Transportation Corridor Improvements Milborough Line (Regional Road 24) to McNiven Road, City of Burlington/Town of Milton PR-2598A

Study

Halton Region has initiated a Class Environmental Assessment (Class EA) study to consider a wide range of options for road improvements along the Derry Road corridor from Milborough Line (Regional Road 24) to McNiven Road. In order to best address operational deficiencies along Derry Road, a number of road improvement alternatives have been examined as part of the study; including structural and drainage deficiencies, cross-sectional requirements, intersection improvements and over-all traffic operations, as well as the impact of such improvements on the social and natural environments.

Process

The first Public Information Centre (PIC) was held on November 11, 2009. Thereafter, the preferred alternative was determined taking into consideration the problem being addressed, alternate solutions, environmental effects and comments that were received from the Local municipalities, regulatory agencies and the public. The preferred alternative includes a number of structural, geometric and roadway cross-section improvements.

A second Public Information Centre has been arranged to review the preliminary preferred alternative and receive public comments. Following the PIC, the preliminary preferred alternative will be reviewed in consideration of comments received to determine whether the preferred alternative can be confirmed or should be modified.

This PIC will provide an opportunity for you to review the preliminary preferred alternative, provide comments and discuss concerns you may have with representatives from Halton Region and R and R Associates Ltd. The second PIC is scheduled for Tuesday, May 4, 2010.

Public Information Centre #2

Date: Tuesday, May 4, 2010
Time: 6:30 p.m. – Drop-in
7:00 p.m. – Formal Presentation
Place: Kilbride Public School
6611 Pantou Street
Burlington, Ontario

Comments

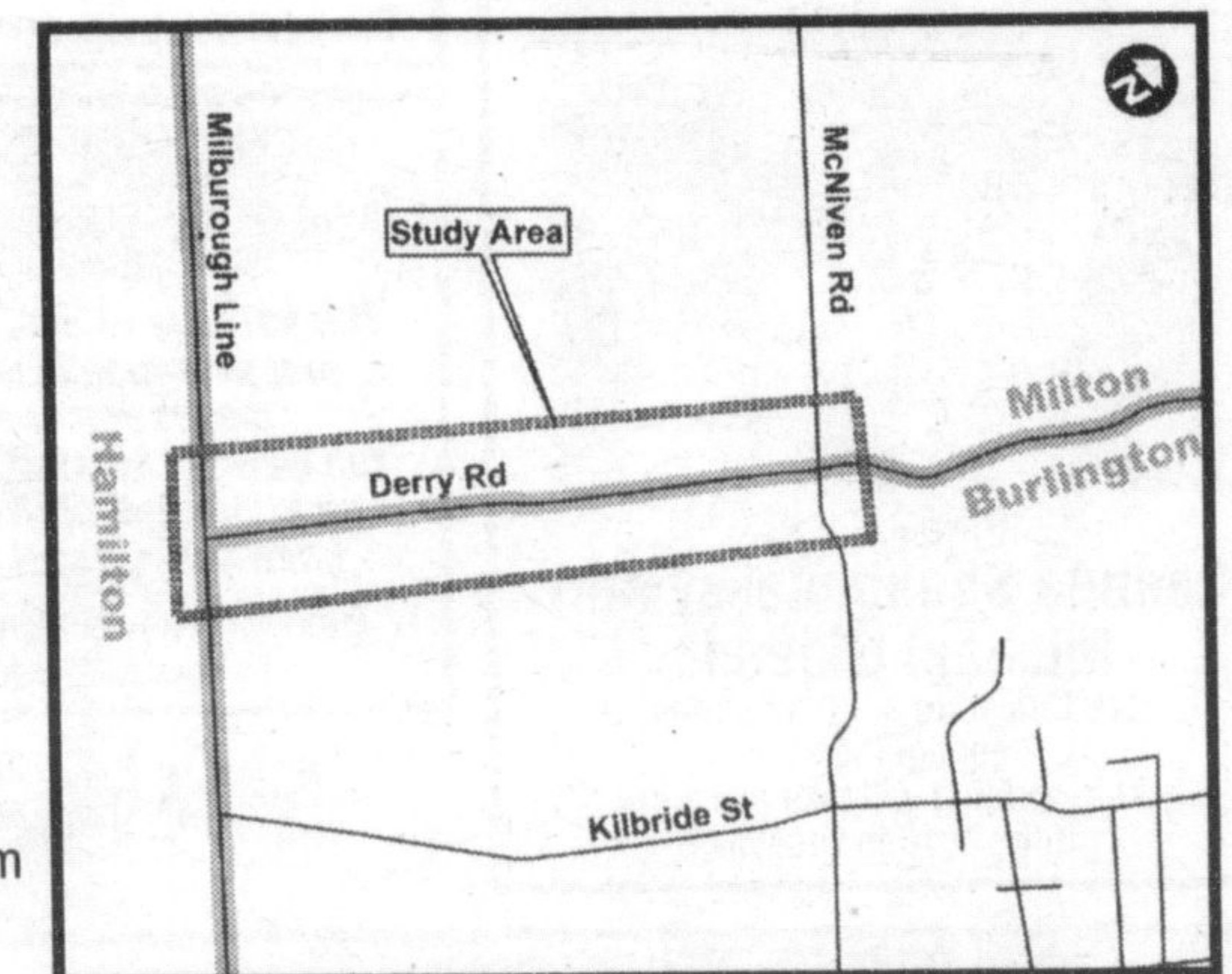
We are interested in hearing any questions or comments you may have concerning this project. You are encouraged to provide your comments so that they may be included in the study. Comments received through the course of the study will be considered prior to finalizing the preferred alternative. Please contact either of the following project team members if you wish to be added to the project mailing list, if you have any questions or comments, or wish to obtain more information about the project.

Information requests or questions may be directed to:

Mr. David Lukezic, MCIP, RPP
Project Manager
Halton Region
Phone: 905-825-6000 Ext. 7213
Fax: 905-825-8822
Email: david.lukezic@halton.ca

Mr. Rick Hein, P. Eng., PTOE, AVS
Project Manager
R and R Associates Ltd.
600 Ontario Street, P.O. Box 28058
St. Catharines, Ontario L2N 7P8
Phone: 905-937-1708
Fax: 905-937-4384
Email: RHein@RandR-Associates.com

The map below shows the approximate limits of the study area.



This notice first issued April 22, 2010.