

MEADOWTOWNE REALTY

E., MILTON

www.meadowtowne.com



9RE • CANADIAN CHAMPION Tuesday, February 23, 2010

AMY flowers TEAM



WATCH YOUR DREAMS GROW*

Direct Line Broker

905-878-6232

www.AmyFlowers.ca

*Michelle Merritt Sales Rep

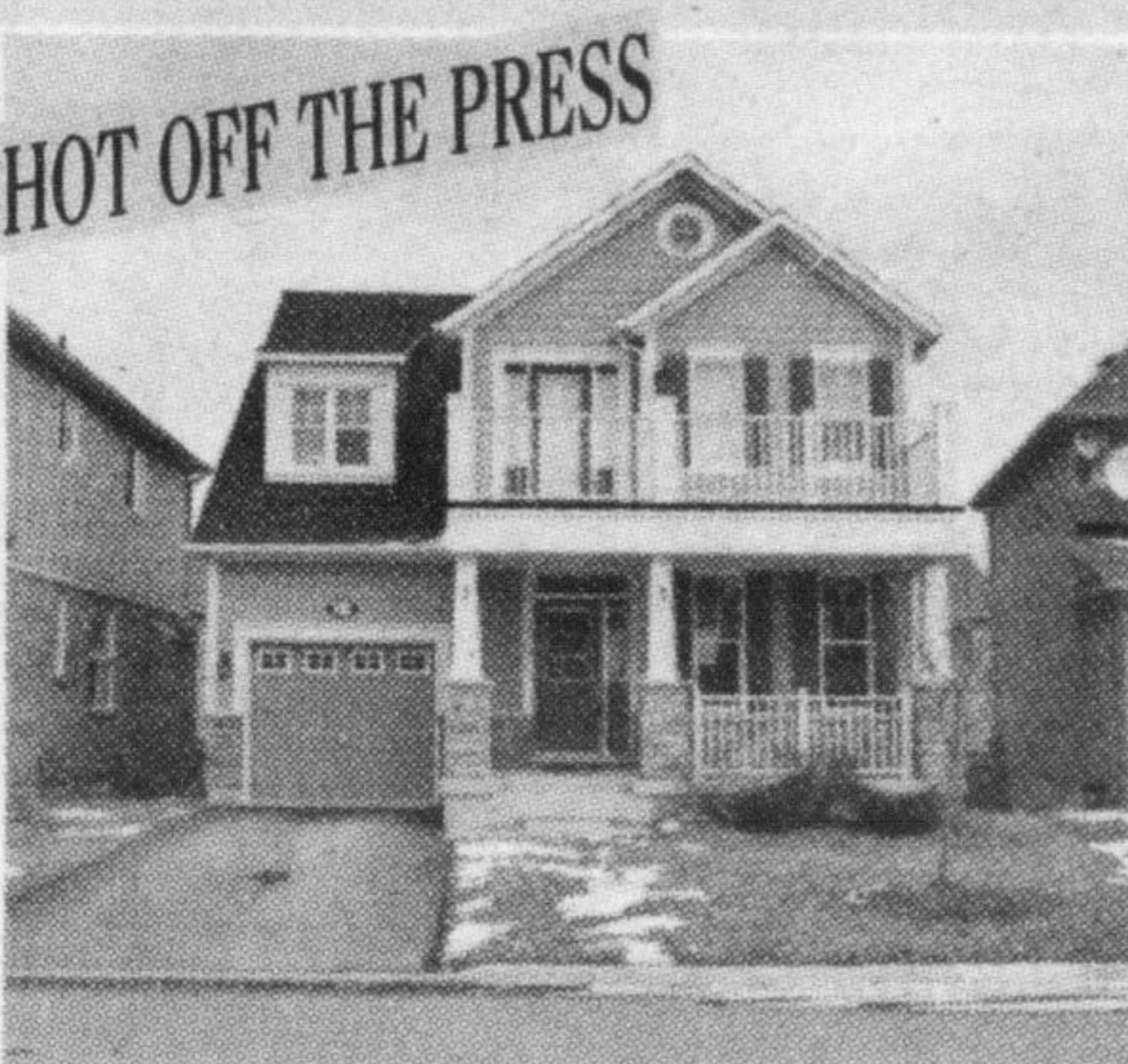
AGENT WANTED

No Cold-Calling, All Appointments & Leads Supplied, Make \$75,000+ in your First year. All expenses paid including cell phone! For more information, email your request to admin@amyflowers.ca



Mattamy's Coleman model (1385 sqft.) Parking for 2 cars in the driveway. Finished rec room offers more living space. Fully fenced yard has large 2 tiered deck with gorgeous gardens.

\$339,900



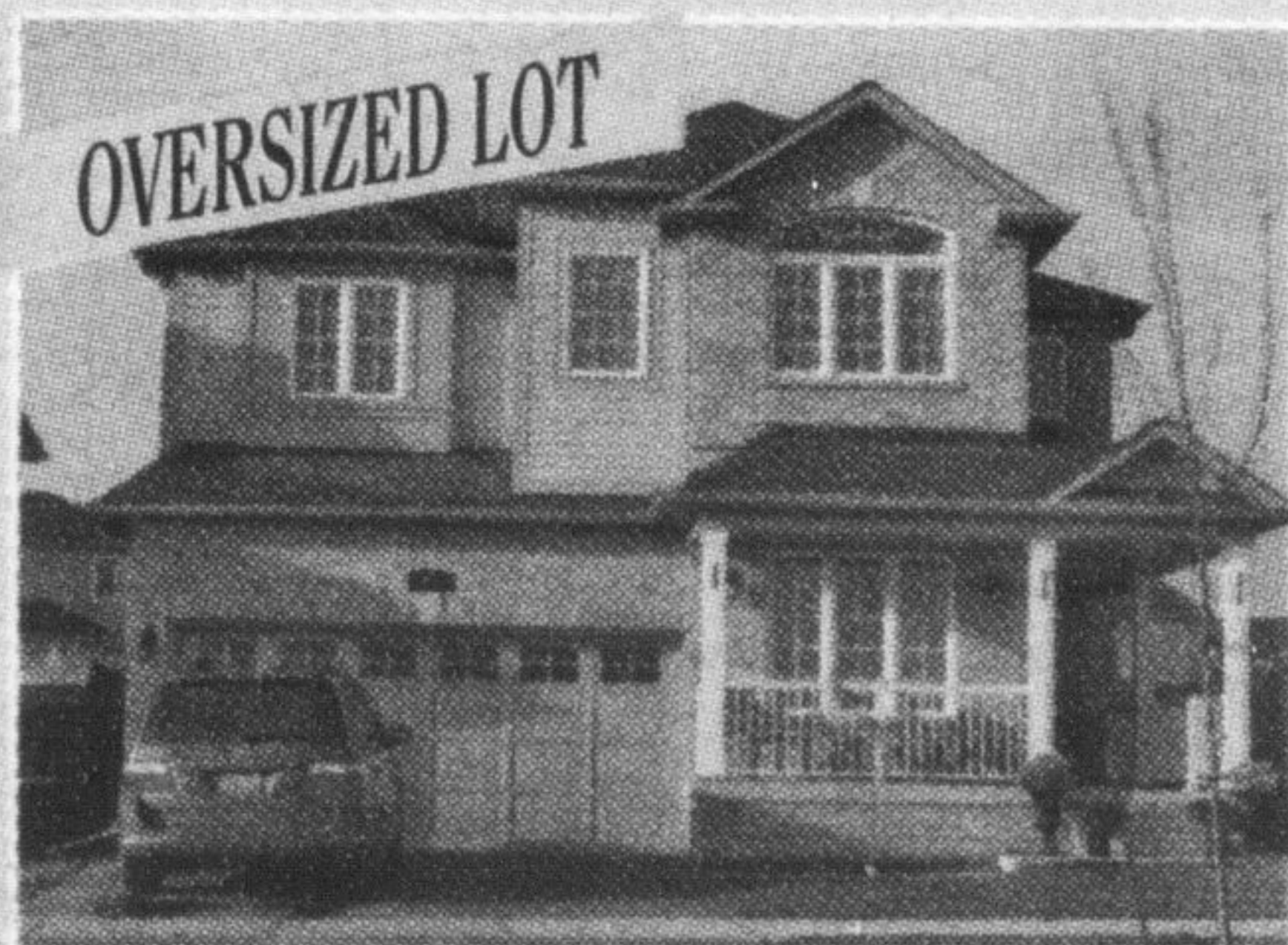
Mattamy's Norriston model (1858 sqft) situated on an oversized pie shaped lot with huge 2 tiered deck. Open concept layout with eat-in kitchen includes chef's desk & pantry. Convenient 2nd floor laundry. Sparkling master ensuite features soaker tub & separate shower.

\$414,900



Mattamy's Amesbury model (1130 sqft.) is Energy Star certified. Interlock walkway, and enclosed porch perfect for relaxing. Open concept layout includes fireplace in the living room. Master bedroom complete with walk-in closet & semi-ensuite bath.

\$299,900



Gorgeous 5 bedroom (3024 sqft.) home located across from the park. One of the largest backyard in New Milton - perfect for a pool. Stunning custom kitchen is a chef's dream with granite counters, centre island & double glazed chocolate stained cabinets. Beautiful Brazilian hardwood on the main floor, sparkling 5 piece ensuite and so much more.

\$629,900

Pat Rideout
SALES REPRESENTATIVE 905-878-8101
email: PatR@RoyalLePage.ca
www.patrideout.ca
Member of the Oakville-Milton, Toronto and Hamilton-Burlington Real Estate Boards



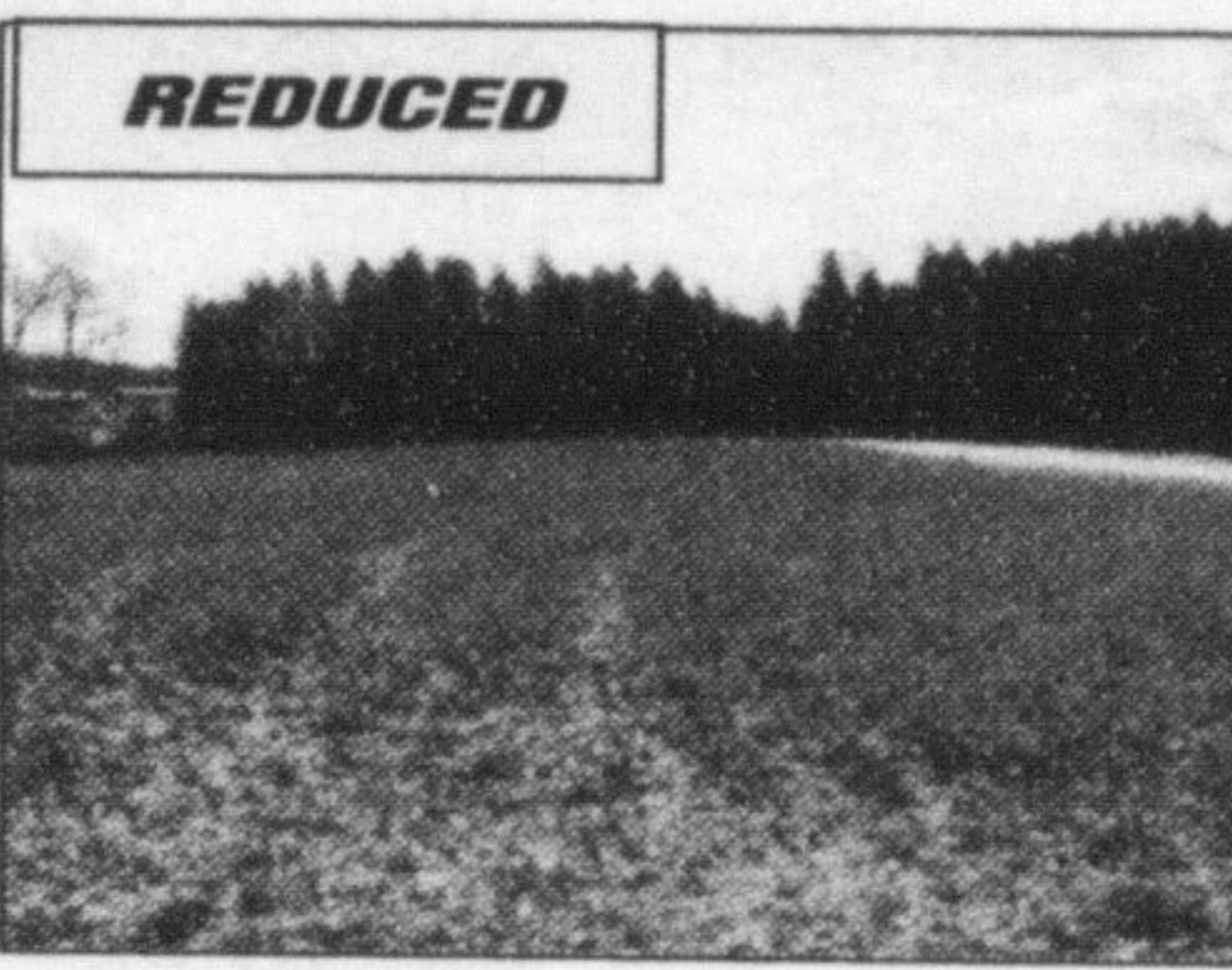
LOOK NO FURTHER

Loads of upgrades in this lovely 4 bedroom home. Separate main floor family room with gas fireplace is adjacent to the eat-in kitchen with upgraded cabinets and the optional full pantry bank of cupboards providing all the storage you would need. Nine foot ceilings on the main floor and a double garage with interior entrance. Master bdrm has an upgraded ensuite with corner tub, dbl sinks, and a sep. shower. Close to schools and shopping - call Pat to see for yourself before its gone. **\$434,900.00**



FOR LEASE

Huge 3 bedroom end-unit townhouse for lease. Many upgrades including hardwood floors, gas fireplace, and upgraded kitchen with granite counters, Master bedroom has 2 walk-in closets plus an ensuite with sep tub and shower. Single garage with parking for 2 cars in the driveway. Don't hesitate. Call Pat for an appointment to view. **\$1550.00 per month.**



REDUCED

BUILD YOUR DREAM HOME!

Great size and location to build your dream country home. Just west of Guelph Line in the hamlet of Moffat, this almost 4 acre building lot has a new drilled well in place. Located across from Tuscan Ridge estate subdivision. This property is a newly created building lot - a rare find, so don't miss out on this opportunity. Call Pat for further details. **\$319,900.**



BUSINESS IS RELOCATING COMMERCIAL/RETAIL SPACE

Rare opportunity to purchase commercial/retail space in the downtown core. Great location with high visibility and traffic. Building is 2400 square feet on the main level. Zoning lends itself to a wide variety of uses. Call Pat for further details and to schedule an appointment to view. **Listed at \$699,900**

EXPECT THE *Royal Treatment*

Sandy Del Papa
AN ACCREDITED "HOME STAGING" PROFESSIONAL
THE AWARD OF EXCELLENCE LIFETIME MEMBER
Broker's PLATINUM Award
President's GOLD Award



93 ACRES + 2 HOUSES ON 2 ROAD FRONTAGES

Make arrangements to view this 93 acre parcel. Large principle residence (approx. 3,000 sq. ft.) plus second home suitable for farm hands. Barn & drive-shed on property (need repair), huge detached workshop - great for home hobby/business. Location provides great access to Mohawk.

See photo gallery at www.sandydelpapa.ca

Top 1% Nationally again in 2009

THE BRAZEAU TEAM

WWW.BRAZEAUTeam.COM

905-878-8101



Joseph Brazeau, B.A.*



Virginia Brazeau R.N.*



Jodie Near B.A.*



Kim Coulter Sales Rep

STUNNING 4 BDRM HOME

On large mature lot across from Brian Best Park. Updated kit w/centre island & appliances. Main flr family room with gas fp & w/o to patio. Inground pool and garden. Formal LR & DR. Updated baths. Finished lower level with rec room,

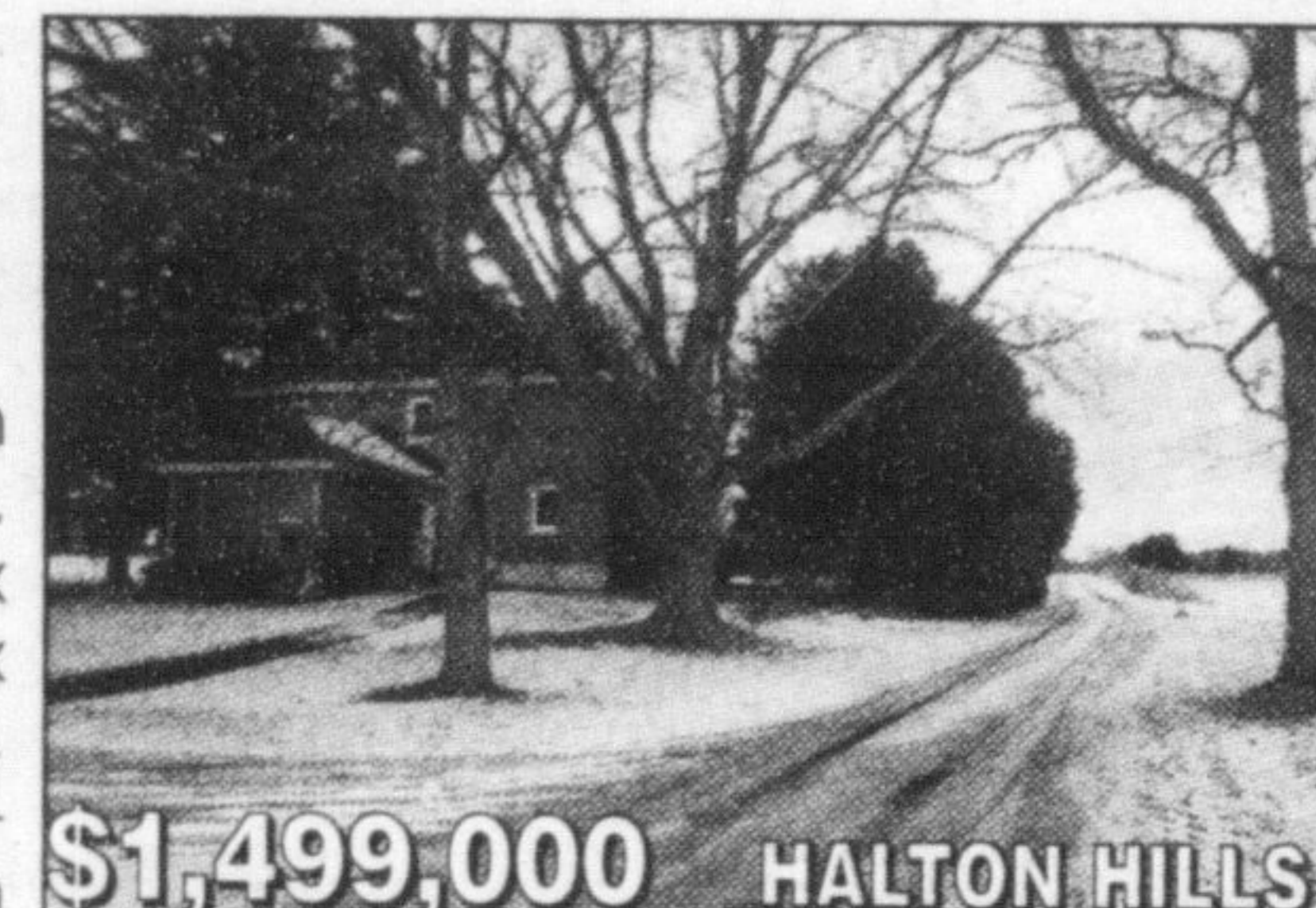


\$528,000

MILTON

APPROX. 58 ACRE HOBBY FARM

Nestled between Georgetown and Milton. Stately 2 storey, brick farmhouse set back from road with 4 bdrms., eat in kit., separate living/diningroom. Main floor familyroom and sunroom. A large barn and oversized driveway are a few of the outbuildings. Rolling lands with spring fed creek. Quick access to 401. Rare Opportunity at this price.



\$1,499,000

HALTON HILLS

RARE SOUTHCOTT ESTATES OFFERING

Gated entrance to stately 5+2 bdrm Manor situated on 2.5 acres. Formal principal rooms, 6 baths. Gourmet kit with b/l appliances & walk out to Florida Room. Lrg Master w/fp & updated 6 pc bath. Nanny/inlaw suite with 4 pce ensuite. 2nd floor laundry. 3rd flr loft with gas fp.

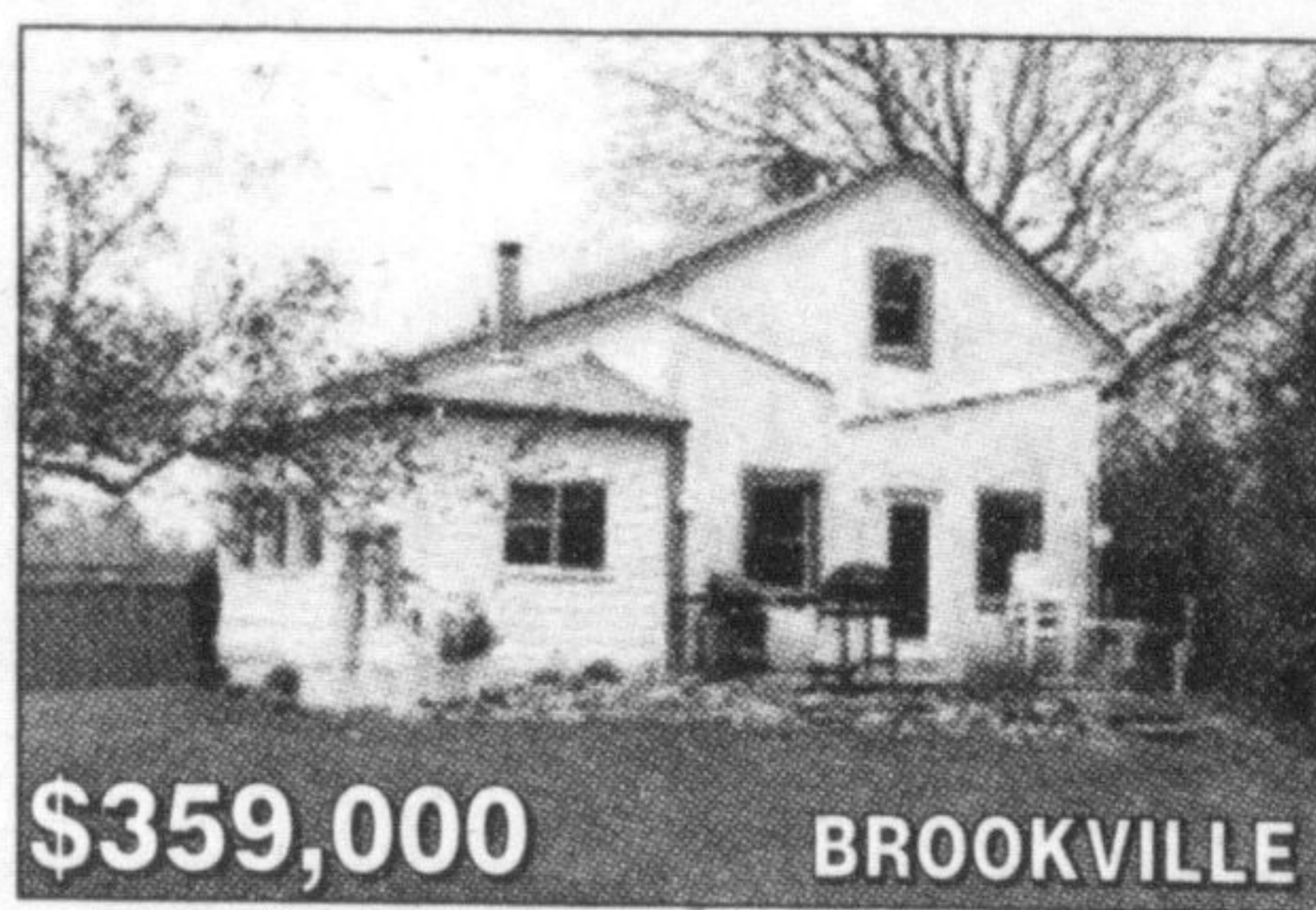


\$1,399,000

MILTON

CHARMING 1 1/2 STOREY

3 bedroom updated home on 1/2 acre lot. Modern Galley kitchen. Separate living/diningroom. Main floor sunroom and laundry. Walkout to deck and mature lot. Separate 2 car garage with studio loft. Amazing Brookville location. Minutes to 401.



\$359,000

BROOKVILLE

3 EXECUTIVE BUILDING LOTS FOR SALE IN FREELTON

Build your Dream Home. Please call for more information!

For further information and photos on these properties please visit

BrazeauTeam.com

* SALES REPRESENTATIVE ** BROKER