



MILTON HYUNDAI
www.miltonhyundai.com
1235 STEELES AVENUE
905-875-1120

The Canadian Champion

Milton's Community Newspaper Since 1860

CNA Named Canada's Top Community Newspaper

www.miltoncanadianchampion.com



The King Team
905 320-BARB
Barb & Jim King
Broker Admin. Ass.
TOP 1%
MILTON 2009
www.BarbKing.com

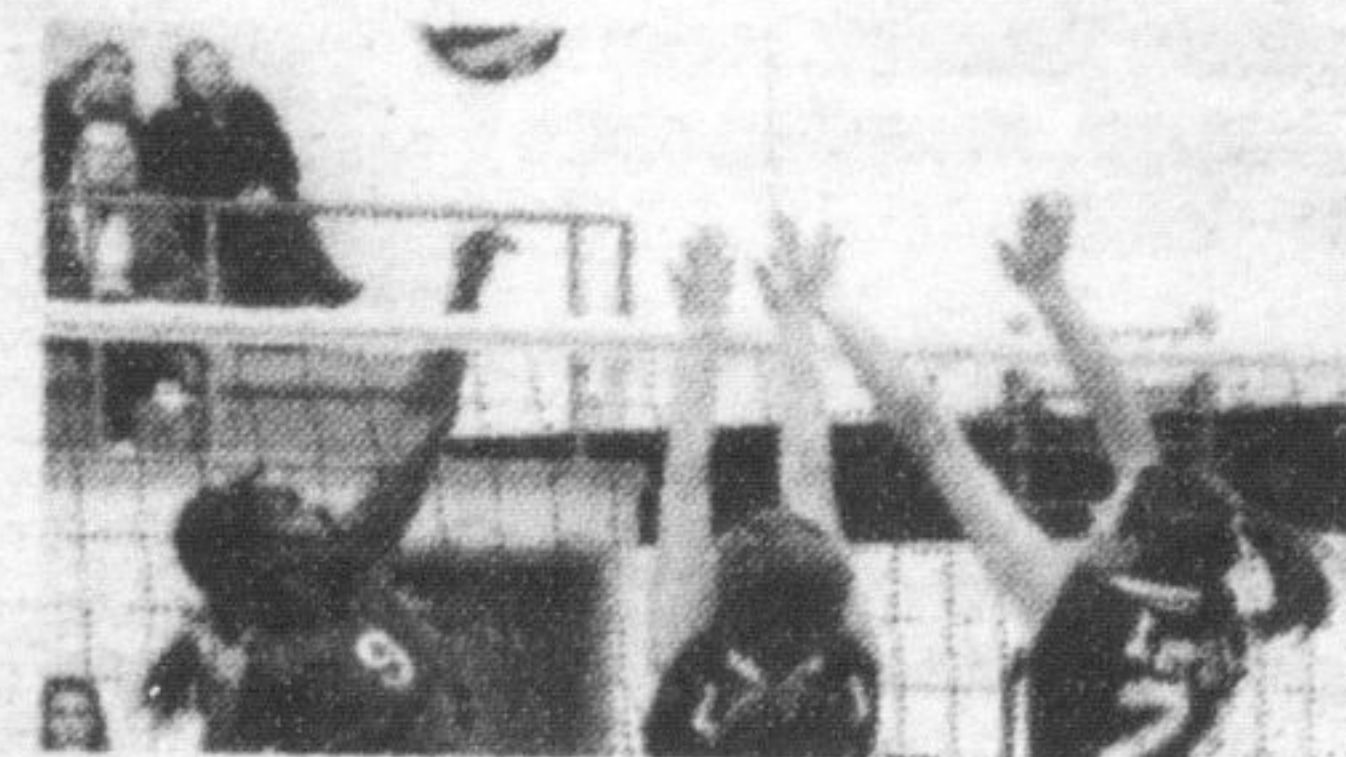
REAL ESTATE

See what's on the market inside



NEWS

Regional transit system considered



SPORTS

Mustang Jrs. going to finals

A Metroland Media Group publication • Vol. 150 No. 100

Tuesday, February 23, 2010

32 Pages • \$1.00 (incl. G.S.T.)

Attempted murder suspect to remain at psychiatric facility

A Milton man charged with attempted murder in connection with the stabbing of his wife has been released on his own recognizance but won't have any contact with the public.

Luis-Fernando Manrique, 40, has been ordered to remain at the medium-security psychiatric facility at St. Joseph's Healthcare Hamilton pending the outcome of his case.

Terming it a "release" is merely a formality so he isn't sent back to Maplehurst Correctional Complex following his recent 60-day assessment at St. Joseph's, Manrique's lawyer, Paul Stern, told the *Champion* after the brief appearance.

The hearing was held last Tuesday at Ontario Court of Justice in Milton.

Manrique, clean-shaven and wearing a brown jacket and collared shirt, was led handcuffed into the prisoner's box by escort officers.

He searched the courtroom, silently acknowledging a woman who appeared to be a family member.

Proceedings were translated to him by a Spanish interpreter.

Other terms of Manrique's so-called release include that he have no contact with either the victim or his two children and that he be of good behaviour and amenable to treatment at the hospital.

If he breaches any of the conditions he can be returned to custody.

As previously reported, the 35-year-old victim was stabbed repeatedly September 16 at a Huffman Crescent home in what police alleged was a domestic dispute.

Manrique's case will return to a Burlington court March 24 for a pre-trial.



GRAHAM PAINE / CANADIAN CHAMPION

WHICH WAY TO THE BEACH?: Milton Heights Racing Club coach Daniel Karlsson-Amador enjoys the bright sunshine and spring-like temperatures before heading back onto the slopes with a group of young skiers at Glen Eden Ski and Snowboard Centre over the weekend. It was one of the club's many themed ski days — this one dubbed 'Beach Club.'

United Way surpasses hefty goal

Whopping \$641,829 raised in 2009 campaign

You did it! The United Way of Milton has announced a record amount collected for its recently-concluded 2009 campaign.

The grand total is \$641,829, which surpasses its goal of \$630,000 — no small feat during these uncertain times, said United Way of Milton president Lesley Mansfield.

"Exceeding our 2009 target in this difficult economic time was a great accomplishment by all of our Milton residents, businesses and employees," she said.

It's a particularly noteworthy achievement given that the amount collected last year fell short of its goal — also \$630,000 — by three per cent, with a final tally of \$610,000.

The success of this year's campaign, launched last September, is a testament to residents who recognize the importance of continuing the work of the more than two dozen local agencies and organizations whose programs are funded by the United Way, Mansfield said.

She also praised United Way staff and volunteers, led for the second year by campaign chair Wendy Schau.

As is the case every year, a large portion of donations were from local businesses and employee groups. Payroll designations were also essential, coming in largely from people who work outside Milton but who designate their donations to the local United Way.

One-time and monthly pledges were also important to meeting the goal, as were fundraising events including the Mayor's Golf Tournament, the new curling bonspiel and the annual Christmas house tour.

MILTON DENTURE CLINIC

THE DENTURE SPECIALIST

GARRY T. TRENTON, DENTURIST

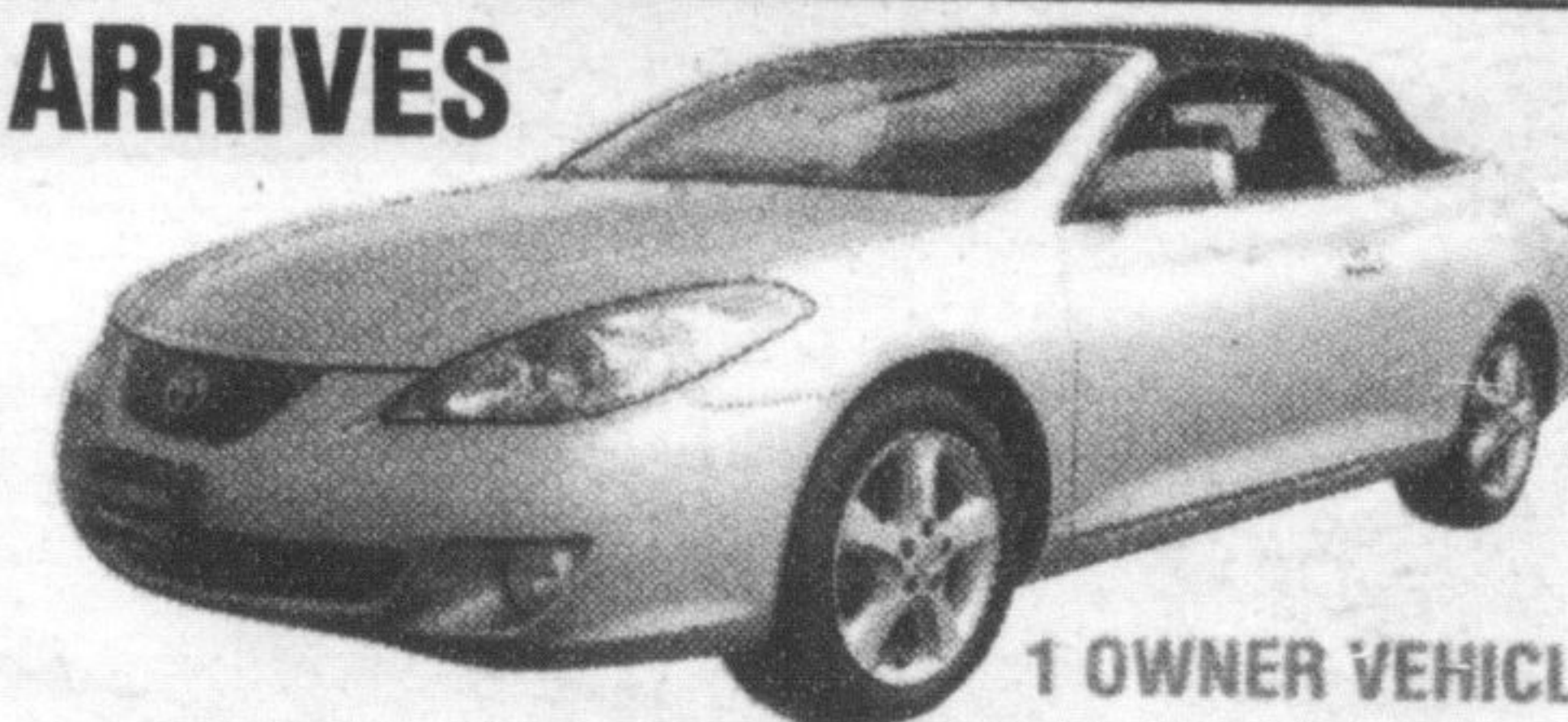
SAVE NOW BEFORE SPRING ARRIVES

Reduced! WAS \$21,995
2006 Toyota Solara SLE Convertible
\$19,988

PLUS PAY GST, PST AND LICENSE ONLY.

MILTON TOYOTA

1245 Steeles Avenue (Corner of James Snow Pkwy. & Steeles Ave.) (905) 875-1700



1 OWNER VEHICLE.

This is a Toyota Certified Used vehicle!!! 4 brand new tires just installed. Balance of Toyota 5 Yr./100,000km powertrain warranty & 30 day mechanical bumper to bumper with a 30 day/2,500km exchange policy.

mytoyotaplace.com

NEW LOCATION
160 MILL STREET, MILTON
905-876-2000